

Notes and Luminaire Schedule

DTWA332-TG120-1-3-EB Day -Brite Lights fixture. Qty - 90, Label - D 16144, Arrangement - single, LLF - 0.920, Calculated Footcandle points for booth #1, #2, #3 are at 5' off the floor - Average 90.10 Fc, Max 112 Fc, Min 54 Fc. Mounted at about 11' above the floor. Fixtures by overhead doors and water falls equipment mounted on the ceiling

DTWA332 -TG 120 -1-3 - EB - Night Lights fixture mounted on the ceiling and wired to PBL

WINNIPEG TRANSIT DEPARTMENT
 421 Osborne Street
 Winnipeg MB R3L 2A2
 Tel: 986-5812 / 479-5430
 avecherya@winnipeg.ca

PROJECT
SUPPLY AND INSTALLATION OF LIGHTING SYSTEM IN PAINT BOOTH AT 421 OSBORNE STREET

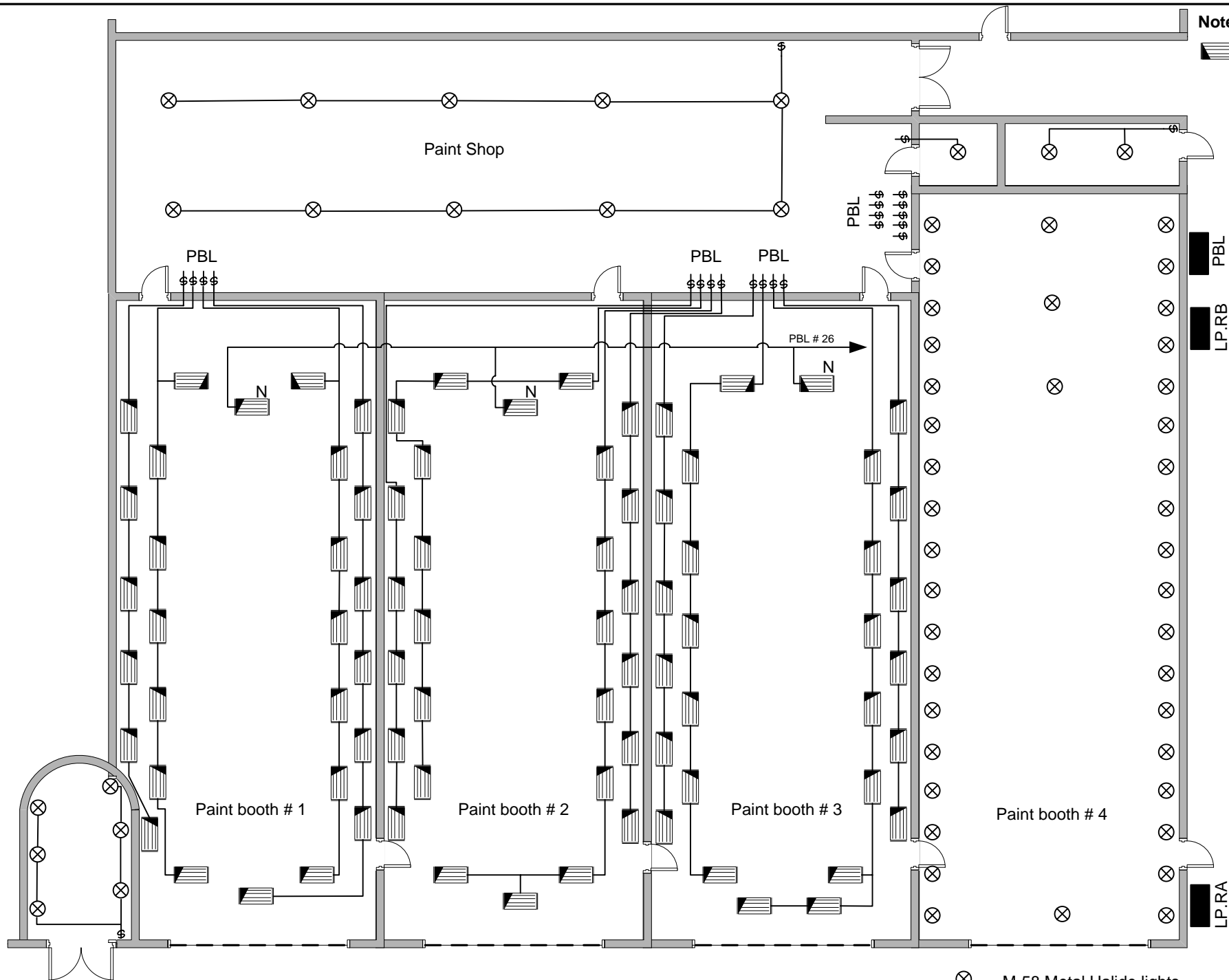
SHEET TITLE
UPGRADED LIGHTING SYSTEM IN PAINT BOOTH # 1

DRAWN BY CHECKED BY APPR. BY
AV

eFILE PROJECT No
665-2010
DRAWING A-1-RO

DATE SCALE
2010. 08.31 **NTS**

SHEET No
A-1



⊗ M-58 Metal Halide lights mounted in paint booth # 4 on the ceiling.