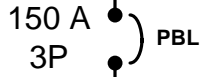
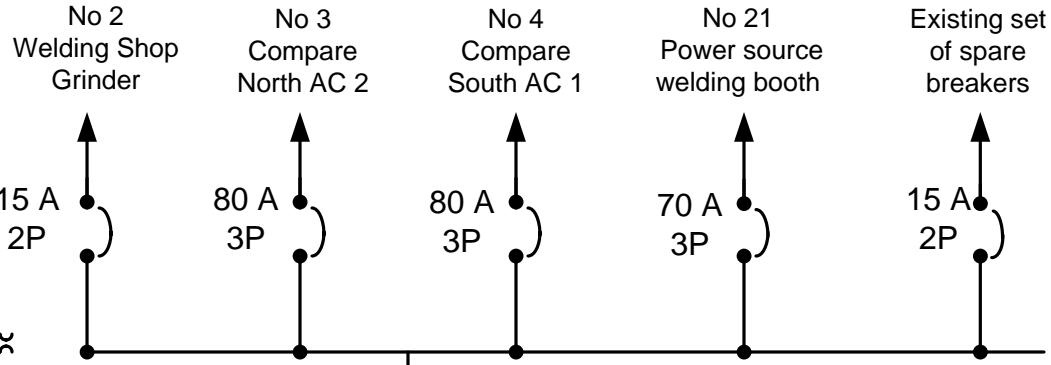


225A, PBL Sub Distribution Panel Board, Located on Paint Booth # 4 outside wall

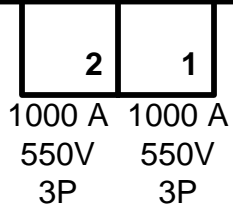
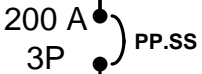


600A, 208V, 3P, PP.SS Sub Distribution Panel Board, Located on Stores outside wall



ANN Distribution Transformer, 600 HV, 150kVA, 208/120LV, 3P, Located in Stores area, N/W corner

100A, 600V, 3P, LP.RB Sub Distribution Panel Board, Located on Paint Booth # 4 outside wall



Normal Electrical Distribution Panels located in Electrical UPS Room, Section G. Maximum loading on Panel 1 is 391 kVA

WINNIPEG TRANSIT DEPARTMENT 421 Osborne Street Winnipeg MB R3L 2A2 Tel: 986-5812 / 479-5430 avecherya@winnipeg.ca		
PROJECT SUPPLY AND INSTALLATION OF LIGHTING SYSTEM IN PAINT BOOTH AT 421 OSBORNE STREET		
SHEET TITLE UPGRADED ELECTRICAL DISTRIBUTION FOR LIGHTING SYSTEM FOR PAINT BOOTHS #1,#2,#3,#4		
DRAWN BY AV	CHECKED BY	APPR. BY
eFILE 665-2010 DRAWING A-3-RO	PROJECT No 665-2010	
DATE 2010. 08.26	SCALE NTS	
SHEET No A-3		