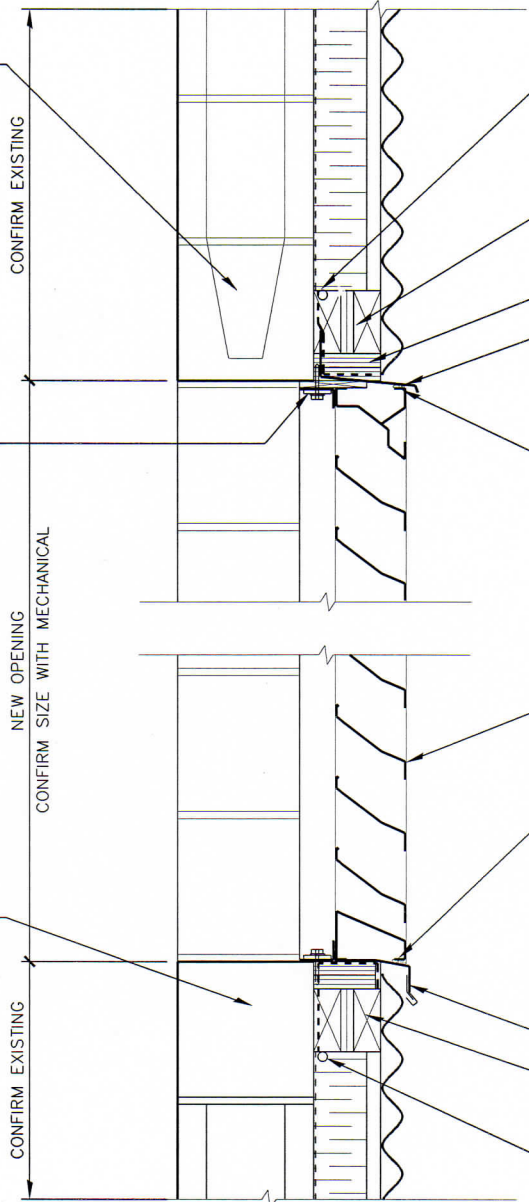


Wed, 08 Apr 2009 - 10:10am - R:\LM-DETAIL_Library\AP2\AP2_Crawlspace.dwg

MODIFY EXISTING BLOCK BACK-UP WALL TO SUIT OPENING. REFER TO STRUCTURAL.



PROVIDE SELF ADHESIVE MEMBRANE DETAIL STRIP. SEAL TO EXISTING WALL CONSTRUCTION WITH CONT. BEAD OF MASTIC AT LEADING EDGE.

CUT BACK EXISTING INSULATION. PROVIDE SOLID WOOD BLOCKING TO SUIT WALL WIDTH

2 LAYERS P.T. 19mm PLYWOOD

PREFINISHED STEEL DRIP FLASHING. COLOR TO MATCH LOUVRE

CAULKING AND BACKING ROD TYPICAL AROUND OPENING

PROVIDE PREFINISHED METAL TRIM PIECE AROUND LOUVERS TYPICAL MECHANICAL FASTENERS TOP AND BOTTOM

MECH. LOUVER SEE MECHANICAL

CAULKING AND BACKING ROD TYPICAL AROUND OPENING

MODIFY EXISTING BLOCK BACK-UP WALL TO SUIT OPENING. REFER TO STRUCTURAL.

PREFINISHED STEEL SILL FLASHING

CUT BACK EXISTING INSULATION. PROVIDE SOLID WOOD BLOCKING TO SUIT WALL WIDTH

PROVIDE SELF ADHESIVE MEMBRANE DETAIL STRIP. SEAL TO EXISTING WALL CONSTRUCTION WITH CONT. BEAD OF MASTIC AT LEADING EDGE.



TYP. SECTION AT MECH. LOUVER

SCALE

1 : 10



LM Architectural Group

500-136 Market Ave
Winnipeg Manitoba
Canada R3B 0P4
t: (204) 942.0681
f: (204) 943.8676
www.lm-architects.com

PROJECT:
CITY OF WINNIPE
BID OPPORTUNITY 679-2010
909 CONCORDIA AVENUE
Refer to drawing:
DRAWN BY: DATE: JULY 2010

AP5.0
COMM. NO.: