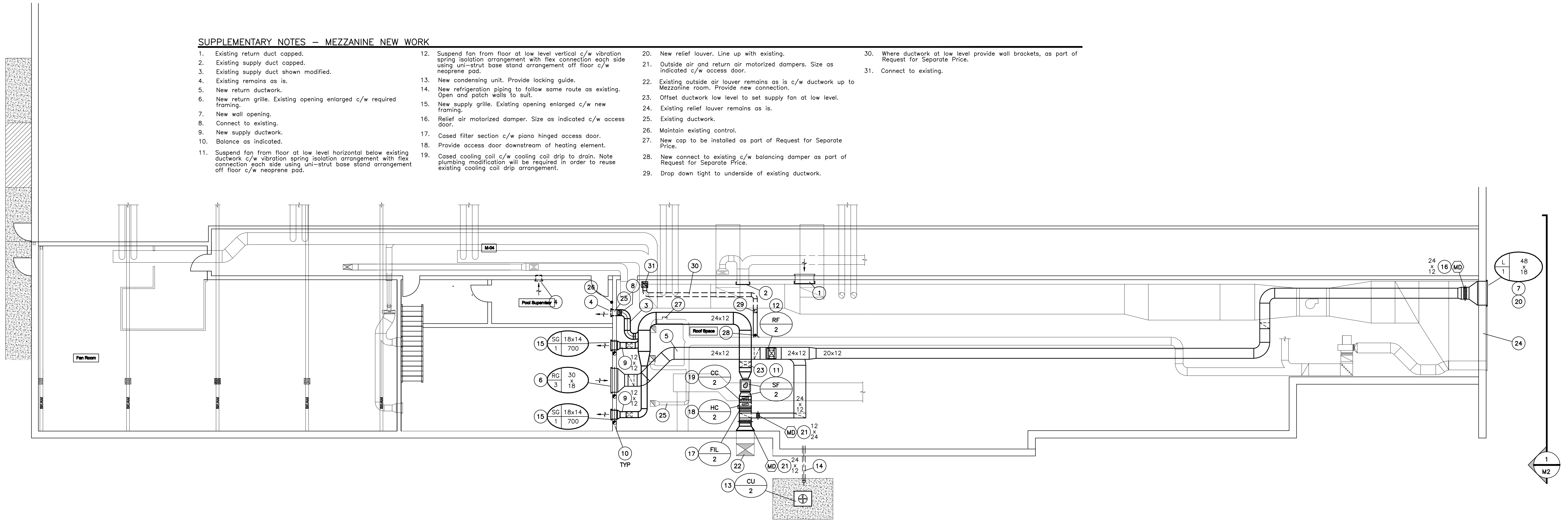


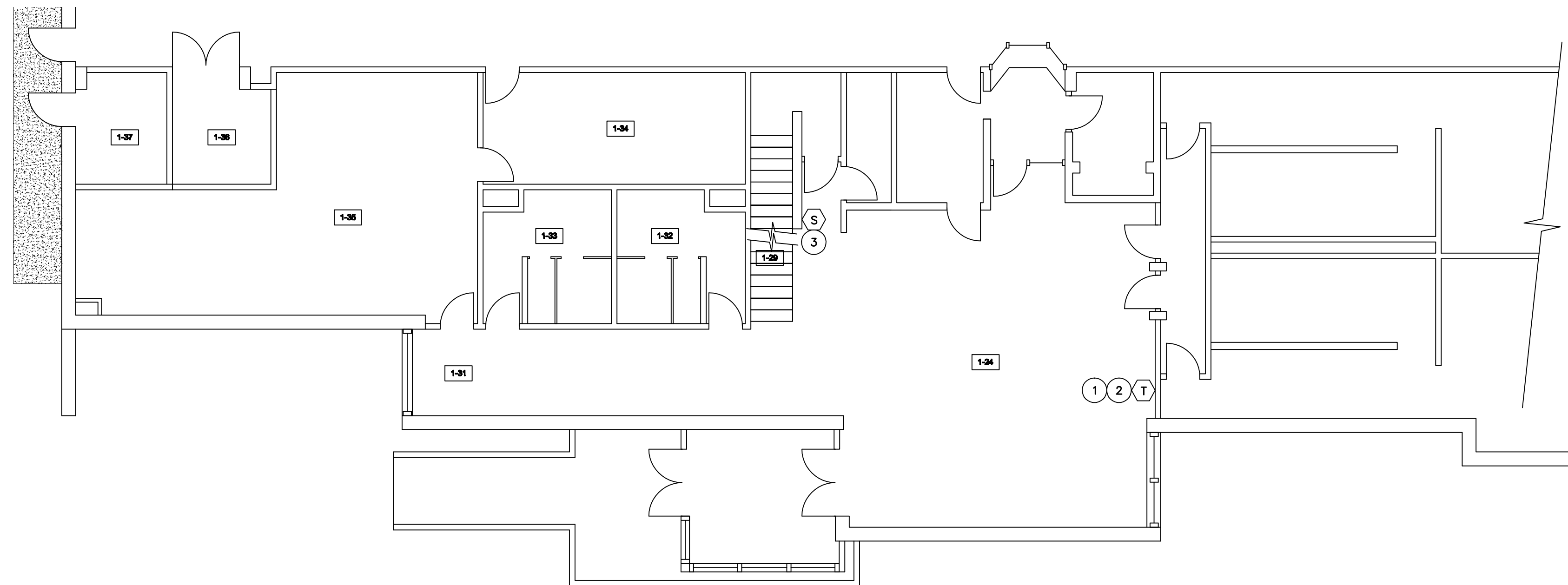
**SUPPLEMENTARY NOTES — MEZZANINE NEW WORK**

1. Existing return duct capped.
2. Existing supply duct capped.
3. Existing supply duct shown modified.
4. Existing remains as is.
5. New return ductwork.
6. New return grille. Existing opening enlarged c/w required framing.
7. New wall opening.
8. Connect to existing.
9. New supply ductwork.
10. Balance as indicated.
11. Suspend fan from floor at low level horizontal below existing ductwork c/w vibration spring isolation arrangement with flex connection each side using uni-strut base stand arrangement off floor c/w neoprene pad.
12. Suspend fan from floor at low level vertical c/w vibration spring isolation arrangement with flex connection each side using uni-strut base stand arrangement off floor c/w neoprene pad.
13. New condensing unit. Provide locking guide.
14. New refrigeration piping to follow same route as existing. Open and patch walls to suit.
15. New supply grille. Existing opening enlarged c/w new framing.
16. Relief air motorized damper. Size as indicated c/w access door.
17. Cased filter section c/w piano hinged access door.
18. Provide access door downstream of heating element.
19. Cased cooling coil c/w cooling coil drip to drain. Note plumbing modifier will be required in order to reuse existing cooling coil drip arrangement.
20. New relief louver. Line up with existing.
21. Outside air and return air motorized dampers. Size as indicated c/w access door.
22. Existing outside air louver remains as is c/w ductwork up to Mezzanine room. Provide new connection.
23. Offset ductwork low level to set supply fan at low level.
24. Existing relief louver remains as is.
25. Existing ductwork.
26. Maintain existing control.
27. New cap to be installed as part of Request for Separate Price.
28. New connect to existing c/w balancing damper as part of Request for Separate Price.
29. Drop down tight to underside of existing ductwork.
30. Where ductwork at low level provide wall brackets, as part of Request for Separate Price.
31. Connect to existing.



**MEZZANINE PART PLAN - NEW WORK**

SCALE: 1/8" = 1'-0"

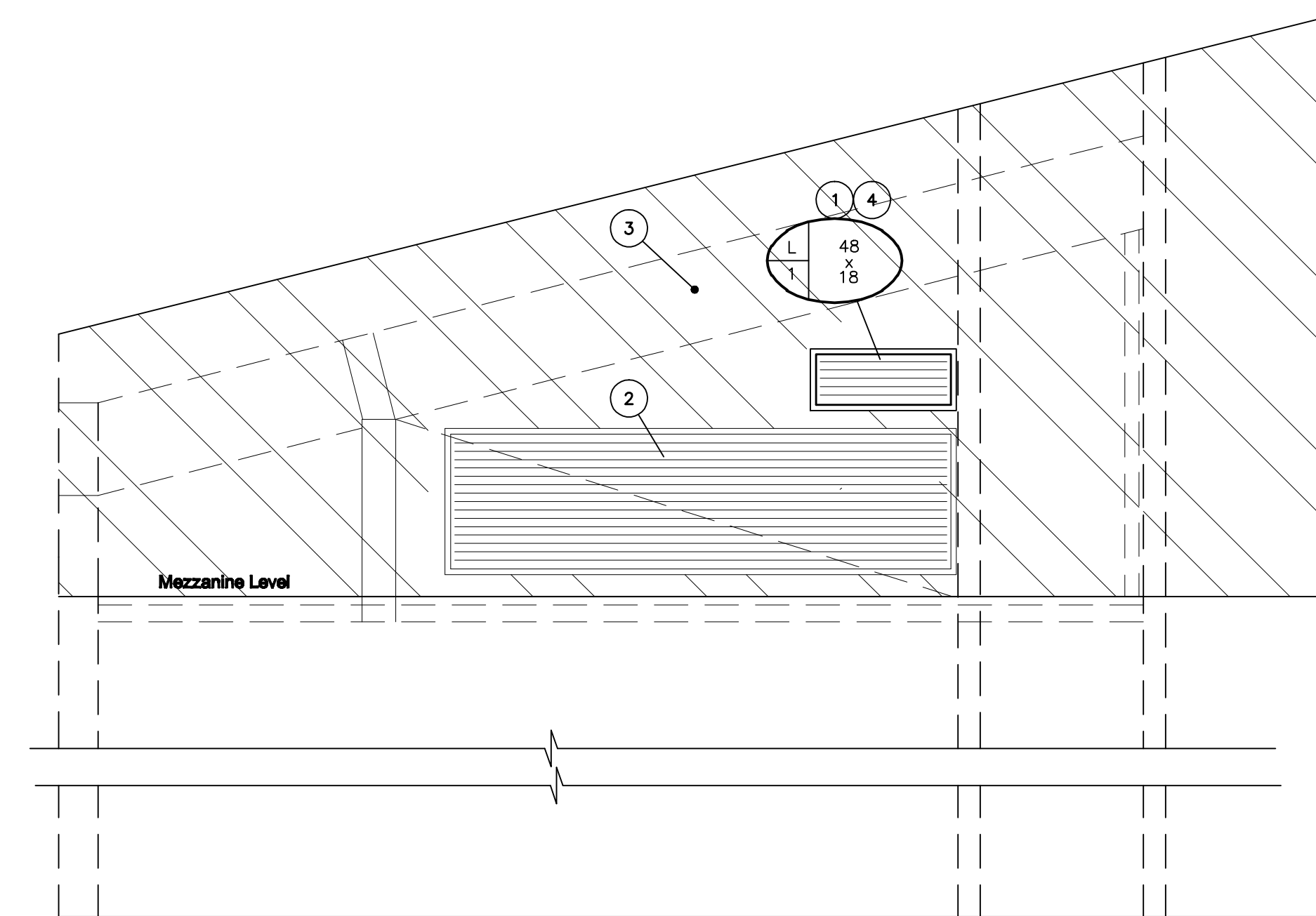


**MAIN FLOOR PART PLAN - NEW WORK**

SCALE: 1/8" = 1'-0"

**MAIN FLOOR NEW WORK**

1. Assumes existing sensor is off existing metasys system, to remain as is. (SF-2)
2. Assumes existing cooling only thermostat to be removed. New heating/cooling thermostat to be installed as part of new work.
3. Maintain existing.



**1 ELEVATION**

SCALE: 1/4" = 1'-0"

**SUPPLEMENTARY NOTES — ELEVATIONS AND SECTION NEW WORK**

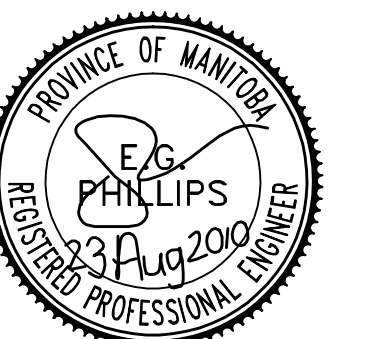
1. New wall opening.
2. Existing relief louver remains as is.
3. Existing glue lam beam.
4. New relief louver. Line up with existing.

TPM MECHANICAL CONSULTANTS LTD.  
101-100 ST. JAMES STREET 101  
PH: 431-0510 FAX: 431-0509  
**unies** Ltd. Consulting Engineers

**APEGM**  
Certificate of Authorization  
Unies Ltd.  
No. 186 Expiry: April 30, 2011

NO.	REVISION/DESCRIPTION	BY	DATE
R 1	FOR TENDER	BP/SP	23 AUG 2010
R 0	FOR REVIEW	BP/SP	27 JULY 2010

SEALS



DRAWN BY: NNL/P CHECKED BY: BP/SP APPROVED: BP/SP  
DATE: 23 AUG 2010 USER APPROVAL

THE CITY OF WINNIPEG  
CIVIC BUILDINGS DEPARTMENT  
4TH FLR.-185 KING ST. R3B 1J1

PROJECT  
**BID OPPORTUNITY 679-2010**  
**Upgrade Air Conditioning System**  
**- Lobby**  
909 CONCORDIA AVENUE  
Winnipeg, Mb.

SHEET TITLE  
**MAIN FLOOR AND MEZZANINE**  
**MECHANICAL PART PLANS &**  
**ELEVATIONS**  
**NEW WORK**

SCALE	PROJECT NO	SHEET NO
AS NOTED	679-2010	<b>M2</b>