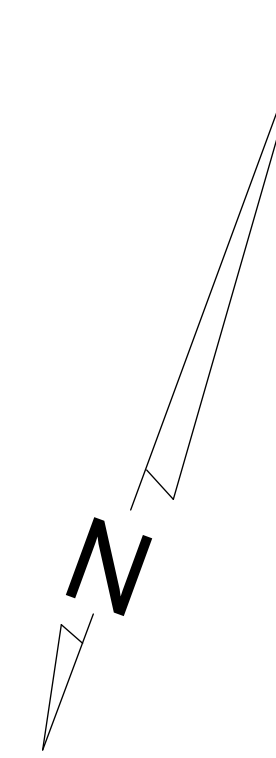
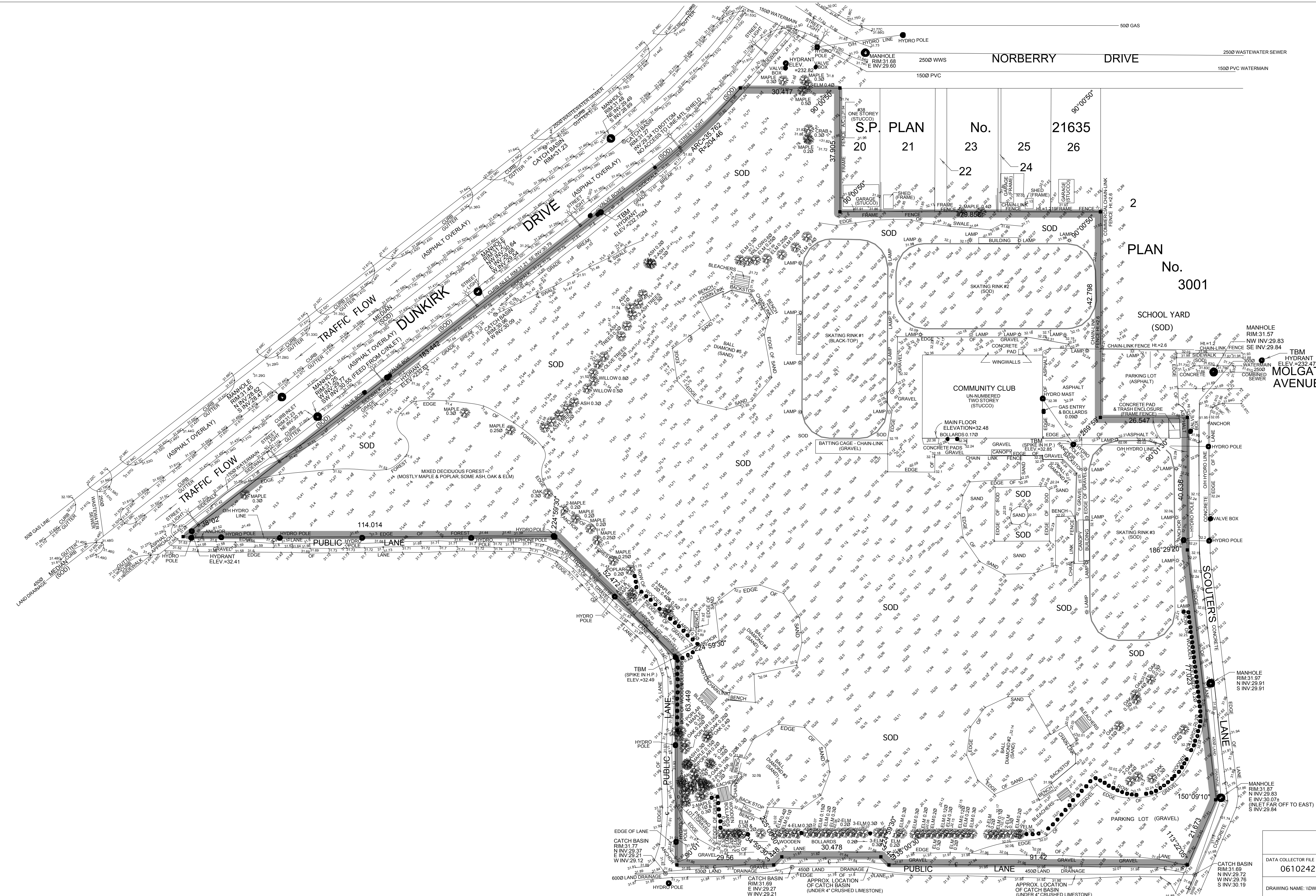


# METRIC



- WATER MAIN
  - MTS
  - HYDRO
  - WASTE WATER SYSTEM
  - COMBINED SEWER
  - GAS
  - LAND DRAINAGE SYSTEM
- 
- STREETLIGHTS
  - LAMP POSTS
  - BOLLARDS
  - CATCH BASINS
  - MANHOLES
  - HYDRO POLES
  - ANCHORS
  - HYDRANTS
  - WATER VALVES
  - TREES



## TOPOGRAPHIC SURVEY

### NORBERRY-GLENLEE COMMUNITY CLUB 38 MOLGAT AVENUE

LOCATED TO:  
THE EAST OF THE EASTERN LIMIT OF DUNKIRK DRIVE  
WINNIPEG, MANITOBA

SURVEYED FOR:  
CALNITSKY ASSOCIATES ARCHITECTS  
124 NASSAU STREET NORTH  
WINNIPEG, MANITOBA  
R3L 2H1

LEGAL DESCRIPTION:  
SP LOTS 17, 18 AND 19 PLAN 21635 WLTO IN RL'S 37, 39 AND 40, PARISH OF ST. VITAL  
AND IS SHOWN BORDERED THUS.....

CERTIFICATE OF TITLE No.'s 489065, 509038, AND 838606 W.L.T.O.  
CAVEAT No. 378196 IS REGISTERED AGAINST CERTIFICATE OF TITLE NO. 509038.

LEGEND AND NOTES:  
DIMENSIONS SHOWN ARE IN METRES AND DECIMALS OF A METRE.  
IRON POSTS WERE PLACED AT ALL POINTS SHOWN THUS.....  
ELEVATIONS ARE BASED ON CITY OF WINNIPEG BENCHMARK NUMBERED  
54-013 ELEVATION: 232.291 METRES.  
FOR GEODETIC ELEVATIONS, ADD 200 METRES.  
ELEVATIONS ARE REFERRED TO POINTS SHOWN THUS.....  
ELEVATIONS OF CURBS ARE SHOWN THUS.....  
ELEVATIONS OF GUTTERS ARE SHOWN THUS.....

THE LOCATION OF UNDERGROUND STRUCTURE AND RESPECTIVE INVERTS ARE SHOWN BASED ON THE  
BEST AVAILABLE INFORMATION SUPPLIED BY THE CITY OF WINNIPEG. NO GUARANTEE IS GIVEN THAT  
ALL EXISTING UTILITIES ARE SHOWN.

EXACT LOCATION OF UNDERGROUND SERVICES SHOULD BE CHECKED WITH THE UTILITIES PRIOR TO  
CONSTRUCTION OR EXCAVATION.

L. N. McLAUGHLIN, M.L.S., C.L.S.

SCALE	1:500	DRAWN BY:	S.A.B.	SHEET :
DATE	NOVEMBER 23, 2006	CHECKED BY:	L.N.M.	1 OF 1
DATA COLLECTOR FILE NAME:	0610242R	ARCHIVE FILE NO.	728M/06	
DRAWING NAME: \\DWGSERVER\DRAWINGS\LES\SITES\NORBERRY GLENLEE COMMUNITY CLUB\TOPO\PL21635 NORBERRY GLENLEE COMMUNITY CLUB CALNITSKY TOPO.DWG				