

**GENERAL NOTES:**

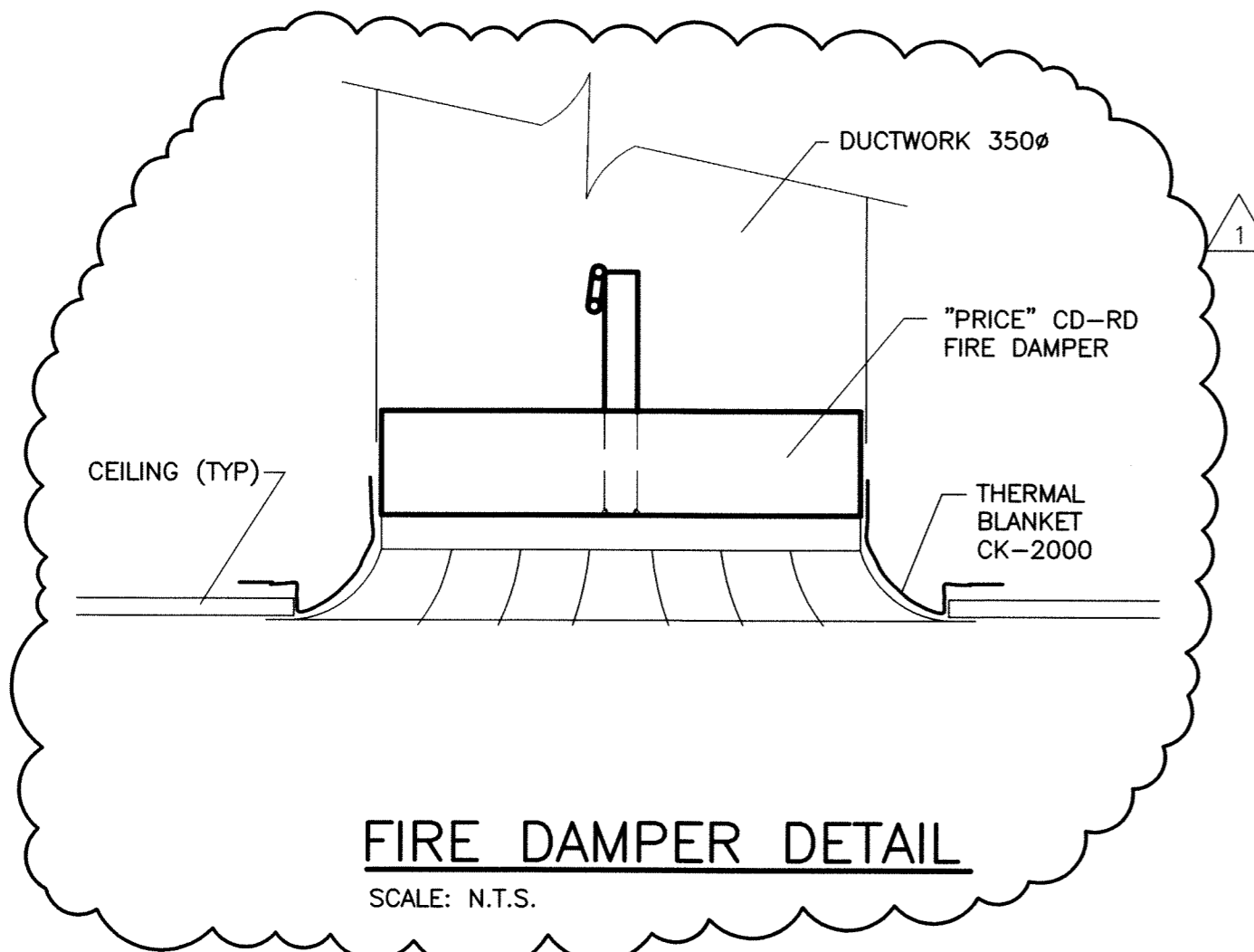
1. PERFORM WORK IN ACCORDANCE WITH ALL APPLICABLE CODES AND REGULATIONS.
2. REVIEW EQUIPMENT LOCATIONS WITH CONTRACT ADMINISTRATOR PRIOR TO INSTALLATION.
3. DUCT ROUTING INDICATED ON DRAWINGS ARE APPROXIMATE ONLY. CONFIRM IN FIELD, REROUTE DUCTING TO ELIMINATE FIELD INTERFERENCES WITH BUILDING STRUCTURES, ELECTRICAL ETC. CONFIRM CHANGES WITH CONTRACT ADMINISTRATOR.
4. CONFORM TO SMACNA STANDARDS FOR SUPPLY AND INSTALLATION OF DUCTWORK.
5. PROVIDE ALL WALL/ROOF PENETRATIONS AND CURBS.
6. SEAL ALL WALL/ROOF PENETRATIONS AND DUCTWORK WATER/AIR TIGHT.
7. PROVIDE ACCESS DOORS FOR ALL EQUIPMENT AND DAMPERS LOCATED ABOVE DRYWALL CEILINGS.
8. REVISE SPRINKLER PIPING WHERE REQUIRED TO FACILITATE INSTALLATION OF NEW HVAC SYSTEM. SPRINKLER MODIFICATION TO BE DESIGNED BY A QUALIFIED SPRINKLER ENGINEER TO MEET NEPA 13.

**KEY NOTES:**

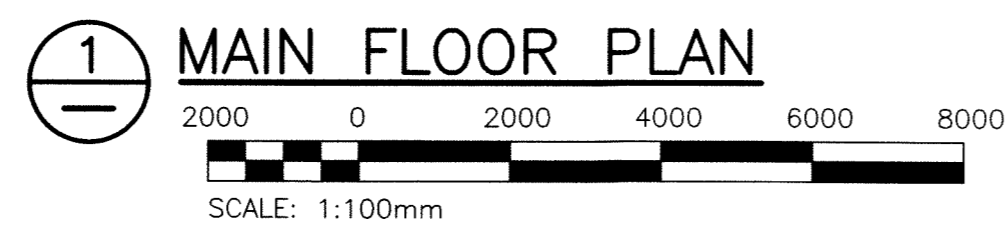
1. CONNECT NEW DIFFUSERS TO DUCTWORK ABOVE. (SEE DRAWING M5). PROVIDE FIRE DAMPERS AND FIRE SEAL TO MAINTAIN RATED CEILING.
2. PROVIDE NEW BALANCING DAMPER ON THE EXISTING RETURN DUCT.
3. PROVIDE NEW UL/C LISTED CHIMNEY TO SUIT EXISTING FURNACES. PROVIDE ROOF PENETRATIONS. CONFORM TO CSA B149.1-05. RE-LOCATE EXISTING CONDENSING UNIT LOCATED ON ROOF TO SUIT. PROVIDE POWER, CONTROL AND REFRIGERANT PIPING MODIFICATIONS AND CURBING TO SUIT.

**LEGEND:**

- NEW EQUIPMENT OR DUCTWORK
- EXISTING EQUIPMENT OR DUCTWORK
- - - CONTROL WIRING
- (T) THERMOSTAT
- (B) BALANCE DAMPER
- (F) 1.5 HOUR FIRE DAMPER C/W ACCESS DOOR
- G1 200ø NECK SIZE (mm) AIR FLOW
- G2 600ø NECK SIZE (mm) AIR FLOW
- G3 750ø NECK SIZE (mm) AIR FLOW



GRILLE SCHEDULE		
TAG	PRICE DESIGNATION	COMMENTS
G1	350ø/RCDA/B12	ROUND CONE DIFFUSER
G2	600ø/80/F/A/B12	EGG CRATE RETURN
G3	750ø/80/F/A/B12	EGG CRATE RETURN



KGS FILE NO.: P:\PROJECTS\2008\08-0107-09\DWG\MECH\08-0107-09-P1-M04.dwg

<b>KGS GROUP</b> CONSULTING ENGINEERS & PROJECT MANAGERS WINNIPEG (204) 898-1209 THUNDER BAY (807) 345-2233		ENGINEER'S SEAL THE ORIGINAL ISSUE REV. 0 WAS STAMPED, DATED AND SIGNED BY P.S. SILVA, P.ENG. ON 2010/01/28
DESIGNED BY PSS DRAWN BY VJH	CHECKED BY RED APPROVED BY PSS	RELEASED FOR CONSTRUCTION: DATE
HOR. SCALE: AS SHOWN VERTICAL:		CONSULTANT DRAWING NO. <b>P1-M04</b>
1 ISSUED FOR ADDENDUM NO. 1 10/02/28 0 ISSUED FOR TENDER 10/01/28	NO. REVISIONS DATE BY	PROJECT TITLE <b>FORT ROUGE LEISURE CENTRE          HVAC UPGRADES - PHASE 1</b>

Certificate of Authorization  
 KGS Group  
 No. 245 Date: 2010/02/26

**THE CITY OF WINNIPEG**  
 PUBLIC WORKS DEPARTMENT

PROJECT TITLE  
**FORT ROUGE LEISURE CENTRE  
 HVAC UPGRADES - PHASE 1**

SHEET OF  
**001 OF 001**  
 COMPUTER FILE NAME  
**08-0107-09-P1-M04**  
 CITY DRAWING NUMBER

**MAIN FLOOR PLAN  
 NEW HVAC**