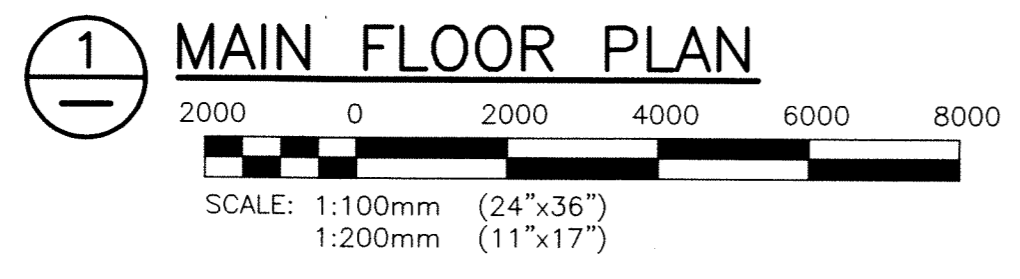


- NOTES:**
1. PROVIDE A SIX ZONE LIGHTING CONTROL PANEL. PROVIDE A SWITCH PANEL AT DOOR TO SELECT EACH ZONE. SWITCHES SHALL HAVE A LOCKABLE COVER.
  2. ALL LIGHTING WITHIN ROOM TO BE ON A LIGHTING CONTACTOR. CONTACTOR TO BE CONTROLLED FROM A KEYPED LIGHT SWITCH AT DOOR.
  3. PROVIDE 2 ADDITIONAL 360W 12VDC BATTERY BANKS (AT TWO LOCATIONS FOR A TOTAL OF 4). BANKS SHALL BE COMPLETE WITH ZONE SENSING TO TURN ON AT LOSS OF POWER TO ANY CIRCUIT FEEDING THE AREA LIGHTS.
  4. EXISTING BATTERY BANKS PROVIDE POWER FOR EXIT LIGHTING ALL READY IN PLACE. ENSURE EXIT SIGN POWER IS MAINTAINED.

- LEGEND:**
- FLUORESCENT LUMINAIRE (1'x4')  
HATCHING DENOTES NIGHT LIGHT (TYP.)
  - WALL MOUNTED LUMINAIRE
  - DUAL REMOTE EMERGENCY LIGHTING HEADS  
HD = HEAVY DUTY  
N = NEW LOCATION
  - SINGLE POLE SWITCH
  - EMERGENCY LIGHTING BATTERY UNIT (NOTE 4)

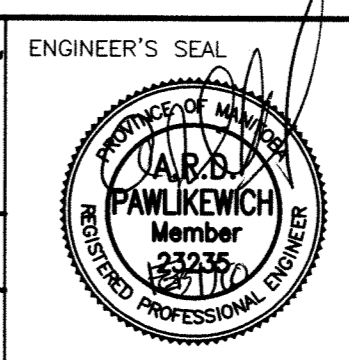
**GENERAL NOTES:**  
WHERE NEW LIGHTING OR EMERGENCY LIGHTING IS INSTALLED, REMOVE AND DISPOSE OF EXISTING EQUIPMENT BEING REPLACED.



**APEGM**  
Certificate of Authorization  
KGS Group  
No. 245 Date: 27/01/10

B.M.			
ELEV.			
DESIGNED BY	AP	CHECKED BY	
DRAWN BY	BGO	APPROVED BY	
HOR. SCALE:	AS SHOWN	RELEASED FOR CONSTRUCTION:	
VERTICAL:		DATE	
0 ISSUED FOR TENDER	27/01/10	BY	
NO. REVISIONS	DATE	BY	DATE

**KGS GROUP** CONSULTING ENGINEERS & PROJECT MANAGERS  
WINNIPEG (204) 896-1209  
THUNDER BAY (807) 345-2233



**THE CITY OF WINNIPEG**  
PUBLIC WORKS DEPARTMENT

PROJECT TITLE: FORT ROUGE LEISURE CENTRE HVAC UPGRADES - PHASE 1  
SHEET 001 OF 001  
COMPUTER FILE NAME: 08-0107-09E05  
CITY DRAWING NUMBER: MAIN FLOOR PLAN LIGHTING ARRANGEMENT

CONSULTANT DRAWING NO. P1-E05