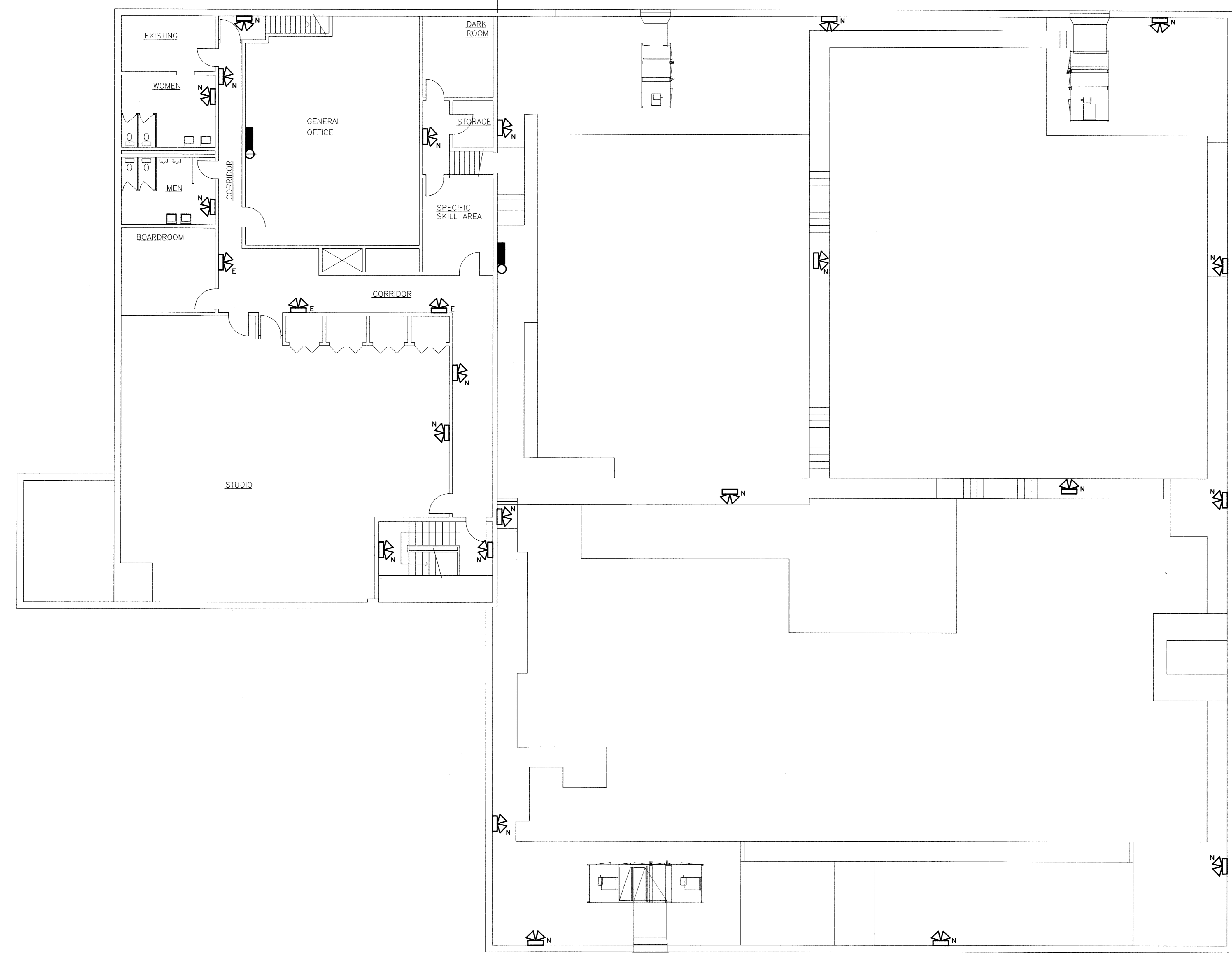





WEST WING EAST WING

NOTES:
 1. EXISTING BATTERY BANKS PROVIDE POWER FOR EXIT LIGHTING ALL READY IN PLACE. ENSURE EXIT SIGN POWER IS MAINTAINED.



LEGEND:
 2 x 20W MR-16 12VDC EMERGENCY LIGHT
 SINGLE POLE SWITCH
 EMERGENCY LIGHTING BATTERY UNIT (NOTE 1)

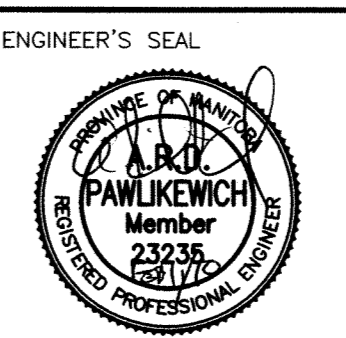
1 MEZZANINE/SECOND FLOOR PLAN
 SCALE: 1:100mm (24"x36")
 1:200mm (11"x17")

APEGM
 Certificate of Authorization
 KGS Group
 No. 245 Date: 27/01/10

B.M.					
ELEV.					
NO.	ISSUED FOR TENDER	27/01/10	BY		
NO.	REVISIONS	DATE	BY	DATE	

KGS GROUP
 CONSULTING ENGINEERS & PROJECT MANAGERS
 WINNIPEG (204) 896-1209
 THUNDER BAY (807) 345-2233

DESIGNED BY: AP	CHECKED BY:
DRAWN BY: BGO	APPROVED BY:
HOR. SCALE: AS SHOWN	RELEASED FOR CONSTRUCTION:
VERTICAL:	DATE:



CONSULTANT DRAWING NO.
P1-E06

THE CITY OF WINNIPEG
 PUBLIC WORKS DEPARTMENT

PROJECT TITLE
 FORT ROUGE LEISURE CENTRE
 HVAC UPGRADES - PHASE 1
SECOND/MEZZANINE FLOOR PLAN
 LIGHTING ARRANGEMENT

SHEET OF	001 OF 001
COMPUTER FILE NAME	08-0107-09E06
CITY DRAWING NUMBER	