

GENERAL NOTES:

1. PERFORM WORK IN ACCORDANCE WITH ALL APPLICABLE CODES AND REGULATIONS.
2. REVIEW EQUIPMENT LOCATIONS WITH CONTRACT ADMINISTRATOR PRIOR TO INSTALLATION.
3. DUCT ROUTING INDICATED ON DRAWINGS ARE APPROXIMATE ONLY. CONFIRM IN FIELD. REROUTE DUCTING TO ELIMINATE FIELD INTERFERENCES WITH BUILDING STRUCTURES, ELECTRICAL ETC. CONFIRM CHANGES WITH CONTRACT ADMINISTRATOR.
4. CONFORM TO SMACNA STANDARDS FOR SUPPLY AND INSTALLATION OF DUCTWORK.
5. PROVIDE ALL WALL/ROOF PENETRATIONS AND CURBS.
6. SEAL ALL WALL/ROOF PENETRATIONS AND DUCTWORK WATER/AIR TIGHT.
7. PROVIDE ACCESS DOORS FOR ALL EQUIPMENT AND DAMPERS LOCATED ABOVE DRYWALL CEILINGS.
8. REVISE SPRINKLER PIPING WHERE REQUIRED TO FACILITATE INSTALLATION OF NEW HVAC SYSTEM. SPRINKLER MODIFICATION TO BE DESIGNED BY A QUALIFIED SPRINKLER ENGINEER TO MEET NEPA 13.

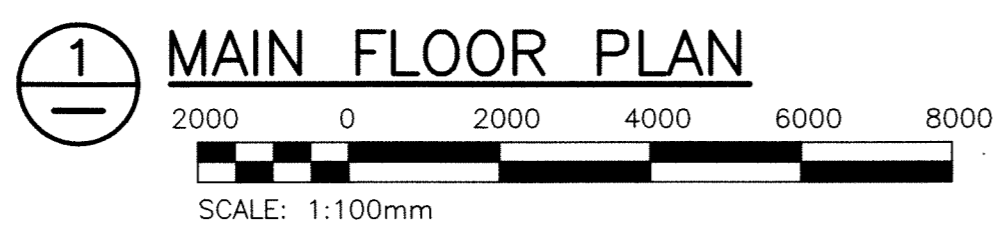
KEY NOTES:

- ① CONNECT NEW DIFFUSERS TO DUCTWORK ABOVE. (SEE DRAWING M5). PROVIDE FIRE DAMPERS AND FIRE SEAL TO MAINTAIN RATED CEILING.
- ② PROVIDE NEW BALANCING DAMPER ON THE EXISTING RETURN DUCT.

LEGEND:

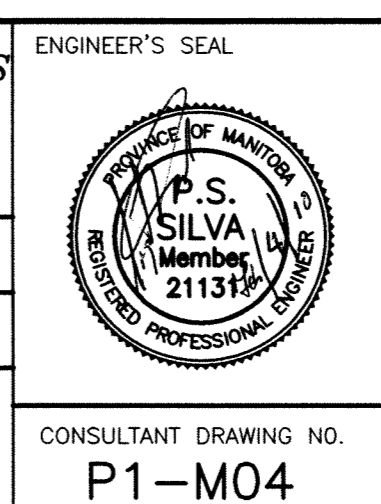
- NEW EQUIPMENT OR DUCTWORK
- - - EXISTING EQUIPMENT OR DUCTWORK
- - - CONTROL WIRING
- ⊕ T THERMOSTAT
- ⊕ B BALANCE DAMPER
- ⊕ F 1.5 HOUR FIRE DAMPER C/W ACCESS DOOR
- ⊕ G1 GRILLE NO.
- ⊕ 200ø NECK SIZE (mm)
- ⊕ 160 L/s AIR FLOW

GRILLE SCHEDULE		
TAG	PRICE DESIGNATION	COMMENTS
G1	350ø/RCDA/B12	ROUND CONE DIFFUSER
G2	600x600/80/F/A/B12	EGG CRATE RETURN
G3	750x750/80/F/A/B12	EGG CRATE RETURN



B.M. ELEV.			
DESIGNED BY	PSS	CHECKED BY	<i>AW</i>
DRAWN BY	VJH	APPROVED BY	<i>[Signature]</i>
HOR. SCALE:	AS SHOWN	RELEASED FOR CONSTRUCTION:	
VERTICAL:		DATE	
NO.	REVISIONS	DATE	BY
0	ISSUED FOR TENDER	10/01/28	

KGS GROUP
 CONSULTING ENGINEERS & PROJECT MANAGERS
 WINNIPEG (204) 896-1209
 THUNDER BAY (807) 345-2233



THE CITY OF WINNIPEG
 PUBLIC WORKS DEPARTMENT

PROJECT TITLE
**FORT ROUGE LEISURE CENTRE
 HVAC UPGRADES - PHASE 1**

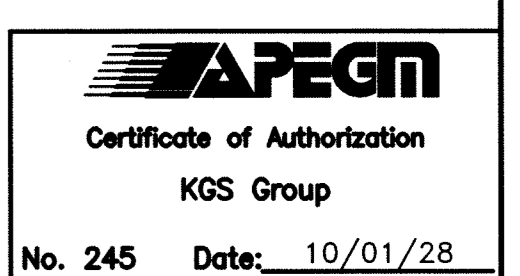
SHEET **001** OF **001**

COMPUTER FILE NAME
08-0107-09-P1-M04

CITY DRAWING NUMBER

CONSULTANT DRAWING NO.
P1-M04

**MAIN FLOOR PLAN
 NEW HVAC**



KGS FILE NO.: P:\PROJECTS\2008\08-0107-09\DWG\MECH\08-0107-09-P1-M04.dwg