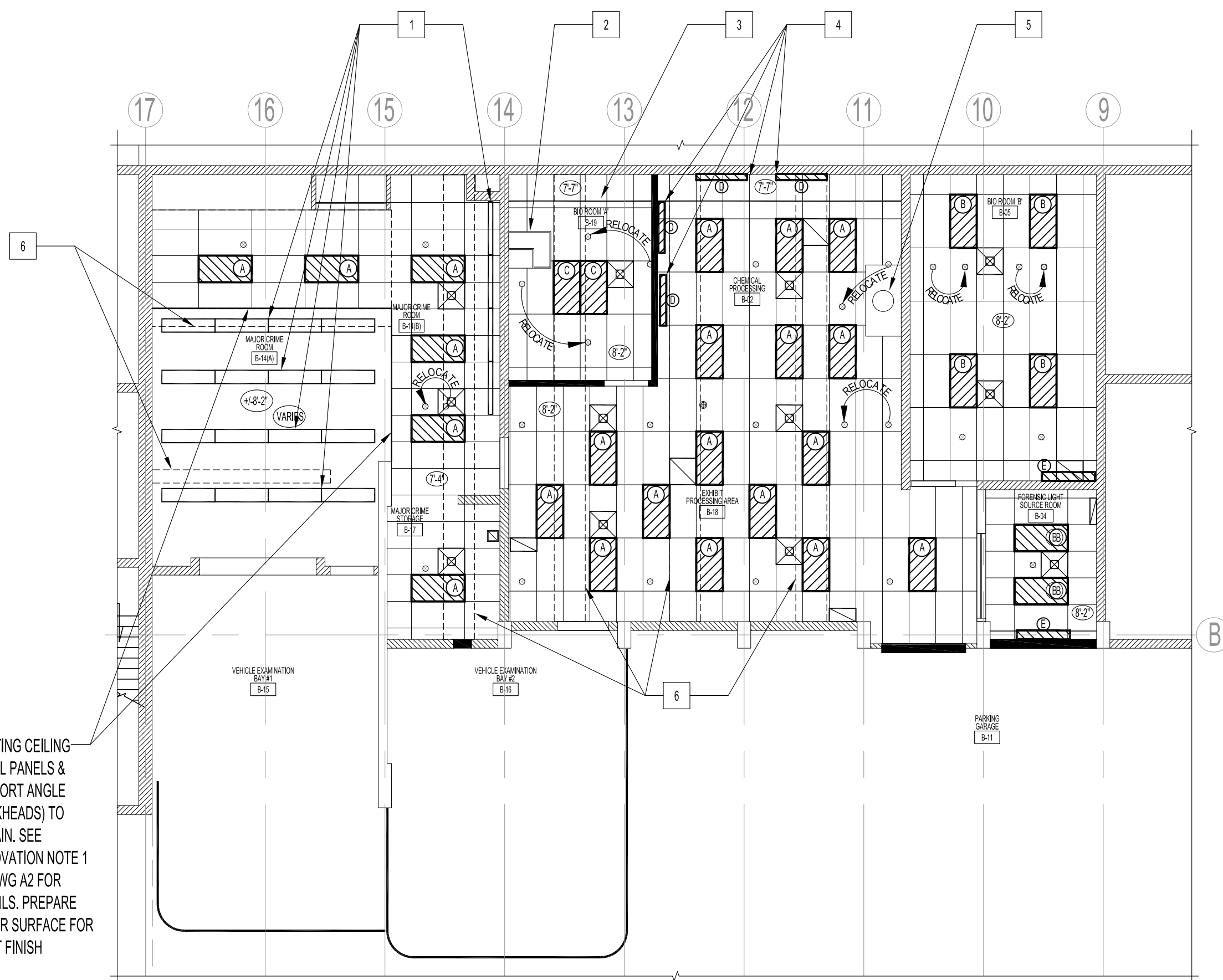


PARTIAL BASEMENT FLOOR PLAN - REFLECTED CEILING DEMOLITION
SCALE: 1/8"=1'-0"



PARTIAL BASEMENT FLOOR PLAN - REFLECTED CEILING RENOVATION
SCALE: 1/8"=1'-0"

DEMOLITION NOTES:

- ① EXISTING SUSPENDED FLUORESCENT LIGHT FIXTURES IN MAJOR CRIME ROOM B-14A & UNDER CABINET FLUORESCENT LIGHT FIXTURES IN MAJOR CRIME ROOM 14B TO REMAIN. SEE LEGEND.
- ② WALL MOUNTED FLUORESCENT LIGHT FIXTURES TO BE REMOVED AND DISCARDED. SEE LEGEND FOR SIMILAR LIGHT FIXTURES.

LEGEND

8'-0" CEILING HEIGHT (VARIES)

ACOUSTIC CEILING TILE & T-BAR SYSTEM TO BE REMOVED & DISCARDED.

NEW 2' x 4' ACOUSTIC CEILING TILE & T-BAR SYSTEM TO BE CGC SHEETROCK BRAND, LAY-IN CEILING SYSTEM PANEL CLIMA-PLUS CLEAN ROOM #3200 IW/ TYPE 'C-AX' PROFILE.

MAJOR CRIME ROOM 14B
EXISTING 1' x 4' RECESSED FLUORESCENT LIGHT FIXTURES TO BE REMOVED & DISCARDED.

TYPES 'A' & 'B' -EXISTING SALVAGED 2' x 4' FLUORESCENT LIGHT FIXTURES TO BE RELOCATED. SEE ELECTRICAL DWG. FOR LIGHT FIXTURE UPGRADES

TYPE 'B' -EXISTING SALVAGED 2' x 4' FLUORESCENT LIGHT FIXTURES TO BE REMAIN. SEE ELECTRICAL DWG. FOR LIGHT FIXTURE UPGRADES

TYPE 'E' -EXISTING SALVAGED 1' x 4' WALL MOUNTED FLUORESCENT LIGHT FIXTURES TO BE RELOCATED. SEE DEMOLITION NOTE ②

MAJOR CRIME ROOM 14A -EXISTING CEILING SUSPENDED 1' x 4' FLUORESCENT LIGHT FIXTURES TO REMAIN.

MAJOR CRIME ROOM 14B -EXISTING UNDER CABINET 4' x 48" FLUORESCENT LIGHT FIXTURES TO REMAIN.

TYPE 'A' -EXISTING SALVAGED 2' x 4' FLUORESCENT LIGHT FIXTURES. SEE ELEC. DWG. FOR FIXTURE UPGRADES.

TYPE 'B' -EXISTING SALVAGED 2' x 4' FLUORESCENT LIGHT FIXTURES. SEE ELEC. DWG. FOR FIXTURE UPGRADES.

TYPE 'C' -EXISTING SALVAGED 2' x 4' FLUORESCENT LIGHT FIXTURES. SEE ELEC. DWG. FOR FIXTURE UPGRADES.

TYPE 'D' -CHEMICAL PROCESSING B-02 -NEW 6" x 48" UNDER CABINET FLUORESCENT LIGHT FIXTURES.

TYPE 'E' -EXISTING SALVAGED 1' x 4' FLUORESCENT LIGHT FIXTURES. SEE ELEC. DWG. FOR FIXTURE UPGRADES.

REMOVE & DISCARD SUPPLY AIR DIFFUSERS

REMOVE & DISCARD EXHAUST/RETURN GRILLES

NEW SUPPLY AIR DIFFUSERS

NEW EXHAUST/RETURN GRILLES

EXISTING NON-CONCEALED SPRINKLER HEADS TO REMAIN.

EXISTING NON-CONCEALED SPRINKLER HEADS TO BE RELOCATED TO LOCATION SHOWN.

RENOVATION NOTES:

- ① SEE LEGEND.
- ② LOCATION OF EXISTING EXPOSED DUCTWORK. ACOUSTIC CEILING TO FRAME AROUND EXISTING DUCTWORK WHICH EXTENDS BELOW CEILING HEIGHT. SEE MECHANICAL DWGS.
- ③ NEW ACOUSTIC CEILING BULKHEAD BELOW EXISTING SPRINKLER MAIN LINE. HEIGHT & LENGTH TO BE SAME AS EXISTING DEMOLISHED BULKHEAD. SEE RENOVATION DWG. & ROOM FINISH SCHEDULE FOR HEIGHT.
- ④ SUPPLY & INSTALL UNDER CABINET LIGHTING BEHIND NEW STAINLESS STEEL VALANCES & CABINETS. SEE ELECTRICAL DWG. FOR DETAILS.
- ⑤ LOCATION OF EXISTING FUME HOOD UNIT. ACOUSTIC CEILING TO FRAME AROUND EXISTING HOOD WHICH EXTENDS BEYOND CEILING HEIGHT. SEE MECHANICAL DWGS.
- ⑥ LOCATION OF NEW METAL DRIP TRAYS ATTACHED TO UIS OF STRUCTURAL CEILING. ADJUST CEILING T-BAR SUSPENSION TIES AS REQUIRED AROUND LOCATION OF DRIP TRAYS. SEE MECH. DRAWING FOR SPECS. OF DRIP STRAYS.

NOTES :

SEE ELECTRICAL & MECHANICAL DRAWINGS FOR LIGHTING & HVAC DETAILS.

ORIGINAL STAMPED BY: R.K. FOK LI, Arch.
DATE: 2010.09.20

NO.	REVISION/DESCRIPTION	BY	DATE
SEALS			

DRAWN BY	CHKD BY	APPROVED
MMK		
DATE	2010.09.10	USER APPROVAL

CITY OF WINNIPEG
PLANNING, PROPERTY AND
DEVELOPMENT DEPARTMENT
CIVIC ACCOMMODATIONS DIVISION
300 - 65 GARRY ST. R3C 4K4

PROJECT
PUBLIC SAFETY BUILDING
WINNIPEG POLICE SERVICES
EXHIBIT PROCESSING AREA DEVELOPMENT
151 PRINCESS STREET

SHEET TITLE
POLICE GARAGE -PARTIAL
BASEMENT FLOOR PLAN, REFLECTED
CEILING -DEMOLITION/RENOVATION

SCALE	PROJECT NO.	SHEET NO.
AS SHOWN	2008-067	A3