

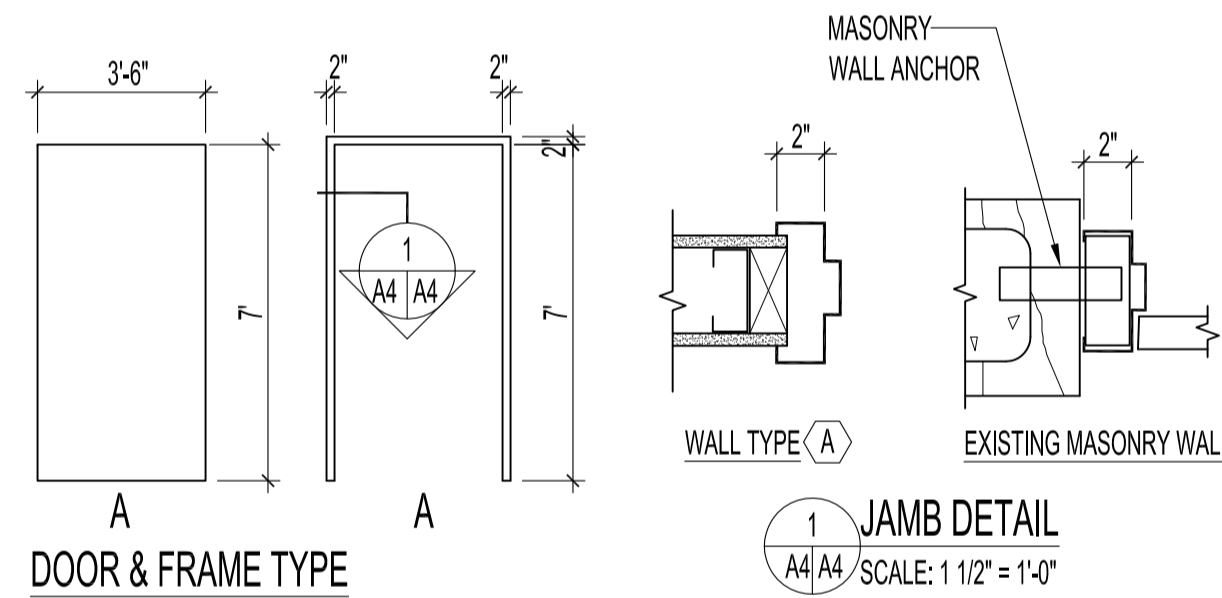
LEGEND	
	VINYL SHEET FLOORING - ARMSTRONG CONNECTION CORLON #88729 'BLUE YONKER' - SEE ROOM FINISH SCHEDULE & SPECS. 4" RUBBER BASEBOARD - JOHNSONITE #189 'OCEAN'
	PT#1 - MPI #59 INTERIOR/EXTERIOR ALKYD FLOOR ENAMEL, LOW GLOSS (COLOUR TO BE DETERMINED) - SEE ROOM FINISH SCHEDULE & SPECS.
	EXISTING 1' x 1' FLOOR TILES TO REMAIN. SEE ROOM FINISH SCHEDULE FOR BASE FINISHES

NOTE: TOTAL AREA OF NEW FLOORING IS 2,360 SQ. FT. AREAS OF BARE CONCRETE (B-14A & B-16) & IS 880 SQ. FT.
 EXISTING EPOXY FLOOR REQUIRES PATCHING OR REMOVAL DUE TO BUBBLING. APPROX. AREA OF PATCHING/LEVELLING & /OR REMOVAL IS +/- 300 SQ. FT.
 SEE DEMOLITION NOTES 7 & 17 FOR FLOOR PATCHING, REPAIRS ETC.

NOTES :
 SEE DEMOLITION DWG. & NOTES FOR FLOOR REPAIRS.

PAINTING SPECIFICATION
 ALL MATERIALS, PREPARATION, WORKMANSHIP SHALL CONFORM TO THE REQUIREMENTS OF THE LATEST EDITION OF THE ARCHITECTURAL PAINTING SPECIFICATION MANUAL BY MASTER PAINTERS INSTITUTE (MPI) - HEREFTER REFERRED TO AS THE MPI PAINTING MANUAL - AS ISSUED BY THE LOCAL MPI ACCREDITED QUALITY ASSURANCE ASSOCIATION HAVING JURISDICTION.

ALL PAINT MANUFACTURERS & PRODUCTS USED SHALL BE AS LISTED UNDER THE APPROVED PRODUCT LIST SECTION OF THE MPI PAINTING MANUAL.



DOOR SCHEDULE												
DOOR NO.	DOOR		FRAME			RATING	HARDWARE CODE	NOTES				
	TYPE	WIDTH	HEIGHT	THICK.	MAT'L.				TYPE	MAT'L.	FINISH	
DB-04	EXISTING				PT.	EXISTING	PT.	1	DOOR & HARDWARE (ONLY) IS SALVAGED. SEE DEMOLITION DWG.			
DB-05	EXISTING				PT.	EXISTING	PT.	1				
DB-14A	EXISTING				PT.	EXISTING			PAINT INTERIOR SIDE OF OVERHEAD DOOR IN ROOM B-14(A) ONLY			
DB-14B	A	3'-6"	7'-0"	1 3/4"	H.M.	PT.	A P.S.	PT.	1 HR. 2			
DB-15	EXISTING				PT.	EXISTING	PT.	EXISTING				
DB-16	A	3'-6"	7'-0"	1 3/4"	H.M.	PT.	A P.S.	PT.	1 HR. 3			
DB-19	EXISTING				PT.	EXISTING	PT.	1	DOOR, FRAME & HARDWARE IS SALVAGED. SEE DEMOLITION DWG.			

ABBREVIATIONS H.M. -HOLLOW METAL P.S. -PRESSED STEEL PT. -PAINT

DOOR HARDWARE CODES						
CODE NUMBER	HINGES	CYLINDER LOCK	SPRINGLOADED LEVER HANDLE	CLOSER	FLOOR STOP	KICKPLATES BIS
1					4A	
2	1A	2A	2B	3A	4A	5A 6A 7A
3	1A	2A	2B	3A		5A 6A 7A

HARDWARE CODES:
 1A 1 1/2 PR. MCKINNEY TA 714 STEEL HINGES 4 1/2" x 4"
 2A SCHLAGE -CYLINDER PRIMUS 20-710 INTERCHANGEABLE CORE 613 FINISH
 2B SCHLAGE LEVER HANDLE
 3A LCN -CLOSER 1461 SERIES SLIM LINE COVER INCL. NON-HANDED
 4A RICHELIEU -FLOOR STOP 471-175 (CONCRETE FLOORS)
 5A STANDARD METAL MFG. -KICKPLATES BIS K10A 12" x 34" 32D
 6A K.N. CROWDER MFG. INC. -DOORSWEEP W13S 36" 689
 7A K.N. CROWDER MFG. INC. -SMOKE SEAL W21 BLACK

ORIGINAL STAMPED BY: R.K. FOK LI, Arch.
 DATE: 2010.09.20

NO.	REVISION/DESCRIPTION	BY	DATE
SEALS			

ROOM FINISH SCHEDULE										
ROOM NO.	ROOM NAME	FLOOR	BASEBOARD	NORTH WALL	SOUTH WALL	EAST WALL	WEST WALL	CEILING	CEILING HEIGHT	NOTES
B-02	CHEMICAL PROCESSING	V.S.F.	6" R.B.B.	PT #2	PT #2	PT #2	PT #2	AC.T.	7'-7" & 8'-2"	
B-04	FORENSIC LIGHT SOURCE ROOM	V.S.F.	6" R.B.B.	PT #2	PT #2	PT #2	PT #2	AC.T.	8'-2"	EXISTING STEEL GLAZING FRAME TO BE PAINTED
B-05	BIO-ROOM 'B'	V.S.F.	6" R.B.B.	PT #2	PT #2	PT #2	PT #2	AC.T.	8'-2"	
B-11	PARKING GARAGE						PT.#2			PAINT ALL WALLS FROM GRIDLINE 9 TO GRIDLINE 13 & TO U/S OF STRUCT. BEAM
B-14(A)	MAJOR CRIME ROOM	PT #1 & ALL CONC. CURBS	PT #1 ALL CONC. BASES	PT #2	PT #2	PT #2	PT #2	AC.T./PT#2	7'-4", 11'-2" TO 12'-0"	
B-14(B)	MAJOR CRIME ROOM	EXISTING	PT.#1 ALL CONC. BASES & CURBS	PT #2	PT #2	PT #2	PT #2	AC.T.	7'-4"	
B-15	VEHICLE EXAMINATION BAY #1	EXISTING		PT #2	PT #2		PT #2			EXISTING ENTRANCE DOOR D-B15 & FRAME TO BE PAINTED, PAINT ALL WALLS TO U/S OF STRUCT. BEAM
B-16	VEHICLE EXAMINATION BAY #2	PT #1			PT #2		PT #2			PAINT ALL WALLS TO U/S OF STRUCT. BEAM
B-17	MAJOR CRIME STORAGE	EXISTING		PT #2	PT #2	PT #2	PT #2	AC.T.	7'-4"	
B-18	EXHIBIT PROCESSING AREA	V.S.F.	6" R.B.B.	PT #2	PT #2	PT #2	PT #2	AC.T.	8'-2"	
B-19	BIO-ROOM 'A'	V.S.F.	6" R.B.B.	PT #2	PT #2	PT #2	PT #2	AC.T.	7'-7" & 8'-2"	

ABBREVIATIONS
 AC.T. -ACOUSTIC TILE -SEE REFLECTED CEILING PLAN FOR TYPE
 R.B.B. -4" RUBBER BASEBOARD -SEE LEGEND
 V.S.F. -VINYL SHEET FLOORING -SEE LEGEND
 PT#1 -VEHICLE EXAMINATION BAYS -PAINT COLOUR TO BE DETERMINED -SEE LEGEND
 PT #2 -ALL NEW & EXISTING WALLS (COLOUR TO BE DETERMINED)
 PT #3 -ALL NEW & EXISTING DOORS & FRAMES (OVERHEAD GARAGE DOOR EXEMPT, FRAME ONLY)

DRAWN BY MMK **CHECKED BY** USER APPROVAL
DATE 2010.09.10

CITY OF WINNIPEG
 PLANNING, PROPERTY AND DEVELOPMENT DEPARTMENT
 CIVIC ACCOMMODATIONS DIVISION
 300 - 65 GARRY ST. R3C 4K4

PROJECT
 PUBLIC SAFETY BUILDING
 WINNIPEG POLICE SERVICES
 EXHIBIT PROCESSING AREA DEVELOPMENT
 151 PRINCESS STREET

SHEET TITLE
 POLICE GARAGE
 PARTIAL BASEMENT FLOOR PLAN -FLOOR FINISH, SCHEDULES & DETAILS

SCALE AS SHOWN **PROJECT NO.** 2008-067 **SHEET NO.** A4

DRAWING SHEET SIZE: A1 (841mm x 594mm) PLOT 1:1