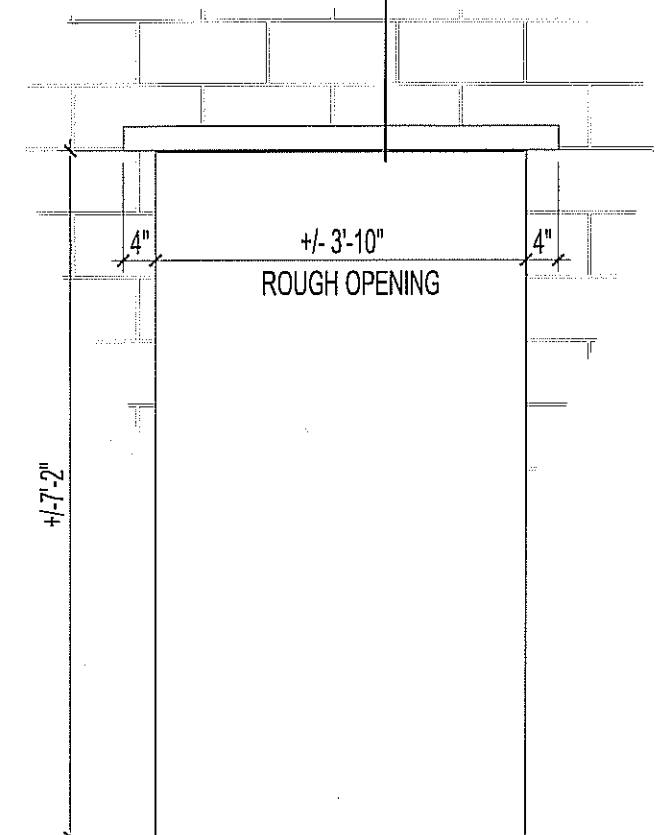


NOTES:

1. STEEL ANGLES & PLATE SHALL BE GRADE G40.21 300W.
2. WELDING SHALL CONFORM TO CAN/CSA S16 & CSA W59.

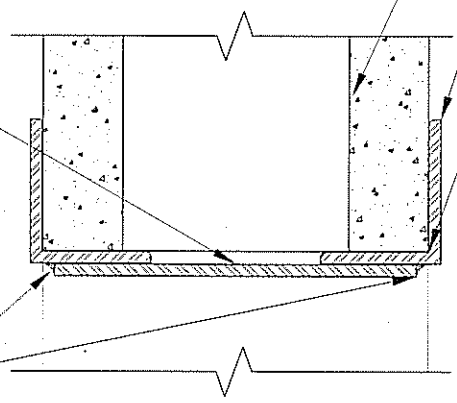
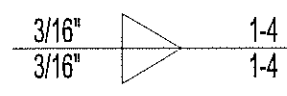
INSTALLATION PROCEDURE FOR DOOR OPENING IN MASONRY WALL

1. SAW CUT HORIZONTAL KERFS AT REQUIRED LOCATIONS. ENSURE SUFFICIENT VERTICAL CLEARANCE FOR OVERHEAD SILL PLATE PLUS DOOR FRAME.
2. INSTALL ANGLE LINTELS, EACH FACE OF WALL.
3. CUT ROUGH OPENINGS FOR DOORWAYS AND DEMOLISH MASONRY.
4. FIELD WELD OVERHEAD SILL PLATE IN PLACE, PER WELD SPEC.
5. PATCH AND /OR GROUT ANY NECESSARY MASONRY REPAIRS.



A ELEVATION -DOORS BD-14 & DB-16
 A2 DS1 SCALE: 1/2" = 1'-0"

7 1/2" x (ROUGH OPENING MINUS 1/2") x 1/4"
 OVERHEAD SILL PLATE



1 SECTION -DOOR LINTEL
 DS1 DS1 SCALE: 3" = 1'-0"

EXISTING 8" MASONRY BLOCK WALL (TYPICAL)
 NEW (2) L 3" x 2 1/2" x 1/4" LLV
 BEVEL GRIND BLOCK EDGES TO FLUSH FIT ANGLE



CITY OF WINNIPEG PLANNING, PROPERTY AND DEVELOPMENT DEPARTMENT CIVIC ACCOMMODATIONS DIVISION 300-65 GARRY STREET R3C 4K4		PROJECT PUBLIC SAFETY BLDG. -WPG. POLICE SERVICES EXHIBIT PROCESSING AREA DEVELOPMENT 151 PRINCESS STREET		SHEET TITLE STEEL LINTELS FOR DOOR OPENINGS DB-14 & DB-16 -ELEVATION, SECTION & NOTES	
DRAWN BY	CHECKED BY	APPROVED BY	DATE	SCALE	SHEET NO.
MMK	B.C.P.	B.C.P.	2009.01.10	AS SHOWN	
			eFILE	PROJECT NO.	DS1
			2008067DS1V0.dwg/DS1	2008-067	