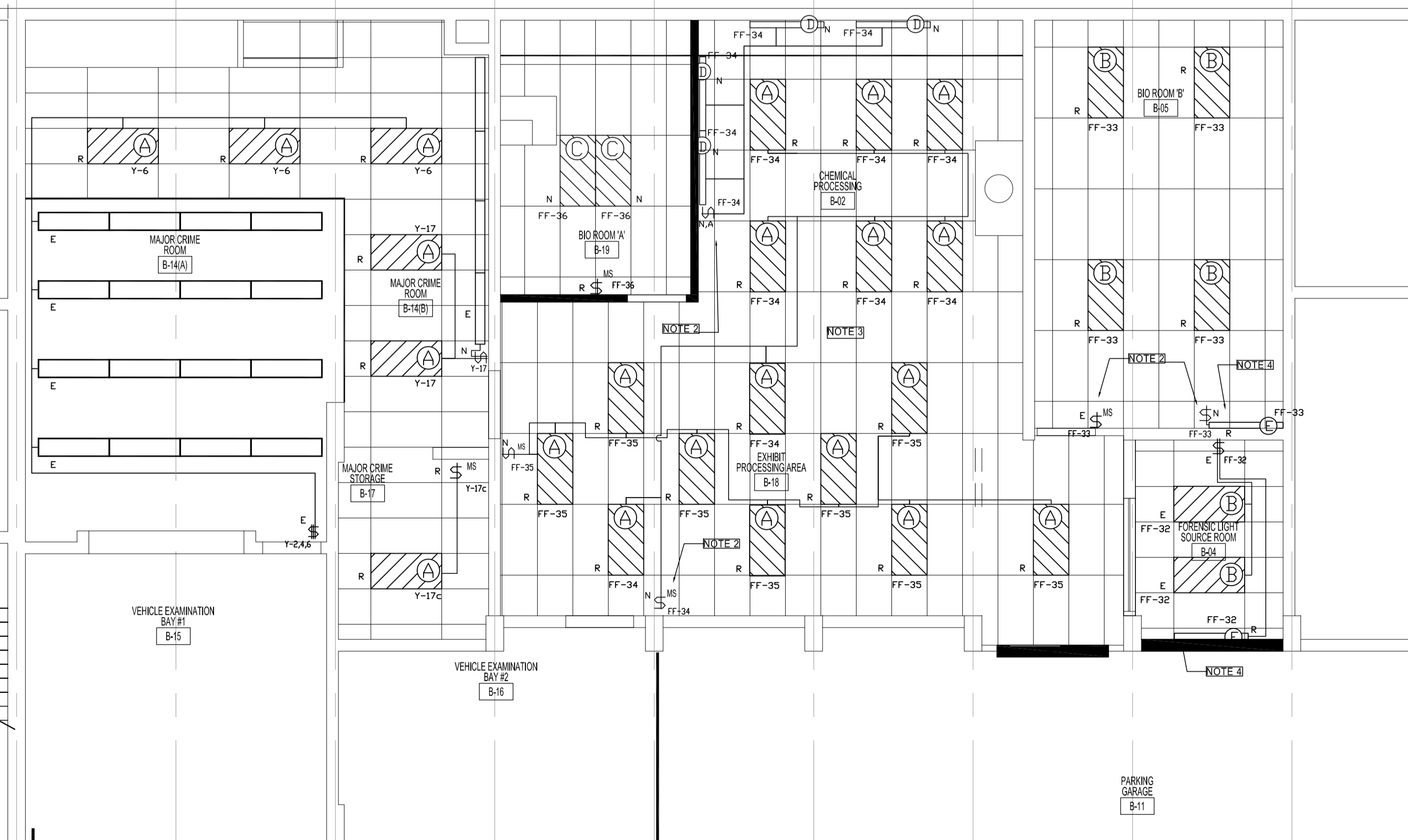
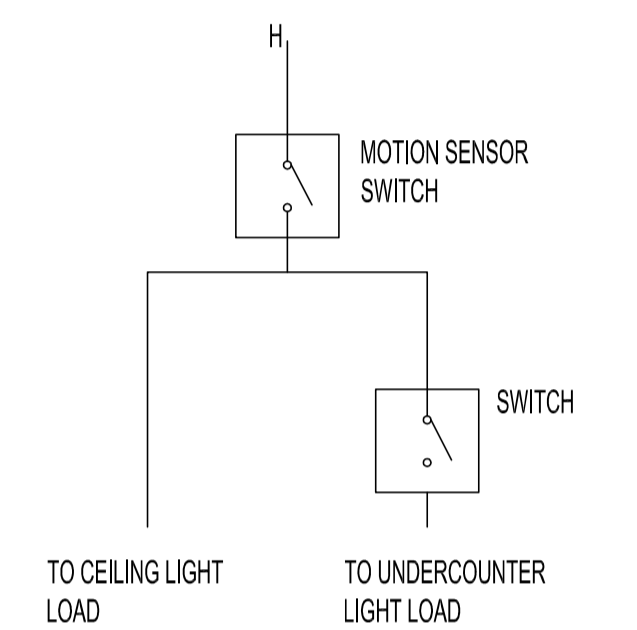


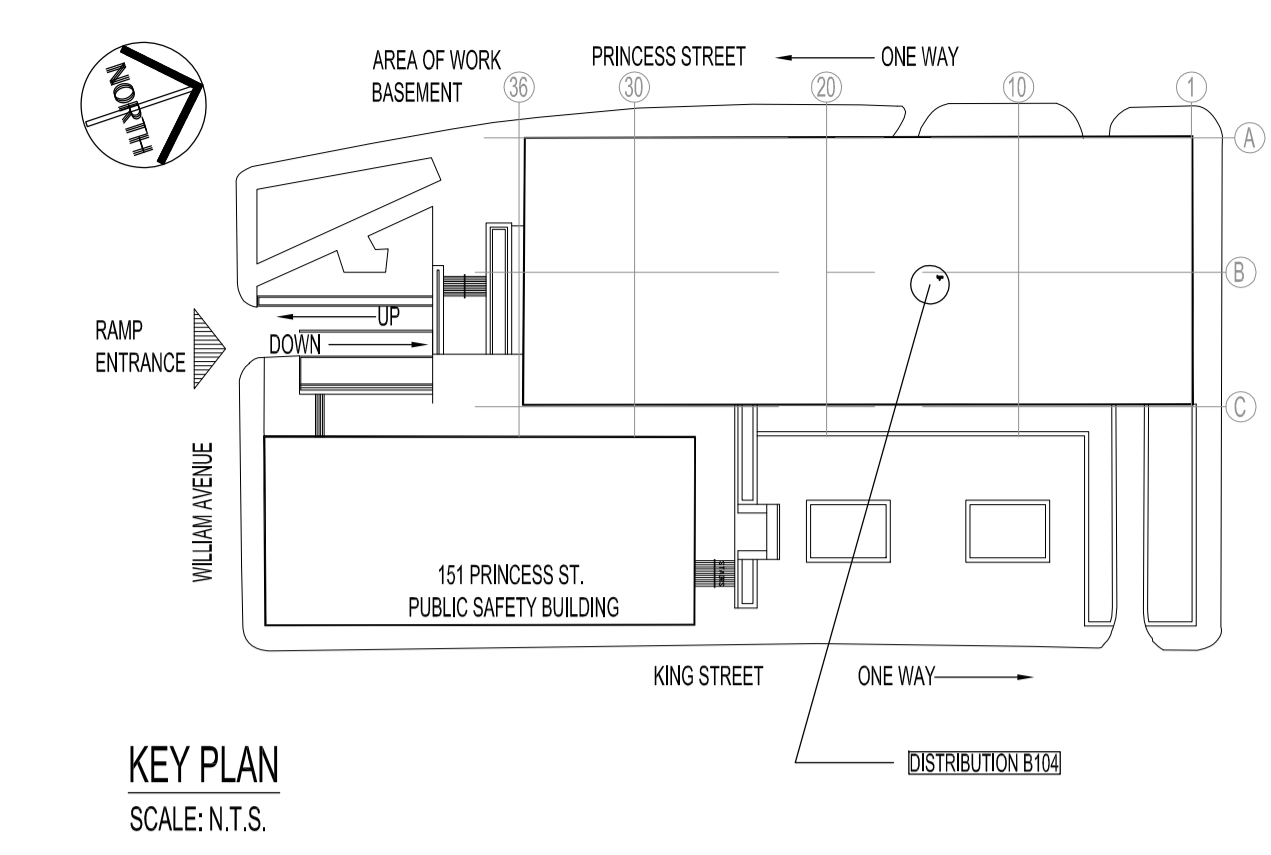
1 PARTIAL BASEMENT FLOOR PLAN - ELECTRICAL RENOVATION
 E-2 SCALE: 3/16" = 1'-0"



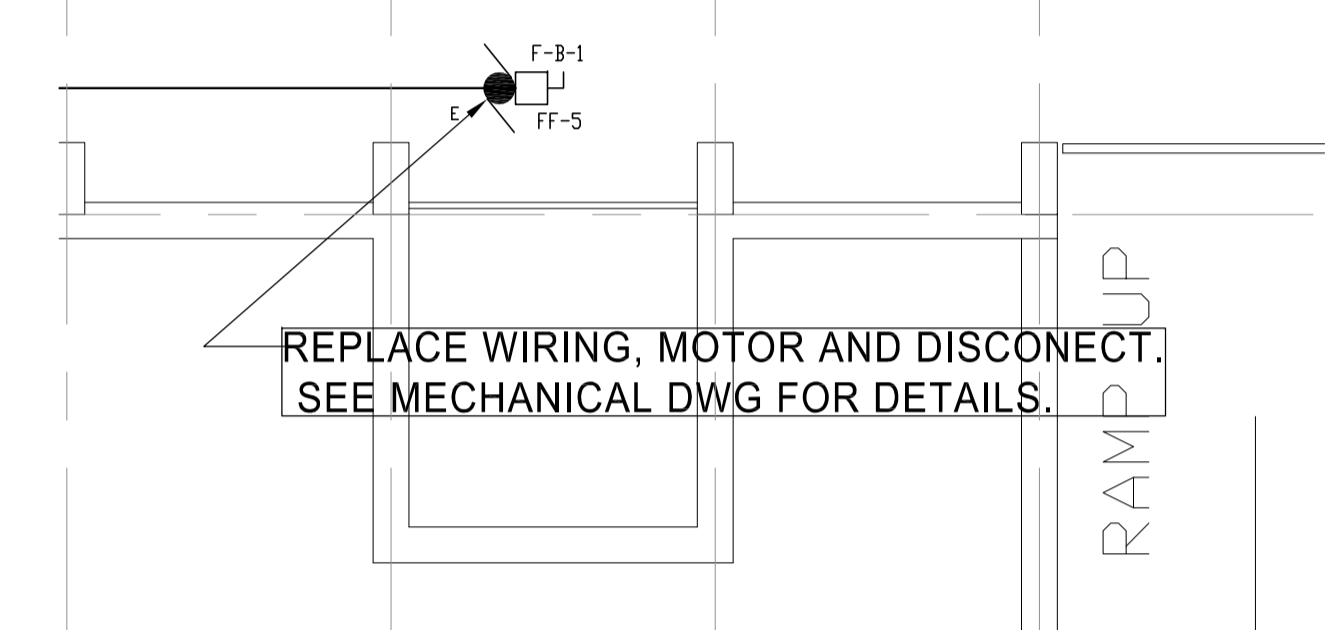
2 PARTIAL BASEMENT FLOOR PLAN - LIGHTING RENOVATION
 E-2 SCALE: 3/16" = 1'-0"



3 LIGHTING SWITCH CONNECTIONS
 E-2 SCALE: N.T.S.



KEY PLAN
 SCALE: N.T.S.



4 EXISTING ELECTRICAL PLAN - INFORMATIONAL ONLY FUME HOOD FAN
 E-2 SCALE: 3/16" = 1'-0"

NOTES :
 THE CONTRACTOR SHALL VISIT THE SITE AND SATISFY HIMSELF ALL DIMENSIONS, DATUM, AND DETAILED INFORMATION SHOWN ARE CORRECT.
 THE CONTRACTOR IS TO REVIEW AND COORDINATE ALL ARCHITECTURAL, MECHANICAL, ELECTRICAL AND STRUCTURAL DRAWINGS FOR ADDITIONAL OPENINGS THROUGH FLOORS, WALLS, AND CEILINGS FOR DUCT, PIPE & ELECTRICAL RISERS AND ALL OPENINGS NOT SHOWN ON DRAWINGS.
 ALL OPENINGS THROUGH FIRE ASSEMBLIES ARE TO BE FIRE STOPPED AND SEALED WITH ULIC APPROVED FIRE STOPPING TO MAINTAIN THE INTEGRITY OF THE FIRE SEPARATION, AND PROVIDE A SMOKE-TIGHT BARRIER.
 ALL PRODUCTS AND MATERIALS TO BE USED AND INSTALLED SHALL CONFORM WITH MANUFACTURER'S SPECIFICATIONS & APPLICABLE CODES.
 THE CONTRACTOR SHALL BE RESPONSIBLE TO PATCH AND MAKE GOOD ALL EXISTING CONSTRUCTION AFFECTED BY THE REMOVAL OF ALL ITEMS FORMING THE PART OF THE RENOVATION WORK.

- PANEL "Y" IS A TEMPORARY DRAWING ONLY DESIGNATION. FIND THE BREAKER LABEL IN THE DISTRIBUTION BOARD B104 (SEE KEY PLAN FOR LOCATION), FEEDING THE PANEL AND LABEL THE PANEL AND ALL THE EQUIPMENT FED FROM THE PANEL (E.G. SUB-PANELS, RECEPTACLES...) WITH NEW DESIGNATION.
- FOR WIRING SEE DWG. E-2/3
- ALL TYPE "A" AND TYPE "B" LUMINAIRES TO BE RE-LAMPED AND RE-BALLASTED. TYPE "A" LUMINAIRES TO HAVE LENSES REPLACED. SEE DWG: E-3 FOR SPECIFICATIONS.
- ALL RECESSED MOUNTED LUMINAIRES TO BE SECURED WITH AVIATION CABLE ATTACHED TO THE CONCRETE CEILING.
- LUMINAIRE TO BE SAME HEIGHT AS EXISTING
- TRACE WIRING TO PANEL.
- MOUNT W/ON A POWER POLE HUBBELL PRODUCT #HBLPPO12AL WITHIN ARMS REACH. CONSULT WITH PROJECT ADMINISTRATOR BEFORE INSTALLING. NEW MANUAL MOTOR STARTER TO BE WATERPROOF. REWIRE AND MAINTAIN INTERCONNECTION WITH EXISTING UNITS (e.g. MAU-1, FM)
- EXISTING CONDUITS, JUNCTION BOXES AND OTHER DEVICES IN THE CEILING TO BE REPLACED AND MOUNTED TO ACCOMMODATE DRIP PANS. SEE MECHANICAL DRAWINGS FOR DETAILS.

PANEL Y 120/208/3φ/4w 225A I_{sc}=10kA

NOTE	DESCRIPTION	CCT	PWR. (W)	BRK. A	A B C	BRK. A	PWR. (W)	CCT	DESCRIPTION	NOTE
	RECEPTACLE	1	15					2	MAIN AREA LIGHTS	
A	RECEPTACLE	3	15					4	MAIN AREA LIGHTS	
A	RECEPTACLE	5	15					6	MAIN AREA LIGHTS	
A	MAJOR CRIME STORAGE RECEPTACLES	7	15					8	AC	A
	COUNTER RECEPTACLE GFCI	9	15					10		
	COUNTER RECEPTACLE GFCI	11	15					12	SPARE	
	RECEPTACLE	13	15					14		
A	BASEBOARD HEATER MAJOR CRIME STORAGE (B-1) AND ROOM B-14(B) LIGHTS	15	15				100	16	HEAT CONTROL PANEL	
	RECEPTACLE GFCI	17	15					18		
	RECEPTACLE GFCI	19	15					20		
	SPARE	21	15				100	22	SUB-PANEL ON ADJACENT WALL	
A	RECEPTACLE	23	15					24		
	RECEPTACLE	25	15					26		
A	RECEPTACLE	27	15				60	28	RECEPTACLE	
	BATTERY BANK RECEPTACLE	29	15					30		

NOTES:
 A. TRACE/VERIFY WIRING. LABEL DEVICE.

ORIGINAL STAMPED BY: D.A PALEY, P.ENG
 DATE: 2010.09.21

PANEL FF 120/208/3φ/4W 225A

NOTE	DESCRIPTION	CCT	PWR. (W)	BRK. A	A B C	BRK. A	PWR. (W)	CCT	DESCRIPTION	NOTE
	MAKE-UP AIR UNIT	1				20	3120	22	CHEMICAL PROCESSING (B-02) FOC OVEN RECEPTACLE	
	MAKE-UP AIR UNIT	2		15				23	CHEMICAL PROCESSING (B-02) ABOVE COUNTER RECEPTACLE	
	MAKE-UP AIR UNIT	3				15		24	CHEMICAL PROCESSING (B-02) ABOVE COUNTER RECEPTACLE	
	RETURN AIR FAN F-8-1	4	15					25	BIO ROOM "A" (B-19) RECEPTACLE	
	FUME HOOD EXHAUST F-8-1	5	15			15	616	26	BIO ROOM "A" (B-19) RECEPTACLE	
	AHJ-1	6				15	616	27	BIO ROOM "A" (B-19) RECEPTACLE	
	AHJ-1	7				15	616	28	BIO ROOM "A" (B-19) RECEPTACLE	
	AHJ-1	8				15	616	29	EXHIBIT PROCESSING AREA (B-16) WASHER RECEPTACLE	
	MAJOR CRIME W/ATCER RECEPT	9	20			15		30	EXHIBIT PROCESSING AREA (B-16) RECEPTACLE	
	EXHIBIT PROCESSING AREA (B-16) FROZER RECEPTACLE	10	15			20		31	OFFICE (B-04) RECEPTACLE	
A/F-2	EXHIBIT PROCESSING AREA (B-16) FROZER RECEPTACLE	11	15			15	200	32	LIGHTS OFFICE (B-04)	
	BIO ROOM "B" (B-02) RECEPTACLE	12	15			15	610	33	LIGHTS BIO ROOM "B" (B-02)	
	BIO ROOM "B" (B-02) RECEPTACLE	13	616	15		15	600	34	LIGHTS (B-02, B-16)	
	BIO ROOM "B" (B-02) RECEPTACLE	14	616	15		15	550	35	LIGHTS (B-02, B-16)	
	BIO ROOM "B" (B-02) RECEPTACLE	15	616	15		15	220	36	LIGHTS BIO ROOM "B" (B-16)	
	BIO ROOM "B" (B-02) RECEPTACLE	16	616	15		15	37	FUME HOOD LIGHTS (B-02)		
	BIO ROOM "B" (B-02) RECEPTACLE	17						38		
	BIO ROOM "B" (B-02) RECEPTACLE	18						39		
	CHEMICAL PROCESSING (B-02) COUNTER RECEPTACLE	19	15					40		
	CHEMICAL PROCESSING (B-02) COUNTER RECEPTACLE	20	15					41		
	CHEMICAL PROCESSING (B-02) COUNTER RECEPTACLE	21	15					42		

NOTES:
 A. DESIGNATION DENOTES EXISTING PANEL/CCT THAT CCT HAS BEEN TRANSFERRED FROM. PANEL LOCATIONS SHOWN ON DWG. E-1/11

NO.	REVISION/DESCRIPTION	BY	DATE
SEALS			

DRAWN BY VC **CHECKED BY** VC **APPROVED** APR
DATE 2010.09.20 **USER APPROVAL**

CITY OF WINNIPEG
 PLANNING, PROPERTY AND DEVELOPMENT DEPARTMENT
 CIVIC ACCOMMODATIONS DIVISION
 300 - 65 GARRY ST. R3C 4K4

PROJECT
 PUBLIC SAFETY BUILDING
 EXHIBIT PROCESSING AREA DEVELOPMENT

151 PRINCESS STREET
SHEET TITLE

PARTIAL BASEMENT FLOOR PLAN
 ELECTRICAL
 RENOVATION

SCALE	PROJECT NO.	SHEET NO.
AS SHOWN	2008-067	E2