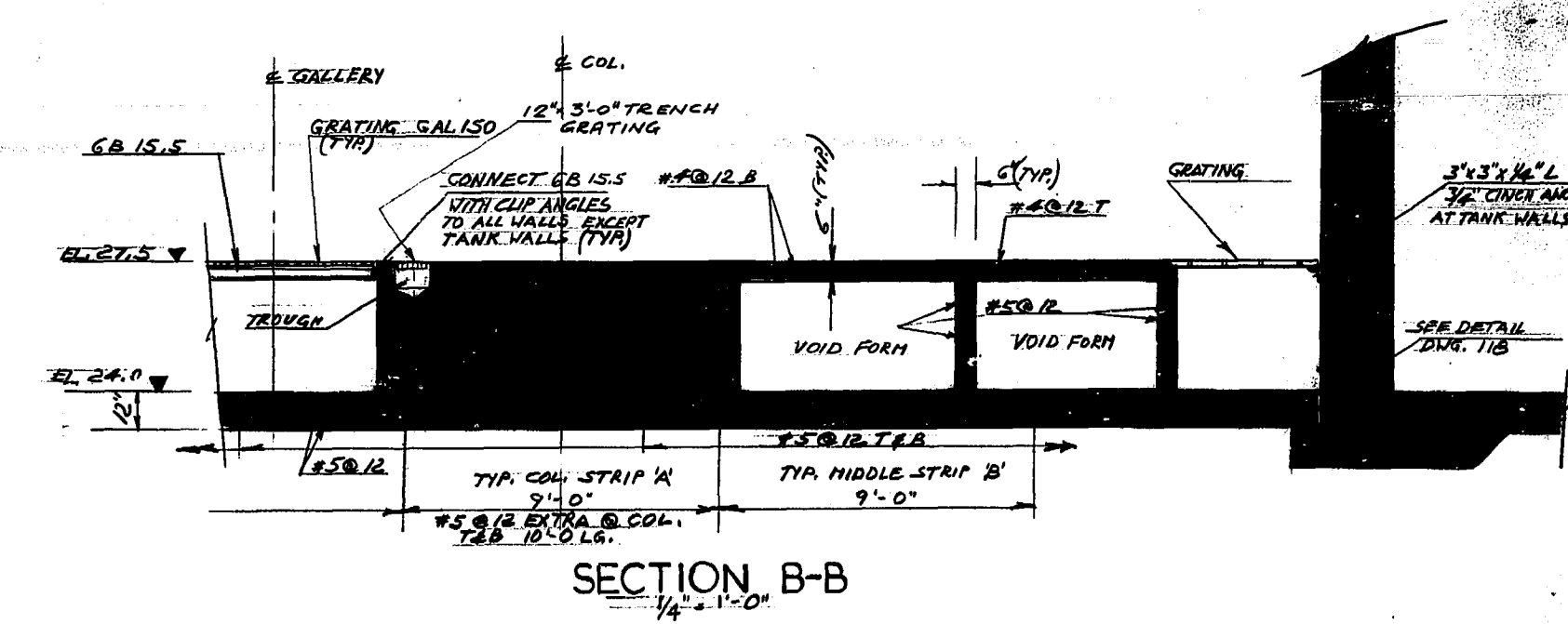
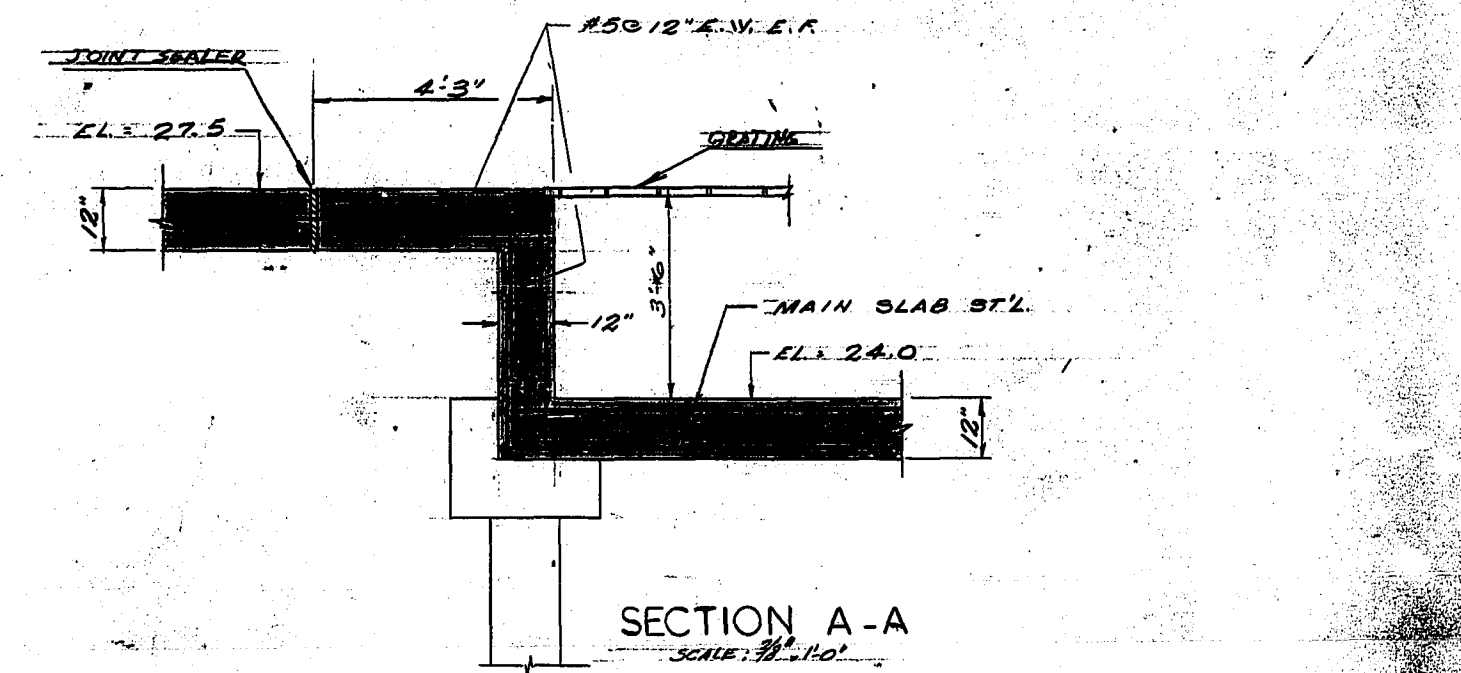


FOUNDATION SLAB REINF.

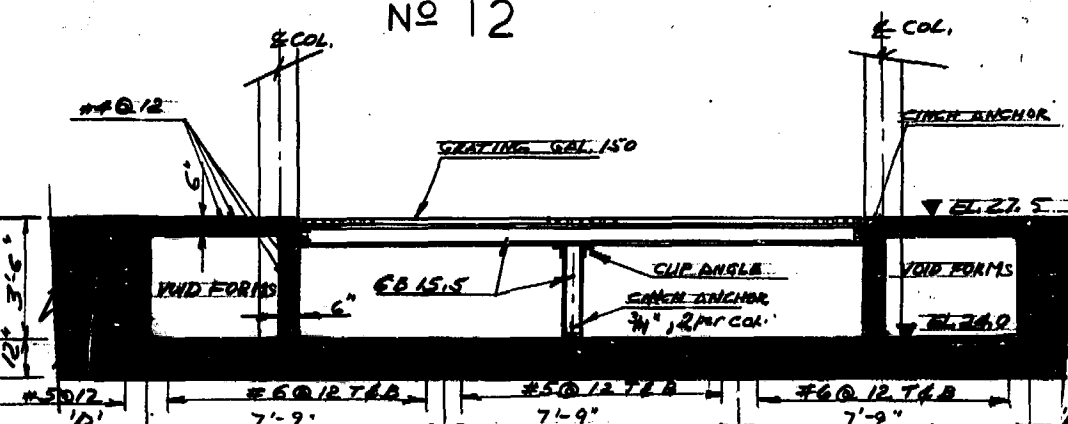
PANEL MARK	REINF.	EXTRA REINF. AT COLUMN.
A - COL. STRIP	#50/12 T.F.B.	#50/12 T.F.B. x 10'-0" LONG.
B - MIDDLE STRIP	#50/12 T.F.B.	
C - COL. STRIP	#60/12 T.F.B.	#50/12 T.F.B. x 10'-0" LONG.
D - MIDDLE STRIP	#50/12 T.F.B.	

PLACE 7-#6 @ 6" O.C. x 16'-0" LONG BARS E.W. BOT. AT LOCATION OF PUMP BASES. FOR SIZES OF PUMP BASES SEE DWG. NO. 113.



THIS DRAWING IS VOID SEE DETAIL DWG. No. 19

NOTE:  
ALL COLS. 14" x 14"  
REINF. - 4-#7 VERT.  
#3 @ 12" TICS.



FOUNDATION PLAN - GALLERY No. 5  
SCALE: 1/8" = 1'-0"

SECTION C-C  
SCALE: 1/4" = 1'-0"

FOR ACTUAL ELEV. AS BUILT  
SUBTRACT 0.37 FT.

REVISIONS

NO.	DATE	DETAIL

THE METROPOLITAN CORPORATION OF GREATER WINNIPEG  
WATERWORKS AND WASTE DISPOSAL DIVISION

**NORTH END SEWAGE TREATMENT PLANT**

**CONTRACT A - DIGESTION AREA**

**STRUCTURAL - GALLERY No. 5**

**FOUNDATION PLAN EL.-240 & 275**

APPROVED  
  
 J. W. MacLaren  
 REGISTERED ENGINEER

APPROVED  
  
 D. R. Grimes  
 REGISTERED ENGINEER

W.L. WARDROP ASSOCIATES  
(MANAGEMENT) LIMITED  
ENGINEERING CONSULTANTS WINNIPEG

DATE: MARCH 11, 1963  
SCALE: AS SHOWN  
DWG. No. 113 OF 217  
NEP-113