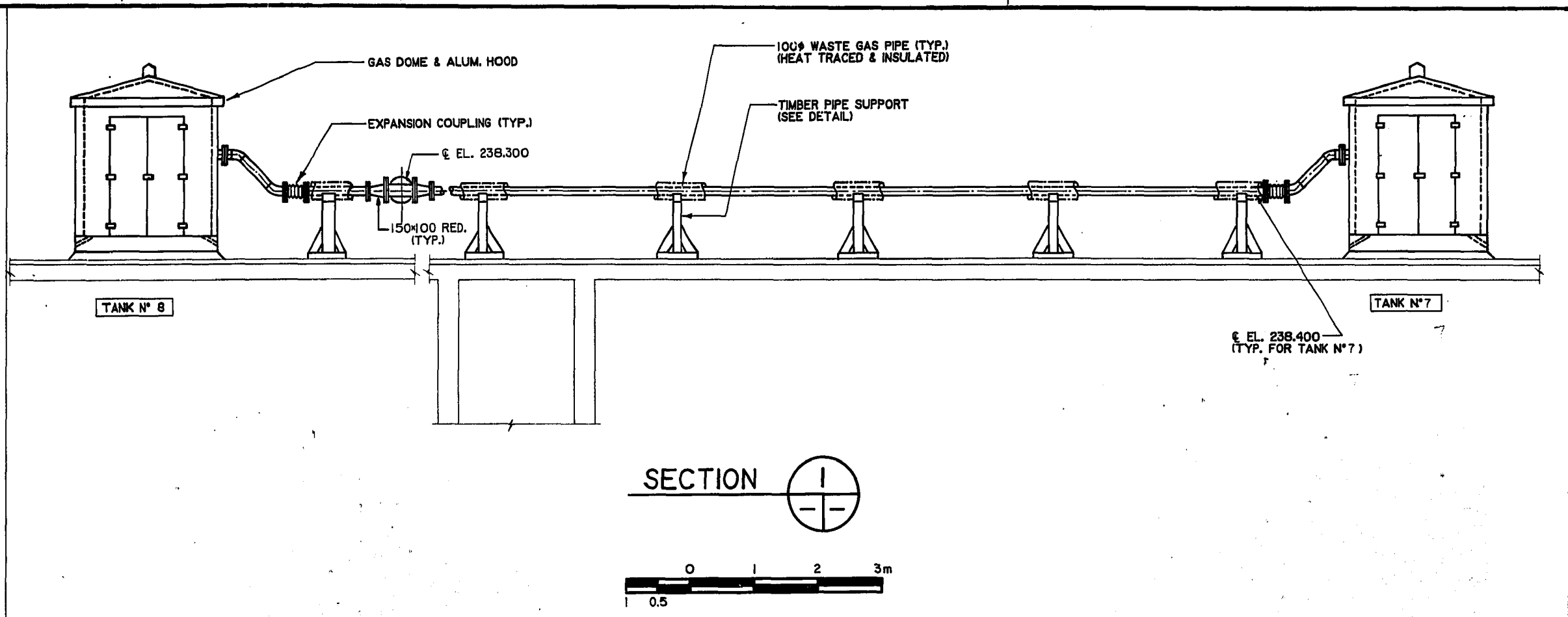
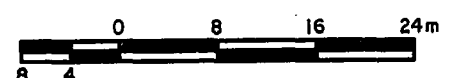
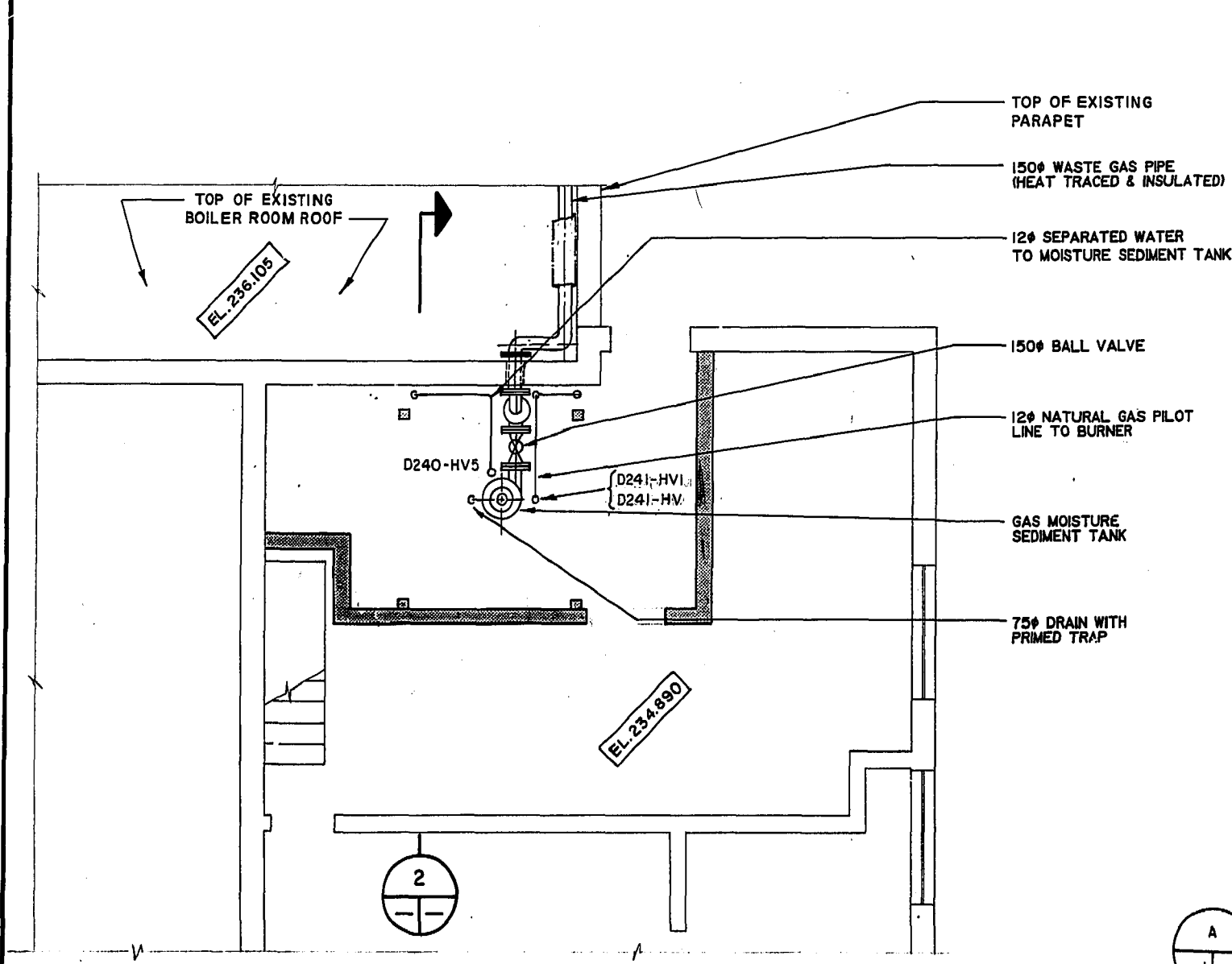


PART SITE PLAN



SECTION 1

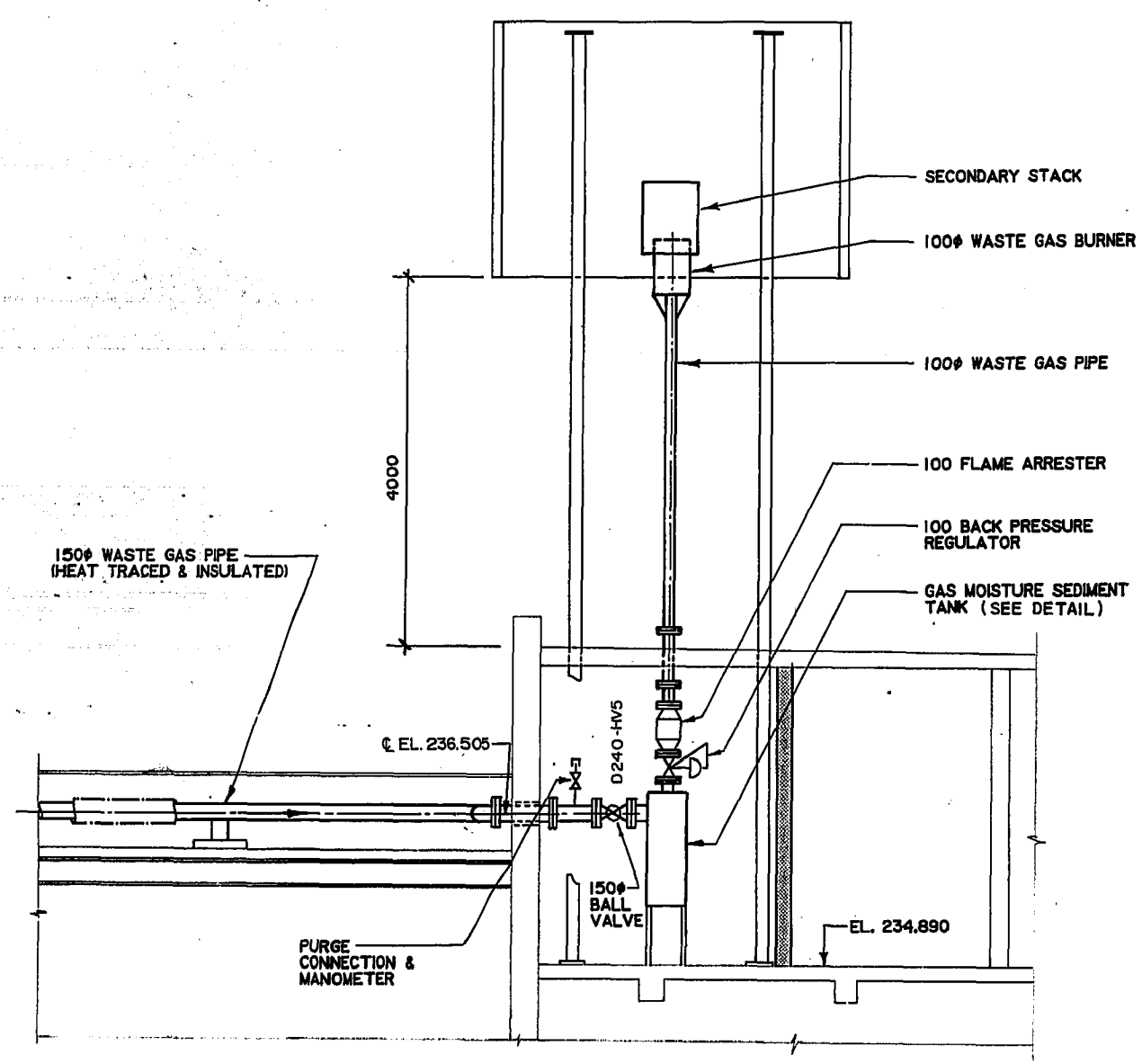


PART PLAN - FILTER BUILDING

DETAIL A



- A DESIGNATION
- B ITEM ORIGIN
- C ITEM LOCATION



SECTION 2



AS CONSTRUCTED
 APPROVED BY: *[Signature]*
 DATE: 1988-03-28

"TO OBTAIN PLANT DATUM SUBTRACT 221.764 METRES"

FOR SHOP DRAWING INFORMATION
 REFER TO THE SHOP DRAWING
 CROSS REFERENCE INDEX

NO.	REVISIONS	DATE	APP.
A	REVISED TO AS CONSTRUCTED		

G. G. POWELL
 REGISTERED PROFESSIONAL ENGINEER
 PROVINCE OF ONTARIO
 A.P.E.M. -112-84(R)
 EXP. DATE: 85-10-15
 ENGINEER'S SEAL

Underwood McLellan Ltd.
 Consulting Engineers and Planners
GORE & STORRIE LIMITED
 CONSULTING ENGINEERS
 DESIGNED BY: J. CHENG
 DRAWN BY: S.N.
 CHECKED BY: J. CHENG
 DATE: JUNE / 85
 APPROVED BY: *[Signature]*
 DATE: JUNE/85

THE CITY OF WINNIPEG
 WORKS & OPERATIONS DIVISION

NORTH END WATER POLLUTION CONTROL CENTRE
 SLUDGE DIGESTION EXPANSION
**TANKS No. 5-8
 PROCESS
 WASTE GAS BURNER**
 RELEASED FOR CONSTRUCTION: *[Signature]* DATE: 17/6/85
 SCALE: AS NOTED
 DRAWING NO: **NEP-1274**