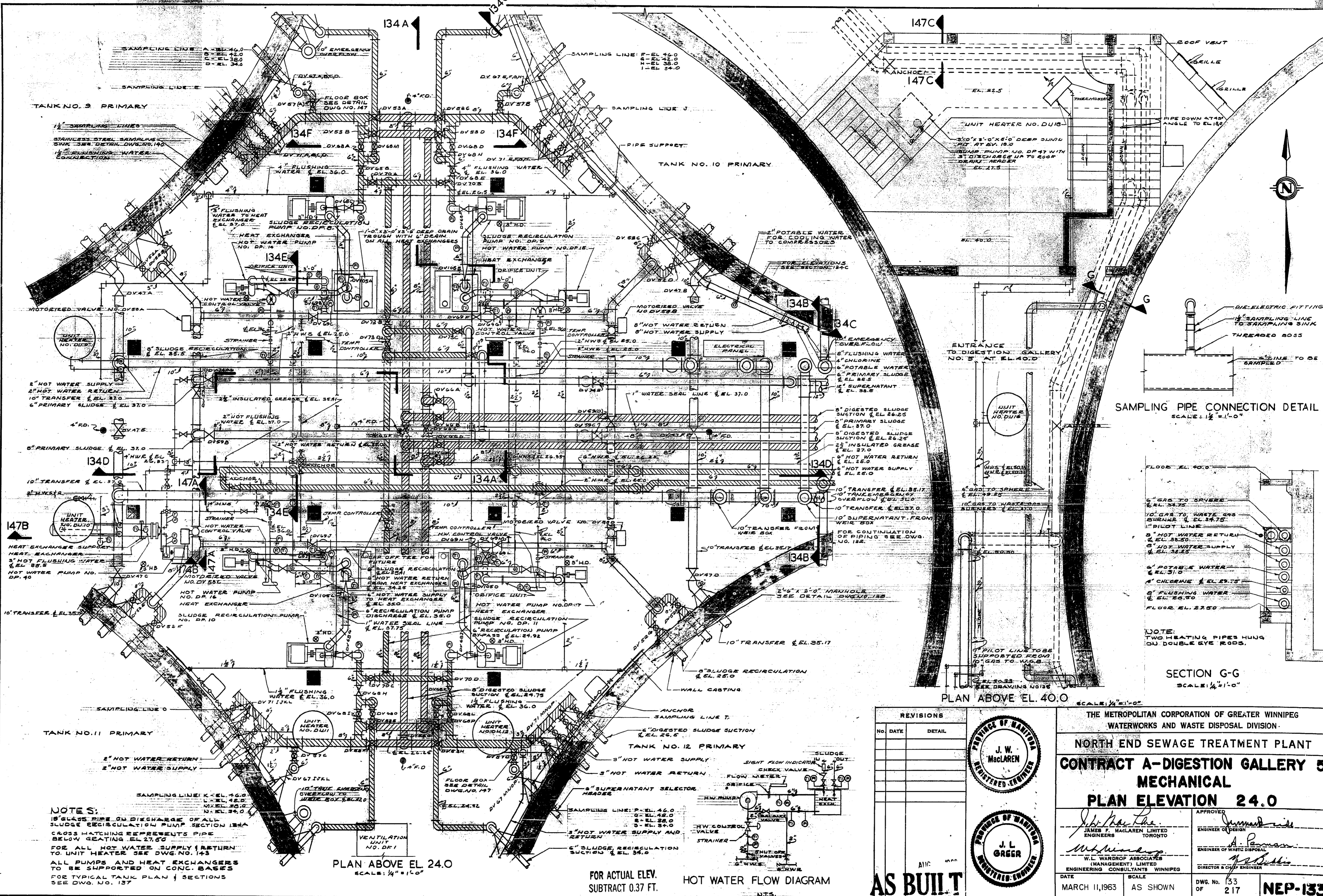


REF. DRAWING No. NEP-133

DETAILS



NOTES:
 1. 18" GLASS PIPE ON DISCHARGE OF ALL SLUDGE RECIRCULATION PUMP SECTION 134A CROSS HATCHING REPRESENTS PIPE BELOW GRATING EL. 27.50
 2. FOR ALL HOT WATER SUPPLY RETURN TO UNIT HEATER SEE DWG. NO. 143
 3. ALL PUMPS AND HEAT EXCHANGERS TO BE SUPPORTED ON CONC. BASES
 4. FOR TYPICAL TANK PLAN & SECTIONS SEE DWG. NO. 137

PLAN ABOVE EL. 24.0
 SCALE: 1/4" = 1'-0"

FOR ACTUAL ELEV.
 SUBTRACT 0.37 FT.

HOT WATER FLOW DIAGRAM

AS BUILT

REVISIONS	
No.	DATE

PROFESSOR OF MANITOBA REGISTERED ENGINEER
J. W. MacLAREN

PROFESSOR OF MANITOBA REGISTERED ENGINEER
J. L. GREER

THE METROPOLITAN CORPORATION OF GREATER WINNIPEG
 WATERWORKS AND WASTE DISPOSAL DIVISION

NORTH END SEWAGE TREATMENT PLANT

CONTRACT A-DIGESTION GALLERY 5

MECHANICAL

PLAN ELEVATION 24.0

APPROVED: *James F. MacLaren*
 JAMES F. MACLAREN LIMITED ENGINEERS TORONTO

APPROVED: *A. J. Penner*
 W. L. WARDROP ASSOCIATES (MANAGEMENT) LIMITED ENGINEERING CONSULTANTS WINNIPEG DIRECTOR & CHIEF ENGINEER

DATE: MARCH 11, 1963
 SCALE: AS SHOWN
 DWG. No. 133 OF 217
NEP-133