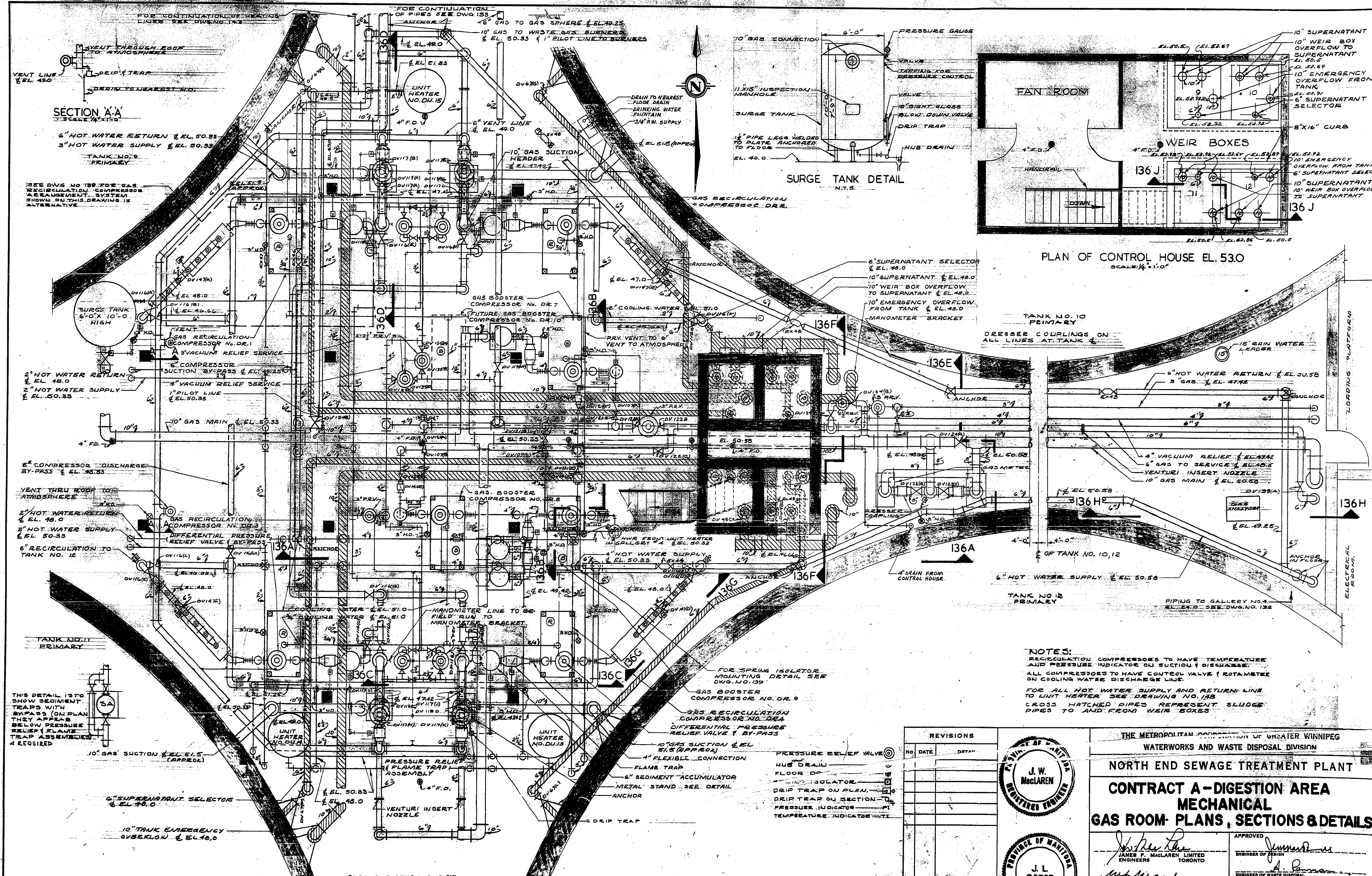


Ref. Drawing No. NEP-135

DETAILS



THIS DETAIL IS TO SHOW SEDIMENT TRAPS WITH BY-PASS (ON PLAN THEY APPEAR BELOW PRESSURE RELIEF FLAME TRAP ASSEMBLY) 4 REQUIRED

SECTION A-A
SCALE 1/2" = 1'-0"

6" HOT WATER RETURN @ EL. 50.33
3" HOT WATER SUPPLY @ EL. 50.33

TANK NO. 9
PRIMARY

SEE DWG. NO. 139 FOR GAS RECIRCULATION COMPRESSOR ARRANGEMENT. SYSTEM SHOWN ON THIS DRAWING IS ALTERNATIVE

6" COMPRESSOR DISCHARGE BY-PASS @ EL. 50.33

VENT THRU ROOF TO ATMOSPHERE

2" HOT WATER RETURN @ EL. 48.0
2" HOT WATER SUPPLY @ EL. 50.33

6" RECIRCULATION TO TANK NO. 12

TANK NO. 11
PRIMARY

10" GAS SUCTION @ EL. 51.5 (APPROX.)

6" SUPERNATANT SELECTOR @ EL. 48.0

12" TANK EMERGENCY OVERFLOW @ EL. 48.0

PLAN OF DIGESTION GALLERY No. 5 EL. 40
SCALE 1/4" = 1'-0"

SURGE TANK DETAIL
N.T.S.

PLAN OF CONTROL HOUSE EL. 53.0
SCALE 1/4" = 1'-0"

NOTES:

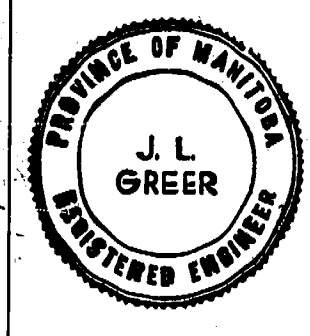
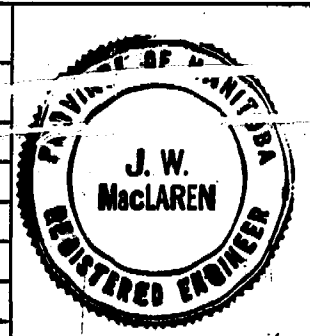
RECIRCULATION COMPRESSORS TO HAVE TEMPERATURE AND PRESSURE INDICATOR ON SUCTION & DISCHARGE.

ALL COMPRESSORS TO HAVE CONTROL VALVE & ROTAMETER ON COOLING WATER DISCHARGE LINE.

FOR ALL HOT WATER SUPPLY AND RETURN LINE TO UNIT HEATER SEE DRAWING NO. 133

CROSS HATCHED PIPES REPRESENT SLOUGE PIPES TO AND FROM WEIR BOXES

REVISIONS		
NO.	DATE	DETAIL



FOR ACTUAL ELEV. SUBTRACT 0.37 FT. **AS BUILT**

AUG. 1966

THE METROPOLITAN CORPORATION OF GREATER WINNIPEG
WATERWORKS AND WASTE DISPOSAL DIVISION

NORTH END SEWAGE TREATMENT PLANT

CONTRACT A-DIGESTION AREA
MECHANICAL
GAS ROOM- PLANS, SECTIONS & DETAILS

APPROVED <i>James F. MacLaren</i> JAMES F. MACLAREN LIMITED ENGINEERS TORONTO	ENGINEER OF DESIGN
<i>W.L. Wardrop</i> W.L. WARDROP ASSOCIATES (MANAGEMENT) LIMITED ENGINEERING CONSULTANTS WINNIPEG	ENGINEER OF WASTE DISPOSAL
DATE MARCH 11, 1963	DIRECTOR & CHIEF ENGINEER
SCALE AS SHOWN	DWG. No. 165 OF 217
	NEP-135