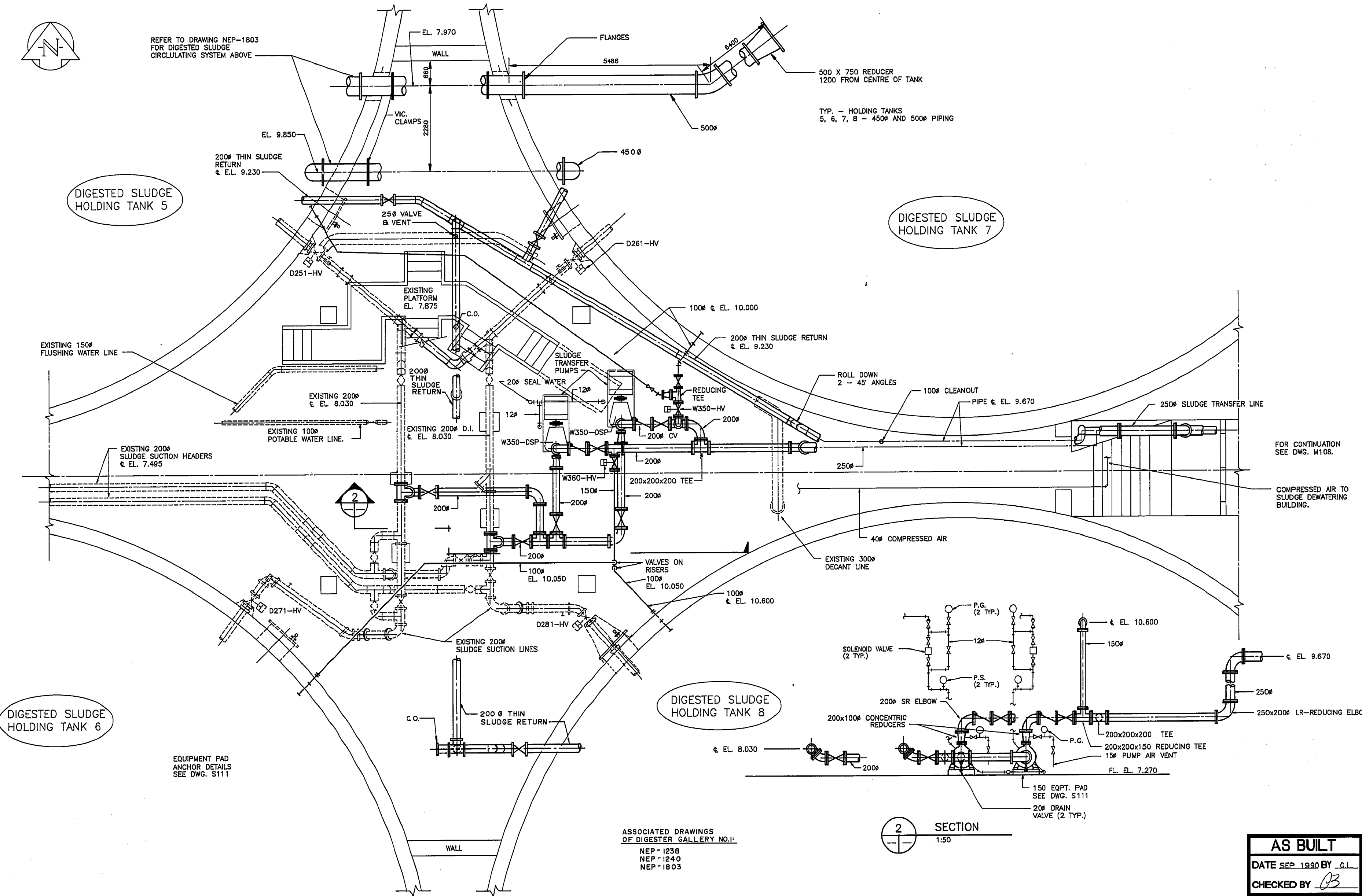


REFER TO DRAWING NEP-1803  
FOR DIGESTED SLUDGE  
CIRCULATING SYSTEM ABOVE

DIGESTED SLUDGE  
HOLDING TANK 5

DIGESTED SLUDGE  
HOLDING TANK 7



FOR CONTINUATION  
SEE DWG. M108.

COMPRESSED AIR TO  
SLUDGE DEWATERING  
BUILDING.

DIGESTED SLUDGE  
HOLDING TANK 8

DIGESTED SLUDGE  
HOLDING TANK 6

EQUIPMENT PAD  
ANCHOR DETAILS  
SEE DWG. S111

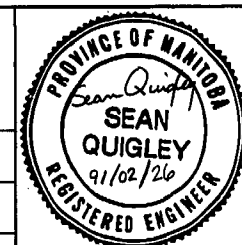
ASSOCIATED DRAWINGS  
OF DIGESTER GALLERY NO.1:  
NEP - 1238  
NEP - 1240  
NEP - 1803

2 SECTION  
1:50

**AS BUILT**  
DATE SEP 1988 BY G.L.  
CHECKED BY *OB*

1 FLOOR PLAN  
1:50 FIN. FLR. ELEV. 7.270

<b>Wardrop-MacLaren</b> ENGINEERING CONSULTANTS			<b>THE CITY OF WINNIPEG</b> WORKS AND OPERATIONS DIVISION WATERWORKS, WASTE & DISPOSAL DEPARTMENT	
DESIGNED BY	S.Q. & G.G.		CHECKED BY	R.E.D.
DRAWN BY	T.F.	APPROVED BY	<i>M. Maguire</i>	CITY DRAWING NUMBER
HOR. SCALE:		RELEASED FOR CONSTRUCTION:		SHEET OF
VERTICAL:	1:50	DATE	OCTOBER 1988	NEP-1638
1 AS BUILT	09/90 G.L.			
NO. REVISIONS	DATE BY			



**THE CITY OF WINNIPEG**  
WORKS AND OPERATIONS DIVISION  
WATERWORKS, WASTE & DISPOSAL DEPARTMENT

NORTH END WATER POLLUTION CONTROL CENTRE  
SLUDGE DEWATERING FACILITY - MECHANICAL  
DIGESTED SLUDGE HOLDING  
TANKS AND TRANSFER PUMPS

CITY DRAWING NUMBER

SHEET OF

NEP-1638

CONSULTANT DRAWING NO.  
850012-09-10-M107