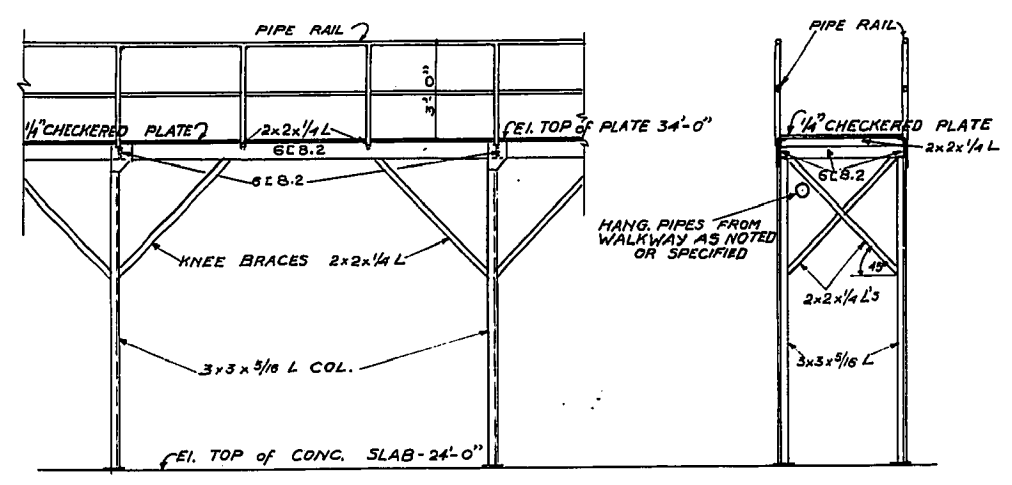
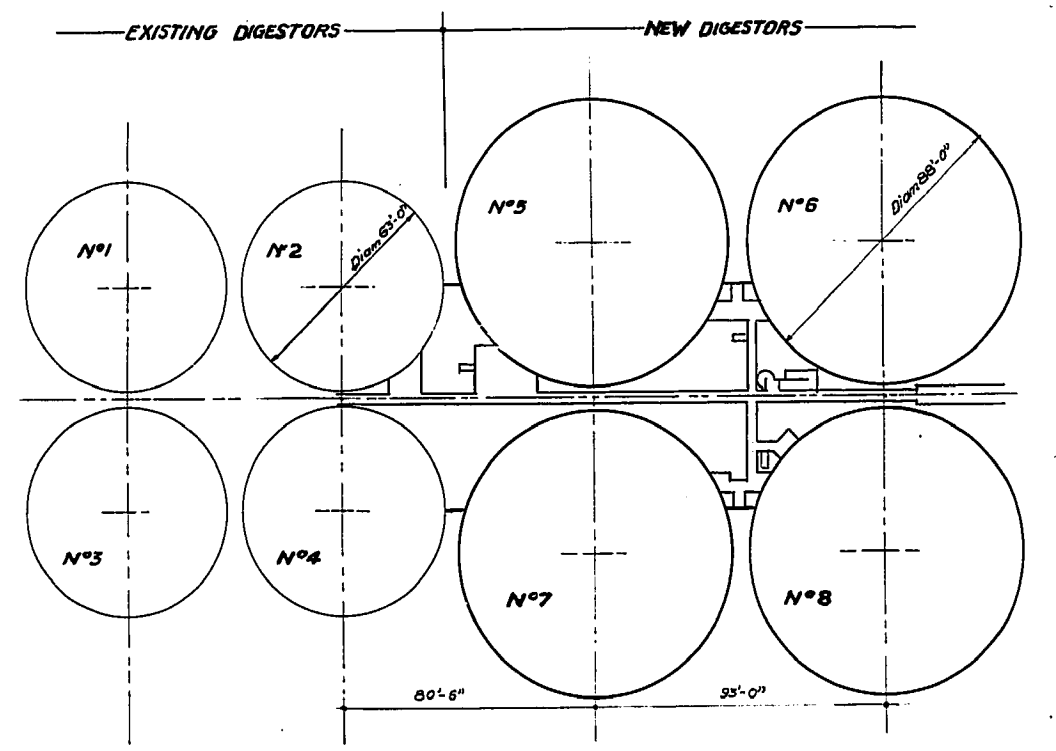
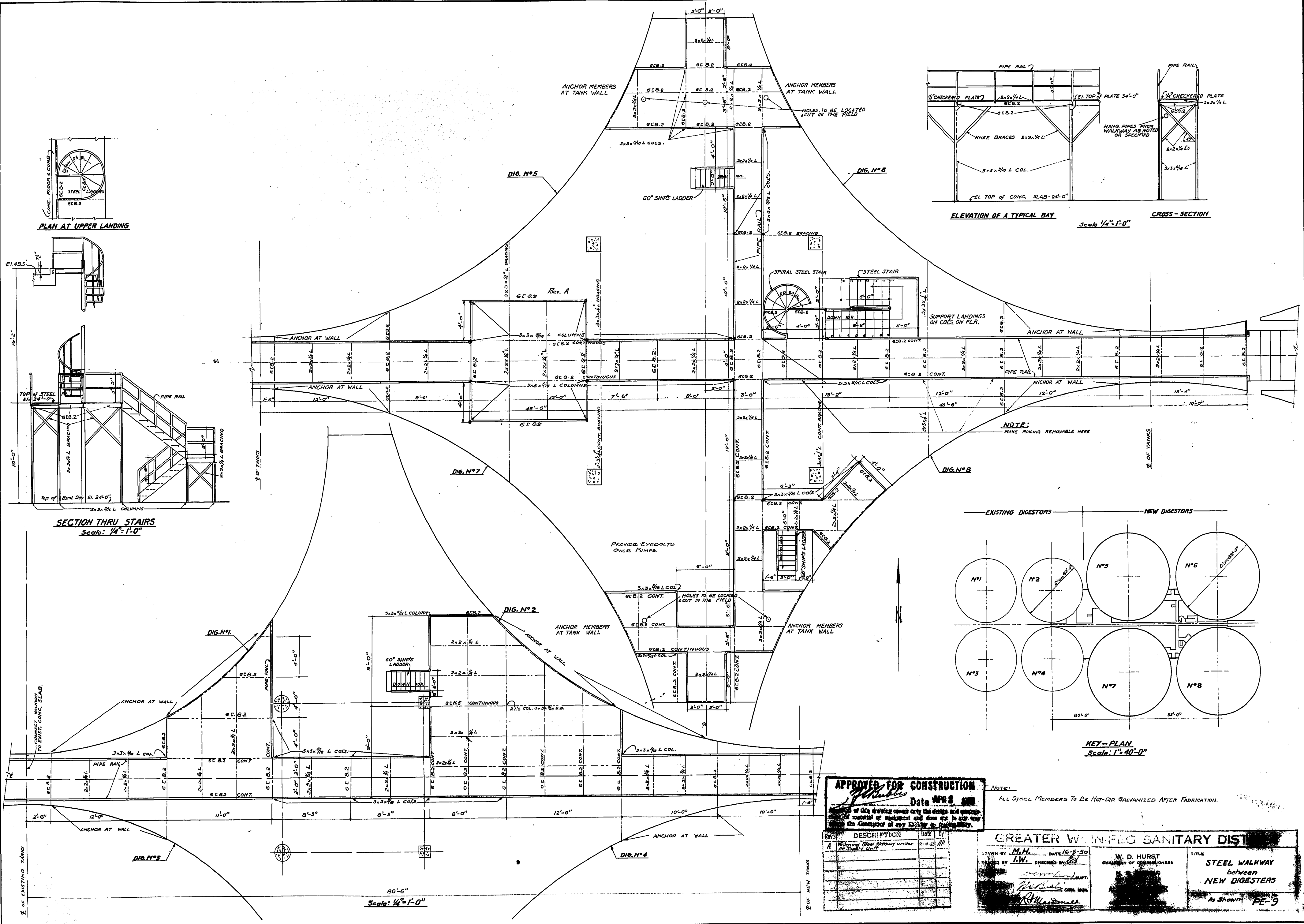


**SECTION THRU STAIRS**  
Scale: 1/4"=1'-0"



**ELEVATION OF A TYPICAL BAY** Scale 1/4"=1'-0" **CROSS-SECTION**



**KEY - PLAN**  
Scale: 1"=40'-0"

**APPROVED FOR CONSTRUCTION**  
Date APR 2 1950

REV.	DESCRIPTION	DATE	BY
A	Revised Steel Walkway under No. 1 Digester Unit	2-4-50	AP

NOTE: ALL STEEL MEMBERS TO BE HOT-DIP GALVANIZED AFTER FABRICATION.

**GREATER WAINWIG SANITARY DIST.**

W. D. HURST  
CHAIRMAN OF COMMISSIONERS

STEEL WALKWAY  
between  
NEW DIGESTERS

As Shown FE-9