

ELECTRICAL SYMBOL LEGEND

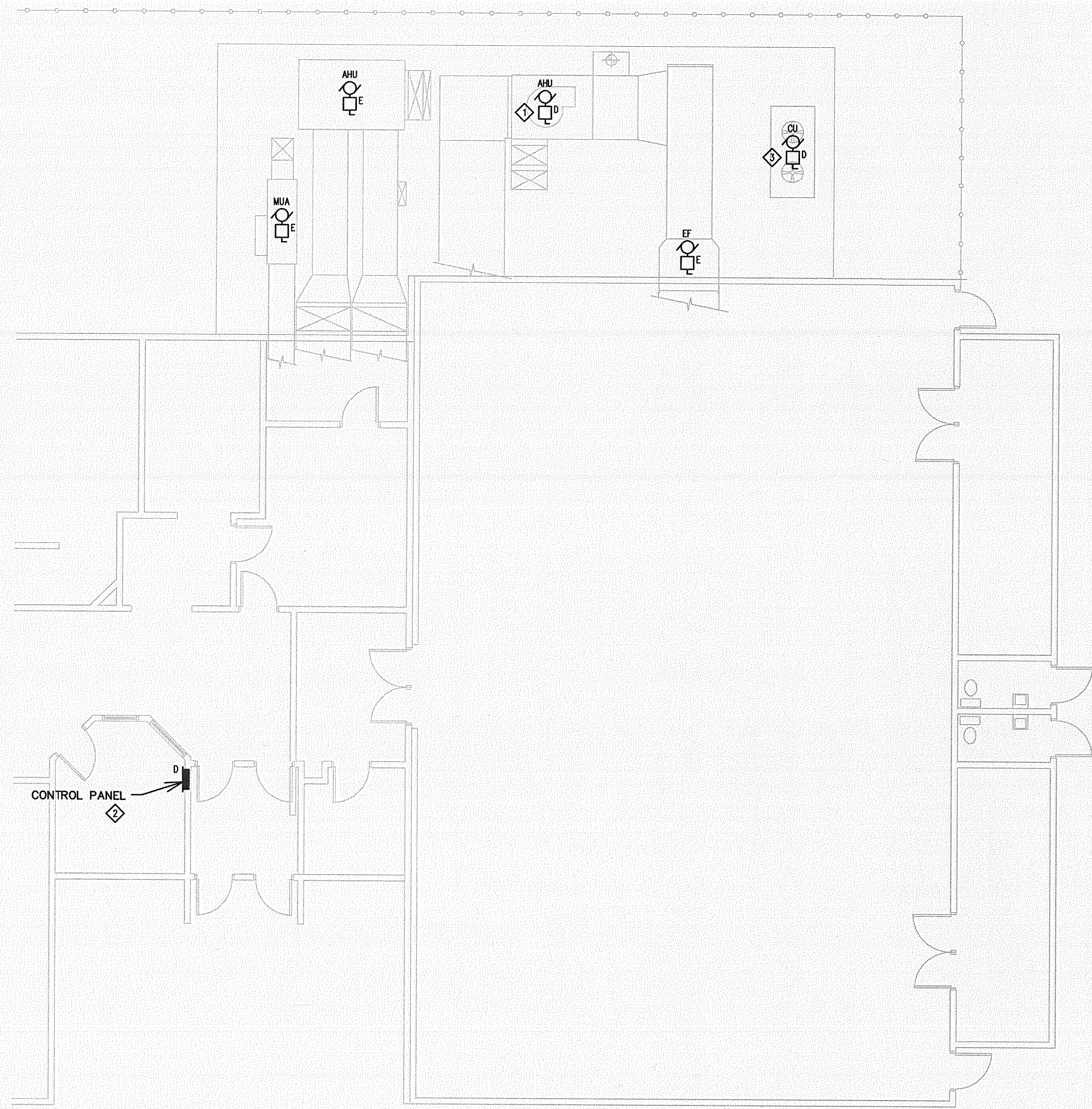
- ⊗ DIRECT CONNECTION - 120 OR 208V AS SPECIFIED
- ⊙ MOTOR CONNECTION AS SPECIFIED
- ⊙-□ MOTOR CONNECTION C/W UNFUSED DISCONNECT SWITCH
- UNFUSED DISCONNECT SWITCH

ABBREVIATIONS

- D - DELETE
- E - EXISTING
- R - RELOCATE(D)
- WP - WEATHERPROOF

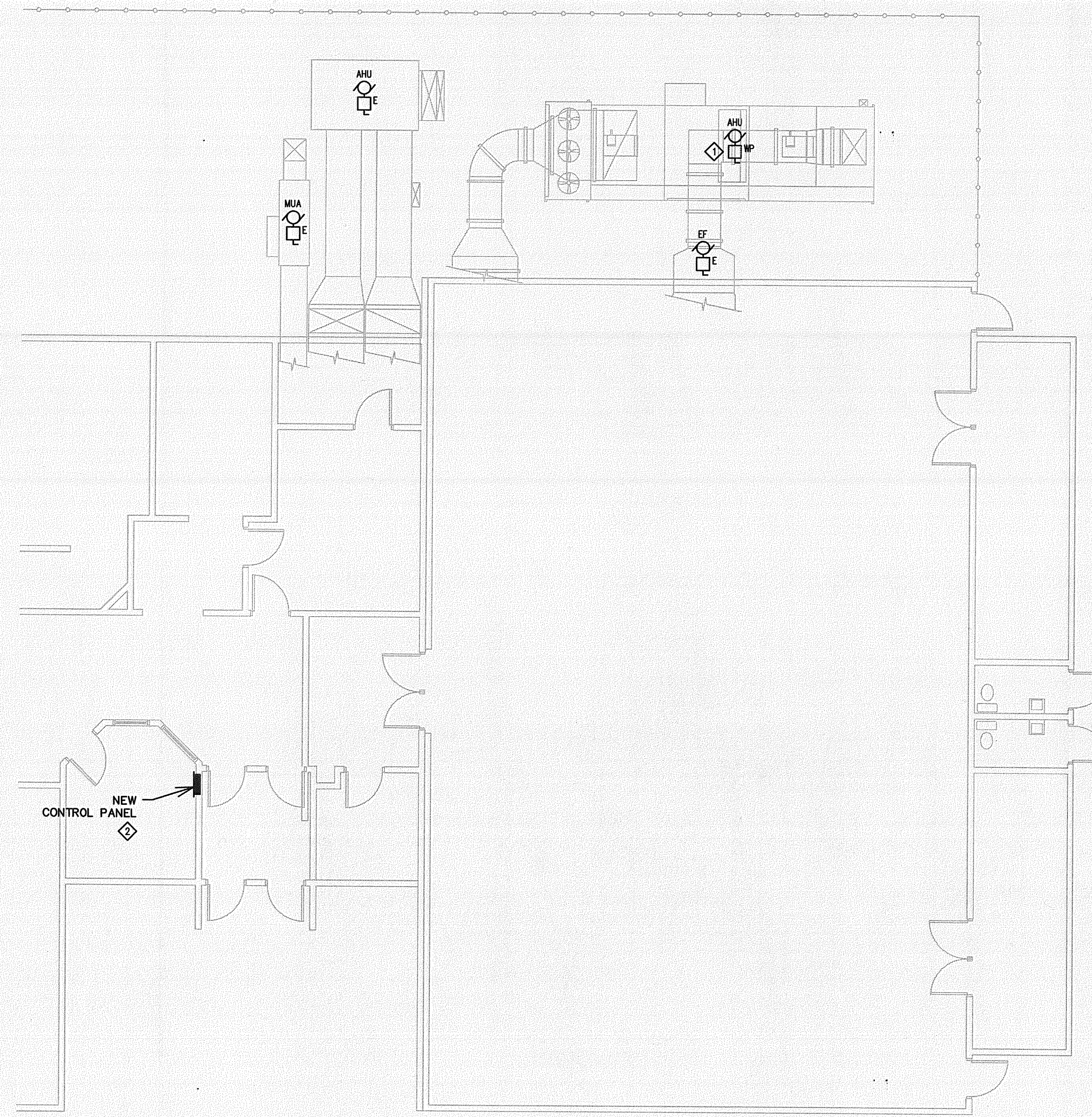
ELECTRICAL DRAWING LIST

E2.0 MAIN FLOOR PART PLANS - ELECTRICAL LAYOUTS



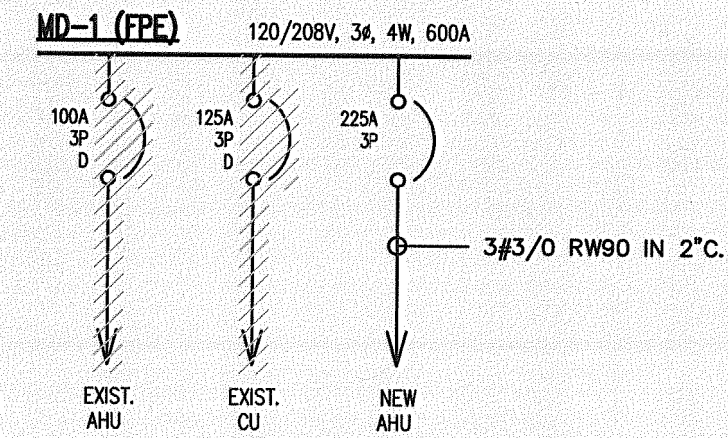
1 MAIN FLOOR PART PLAN - ELECTRICAL DEMOLITION
E2.0 SCALE: 1/8" = 1'-0"

- NOTES:**
- DISCONNECT EXISTING AHU AND REMOVE ASSOCIATED WIRING AND CONDUIT TO SOURCE. EXISTING BREAKER SHALL BE TAGGED SPARE.
 - DISCONNECT AND REMOVE EXISTING CONTROL PANEL.
 - DISCONNECT EXISTING CU AND REMOVE ASSOCIATED WIRING AND CONDUIT TO SOURCE. EXISTING BREAKER SHALL BE TAGGED SPARE.

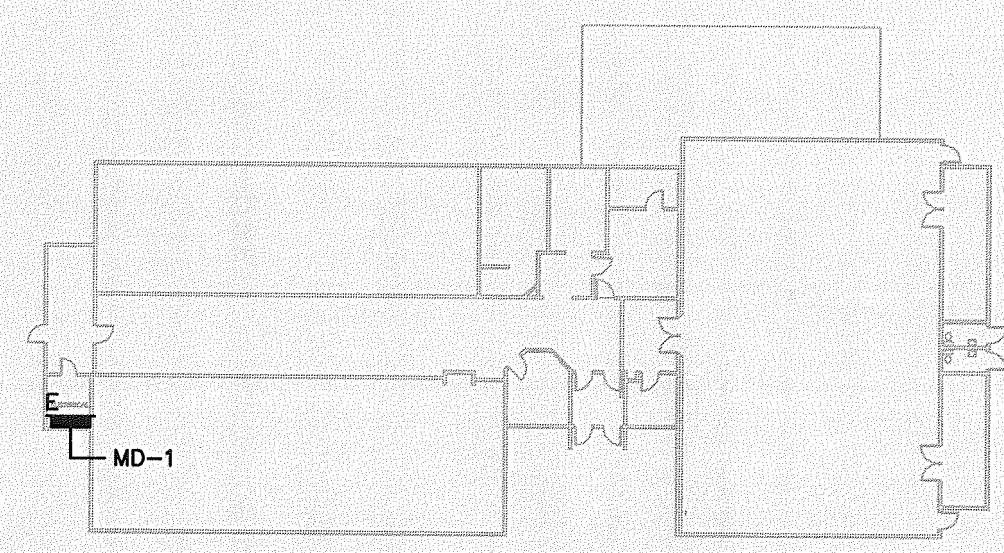


2 MAIN FLOOR PART PLAN - ELECTRICAL NEW WORK
E2.0 SCALE: 1/8" = 1'-0"

- NOTES:**
- WIRE AND CONNECT NEW AHU AS PER DETAIL 3/E2.0.
 - WIRE AND CONNECT 120V CONTROL CIRCUIT.



3 SINGLE LINE DIAGRAM
E2.0 SCALE: NTS



4 KEY PLAN
E2.0 SCALE: NTS

MCW / AGE
Consulting Professional Engineers
210 3571 Wellington Avenue
Winnipeg, Manitoba, R2W 0G4
Phone: (204) 779-7900 Fax: (204) 779-1119
E-Mail: mcw_age@mcw.com

TPR MECHANICAL CONSULTANTS LTD.
191-1558 ST. JAMES STREET R3H 1S8
78-522-6598 Fax: 623-9286
unies Ltd. Consulting Engineers

1 NO.	ISSUED FOR TENDER REVISION/DESCRIPTION	10/12 BY DATE



DRAWN BY: KP CHECKED BY: BG APPROVED BY: BG
DATE: OCT 12/10 USER APPROVAL

THE CITY OF WINNIPEG
MUNICIPAL ACCOMMODATION DIVISION
4TH FLOOR-185 KING ST. R3B 1J1
PROJECT
BID OPPORTUNITY 754-2010

APEGM
Certificate of Authorization
MCW/AGE Consulting
Professional Engineers
No. 589 Expiry: April 30, 2011

SHEET TITLE
EXISTING DEMO & NEW WORK
MAIN FLOOR PART PLANS -
ELECTRICAL LAYOUTS
SCALE AS NOTED PROJECT NO. - SHEET NO. E2.0