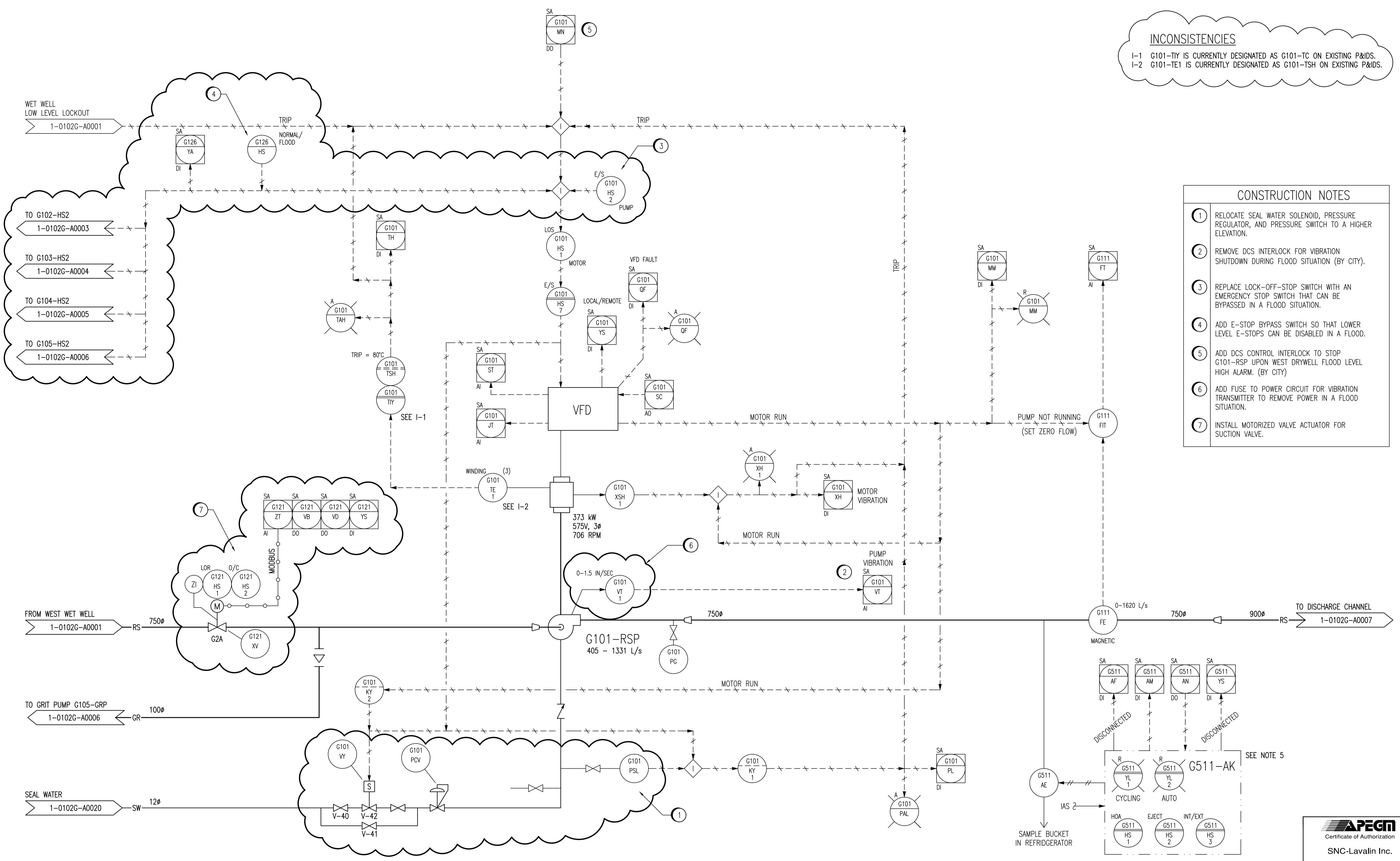


INCONSISTENCIES

I-1 G101-TY IS CURRENTLY DESIGNATED AS G101-TC ON EXISTING P&IDS.
I-2 G101-TE1 IS CURRENTLY DESIGNATED AS G101-TSH ON EXISTING P&IDS.



- CONSTRUCTION NOTES**
- RELOCATE SEAL WATER SOLENOID, PRESSURE REGULATOR, AND PRESSURE SWITCH TO A HIGHER ELEVATION.
 - REMOVE DCS INTERLOCK FOR VIBRATION SHUTDOWN DURING FLOOD SITUATION (BY CITY).
 - REPLACE LOCK-OFF-STOP SWITCH WITH AN EMERGENCY STOP SWITCH THAT CAN BE BYPASSED IN A FLOOD SITUATION.
 - ADD E-STOP BYPASS SWITCH SO THAT LOWER LEVEL E-STOPS CAN BE DISABLED IN A FLOOD.
 - ADD DCS CONTROL INTERLOCK TO STOP G101-RSP UPON WEST DRYWELL FLOOD LEVEL HIGH ALARM. (BY CITY)
 - ADD FUSE TO POWER CIRCUIT FOR VIBRATION TRANSMITTER TO REMOVE POWER IN A FLOOD SITUATION.
 - INSTALL MOTORIZED VALVE ACTUATOR FOR SUCTION VALVE.

- NOTES:**
- THIS DRAWING SUPERSEDES PART OF DRAWING SEP-863.
 - ALL INSTRUMENTS SHOWN IN AN AUXILIARY LOCATION ARE LOCATED IN THE CORRESPONDING VFD CONTROL PANEL.
 - ALL INSTRUMENTS ON THIS DRAWING BEGINNING WITH FUNCTIONAL IDENTIFICATION LETTER 'X' ARE ASSOCIATED WITH VIBRATION.
 - THE PUMP VIBRATION PILOT LIGHT ON FDP-G IS CURRENTLY LABELLED "NOT IN USE".
 - G511-AE ONLY COLLECTS SAMPLES WHEN G101-RSP IS RUNNING.

1-0102A-D-A0001	PROCESS & INSTRUMENT DIAGRAMS LEGEND & DETAILS
DRAWING NUMBER	REFERENCE DRAWINGS

NO.	REVISIONS	DATE	DESIGN	CHECK
02	ADDED SUCTION VALVE ACTUATOR & FLOOD MODE	2010/10/01	TMC	CJR
01	DELETED NORMAL EMERGENCY SELECTOR SWITCH	2009/12/07	NB	CJR
00	ISSUED FOR CITY USE	2006/11/28	-	EFB

		SNC-LAVALIN INC. 148 Nature Park Way Winnipeg, MB, Canada R3P 0X7 204-786-8080	ENGINEER'S SEAL ORIGINAL DRAWING SEALED BY: T. CHURCH SNC-LAVALIN INC. 2010/10/01 REV. 02 CHANGES ONLY
DESIGNED BY: EXISTING DRAWN BY: DAH SCALE: NTS DATE: 2005/10/25 CONSULTANT NO.: 112577-0112-49DD-0002	CHECKED BY: EFB APPROVED BY: CJR RELEASED FOR CONSTRUCTION BY: DATE:	CITY DRAWING NUMBER: 1-0102G-A0002 SHEET: 001 REV: 02 SIZE: A1	

Certificate of Authorization
SNC-Lavalin Inc.
 No. 4489

THE CITY OF WINNIPEG
 WATER AND WASTE DEPARTMENT

SOUTH END WATER POLLUTION CONTROL CENTRE
 PUMP & SCREEN BUILDING
 PROCESS & INSTRUMENTATION DIAGRAM
 RAW SEWAGE PUMP G101-RSP