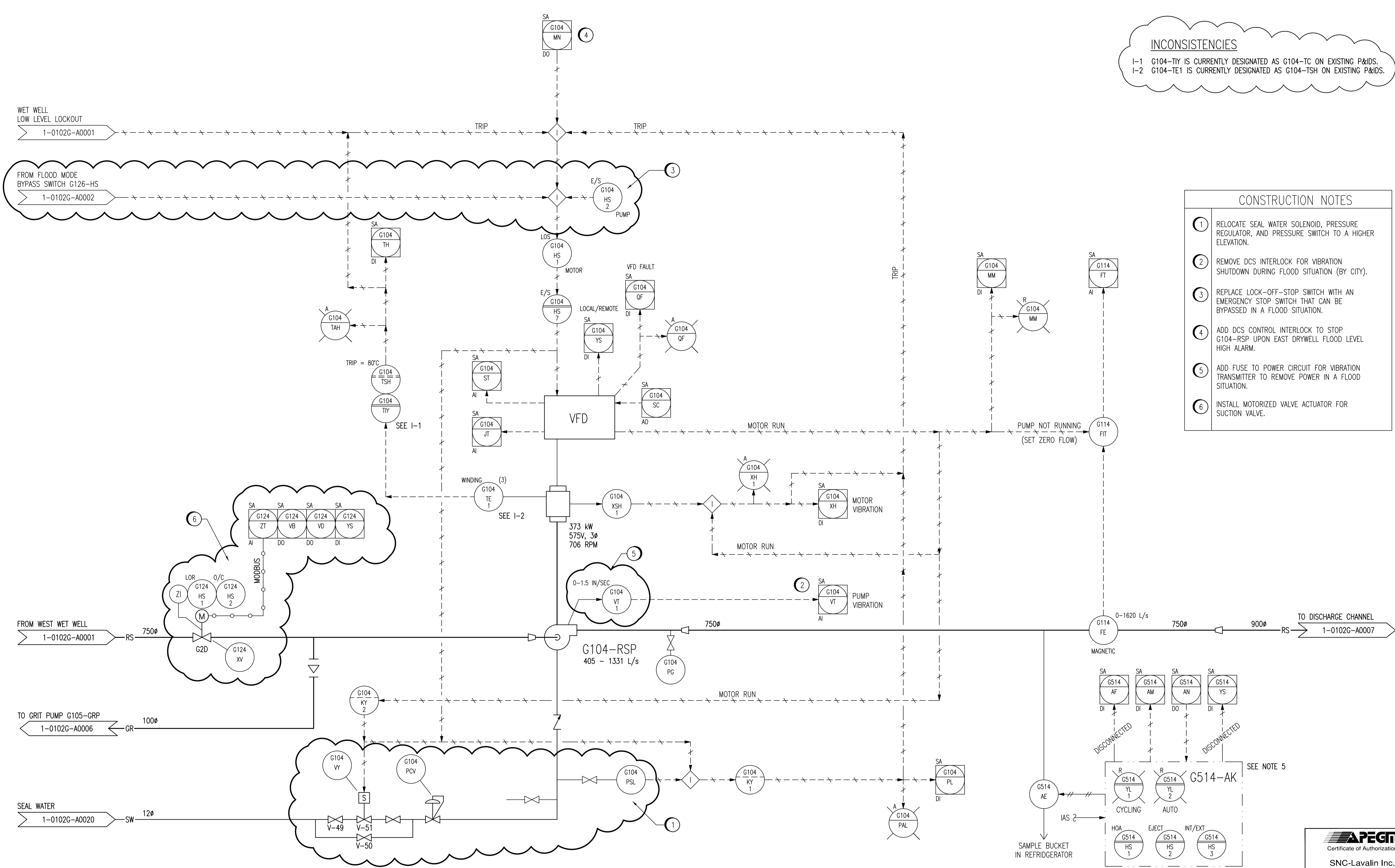


**INCONSISTENCIES**  
 I-1 G104-TY IS CURRENTLY DESIGNATED AS G104-TC ON EXISTING P&IDS.  
 I-2 G104-TE1 IS CURRENTLY DESIGNATED AS G104-TSH ON EXISTING P&IDS.



- CONSTRUCTION NOTES**
- 1 RELOCATE SEAL WATER SOLENOID, PRESSURE REGULATOR, AND PRESSURE SWITCH TO A HIGHER ELEVATION.
  - 2 REMOVE DCS INTERLOCK FOR VIBRATION SHUTDOWN DURING FLOOD SITUATION (BY CITY).
  - 3 REPLACE LOCK-OFF-STOP SWITCH WITH AN EMERGENCY STOP SWITCH THAT CAN BE BYPASSED IN A FLOOD SITUATION.
  - 4 ADD DCS CONTROL INTERLOCK TO STOP G104-RSP UPON EAST DRYWELL FLOOD LEVEL HIGH ALARM.
  - 5 ADD FUSE TO POWER CIRCUIT FOR VIBRATION TRANSMITTER TO REMOVE POWER IN A FLOOD SITUATION.
  - 6 INSTALL MOTORIZED VALVE ACTUATOR FOR SUCTION VALVE.

- NOTES:**
1. THIS DRAWING SUPERSEDES PART OF DRAWING SEP-863.
  2. ALL INSTRUMENTS SHOWN IN AN AUXILIARY LOCATION ARE LOCATED IN THE CORRESPONDING VFD PANEL.
  3. ALL INSTRUMENTS ON THIS DRAWING BEGINNING WITH FUNCTIONAL IDENTIFICATION LETTER 'X' ARE ASSOCIATED WITH VIBRATION.
  4. THE PUMP VIBRATION PILOT LIGHT ON FDP-G IS CURRENTLY LABELLED "NOT IN USE".
  5. G514-AE ONLY COLLECTS SAMPLES WHEN G104-RSP IS RUNNING.

1-0102A-D-A0001	PROCESS & INSTRUMENT DIAGRAMS LEGEND & DETAILS
DRAWING NUMBER	REFERENCE DRAWINGS

NO.	REVISIONS	DATE	DESIGN	CHECK
02	ADDED SUCTION VALVE ACTUATOR & FLOOD MODE	2010/10/01	TMC	CJR
01	DELETED NORMAL EMERGENCY SELECTOR SWITCH	2009/12/07	NB	CJR
00	ISSUED FOR CITY USE	2006/11/28	-	EFB

SNC-LAVALIN INC. 148 Nature Park Way Winnipeg, MB, Canada R3P 0X7 204-786-8080	
DESIGNED BY: EXISTING	CHECKED BY: EFB
DRAWN BY: DAH	APPROVED BY: CJR
SCALE: NTS	RELEASED FOR CONSTRUCTION BY: DATE:
DATE: 2005/11/24	DATE:
CONSULTANT NO.: 112577-0112-49DD-0005	

ENGINEER'S SEAL

ORIGINAL DRAWING SEALED BY: T. CHURCH  
 SNC-Lavalin Inc. 2010/10/01  
 REV. 02  
 CHANGES ONLY

THE CITY OF WINNIPEG  
 WATER AND WASTE DEPARTMENT

SOUTH END WATER POLLUTION CONTROL CENTRE  
 PUMP & SCREEN BUILDING  
 PROCESS & INSTRUMENTATION DIAGRAM  
 RAW SEWAGE PUMP G104-RSP

CITY DRAWING NUMBER	SHEET	REV.	SIZE
1-0102G-A0005	001	02	A1

1-0102G-A0005-001-02.dwg

