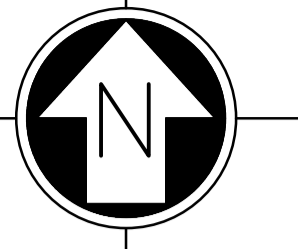
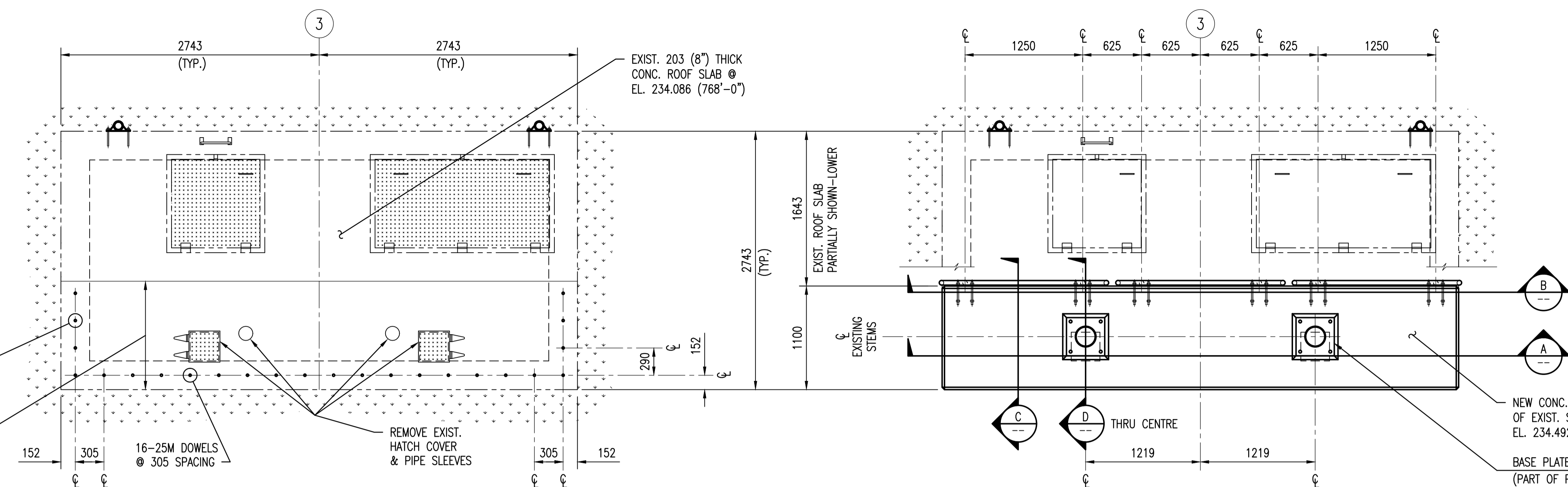


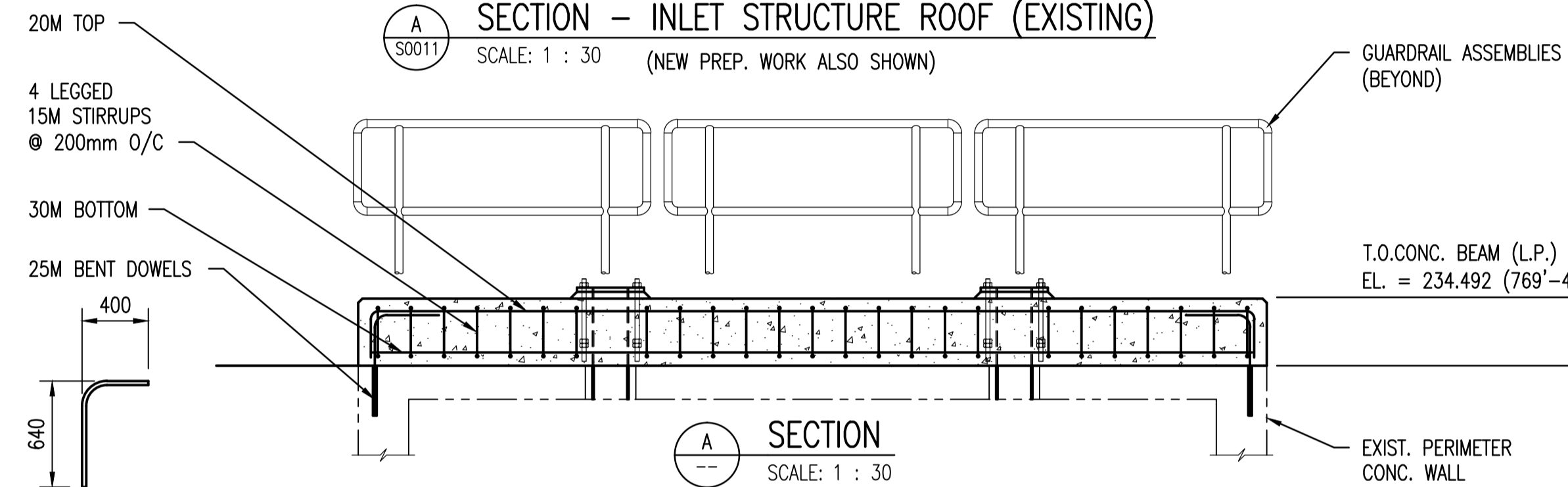
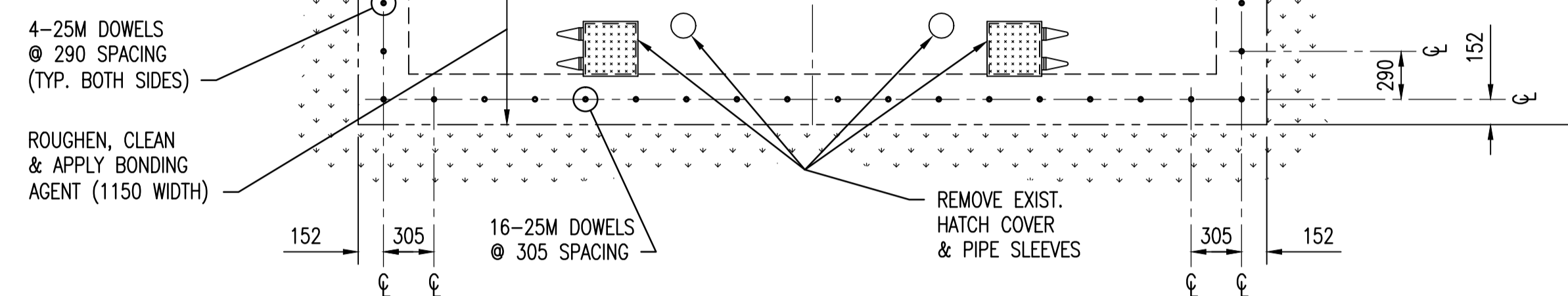
AS SIZE - 594mm x 841mm



-ALL PLANS-

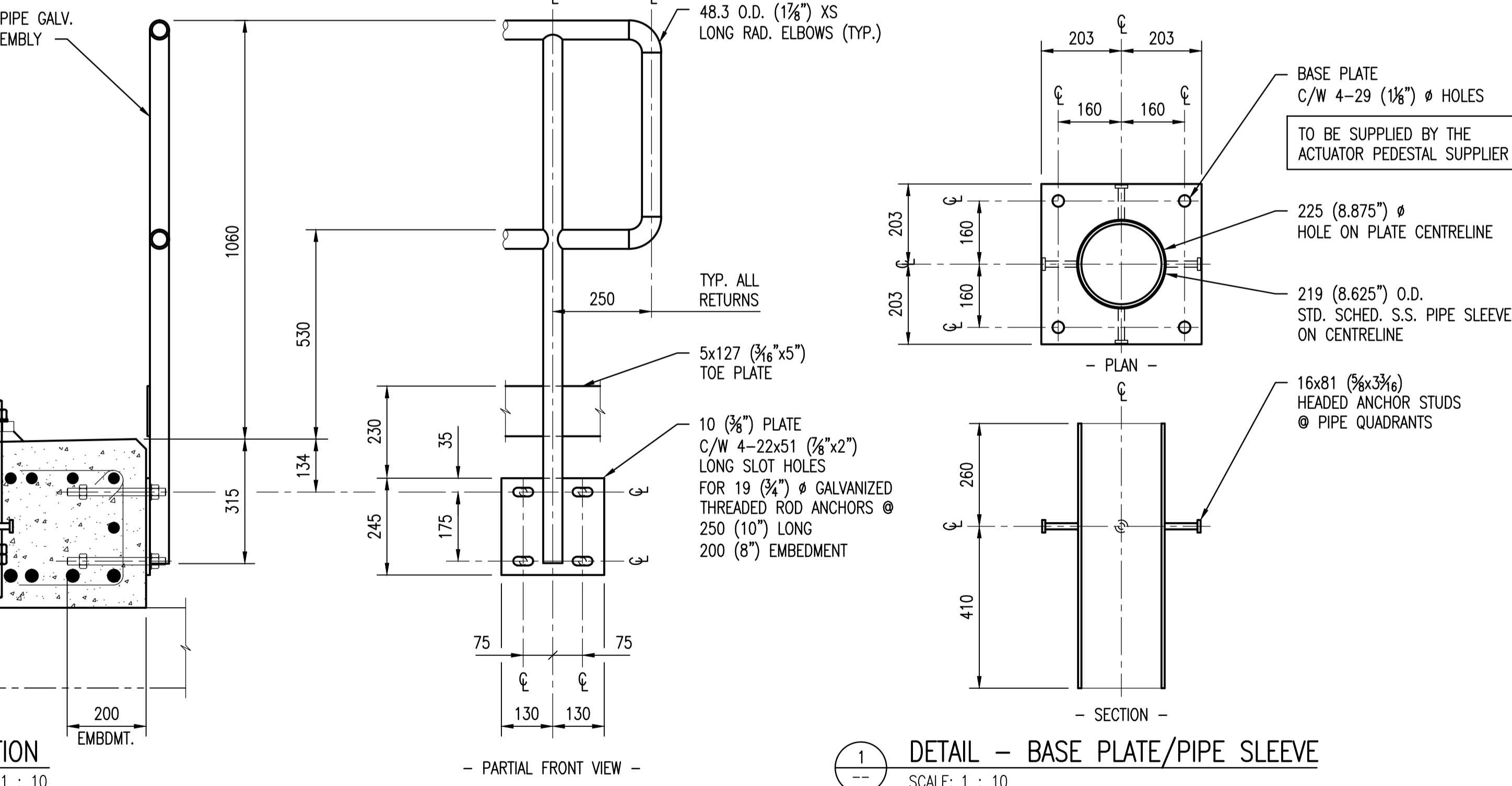
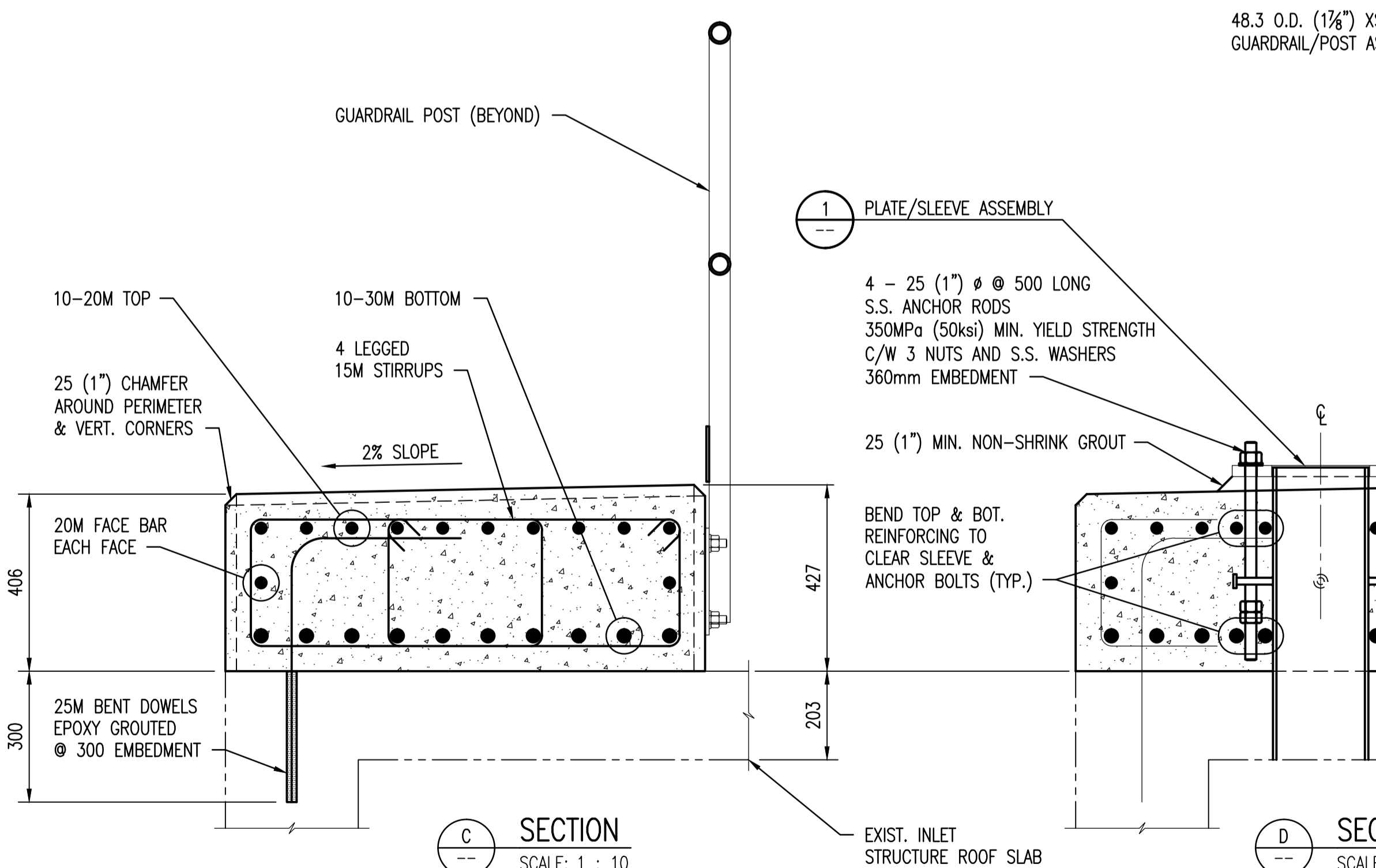
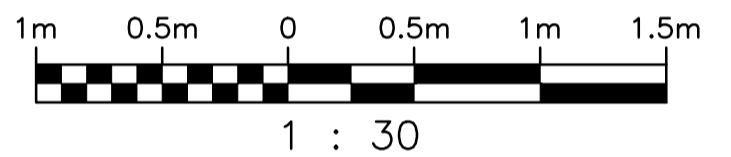


- NOTES:**
- SEE DRAWING 1-0102G-S0010 & 1-0102G-S0011 FOR GENERAL NOTES.
 - CONTRACTOR TO LOCATE CENTERLINE OF PIPE SLEEVES ON THE CENTERLINE OF EXISTING STEMS.
 - IF REQUIRED - MAKE A SMOOTH CUT IN THE EXISTING SLAB FOR PROPER LOCATIONS OF S.S. PIPE SLEEVES.
 - COORDINATE WITH EQUIPMENT SUPPLIER FOR THE LOCATION OF ANCHOR BOLTS FOR ACTUATOR PEDESTALS.



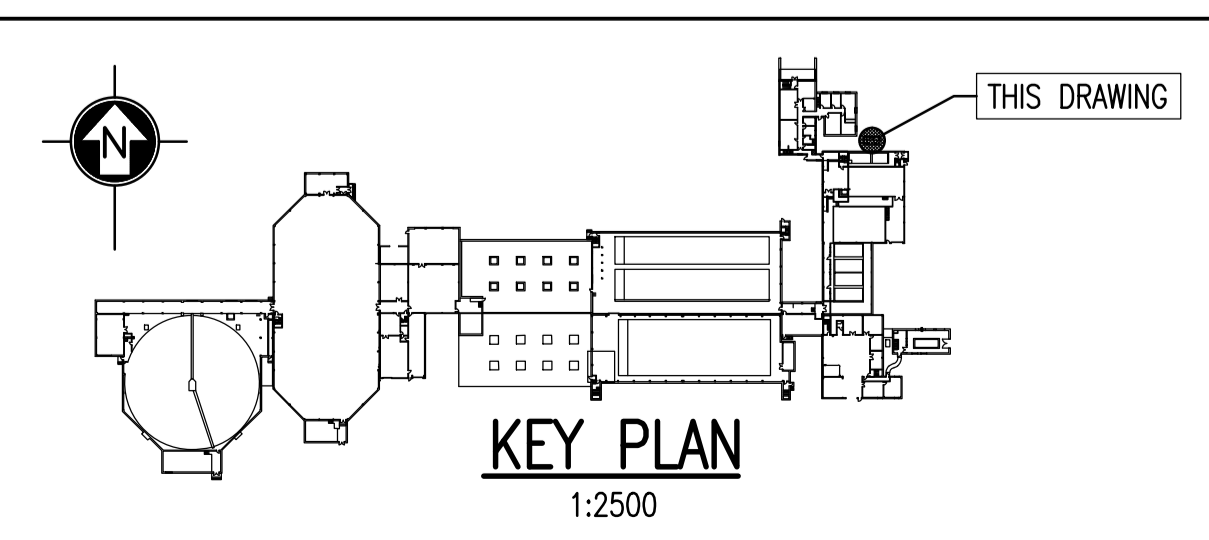
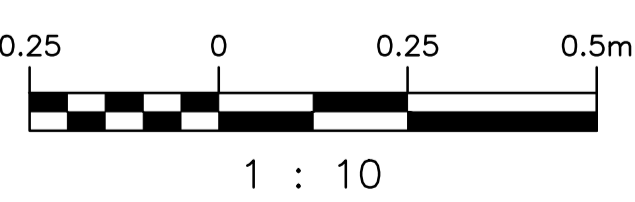
DESIGN LOAD ASSUMPTIONS FOR EACH ACTUATOR:

MAXIMUM DOWNWARD THRUST	= 240kN
MAXIMUM UPWARD THRUST	= 133kN
MAXIMUM HORIZONTAL THRUST	= 24kN



LAST SAVE: 2010/10/01 - 1:41pm
 PATH: M:\112577\0112\4ENG\425STR.DD - General DWG\1-0102G-S0012-002-00.DWG

DRAWING NUMBER	REFERENCE DRAWINGS
SEP-35	PUMP & SCREEN BLDG. STRUCTURAL CAST-IN-SITU ALT. SECTION
SEP-34	PUMP & SCREEN BLDG. STRUCTURAL CAST-IN-SITU ALTERNATIVE PLANS
SEP-29	PUMP & SCREEN BLDG. STRUCTURAL INTAKE STRUCTURAL DETAILS
SEP-21	PUMP & SCREEN BLDG. ARCH. FLOOR PLANS ELEV. 774', 782', 796'
SEP-20	PUMP & SCREEN BLDG. ARCH. FLOOR PLAN ELEV. 764' BLDG. ELEV'S.
SEP-19	PUMP & SCREEN BLDG. ARCH. FLOOR PLANS ELEV. 709', 715', 733', 755'
SEP-03	STRUCT. TYP. PILE CAPS, CONCRETE DETAILS & GENERAL NOTES



NO.	REVISIONS	DATE	DESIGN	CHECK
00	ISSUED FOR TENDER	2010/10/01	DSS	RCB

SNC-LAVALIN INC.
 148 Nature Park Way
 Winnipeg, MB, Canada R3P 0X7
 204-786-8080

DESIGNED BY: D. S. SIDHU
 DRAWN BY: B. F. DICKSON
 SCALE: 1:10, 1:30
 DATE: 2010/09/13

CHECKED BY: R. C. BEAN
 APPROVED BY: C. J. REIMER
 RELEASED FOR CONSTRUCTION BY: J. VEILLEUX
 DATE: 2010/10/01

CONSULTANT NO.: 112577-0112-42DD-0032

ENGINEER'S SEAL

ORIGINAL DRAWING SEALED BY:
 D. S. SIDHU
 SNC-LAVALIN INC.
 MEMBER #24837
 2010/10/01
 REV. 00

THE CITY OF WINNIPEG
 WATER AND WASTE DEPARTMENT

SOUTH END WATER POLLUTION CONTROL CENTRE
 HEADWORKS UPGRADES
 PLAN, SECTIONS & DETAILS
 INLET STRUCTURE

CITY DRAWING NUMBER: 1-0102G-S0012
 SHEET: 002
 REV: 00
 SIZE: A1

1-0102G-S0012-002-00.DWG