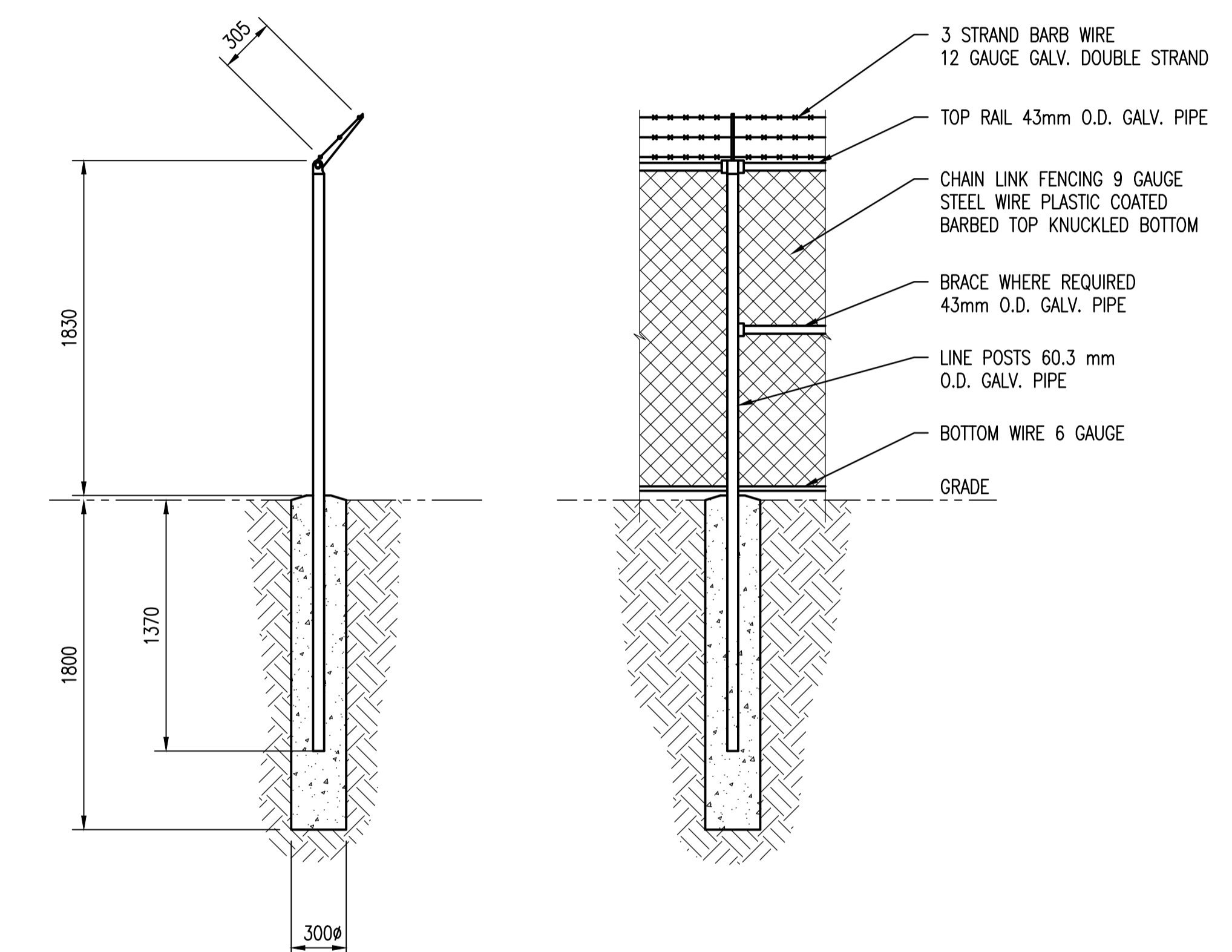
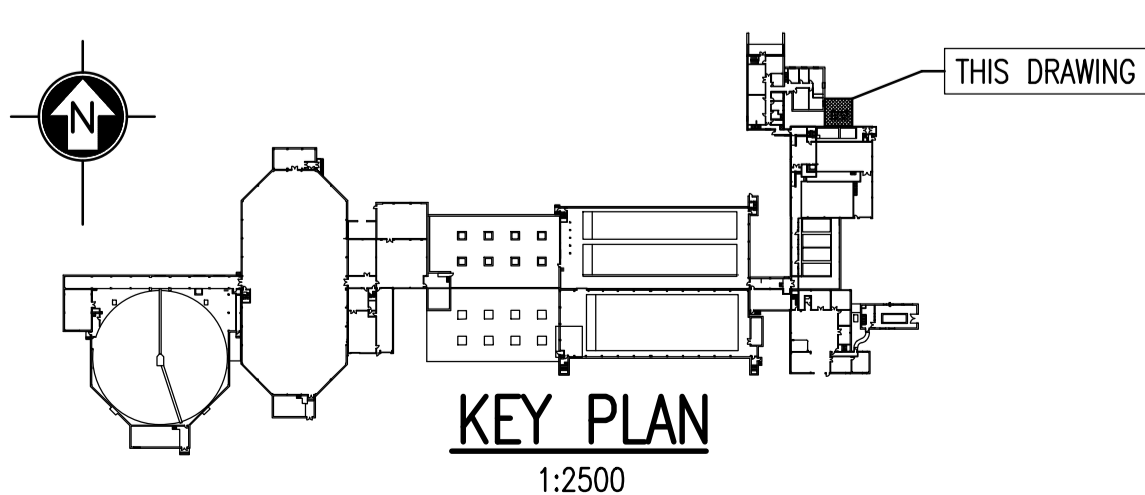
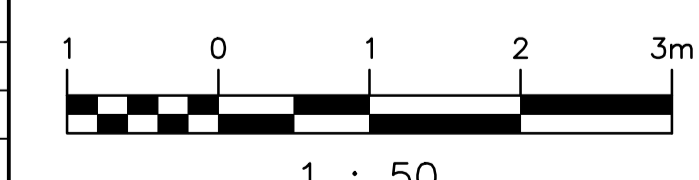
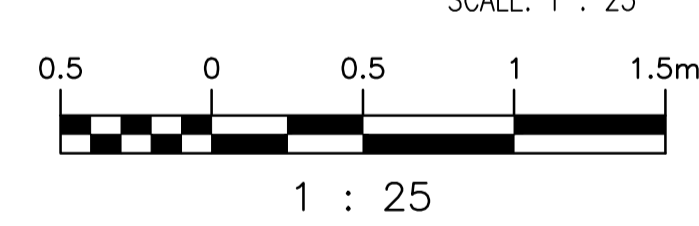


PLAN - INLET STRUCTURE NEW FENCING & LANDSCAPING
SCALE: 1 : 50



FENCE SECTION (TYP.) SCALE: 1 : 25
FENCE ELEVATION (TYP.) SCALE: 1 : 25



- NOTES:**
- SEE DRAWING 1-0102G-S0010 & 1-0102G-S0011 FOR GENERAL NOTES.
- FENCE NOTES:**
- CHAIN LINK FENCE AND GATES AS PER CITY OF WINNIPEG SPECIFICATION CW3550-R2.
 - TERMINAL POSTS:
 - SCH.40 O.D. 88.9mm
 - L = 3.2m
 - CONCRETE 300 DIA x1800
 - LINE POSTS:
 - SCH.40 O.D. 60.3mm
 - L = 3.2m
 - CONCRETE 300 DIA x1800
 - FABRIC:
 - 2" MESH 9 GAUGE MINIMUM.
 - TOP RAILS AND BRACES:
 - SCH.40 O.D. 43mm
 - CONCRETE:
 - CEMENT TYPE HSb
 - MINIMUM COMPRESSIVE STRENGTH AT 28 DAYS: 25 MPa
 - AIR CONTENT: 4-7%
 - MAXIMUM SLUMP: 80mm
 - MAXIMUM SIZE OF AGGREGATES: 20mm

SEP-21	PUMP & SCREEN BUILDING ARCH. FLOOR PLANS
SEP-03	STRUCT. TYP. PILE CAPS, CONCRETE DETAILS & GENERAL NOTES
DRAWING NUMBER	REFERENCE DRAWINGS

00	ISSUED FOR TENDER	2010/10/01	DSS	RCB
NO.	REVISIONS	DATE	DESIGN	CHECK

SNC-LAVALIN INC. 148 Nature Park Way Winnipeg, MB, Canada R3P 0X7 204-786-8080	
DESIGNED BY: D. S. SIDHU	CHECKED BY: R. C. BEAN
DRAWN BY: B. F. DICKSON	APPROVED BY: C. J. REIMER
SCALE: 1:25, 1:50	RELEASED FOR CONSTRUCTION BY: J. VEILLEUX
DATE: 2010/01/22	DATE: 2010/10/01
CONSULTANT NO.: 112577-0112-42DD-0034	

THE CITY OF WINNIPEG WATER AND WASTE DEPARTMENT			
ORIGINAL DRAWING SEALED BY: D. S. SIDHU SNC-LAVALIN INC. MEMBER #24837 2010/10/01 REV. 00			
CITY DRAWING NUMBER		SHEET	REV.
1-0102G-S0014		001	00
SIZE		A1	