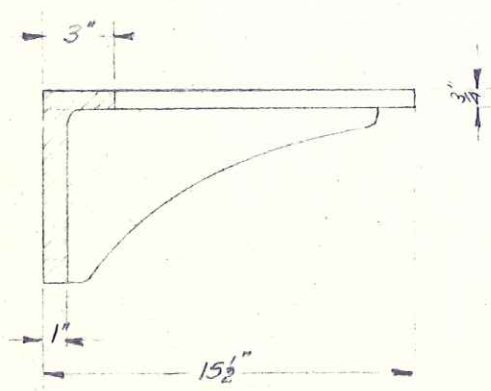
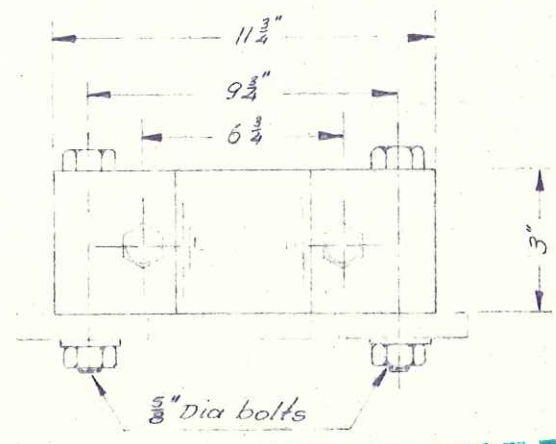


NOTE: MINIMUM LENGTH FROM FACE OF WALL TO 2 OF STEM = $14 \frac{9}{16}$ "



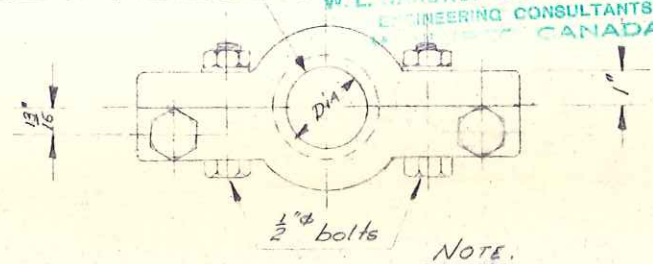
Section A - A



Bronze bushed bearing

APPROVED
 VARIATIONS FROM PLANS AND SPECIFICATIONS NOT APPROVED.
 JUN 12 1972 *DKR*
 W. L. WARDROP & ASSOCIATES LTD.
 ENGINEERING CONSULTANTS
 MISSISSAUGA, CANADA

STEM BRACKET - TYPE II
 (HEAVY TYPE)
 Cast of meehanite metal
 (Weight 75 lbs) -



NOTE: DIA. TO SUIT.

STEM GUIDE WITH BRONZE BUSHING.

Dr. Appy's	FLOW CONTROLS Ltd.	DHG #
CH.	Toronto	Ontario
APP.		
SCALE	DATE	
1/8" = 1"	FEB. 26 1972	ADJUSTABLE STEM GUIDE TYPE - II
		141-A-2