

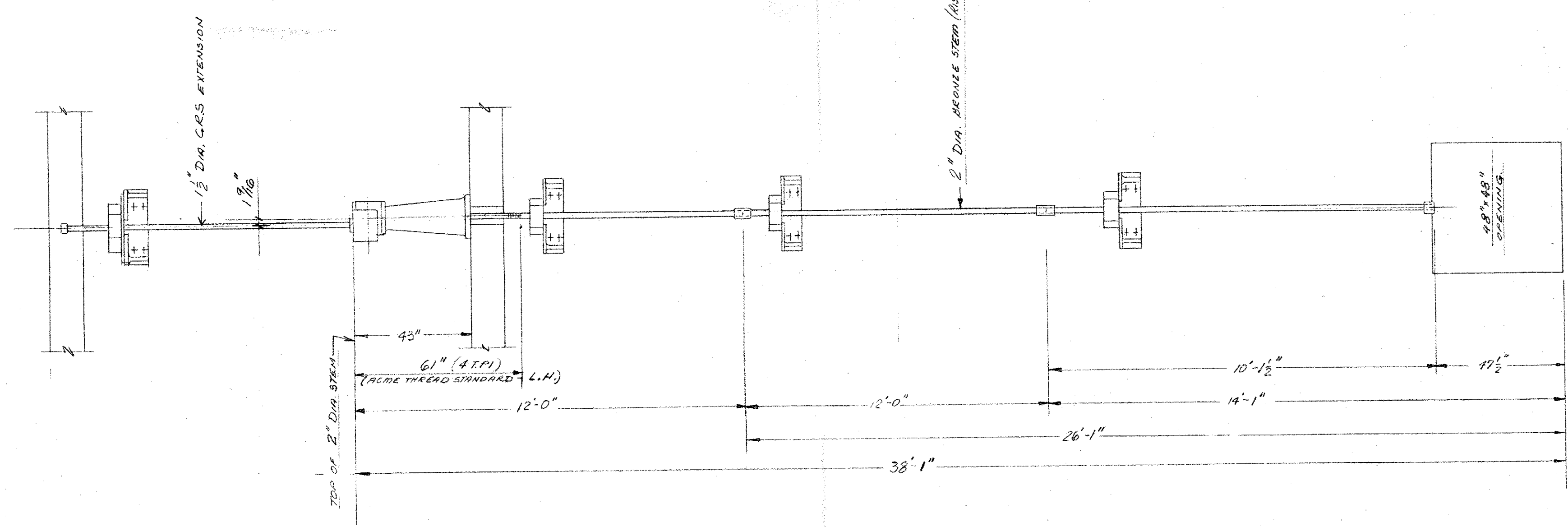
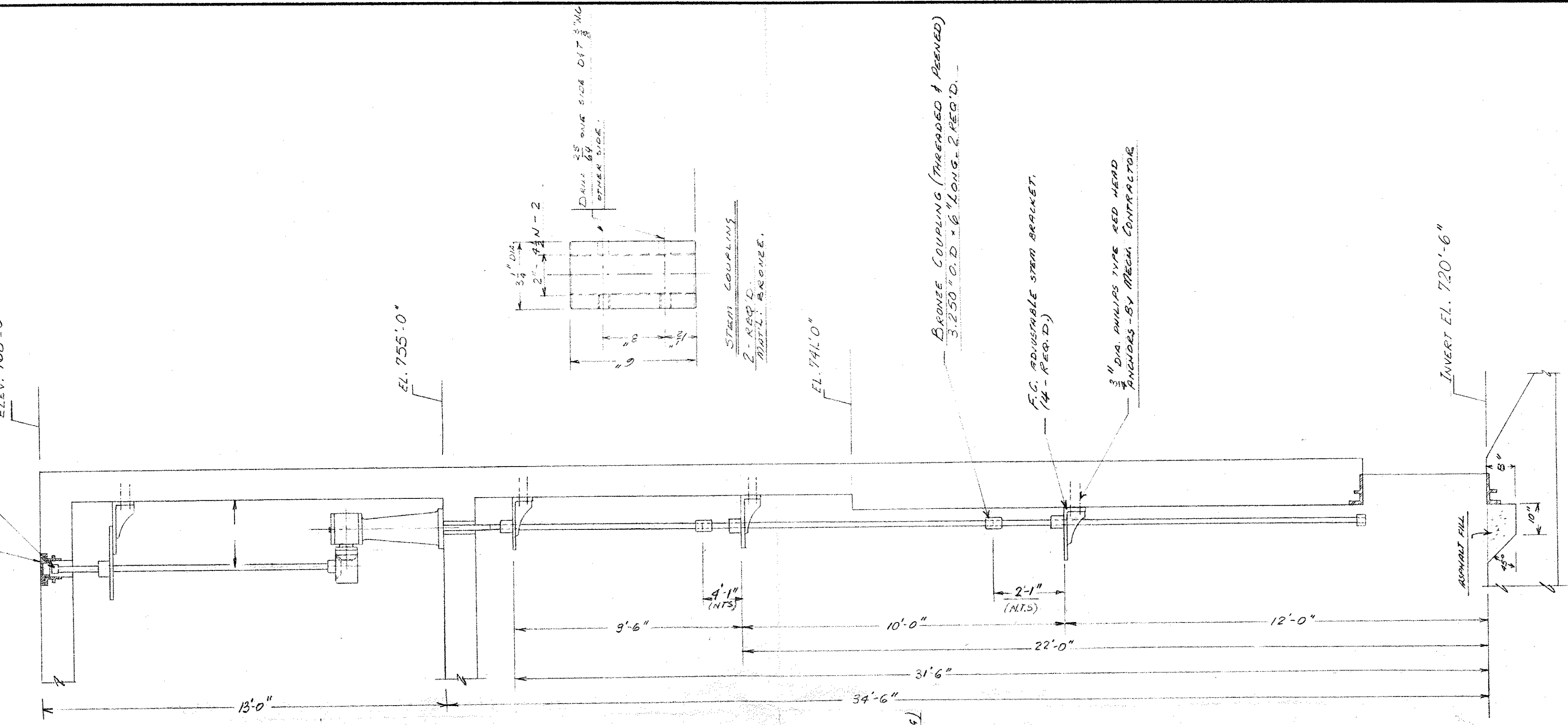
FLOW CONTROL C.I. FLOOR BOX

2" SO. OPERATING NUT
ELEV. 768'-0"

EL. 755'-0"

EL. 741'-0"

INVERT EL. 720'-6"



COUPLINGS AND BRACKETS LOCATION FOR G-1(A,B) SLUICE GATES SCALE: 3/8"=1'-0"

APPROVED PLANS AND SPECIFICATIONS NOT APPROVED BY THE ENGINEER JUN 2 1972 W.L.W. DUNN & ASSOCIATES LTD. ENGINEERING CONSULTANTS CANADA

G-1 Plant Influent Gate

REVISED MAY 25 1972

COUPLINGS AND STEM BRACKETS LOCATION FOR 48x48 SLUICE GATE M5 NO G-1(A-B)	FLOW CONTROLS LTD. SCARBOROUGH ONTARIO		DR. I. Onyiah	DATE MARCH 7/72	SCALE 3/8"=1'-0"
	DEP.	CH.		DWG. No. GA-9769	
		APP.			

15C 6 13-68