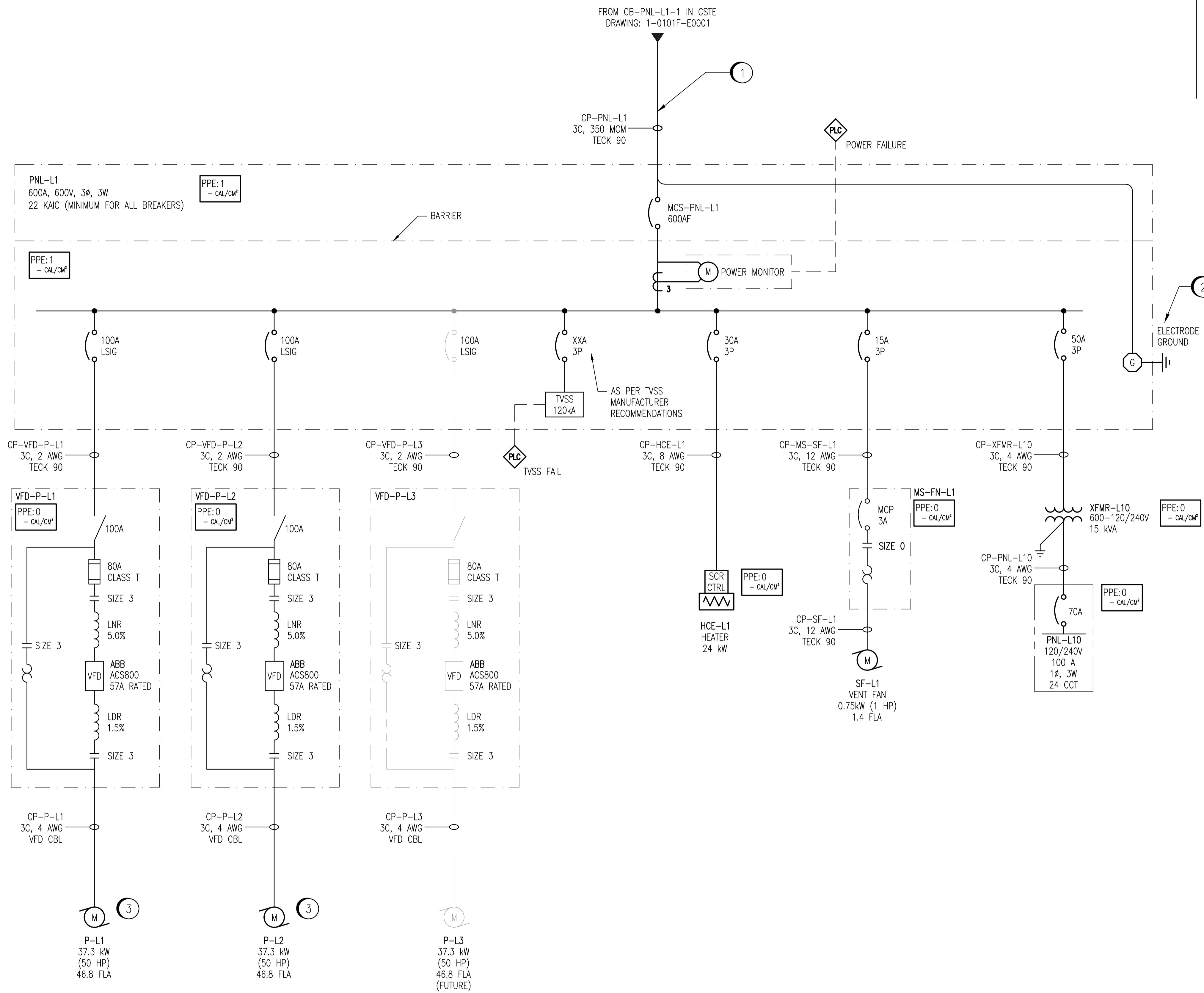


INSTALLATION NOTES:

- 1 REPLACE EXISTING BURIED INCOMING CABLES WITH 3C, 350 MCM TECK WITH INTEGRAL 3 AWG GROUND CONDUCTOR.
- 2 INSTALL NEW GROUND ELECTRODE.
- 3 INSTALL NEW 50HP WASTEWATER LIFT PUMP MOTORS.



ARC FLASH VALUES CALCULATED ARE PRELIMINARY AND WILL BE FINALIZED DURING CONSTRUCTION.

LEGEND:

--- FUTURE

— NEW WORK

- NOTES:**
1. CIRCUIT BREAKER RATINGS HAVE BEEN SELECTED BASED UPON THE SELECTIVE COORDINATION REQUIREMENTS.



<p>SNC-LAVALIN INC. 148 Nature Park Way Winnipeg, MB, Canada R3P 0X7 204-786-8080</p>				ENGINEER'S SEAL ORIGINAL DRAWING SEALED BY: C. REIMER SNC-LAVALIN INC. 2010/10/02 REV. 00	
DESIGNED BY: B. CLEVEN DRAWN BY: S. COATES SCALE: NTS DATE: 2010/06/30		CHECKED BY: C. REIMER APPROVED BY: C. REIMER RELEASED FOR CONSTRUCTION BY: K. ZUREK DATE: 2010/10/04		CITY DRAWING NUMBER 1-0159L-E0003	
NO. 00 ISSUED FOR TENDER DATE: 2010/09/29 DESIGN: BC CHECK: CJR		CONSULTANT NO.: 113368-0000-47DD-0003		BID OPP.: 760-2010	
				SHEET REV. SIZE 001 00 A1	