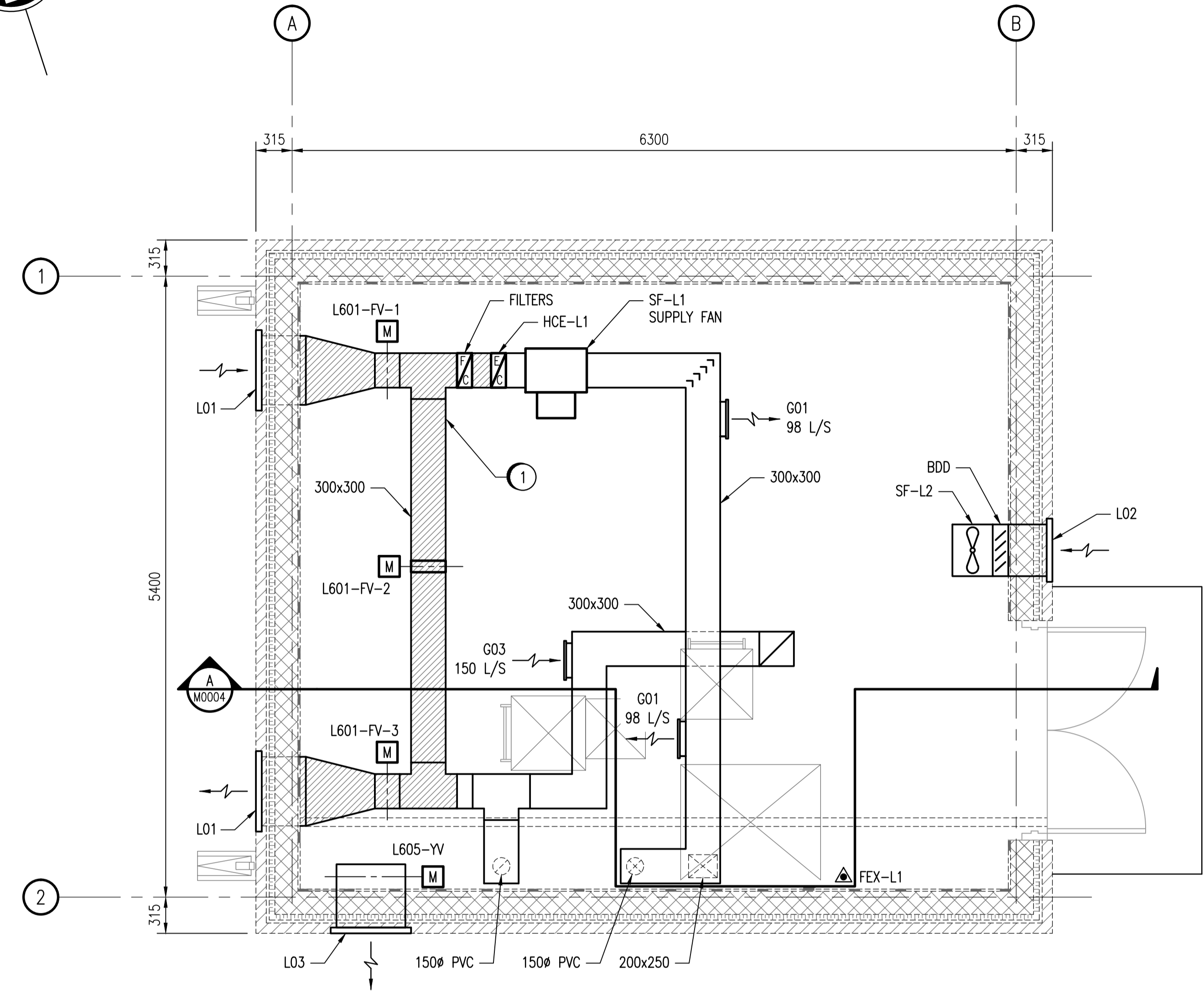


LEGEND

- FIRE EXTINGUISHER
- MOTORIZED DAMPER ACTUATOR
- INSULATION



MAIN FLOOR PLAN
SCALE: 1 : 30

ELECTRIC DUCT HEATER SCHEDULE

TAG	SERVICE	MAKE & MODEL	SIZE	KW	NOTES
HCE-L1	SUPPLY	THERMOLEC FT	300x300	24.0	TUBULAR ELEMENTS & SCR CONTROLLER

FAN SCHEDULE

TAG	SERVICE	MAKE & MODEL	LOCATION	CAPACITY (L/S)	ESP (Pa)	SPEED (RPM)	MOTOR (kW)	NOTES
SF-L1	SUPPLY	GREENHECK BSQ-90	MAIN FLOOR	367	311	2291	0.56	SPRING ISOLATION AND INSULATED HOUSING
SF-L2	SUPPLY	GREENHECK SS1-12-436-G	MAIN FLOOR	266	62	1550	0.11	BACKDRAFT DAMPER WALL HOUSING & OSHA SIDE GUARD

GRILLE SCHEDULE

TAG	MAKE & MODEL
G01	E.H. PRICE 250x150/510/D/F/L/A
G02	E.H. PRICE 600x250/530/D/F/L/A
G03	E.H. PRICE 250x250/530/D/F/L/A

LOUVRE SCHEDULE

TAG	MAKE & MODEL	SIZE
L01	E.H. PRICE 2E445	600x600
L02	E.H. PRICE 2E445	450x450
L03	E.H. PRICE 2E445	600x450

FIRE EXTINGUISHER SCHEDULE

TAG	RATING/WEIGHT (MINIMUM)	TYPE	COMMENT
FEX-L1	2A, 5BC, 10LB (4.5 KG)	DRY CHEMICAL	NEW
FEX-L2	5BC, 5LB (2.3 KG)	CO2	NEW
FEX-L3	5BC, 5LB (2.3 KG)	DRY CHEMICAL	NEW

DAMPER SCHEDULE

TAG	MAKE & MODEL	SIZE	BLADE CONFIGURATION
L601-FV-1	TAMCO 9000SC	300x300	PARALLEL
L601-FV-2	TAMCO 1000	300x300	OPPOSED
L601-FV-3	TAMCO 9000SC	300x300	PARALLEL
L605-YV	TAMCO 9000SC	600x450	PARALLEL

GENERAL NOTES:

- SEE ARCHITECTURAL DRAWINGS FOR WALL PENETRATIONS.
- INSTALL FIRE EXTINGUISHERS IN ACCORDANCE WITH NFPA 10.

SPECIFIC NOTES:

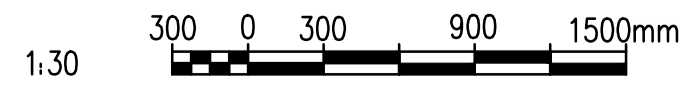
- INSTALL 50mm INSULATION WITH VAPOUR RETARDER AS SHOWN.

DESIGN CRITERIA:

THE BUILDING ENVIRONMENTAL CONTROL SYSTEMS SHOWN ON THESE DRAWINGS HAVE BEEN DESIGNATED TO THE REQUIREMENTS OF THE MANITOBA BUILDING CODE AND VENTILATED AT A MINIMUM OF 6 AIR CHANGES PER HOUR CONTINUOUS. MORE SPECIFICALLY AS FOLLOWS:

- OUTDOOR CONDITIONS OF -36°C IN WINTER AND 30/23°C IN SUMMER.
- INDOOR CONDITIONS OF 15°C IN WINTER AND 35°C IN SUMMER.

AREA	VOLUME (M³)	MIN. AIR CHANGES PER HOUR	MIN. AIRFLOW (L/s)
MAIN FLOOR	117.4	6	196
MOTOR ROOM	46.7	6	78
PUMP ROOM	31.4	6	52
INLET VALVE CHAMBER	24.4	6	41



<p>SNC-LAVALIN INC. 148 Nature Park Way Winnipeg, MB, Canada R3P 0X7 204-786-8080</p>		<p>ENGINEER'S SEAL</p> <p>ORIGINAL DRAWING SEALED BY: S. NORSWORTHY SNC-LAVALIN INC. MEMBER #20725 2010/10/01 REV. 00</p>	<p>THE CITY OF WINNIPEG WATER AND WASTE DEPARTMENT</p> <p>MARION WASTEWATER PUMPING STATION INSTALLATION OF PUMPING UNITS & BUILDING UPGRADES HVAC PLAN LAYOUT MAIN FLOOR</p>
<p>DESIGNED BY: S. NORSWORTHY</p> <p>DRAWN BY: S. COATES</p> <p>SCALE: AS NOTED</p> <p>DATE: 2010/07/05</p>	<p>CHECKED BY: S. NORSWORTHY</p> <p>APPROVED BY: C. REIMER</p> <p>RELEASED FOR CONSTRUCTION BY: K. ZUREK</p> <p>DATE: 2010/10/04</p>	<p>CONSULTANT NO.: 113368-0000-450D-0003</p> <p>BID OPP.: 760-2010</p>	<p>CITY DRAWING NUMBER 1-0159L-M0003</p> <p>SHEET 001</p> <p>REV. 00</p> <p>SIZE A1</p>
<p>00 ISSUED FOR TENDER</p> <p>NO. REVISIONS</p>	<p>2010/09/29</p> <p>DATE</p>	<p>SN</p> <p>DESIGN CHECK</p>	<p>1-0159L-M0003-001-00.dwg</p>