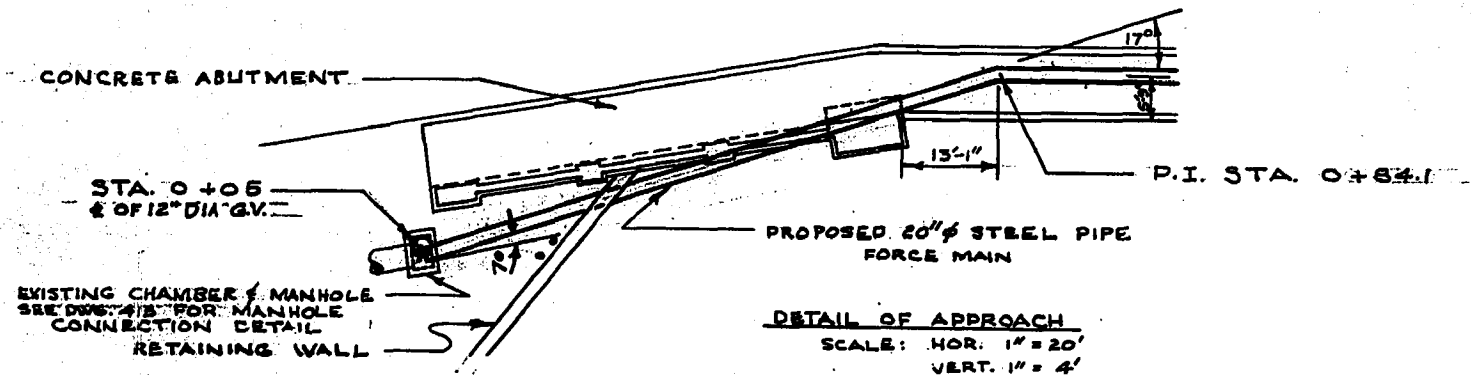
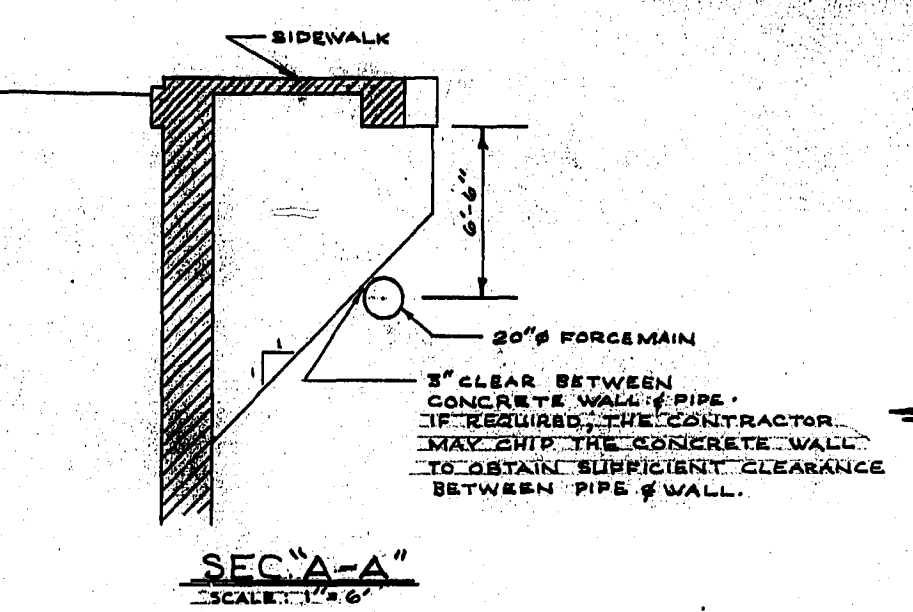


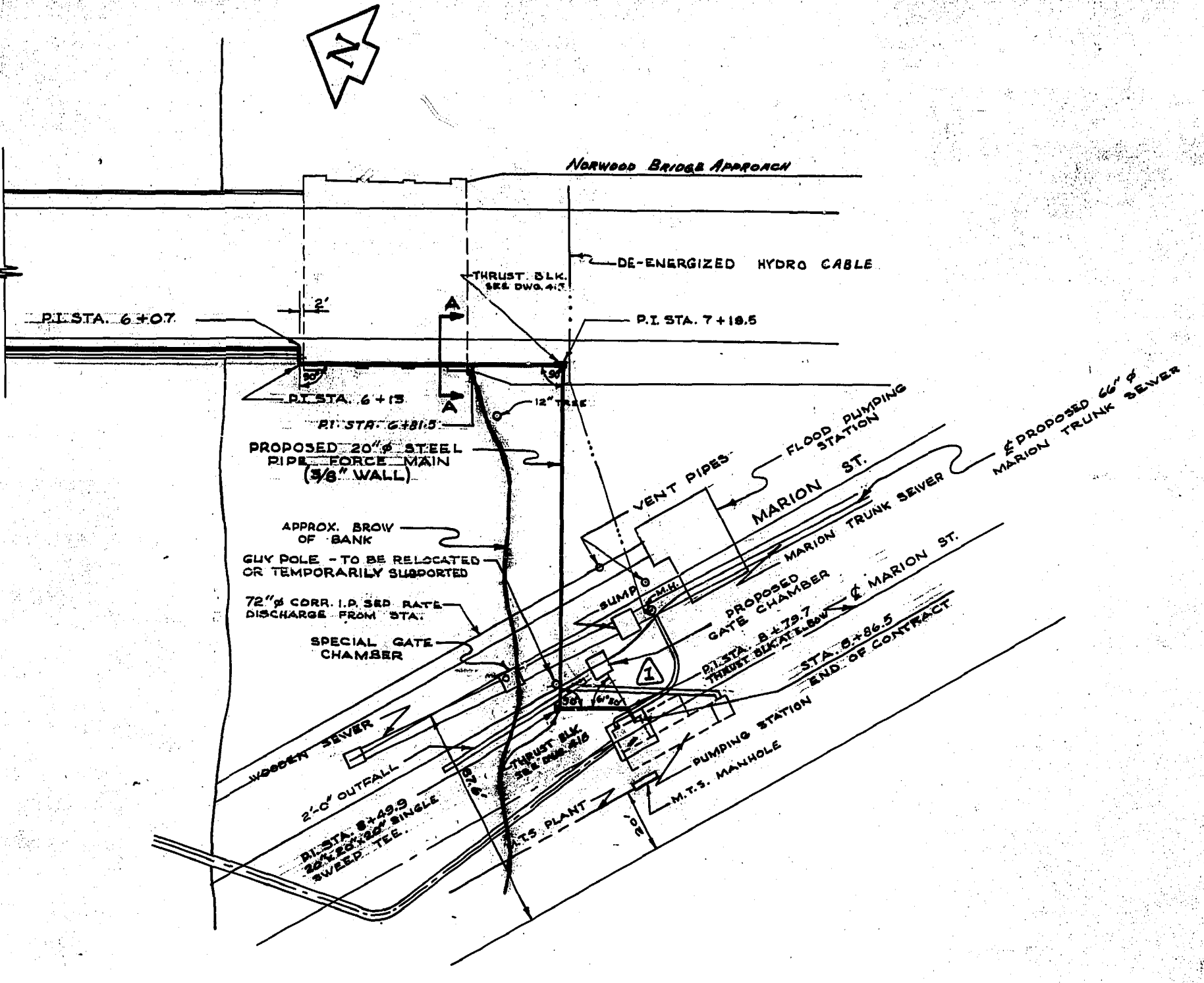
BRIDGE APPROACH - WINNIPEG SIDE
SCALE: 1"=40'



DETAIL OF APPROACH
SCALE: HOR. 1"=20'
VERT. 1"=4'



SEC. A-A
SCALE: 1"=6'



BRIDGE APPROACH - ST. BONIFACE SIDE
SCALE: HOR. 1"=40'
VERT. 1"=4'

- NOTE:**
- 1) SEE DWG. 413 FOR BELL AVE. & MAIN ST. DISCHARGE CHAMBER CONNECTION.
 - 2) SEE DWG. 412 FOR DETAILS OF 20" FORCE MAIN OVER NORWOOD BRIDGE.
 - 3) SEE DWG. 415 FOR THRUST BLOCK DETAILS.
 - 4) ALL 90° BENDS ARE TO BE LONG RADIUS MITERED ELBOWS (4 PIECE).
 - 5) DIMENSIONS TO BE FIELD CHECKED PRIOR TO FABRICATION OF PIPE.

760

760

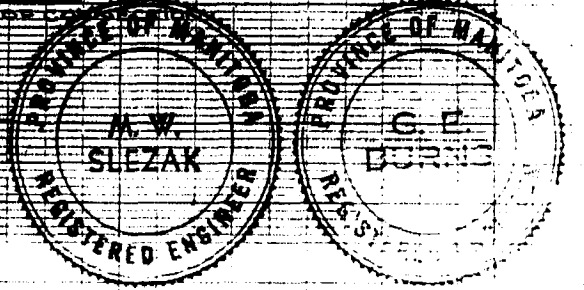
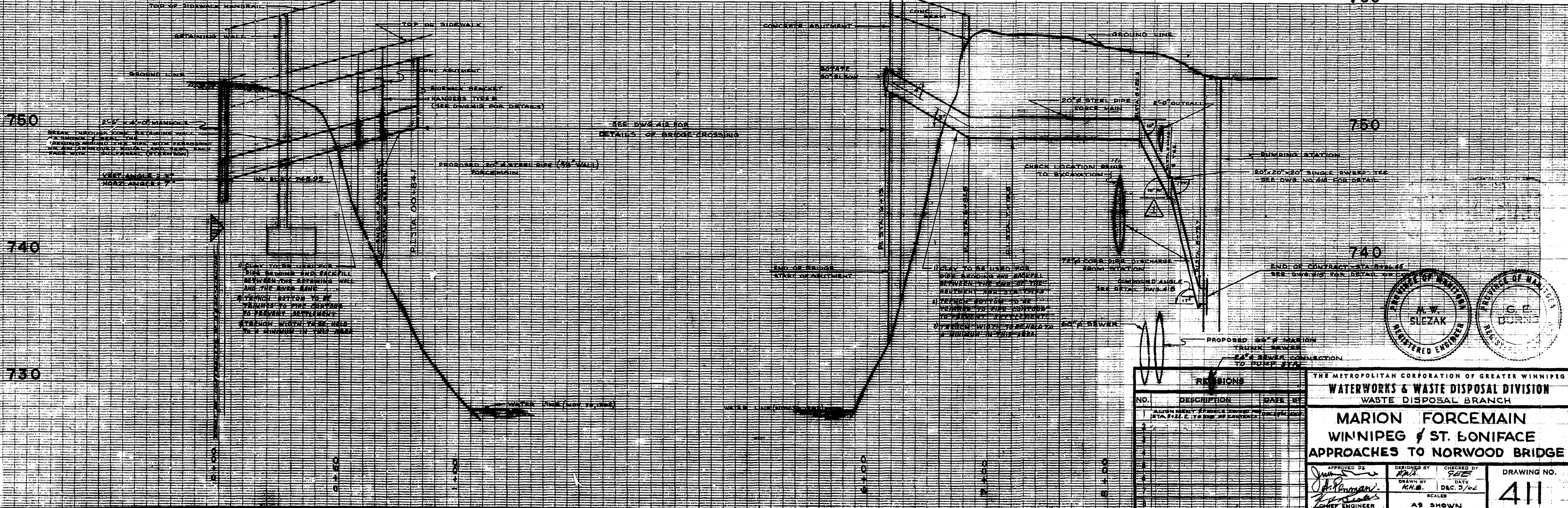
750

750

740

740

730



| REVISIONS | | |
|-----------|---|----------------|
| NO. | DESCRIPTION | DATE BY |
| 1 | ALIGNMENT OF FORCE MAIN TO PUMP STATION | 12/3/02 M.M.B. |
| 2 | ALIGNMENT OF 60\"/> | |

| | | | |
|--|---|---|---------------------------|
| THE METROPOLITAN CORPORATION OF GREATER WINNIPEG | | | |
| WATERWORKS & WASTE DISPOSAL DIVISION | | | |
| WASTE DISPOSAL BRANCH | | | |
| MARION FORCE MAIN | | | |
| WINNIPEG & ST. BONIFACE | | | |
| APPROACHES TO NORWOOD BRIDGE | | | |
| APPROVED BY <i>[Signature]</i> M.M.B. REGISTERED ENGINEER | DESIGNED BY <i>[Signature]</i> M.M.B. | CHECKED BY <i>[Signature]</i> M.M.B. DATE DEC. 3/02 | DRAWING NO. 411 |