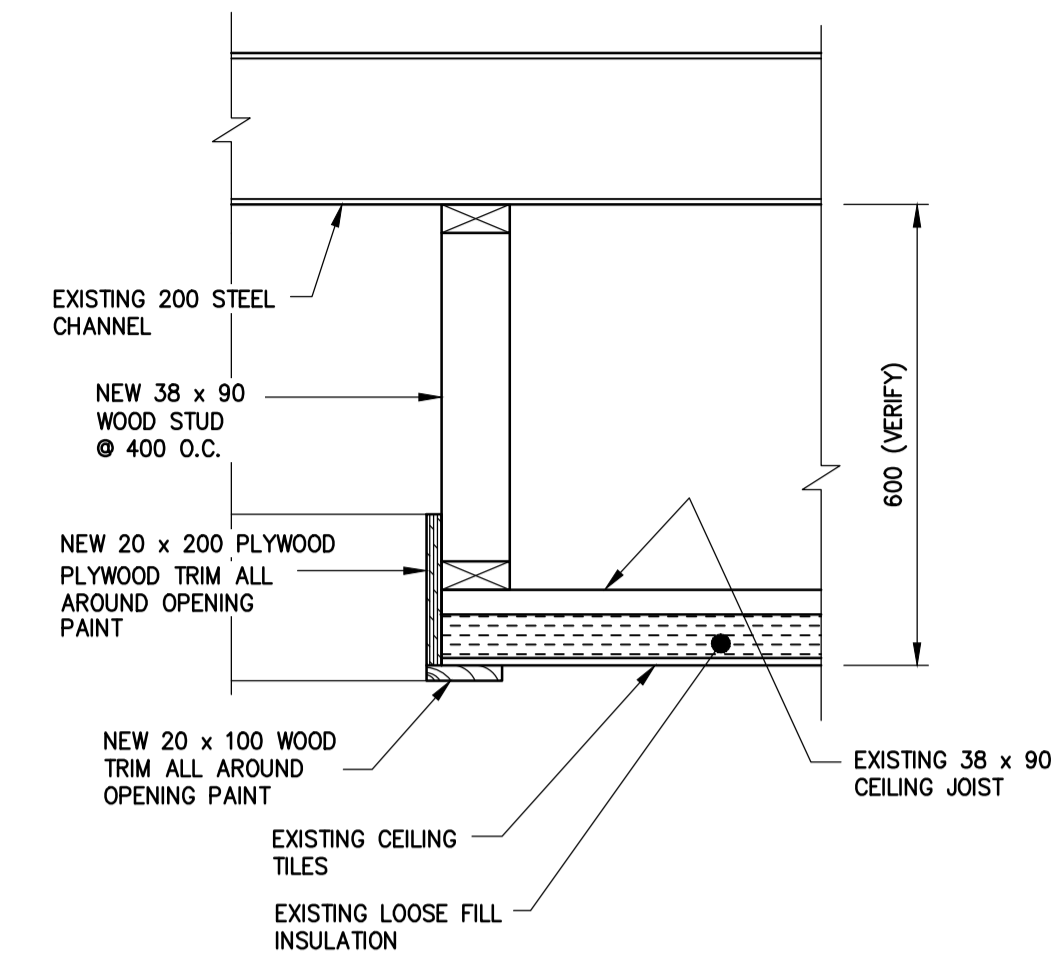
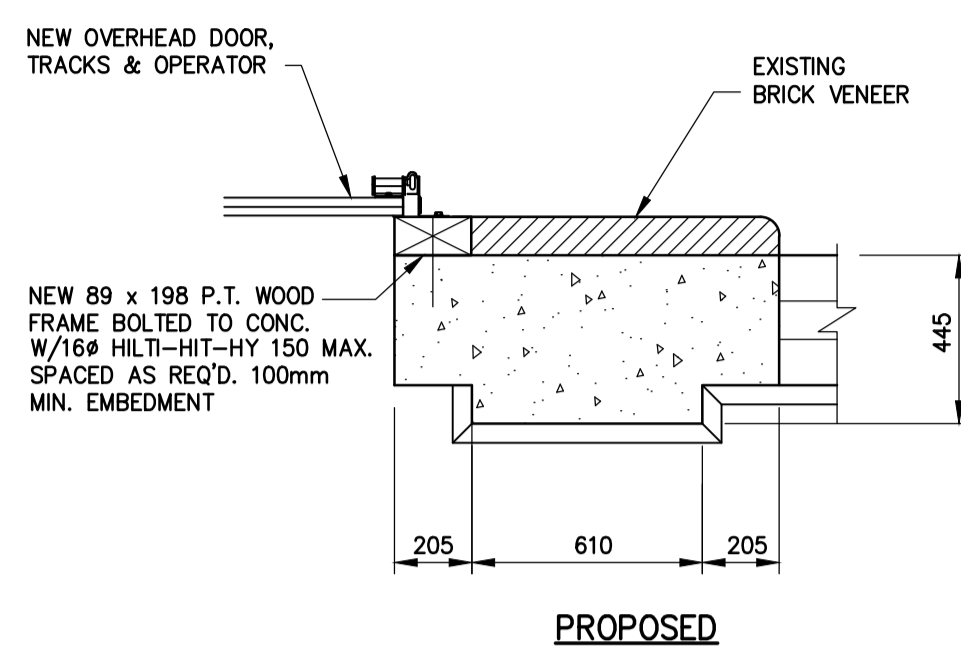
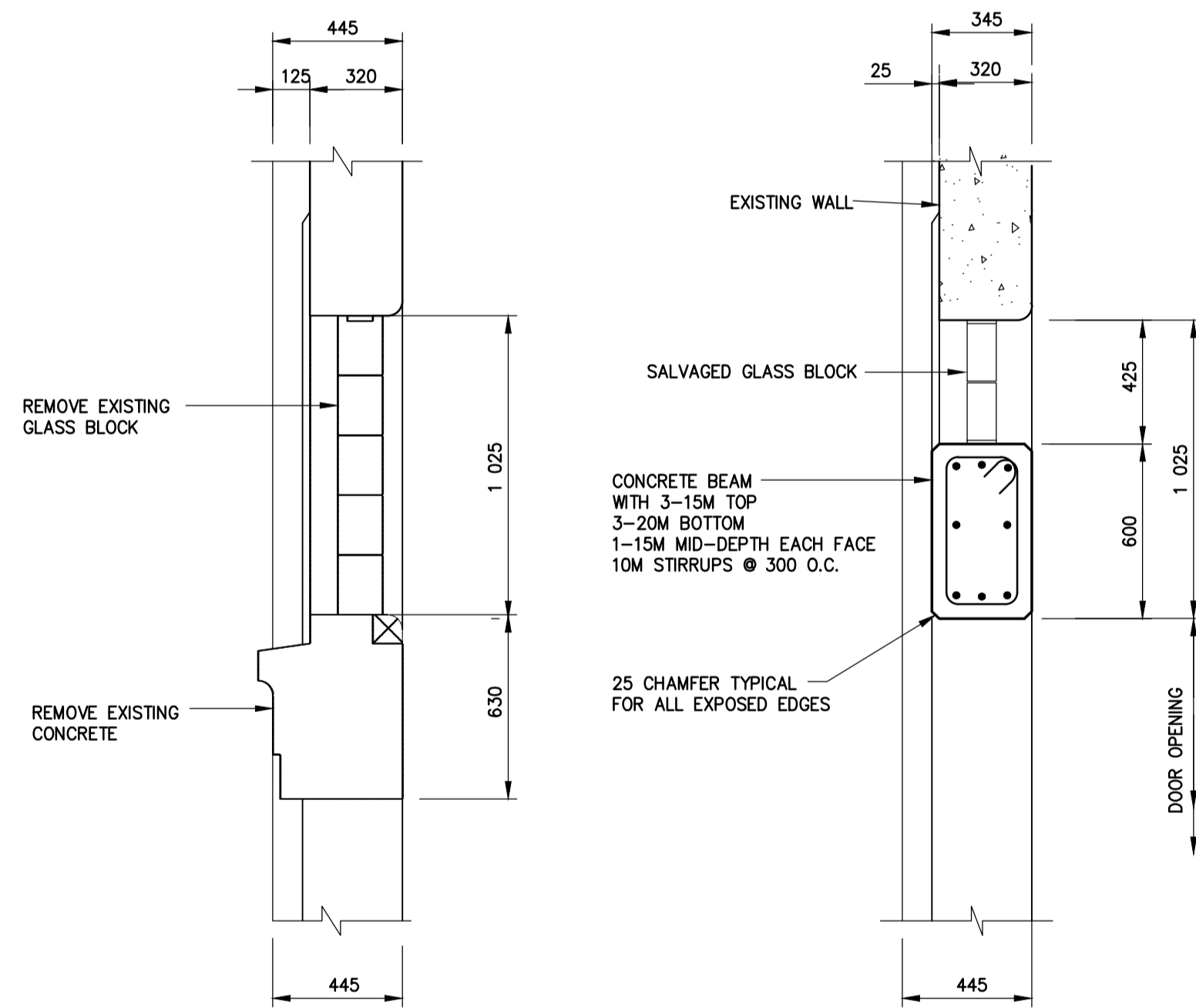


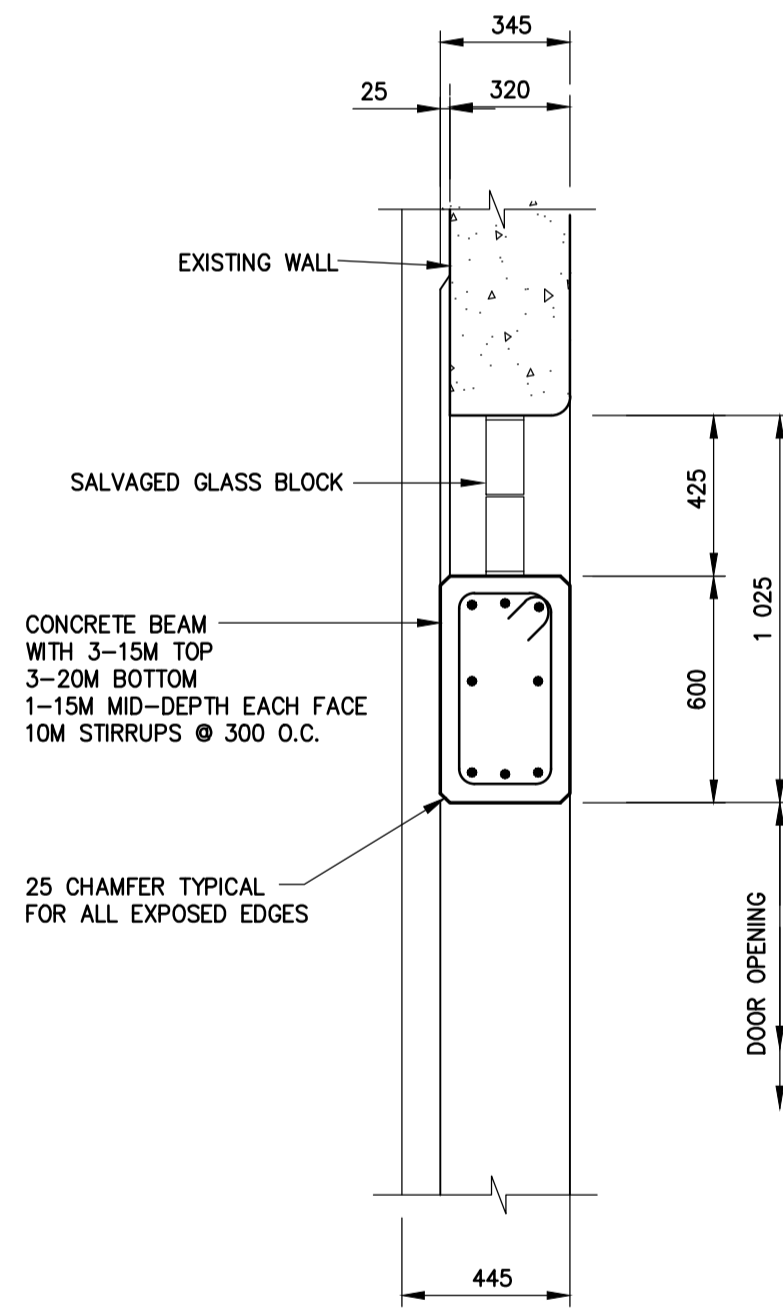
DETAIL 1-S2  
1:20 S1



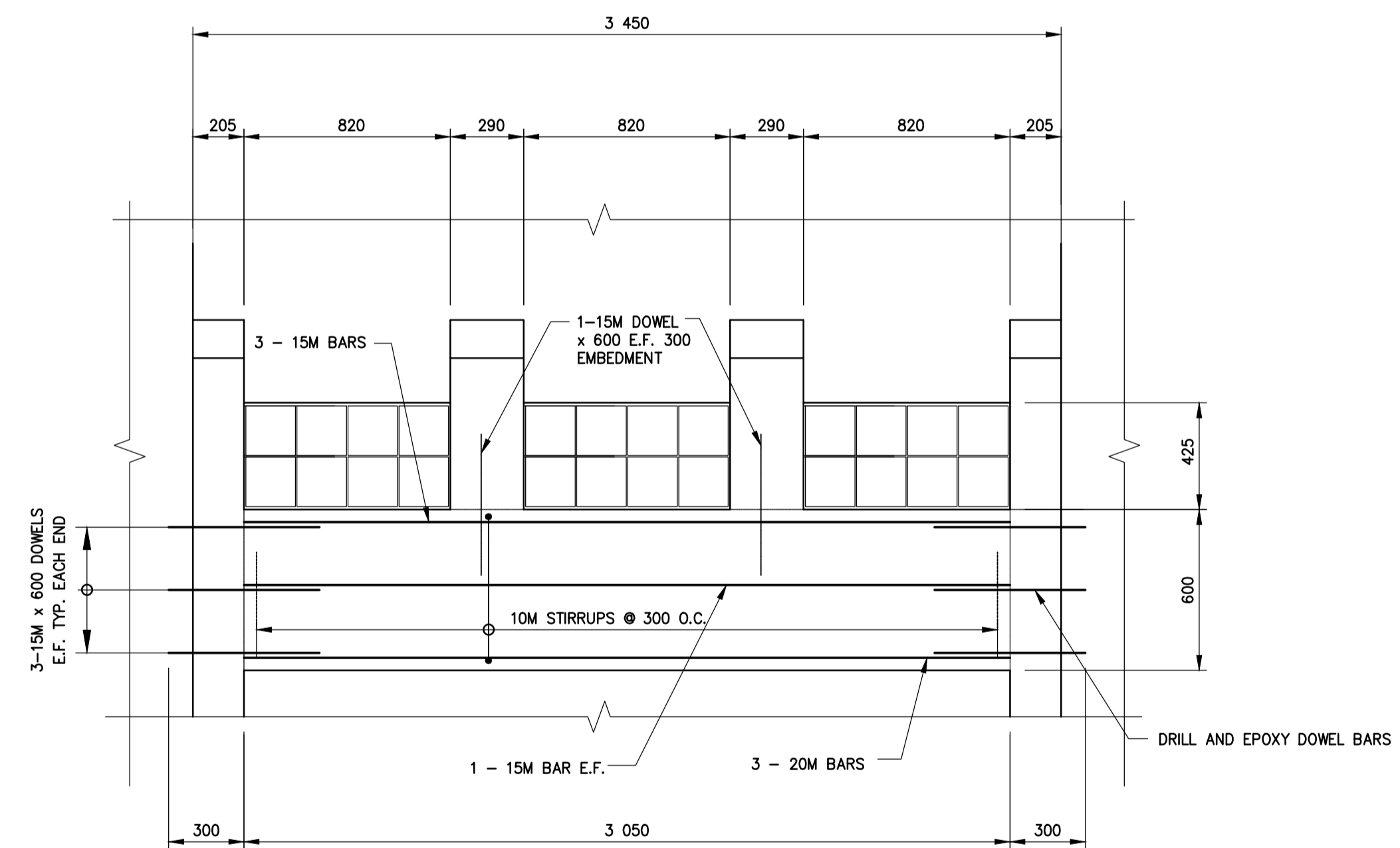
DETAIL 4-S2  
1:10 S1



DETAIL 2-S2  
1:20 S1



DETAIL 3-S2  
1:20 S1



REINFORCING ELEVATION  
1:20

ALL DIMENSIONS TO EXISTING SURFACES SHALL BE TAKEN AS ±. VERIFY PRIOR TO CONSTRUCTION.



NOTE: These design documents are prepared solely for the use by the party with whom the design professional has entered into a contract and there are no representations of any kind made by the design professional to any party with whom the design professional has not entered into a contract.

A-B  
C  
A = DETAIL/SECTION No.  
B = DRAWING WHERE SHOWN  
C = DRAWING WHERE TAKEN

METRIC  
WHOLE NUMBERS INDICATE MILLIMETRES  
DECIMAL NUMBERS INDICATE METRES

G.B.M. ELEV.	DESIGNED BY MW	CHECKED BY JPL
	DRAWN BY C.JL / RCS	APPROVED BY JPL
	HOR. SCALE AS NOTED	RELEASED FOR ORIGINAL CONSTRUCTION SIGNED BY K. ZUREK, P. ENG.
	VERT. SCALE AS NOTED	
0 ISSUED FOR TENDER	10 11 10	JPL
No. REVISIONS	DATE BY	DATE
		10 11 10
		10 11 10

ENGINEER'S SEAL  
  
 BIDD OPPORTUNITY 786 - 2010  
 PLOT DATE: 10 11 10

THE CITY OF WINNIPEG  
 WATER AND WASTE DEPARTMENT  
 Winnipeg

GARAGE OVERHEAD DOOR  
 RETROFIT  
 360 McPHILLIPS STREET, WINNIPEG, MB.

SECTIONS & DETAILS

CONSULTANT DRAWING NUMBER 5510032-S2  
 SHEET 2 OF 2  
 CITY DRAWING NUMBER D - 12273

Nov 10, 2010, 4:46pm P:\5010001-5510032-000 Garage Door Retrofit - 360 McPhillips\MMM Drawings\5510032.mcp\hps garage S11.plm and section\10823.dwg-jls.S2