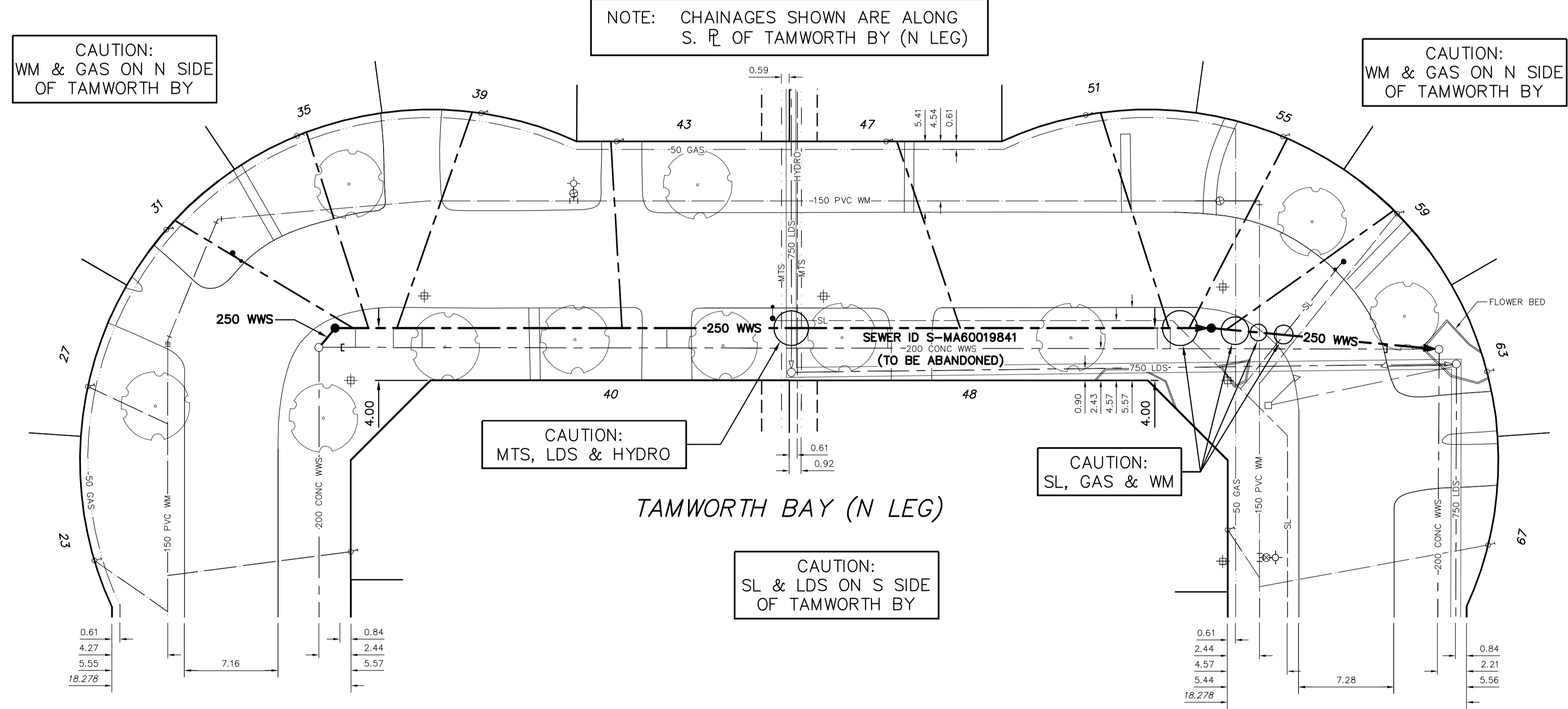


SEWER SERVICE INFORMATION		
ADDRESS	SIZE	€ DIST
27 TAMWORTH BY	-	-
31 TAMWORTH BY	-	-
35 TAMWORTH BY	-	-
39 TAMWORTH BY	-	-
40 TAMWORTH BY	-	-
43 TAMWORTH BY	-	-
47 TAMWORTH BY	-	-
48 TAMWORTH BY	-	-
51 TAMWORTH BY	-	-
55 TAMWORTH BY	-	-
59 TAMWORTH BY	-	-
63 TAMWORTH BY	-	-

SEWER JUNCTION INFORMATION FROM SEWER VIDEO INSPECTION SEWER ID S-MA60019841			
DISTANCE FROM MH ID S-MH60017239			
2.8	E	150*	NORTH CN
5.7	E	150*	NORTH CN
7.9	E	150*	TOP CX
26.6	E	150*	NORTH CN
43.5	E	150*	NORTH CN
64.1	E	150*	TOP CN
65.1	E	150*	NORTH CXI
73.2	E	150*	NORTH CX



- CONSTRUCTION NOTES:**
1. ALL PIPE SHALL HAVE CLASS B - TYPE 2 BEDDING
  2. INSTALL SEWER BY TRENCHLESS METHODS.
  3. CONFIRM THE LOCATION OF ALL SEWER SERVICES.
  4. BACKFILL UNDER PAVEMENT, IN SIDEWALKS, & WITHIN 1.0 OF PAVEMENT TO BE CLASS 3.
  5. BACKFILL IN BOULEVARD TO BE CLASS 5.
  6. RENEW SEWER SERVICES TO R.
  7. INSTALL SEWER SERVICE RISERS TO ELEVATION WHERE MINIMUM SLOPE OF 1% IS MAINTAINED FOR ALL SERVICES.

**METRIC**  
WHOLE NUMBERS INDICATE MILLIMETRES  
DECIMALIZED NUMBERS INDICATE METRES

**WARNING**  
IF POWER EQUIPMENT OR EXPLOSIVES ARE TO BE USED FOR EXCAVATION ON THIS PROJECT THE CONTRACTOR MUST:  
1) NOTIFY THE GAS COMPANY OF THE PROPOSED LOCATION OF EXCAVATION.  
2) TAKE PRECAUTION TO AVOID DAMAGE TO GAS COMPANY INSTALLATIONS.  
SEE PROVINCIAL REGULATION 210/72 FOR DETAILS

200 WM	WATERMAIN	200 WM	SL, HYDRO	150 WM	WATERMAIN	150 WM
⊕	HYDRANT	⊕	MTS	⊕	HYDRANT	⊕
⊕	VALVE	⊕	TRAFFIC SIGNALS	⊕	VALVE	⊕
—	LAND DRAINAGE SEWER	—	GAS	—	LAND DRAINAGE SEWER	—
—	WASTEWATER SEWER	—	SURVEY BAR	—	WASTEWATER SEWER	—
○	MANHOLE	○	FENCE	○	€ PROFILE	○
□	CATCH BASIN	□	POLE - HYDRO, MTS	□	GROUND ABOVE PIPE	□
▽	CURB INLET	▽	CURB STOP	▽	€ DITCH (NORTH & WEST)	▽
—	JUNCTIONS	—	GUY ANCHOR	—	€ DITCH (SOUTH & EAST)	—
—	CULVERT	—	LIGHT STANDARD	—	GUTTER (NORTH & WEST)	—
—	ANODE	—	TREE	—	GUTTER (SOUTH & EAST)	—
—	EXISTING	—	LEGEND-PLAN	—	LEGEND-PROFILE	—

LOCATION APPROVED UNDERGROUND STRUCTURES		B.M. ELEV.	FIELD BOOK #:
SUPV. U/G STRUCTURES COMMITTEE	DATE	POSTED TO LBIS	
NOTE: LOCATION OF UNDERGROUND STRUCTURES AS SHOWN ARE BASED ON THE BEST INFORMATION AVAILABLE BUT NO GUARANTEE IS GIVEN THAT ALL EXISTING UTILITIES ARE SHOWN OR THAT THE GIVEN LOCATIONS ARE EXACT. CONFIRMATION OF EXISTENCE AND EXACT LOCATION OF ALL SERVICES MUST BE OBTAINED FROM THE INDIVIDUAL UTILITIES BEFORE PROCEEDING WITH CONSTRUCTION.			
NO.	REVISIONS	DATE	BY

**CITY OF WINNIPEG**  
WATER AND WASTE ENGINEERING DIVISION

DESIGNED BY: SC  
CHECKED BY: SC

DRAWN BY: CJH  
APPROVED BY: KZ

HOR. SCALE: 1:250  
VERTICAL: 1:50

DATE: 2010 10 20  
DATE:

ENGINEER'S SEAL  
ORIGINAL SIGNED BY  
**S.R.J. COURNOYER**  
10/10/21

**THE CITY OF WINNIPEG**  
WATER AND WASTE DEPARTMENT

2010 WASTEWATER SEWER RENEWALS AND REPAIRS, CONTRACT 15  
**TAMWORTH BAY (N LEG)**  
MH AT TAMWORTH BAY (W LEG) TO MH AT TAMWORTH BAY (E LEG)

SHEET 16 OF 16  
CITY DRAWING NUMBER  
**9431**