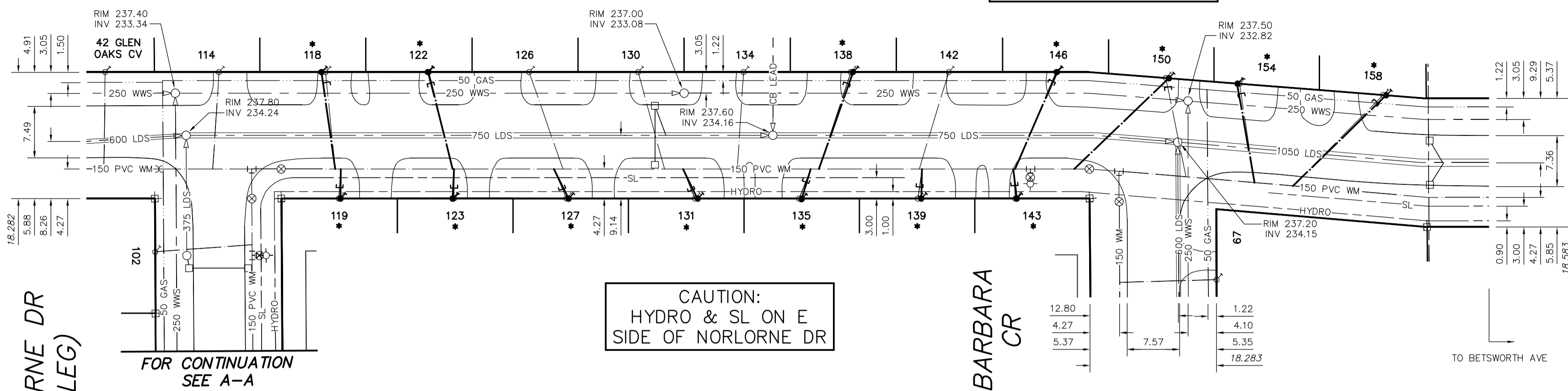
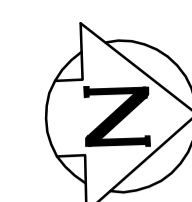


NORLORNE DRIVE (W LEG)

CAUTION:
GAS & WWS ON W
SIDE OF NORLORNE DR



CAUTION:
HYDRO & SL ON E
SIDE OF NORLORNE DR

BARBARA
CR

TO BETSWORTH AVE

NORLORNE DR
(S LEG)

FOR CONTINUATION
SEE A-A

WATER SERVICE INFORMATION

ADDRESS	SIZE(mm) & TYPE (STREET)	SIZE(mm) & TYPE (PROP.)	SHORT & LONG MEASUREMENT	CORP. LOCATION	REMARKS
15 NORLORNE RD	20 POLY	20 COPPER	5.05 NSL HSE	60.43>NNL BARBARA	0.8 S OF S/C RENEW TO 150 W/20 COPPER
22 NORLORNE RD	20 POLY	20 COPPER	6.14 NSL HSE	37.14>NNL BARBARA	5.2 N OF S/C RENEW TO 150 W/20 COPPER
26 NORLORNE RD	20 POLY	20 COPPER	5.41 NSL HSE	19.15>NNL BARBARA	0.8 N OF S/C RENEW TO 150 W/20 COPPER
34 NORLORNE RD	20 POLY	20 COPPER	4.83 SNL HSE	12.48>NNL NORLORNE	0.2 N OF S/C RENEW TO 150 W/20 COPPER
38 NORLORNE RD	20 POLY	20 COPPER	6.36 NSL HSE	13.68>NNL BARBARA	1.8 S OF S/C RENEW TO 150 W/20 COPPER
46 NORLORNE RD	20 POLY	20 COPPER	4.91 SNL HSE	12.48>NNL NORLORNE	3.0 S OF S/C RENEW TO 150 W/20 COPPER
62 NORLORNE RD	20 POLY	20 COPPER	4.51 EWL HSE	5.92>NNL NORLORNE	0.4 W OF S/C RENEW TO 150 W/20 COPPER
63 NORLORNE RD	20 POLY	20 COPPER	5.43 WEL HSE	8.53>NNL NORLORNE	OPP S/C RENEW TO 150 W/20 COPPER
67 NORLORNE RD	20 POLY	20 COPPER	4.58 WEL HSE	22.84>NNL NORLORNE	0.5 E OF S/C RENEW TO 150 W/20 COPPER
71 NORLORNE RD	20 POLY	20 COPPER	5.12 EWL HSE	43.10>NNL NORLORNE	5.7 W OF S/C RENEW TO 150 W/20 COPPER
75 NORLORNE RD	20 POLY	20 COPPER	7.0 EWL HSE	57.98>NNL NORLORNE	2.2 W OF S/C RENEW TO 150 W/20 COPPER
83 NORLORNE RD	20 POLY	20 COPPER	5.84 EWL HSE	6.33>NNL SHELDRAKE	1.5 W OF S/C RENEW TO 150 W/20 COPPER
86 NORLORNE RD	20 POLY	20 COPPER	5.88 WEL HSE	7.18>NNL SHELDRAKE	1.8 W OF S/C RENEW TO 150 W/20 COPPER
87 NORLORNE RD	20 POLY	20 COPPER	7.0 WEL HSE	9.77>NNL SHELDRAKE	OPP S/C RENEW TO 150 W/20 COPPER
91 NORLORNE RD	20 POLY	20 COPPER	6.72 WEL HSE	26.49>NNL SHELDRAKE	0.7 W OF S/C RENEW TO 150 W/20 COPPER
95 NORLORNE RD	20 POLY	20 COPPER	7.01 WEL HSE	42.94>NNL SHELDRAKE	0.9 W OF S/C RENEW TO 150 W/20 COPPER
118 NORLORNE RD	20 POLY	20 COPPER	6.15 SNL HSE	6.52>NNL NORLORNE	1.1 N OF S/C RENEW TO 150 W/20 COPPER
119 NORLORNE RD	20 POLY	20 COPPER	4.85 NSL HSE	8.11>NNL NORLORNE	0.3 N OF S/C RENEW TO 150 W/20 COPPER
122 NORLORNE RD	20 POLY	20 COPPER	5.85 SNL HSE	21.23>NNL NORLORNE	3.7 N OF S/C RENEW TO 150 W/20 COPPER
123 NORLORNE RD	20 POLY	20 COPPER	6.65 SNL HSE	25.08>NNL NORLORNE	OPP S/C RENEW TO 150 W/20 COPPER
127 NORLORNE RD	20 POLY	20 COPPER	4.82 NSL HSE	41.11>NNL NORLORNE	1.7 S OF S/C RENEW TO 150 W/20 COPPER
131 NORLORNE RD	20 POLY	20 COPPER	4.28 SNL HSE	59.52>NNL NORLORNE	1.6 S OF S/C RENEW TO 150 W/20 COPPER
135 NORLORNE RD	20 POLY	20 COPPER	6.32 NSL HSE	41.94>NNL BARBARA	1.8 N OF S/C RENEW TO 150 W/20 COPPER
138 NORLORNE RD	20 POLY	20 COPPER	7.08 NSL HSE	34.46>NNL BARBARA	4.6 S OF S/C RENEW TO 150 W/20 COPPER
139 NORLORNE RD	20 POLY	20 COPPER	6.82 NSL HSE	24.90>NNL BARBARA	0.6 N OF S/C RENEW TO 150 W/20 COPPER
143 NORLORNE RD	20 POLY	20 COPPER	4.46 NSL HSE	10.76>NNL BARBARA	0.2 S OF S/C RENEW TO 150 W/20 COPPER
146 NORLORNE RD	20 POLY	20 COPPER	5.68 NSL HSE	4.97>NNL BARBARA	5.8 S OF S/C RENEW TO 150 W/20 COPPER
150 NORLORNE RD	20 POLY	20 COPPER	6.12 SNL HSE	7.24>NNL BARBARA	2.9 N OF S/C RENEW TO 150 W/20 COPPER
154 NORLORNE RD	20 POLY	20 COPPER	1.81 NSL HSE	3.55>NNL BARBARA	2.2 N OF S/C RENEW TO 150 W/20 COPPER
158 NORLORNE RD	20 POLY	20 COPPER	4.85 SNL HSE	24.02>NNL BARBARA	11.0 S OF S/C RENEW TO 150 W/20 COPPER
34 CASS ST	20 COPPER	20 COPPER	6.87 SNL HSE	14.74>NNL WATERHOUSE	0.1 S OF S/C RENEW TO 150 W/20 COPPER

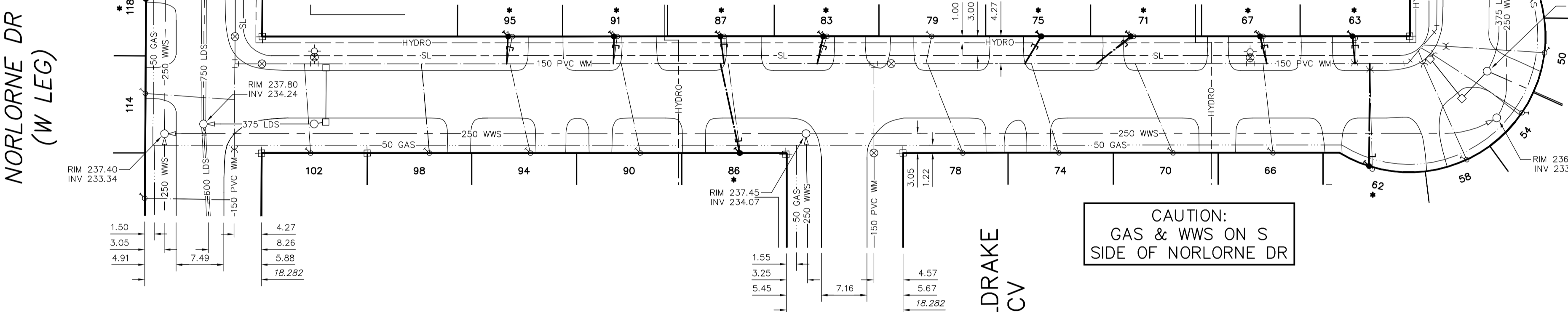
* - PLASTIC (POLY) SERVICE ON CITY SIDE
** - PREVIOUSLY FROZEN ON CITY SIDE

- CONSTRUCTION NOTES**
1. CONFIRM LOCATION OF ALL SERVICES IN THE FIELD.
 2. CONNECT ALL NEW SERVICES AT EXISTING CORP. LOCATIONS UNLESS OTHERWISE NOTED OR AS DIRECTED BY THE CONTRACT ADMINISTRATOR

NORLORNE DRIVE (S LEG)

CAUTION:
HYDRO & SL ON N
SIDE OF NORLORNE DR

FOR CONTINUATION
SEE B-B



CAUTION:
GAS & WWS ON S
SIDE OF NORLORNE DR

SHELDRAKE
CV

NORLORNE DR
(W LEG)

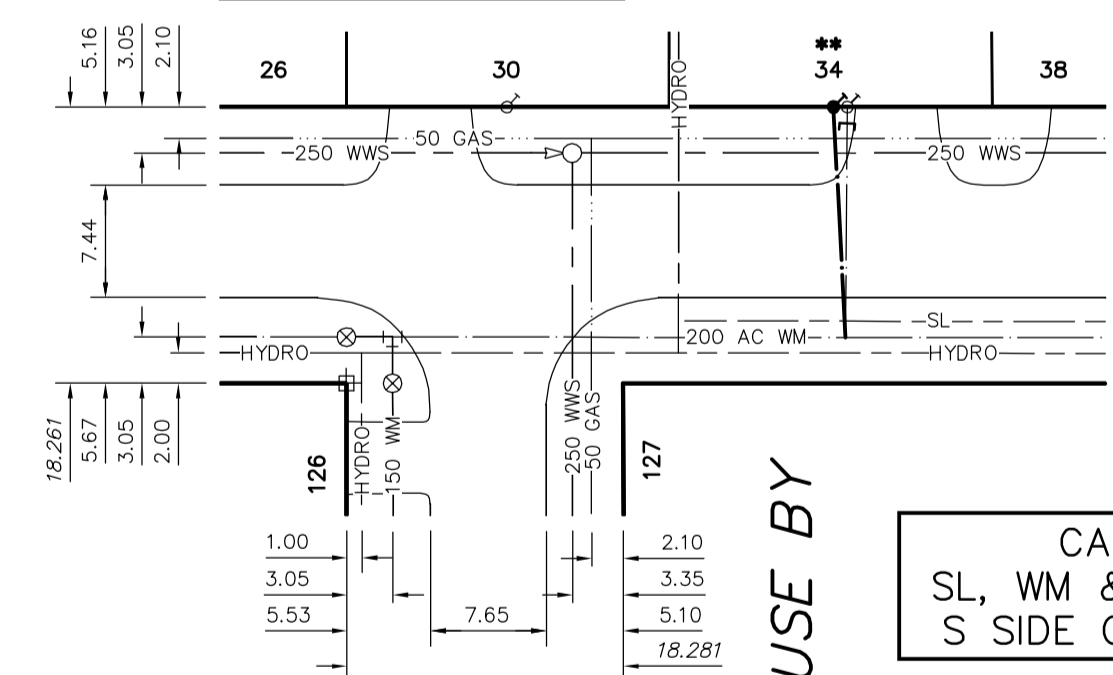
FOR CONTINUATION
SEE A-A

NORLORNE DR
(E LEG)

CASS STREET

CAUTION:
WWS & GAS ON S
SIDE OF CASS ST

APPROX. DEPTH TO WWS INVERT IS 3.3
m. CONTRACTOR TO VERIFY IN FIELD



CAUTION:
SL, WM & HYDRO ON
S SIDE OF CASS ST

NORLORNE DR
(S LEG)

FOR CONTINUATION
SEE B-B

CAUTION:
GAS, LDS & WWS ON E
SIDE OF NORLORNE DR

NORLORNE DRIVE (E LEG)

CAUTION:
HYDRO, SL & MTS ON N
SIDE OF NORLORNE DR

BARBARA
CR

TO BETSWORTH AVE



METRIC
WHOLE NUMBERS INDICATE MILLIMETRES
DECIMALIZED NUMBERS INDICATE METRES

WARNING
IF POWER EQUIPMENT OR EXPLOSIVES ARE TO BE USED FOR EXCAVATION ON THIS PROJECT THE CONTRACTOR MUST:
1) NOTIFY THE GAS COMPANY OF THE PROPOSED LOCATION OF EXCAVATION.
2) TAKE PRECAUTION TO AVOID DAMAGE TO GAS COMPANY INSTALLATIONS.
SEE PROVINCIAL REGULATION 210/72 FOR DETAILS

200 WM	WATERMAIN	200 WM	SL, HYDRO	150 WM	WATERMAIN	150 WM	LOCATION APPROVED	B.M. ELEV.	FIELD BOOK #:	CITY OF WINNIPEG WATER AND WASTE ENGINEERING DIVISION	ENGINEER'S SEAL ORIGINAL DRAWING SIGNED BY R.W. CARROLL 10/11/09	THE CITY OF WINNIPEG WATER AND WASTE DEPARTMENT 2011 WATER SERVICE REPLACEMENT PROGRAM, CONTRACT 10 AREA 1 NORLORNE DRIVE AND CASS STREET	SHEET 1 OF 6 CITY DRAWING NUMBER D-12202
525 LDS	LAND DRAINAGE SEWER	525 LDS	TRAFFIC SIGNALS	300 LDS	LAND DRAINAGE SEWER	300 LDS	UNDERGROUND STRUCTURES	POSTED TO LBIS	DESIGNED BY: RC				
375 WWS	WASTEWATER SEWER	375 WWS	SURVEY BAR	250 WWS	WASTEWATER SEWER	250 WWS	DATE		DRAWN BY: CJH	APPROVED BY: RC	FILENAME: D-12202.dwg		
○	MANHOLE	●	FENCE	⊙	PROFILE	⊙	NOTE:	HOR. SCALE: 1:500	RELEASED FOR CONSTRUCTION	DATE	PLOT DATE: 2010 11 09		
□	CATCH BASIN	■	POLE - HYDRO, MTS	—	GROUND ABOVE PIPE	—	LOCATION OF UNDERGROUND STRUCTURES AS SHOWN ARE BASED ON THE BEST INFORMATION AVAILABLE BUT NO GUARANTEE IS GIVEN THAT ALL EXISTING UTILITIES ARE SHOWN OR THAT THE GIVEN LOCATIONS ARE EXACT. CONFIRMATION OF EXISTENCE AND EXACT LOCATION OF ALL SERVICES MUST BE OBTAINED FROM THE INDIVIDUAL UTILITIES BEFORE PROCEEDING WITH CONSTRUCTION.	VERTICAL					
▽	CURB INLET	▼	GUY ANCHOR	⊖	DITCH (NORTH & WEST)	⊖		NO. REVISIONS	DATE	BY			
△	REDUCER	◀	LIGHT STANDARD	⊖	DITCH (SOUTH & EAST)	⊖							
X	COUPLER	X	TREE	⊖	GUTTER (NORTH & WEST)	⊖							
⊖	ANODE	⊖	LEGEND-PLAN	⊖	GUTTER (SOUTH & EAST)	⊖							
—	EXISTING	—	PROPOSED	—	EXISTING	—							