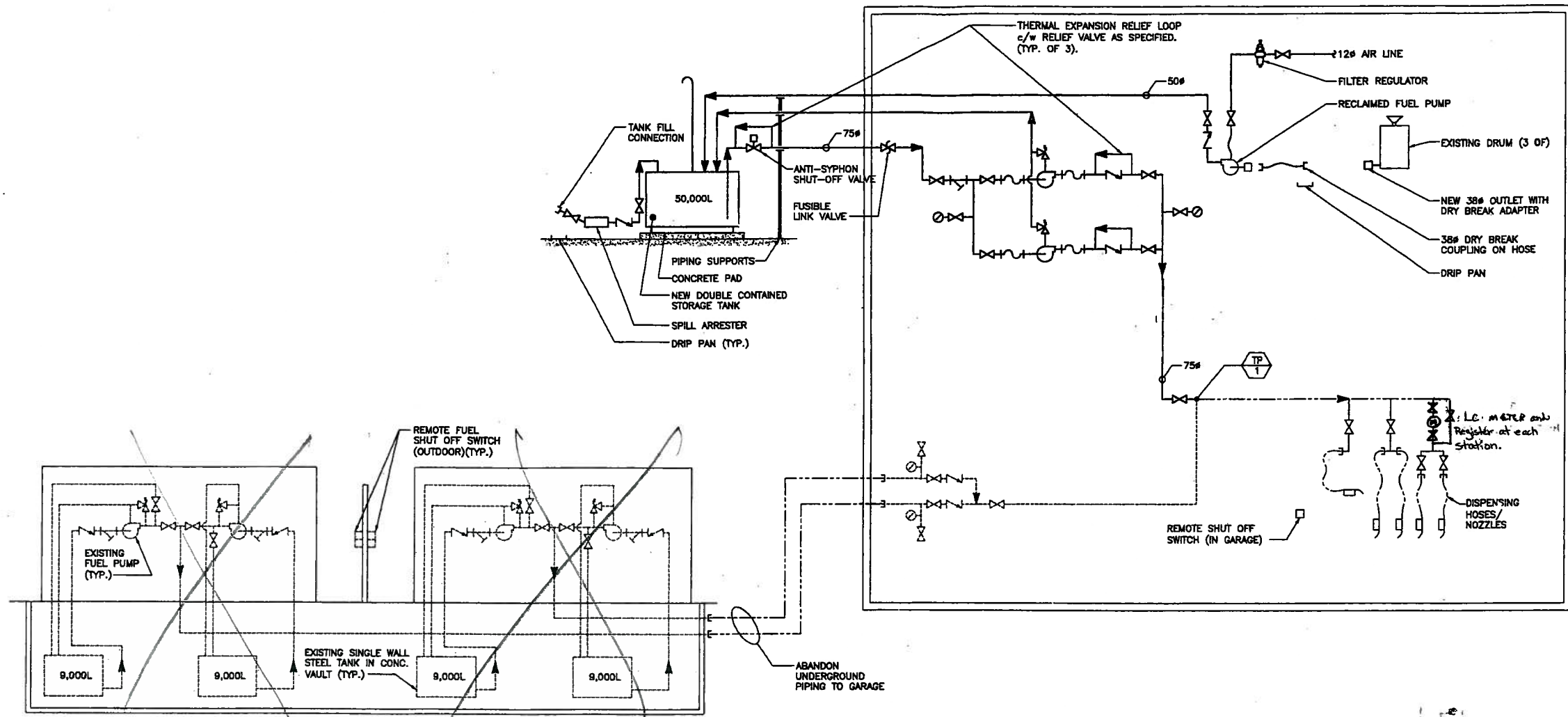
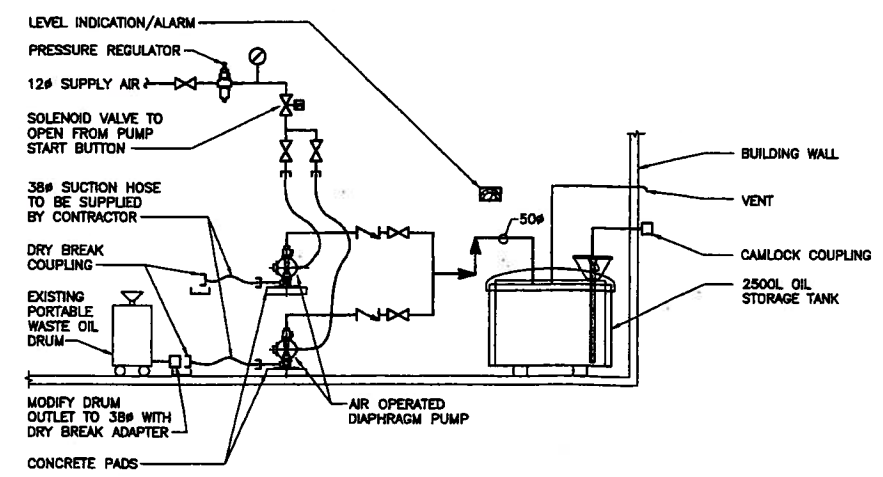


LEGEND:

- NEW
- - - EXISTING TO REMAIN
- - - EXISTING TO BE REMOVED
- ☒ CHECK VALVE
- ☒ EMERGENCY SHUTOFF VALVE
- ☒ FUSIBLE LINK VALVE
- ☒ PRESSURE RELIEF VALVE
- ☒ STRAINER
- ☒ VALVE (NORMALLY CLOSED)
- ☒ VALVE (NORMALLY OPEN)
- ☒ SOLENOID VALVE
- ☒ PRESSURE GAUGE
- ☒ METER
- ☒ PUMP
- ☒ FLOW DIRECTION
- ☒ HOSE CONNECTION
- ☒ CAP
- ☒ REDUCER
- ☒ FLEXIBLE CONNECTION
- ☒ TIE-IN POINT



1 DIESEL FUEL SYSTEM
N.T.S.



2 WASTE OIL SYSTEM
N.T.S.

J.A. Robinson Pump Service Ltd.
APPROVED
By: *J. Robinson* Date: 04/21/05
As built drawing - this drawing has been revised to show mechanical systems as installed.



0 ISSUED FOR TENDER			07.04.05	LWS
NO.	DESCRIPTION	DATE	ISSUED BY	
REVISIONS/ISSUE				
<small>THE CONTENT OF THIS DOCUMENT IS NOT INTENDED FOR THE USE OF, NOR IS IT INTENDED TO BE RELIED UPON BY ANY PERSON, FIRM OR CORPORATION OTHER THAN THE CLIENT AND WARDROP ENGINEERING INC. WARDROP ENGINEERING DOES NOT ASSUME RESPONSIBILITY TO CHECK PARTS OR MATERIALS OR HEAVY SUPPLIED BY SUCH THIRD PARTY ARISING FROM USE OF THIS DOCUMENT BY THEM, WITHOUT THE EXPRESS WRITTEN AUTHORITY OF WARDROP ENGINEERING INC. THIS DOCUMENT IS SUBJECT TO FEDERAL RESTRICTIONS IMPOSED BY THE CONTRACT BETWEEN THE CLIENT AND WARDROP ENGINEERING INC. AND THESE PARTIES' PERMISSION MUST BE OBTAINED BEFORE THIS DOCUMENT IS REPRODUCED IN ANY MANNER OR FOR ANY OTHER PURPOSE.</small>				
CLIENT				
CITY OF WINNIPEG TRANSIT DEPARTMENT				
WARDROP Engineering Inc.				
PROJECT NAME PETROLEUM STORAGE AND HANDLING SYSTEMS REPLACEMENT				
DRAWING DESCRIPTION MAIN STREET FACILITY MECHANICAL - FLOW SCHEMATICS				
DESIGNED BY:	DRAWN BY:	CHECKED BY:		
L.S.	D.D.			
APPROVED BY:				
SCALE:	AS NOTED	DATE:	07.01.15	
DRAWING NO.	0729720100-DWG-M0001			REV. 0