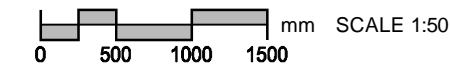
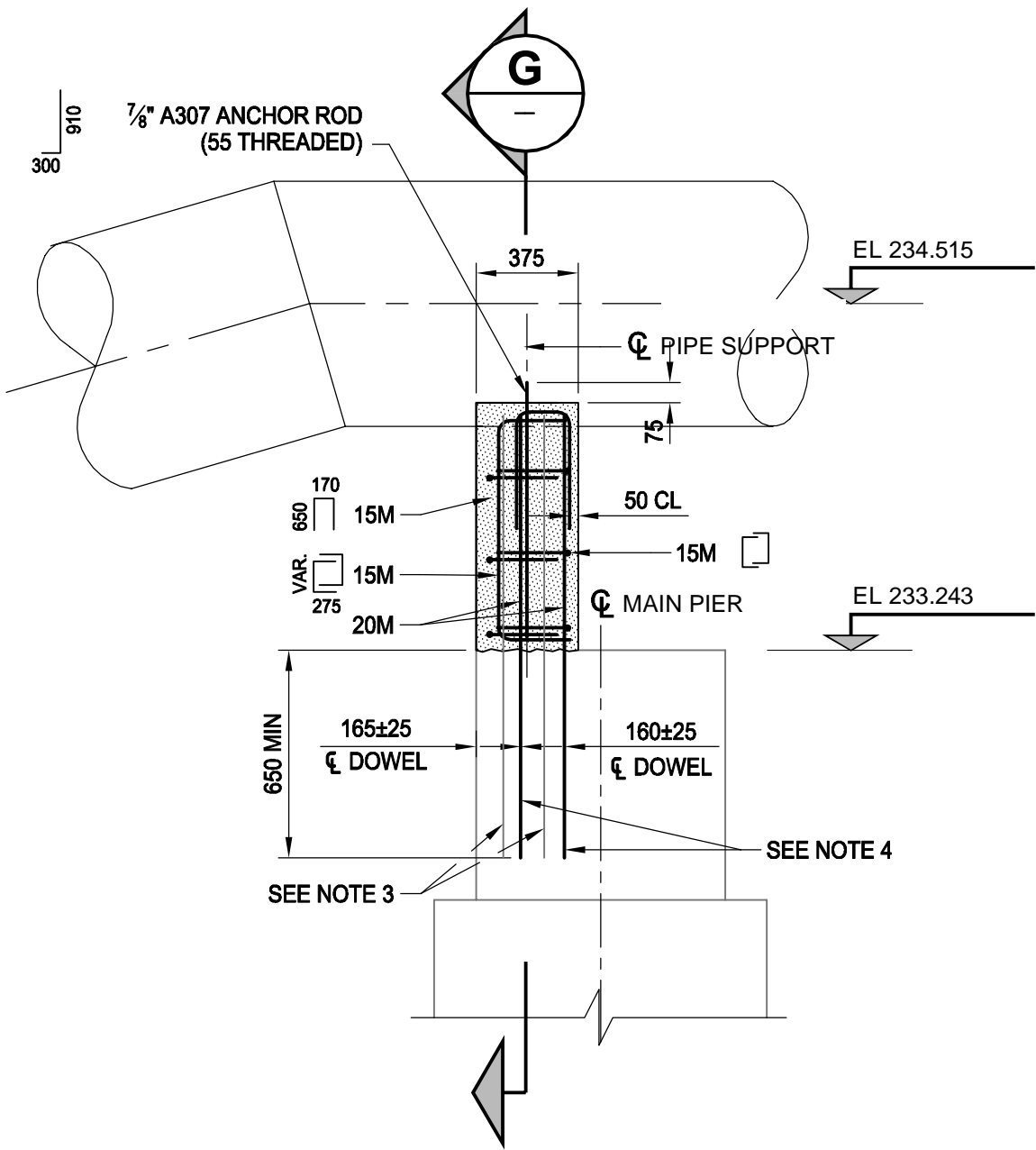


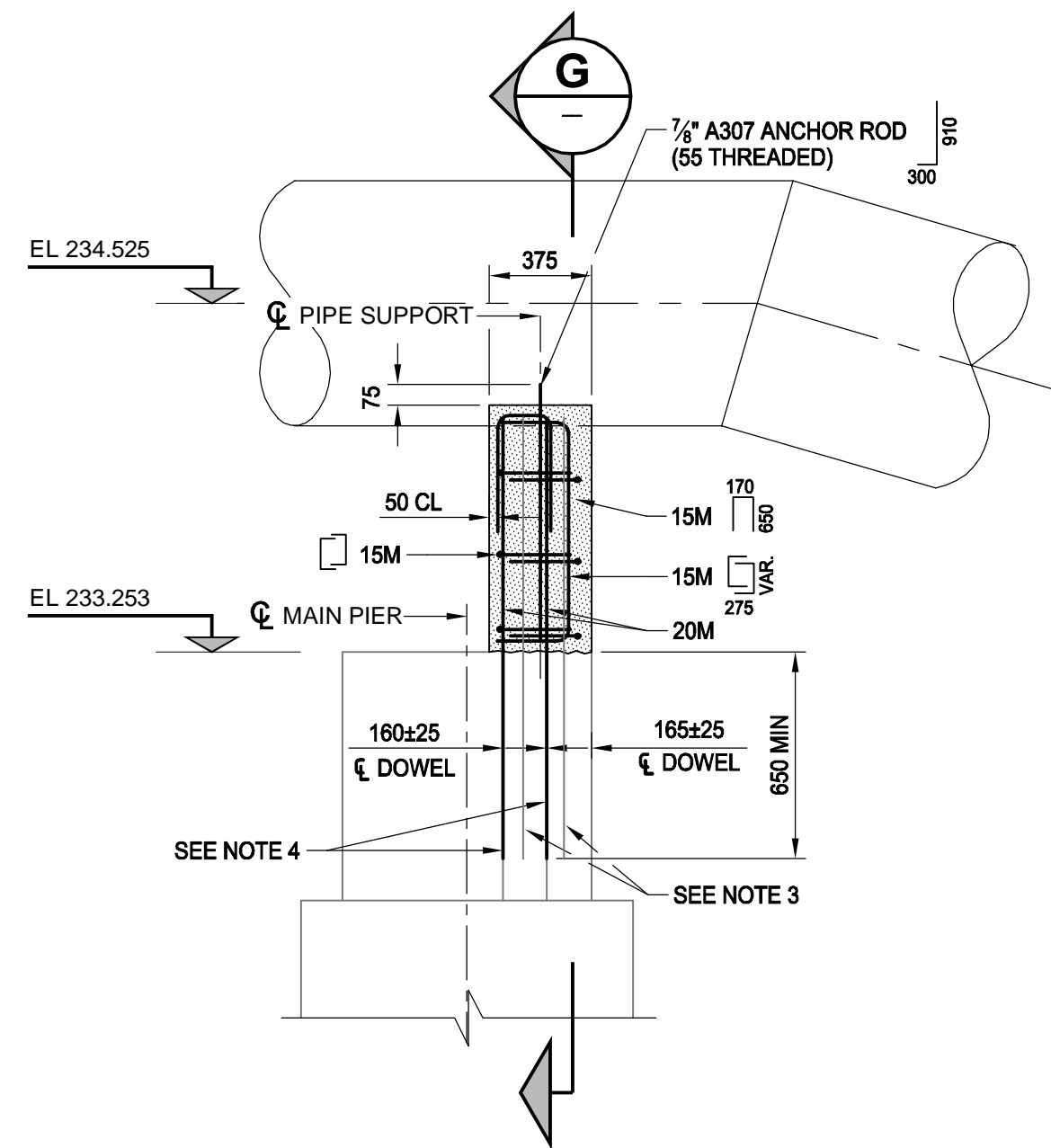
TYPICAL MAIN PIER ELEVATION



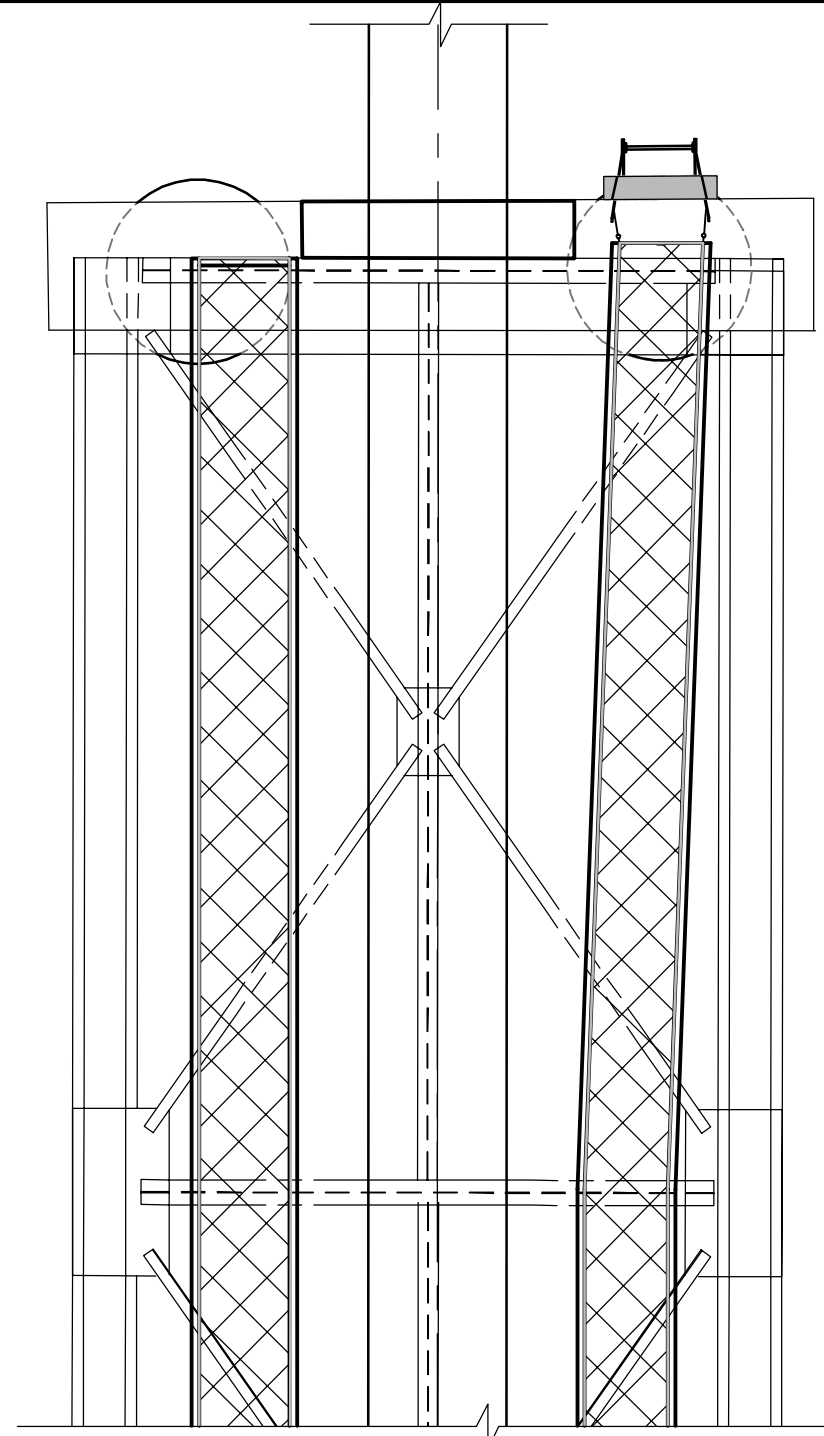
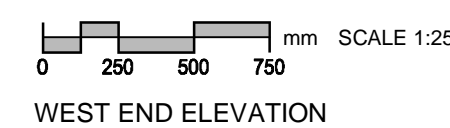
AT SU2 & SU3



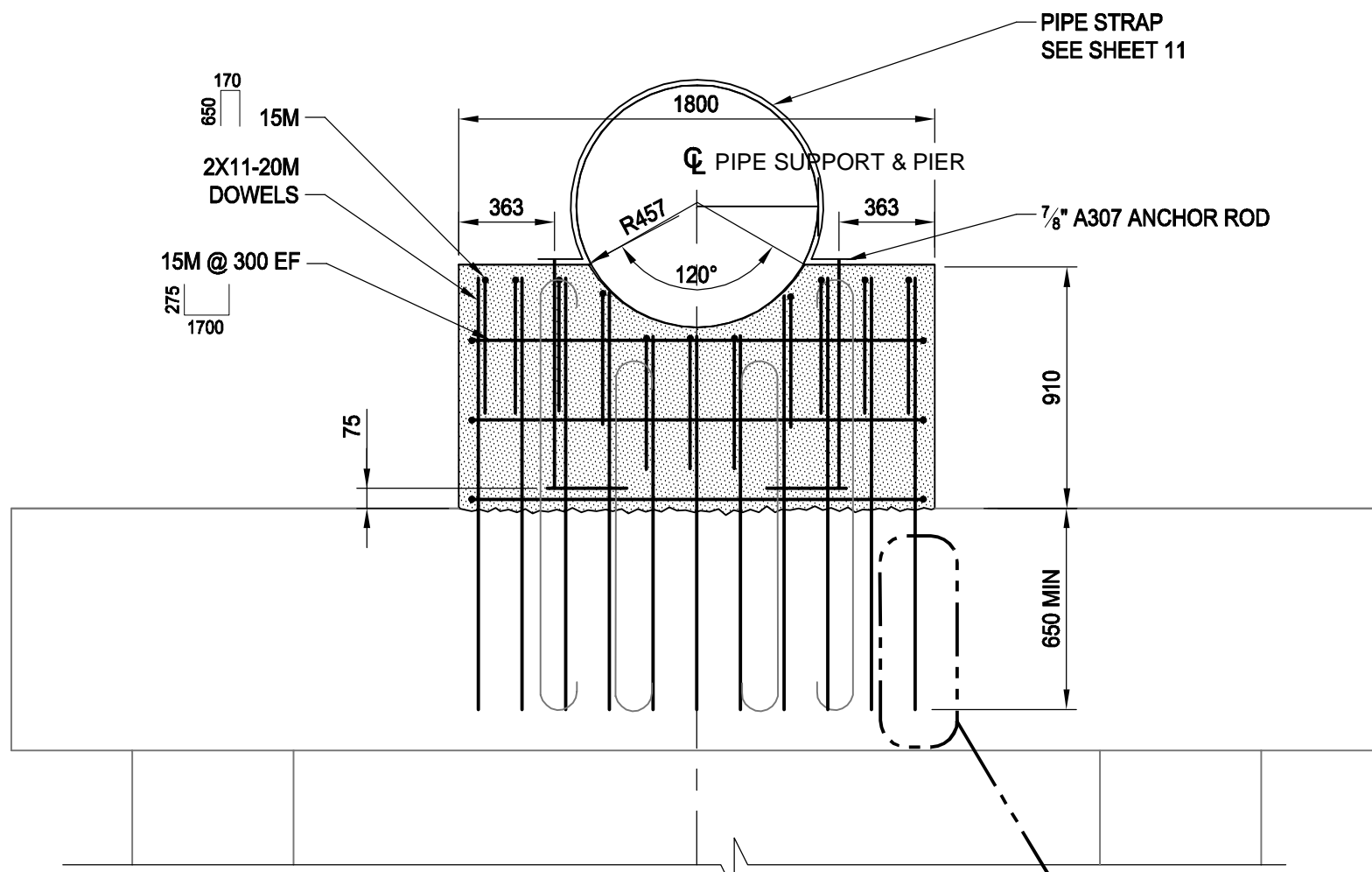
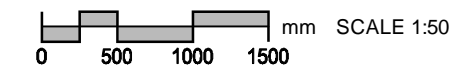
MAIN PIER SU2 WEST END ELEVATION



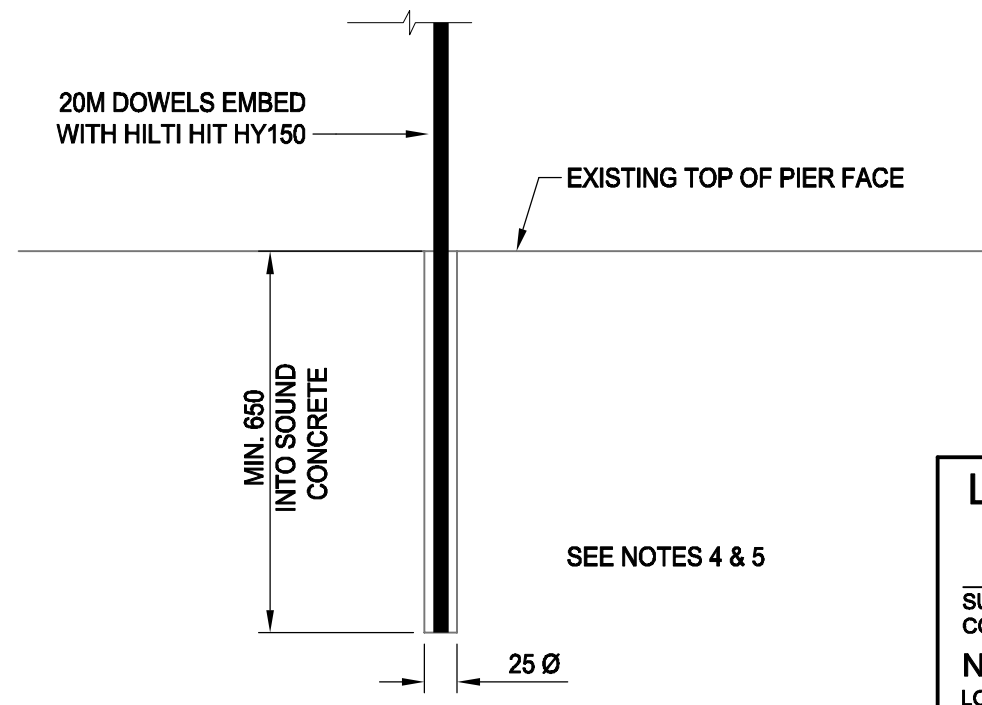
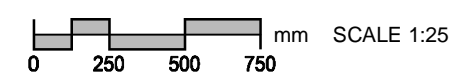
MAIN PIER SU3 WEST END ELEVATION



PLAN OF WALKWAY AT SU2

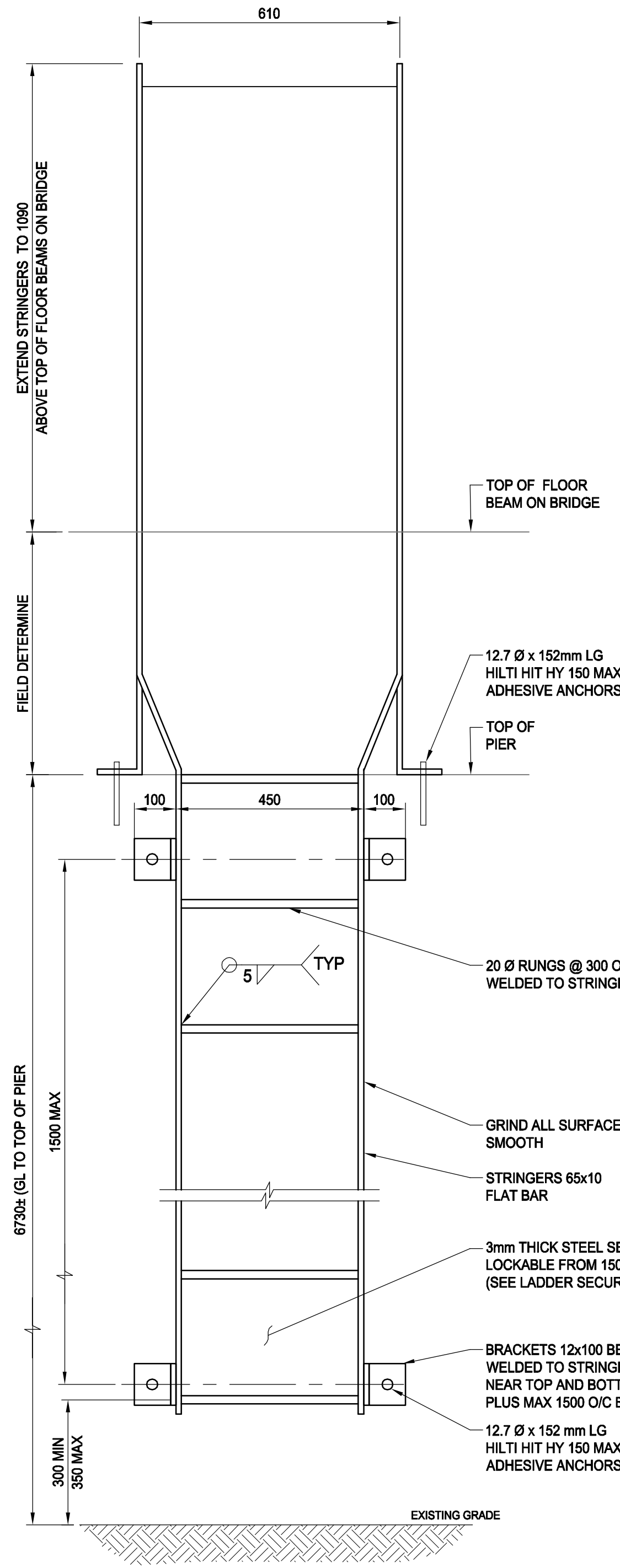
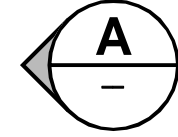


SECTION G



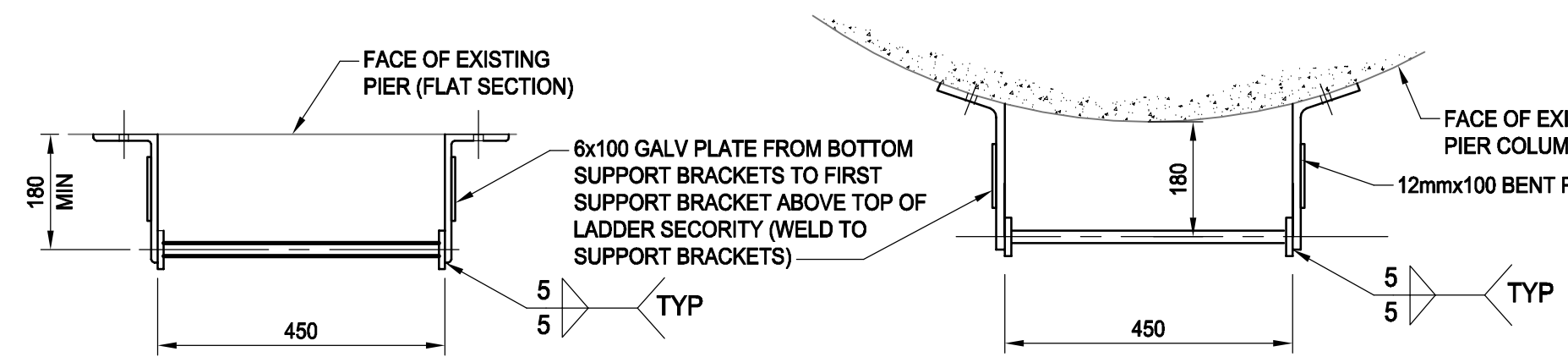
DETAIL 1

SCALE: NTS

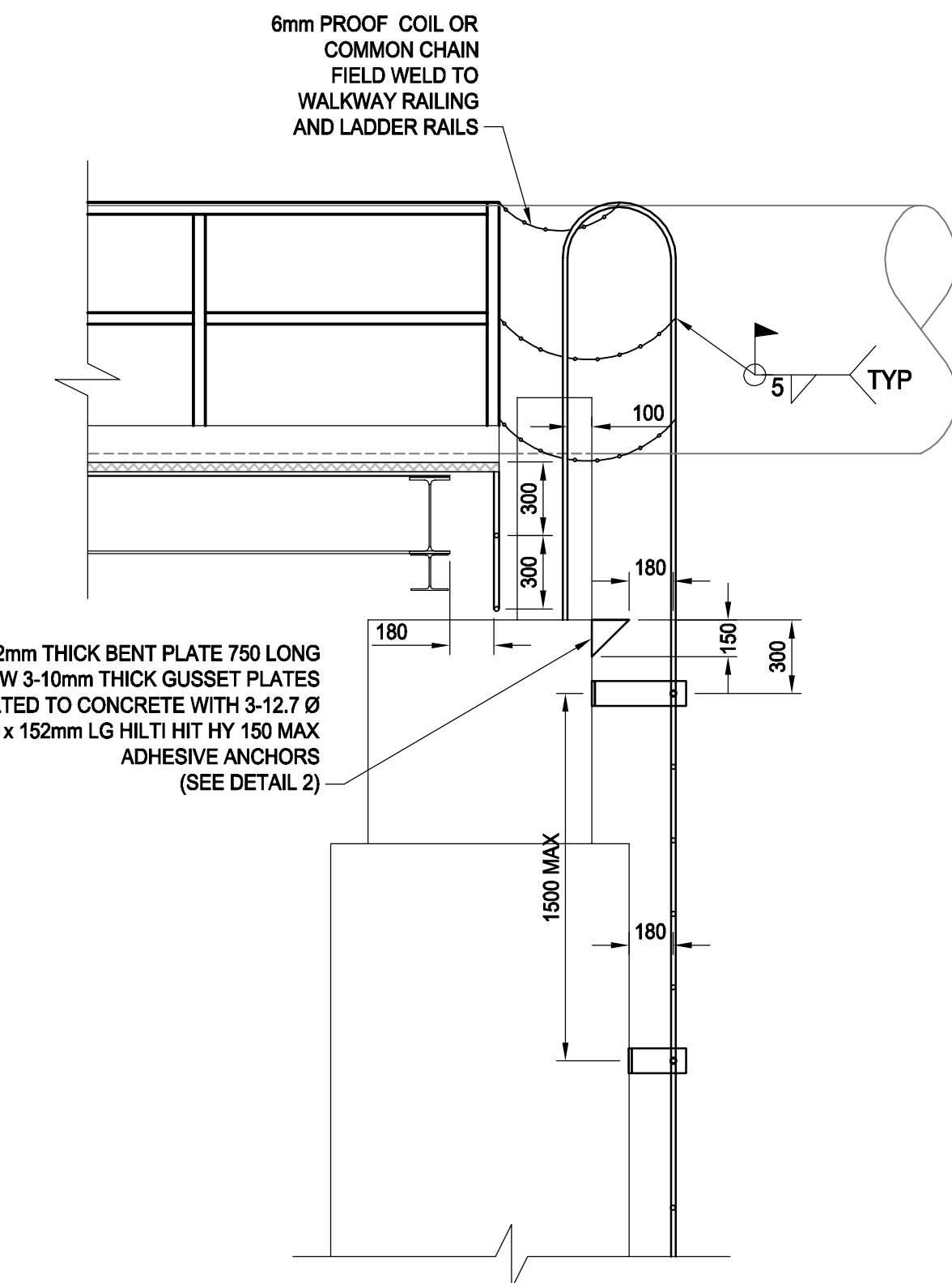
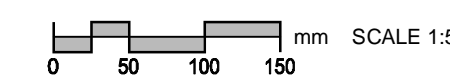


STEEL LADDER DETAILS

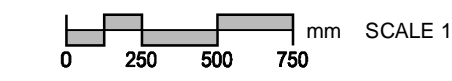
SCALE: NTS ALL MATERIAL TO BE HOT DIPPED GALVANIZED



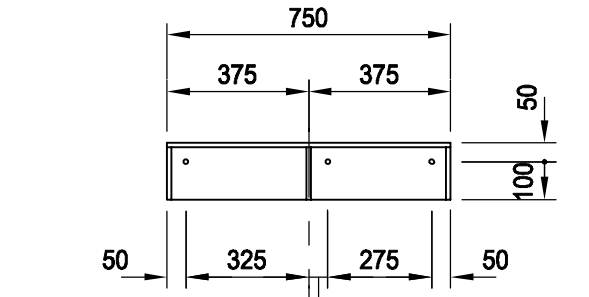
SECTION H



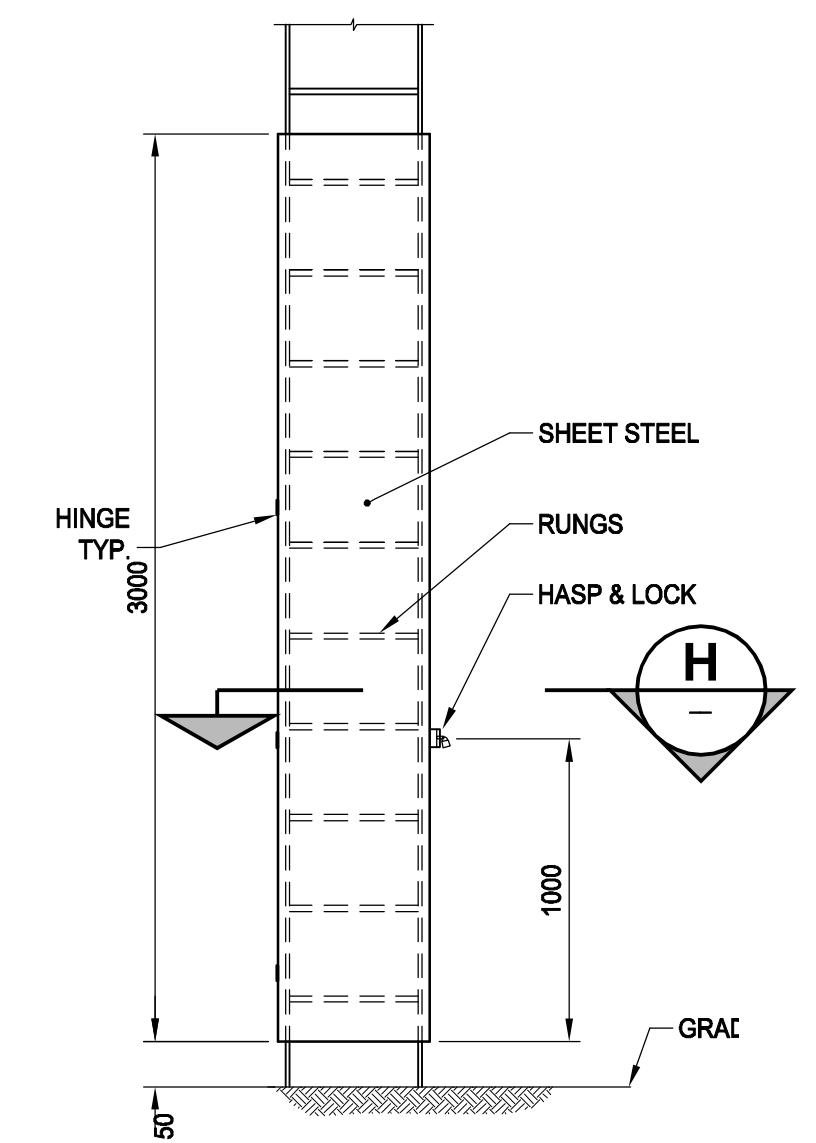
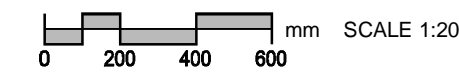
ELEVATION A



- NOTES:
- ALL CONCRETE SHALL BE $f_c' = 35 \text{ MPa}$ AT 28 DAYS DESIGNED FOR C-1 EXPOSURE.
 - ALL REINFORCING STEEL SHALL HAVE A 50±10mm CLEAR COVER UNLESS NOTED OTHERWISE.
 - CUT THE EXISTING REINFORCING DURING EXISTING PIPE SADDLE REMOVAL.
 - ANCHOR DOWELS AT MINIMUM OF 50mm OFFSET FROM EACH OF EXISTING TRANSVERSE REINFORCING. INSTALL DOWELS IN ACCORDANCE WITH MANUFACTURER'S INSTRUCTIONS. HOLES MUST BE DRILLED WITH HILTI ROTARY HAMMER DRILLS OR IF CORE DRILLED THEY MUST BE CONDITIONED WITH HILTI CONDITIONING BITS.
 - THE CHAINS SHALL BE LONG ENOUGH TO ALLOW A 200mm LONGITUDINAL MOVEMENT OF THE BRIDGE.

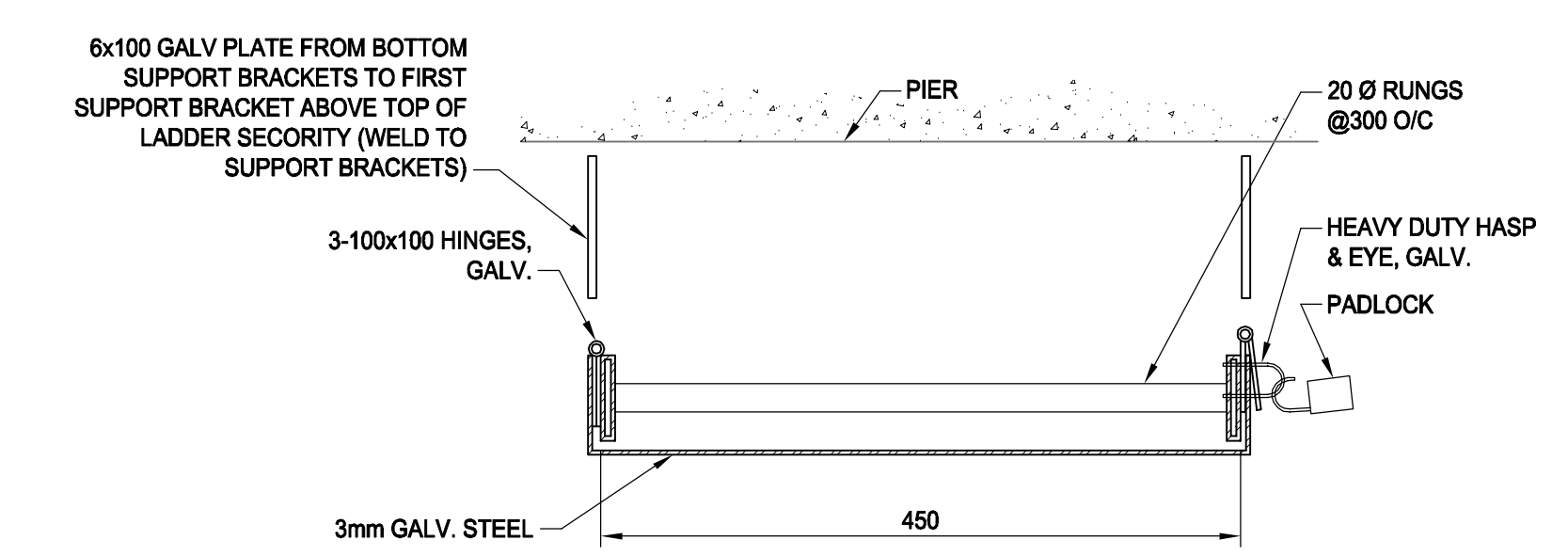


DETAIL 2

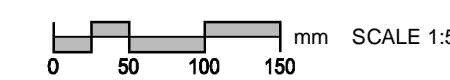


LADDER SECURITY

SCALE: NTS



SECTION H



NOTE: REFER TO GENERAL NOTES ON SHEETS 6 AND 7

BID OPPORTUNITY NO. 854-2010

LOCATION APPROVED UNDERGROUND STRUCTURES

SUPR. U/G STRUCTURES COMMITTEE	DATE
NOTE: LOCATION OF UNDERGROUND STRUCTURES AS SHOWN ARE BASED ON THE BEST INFORMATION AVAILABLE. BUT NO GUARANTEE IS GIVEN THAT ALL EXISTING UTILITIES ARE SHOWN OR THAT THE GIVEN LOCATIONS ARE EXACT. CONFIRMATION OF EXISTENCE AND EXACT LOCATION OF ALL SERVICES MUST BE OBTAINED FROM THE INDIVIDUAL UTILITIES BEFORE PROCEEDING WITH CONSTRUCTION.	

DESIGNED BY	FT/ARB	CHECKED BY	SBB/KC
DRAWN BY	DJH	APPROVED BY	EBL
HOR. SCALE	AS NOTED	RELEASED FOR CONSTRUCTION	K. Zurek
VERT. SCALE	AS NOTED	DATE	May 11/11

PROFESSIONAL'S SEAL

REVISION '0'
Issued For Construction
Sealed By:
S. B. BISWANGER
May 9 2011

CONSULTANT DRAWING NO.
D265-230-02_01-S-4005_RX.dwg

THE CITY OF WINNIPEG
WATER AND WASTE DEPARTMENT

REHABILITATION / REPLACEMENT OF THE
MIDTOWN FEEDERMAIN AT THE
ASSINBOINE RIVER

STRUCTURAL
CONCRETE PIER SU2 & SU3 WORK

SHEET 10 OF 18
CITY DRAWING NUMBER
D-12236
REV 0