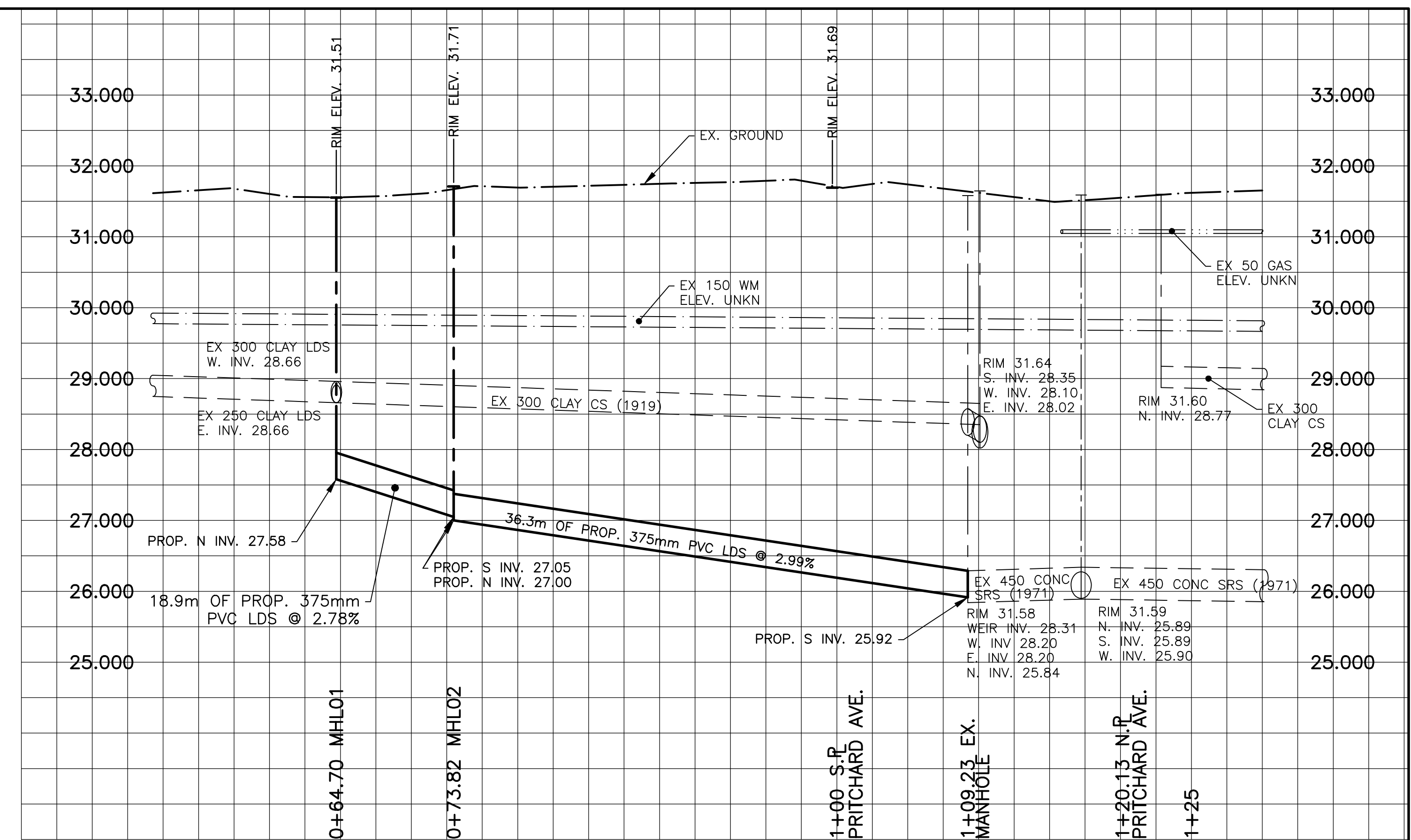
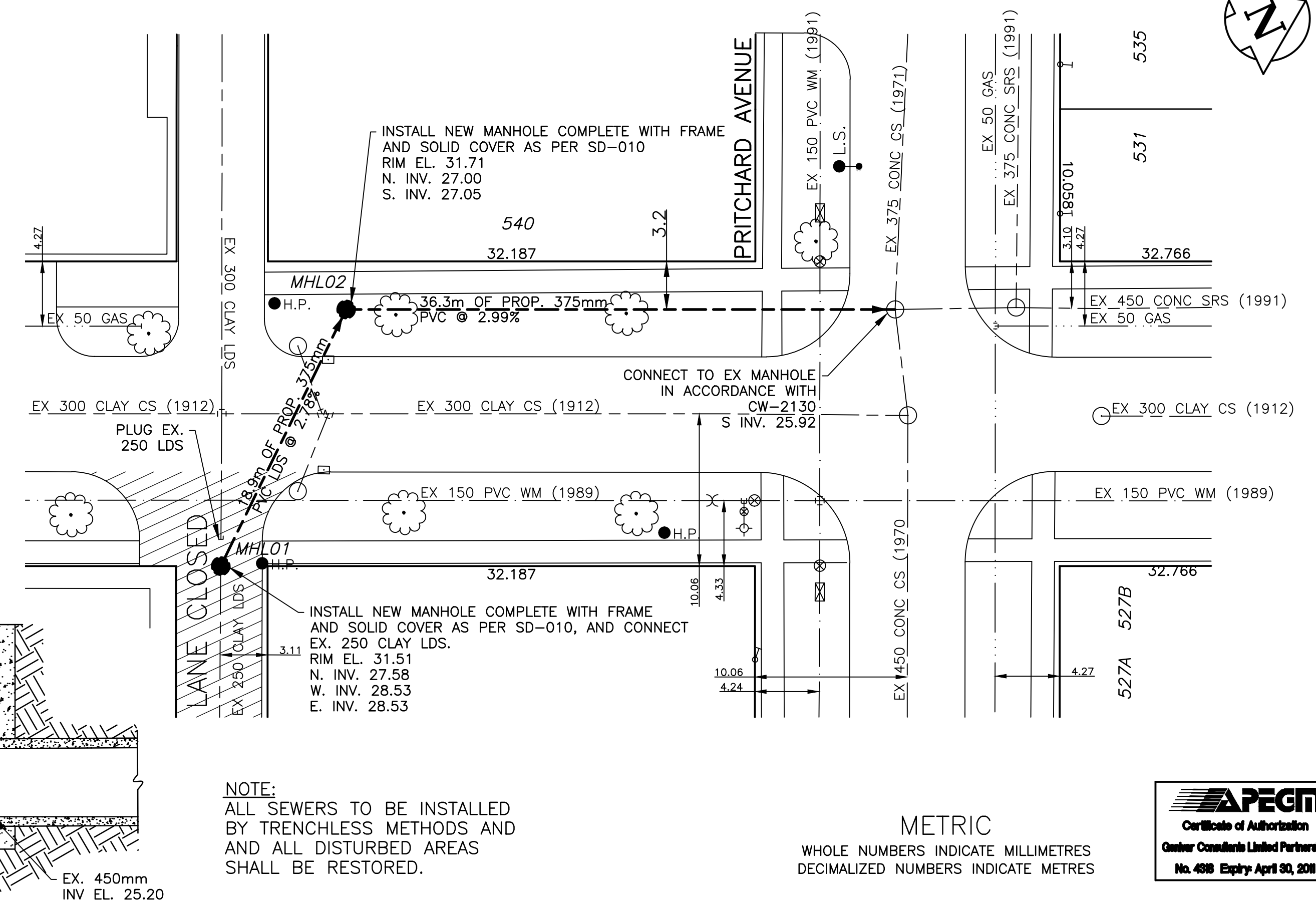
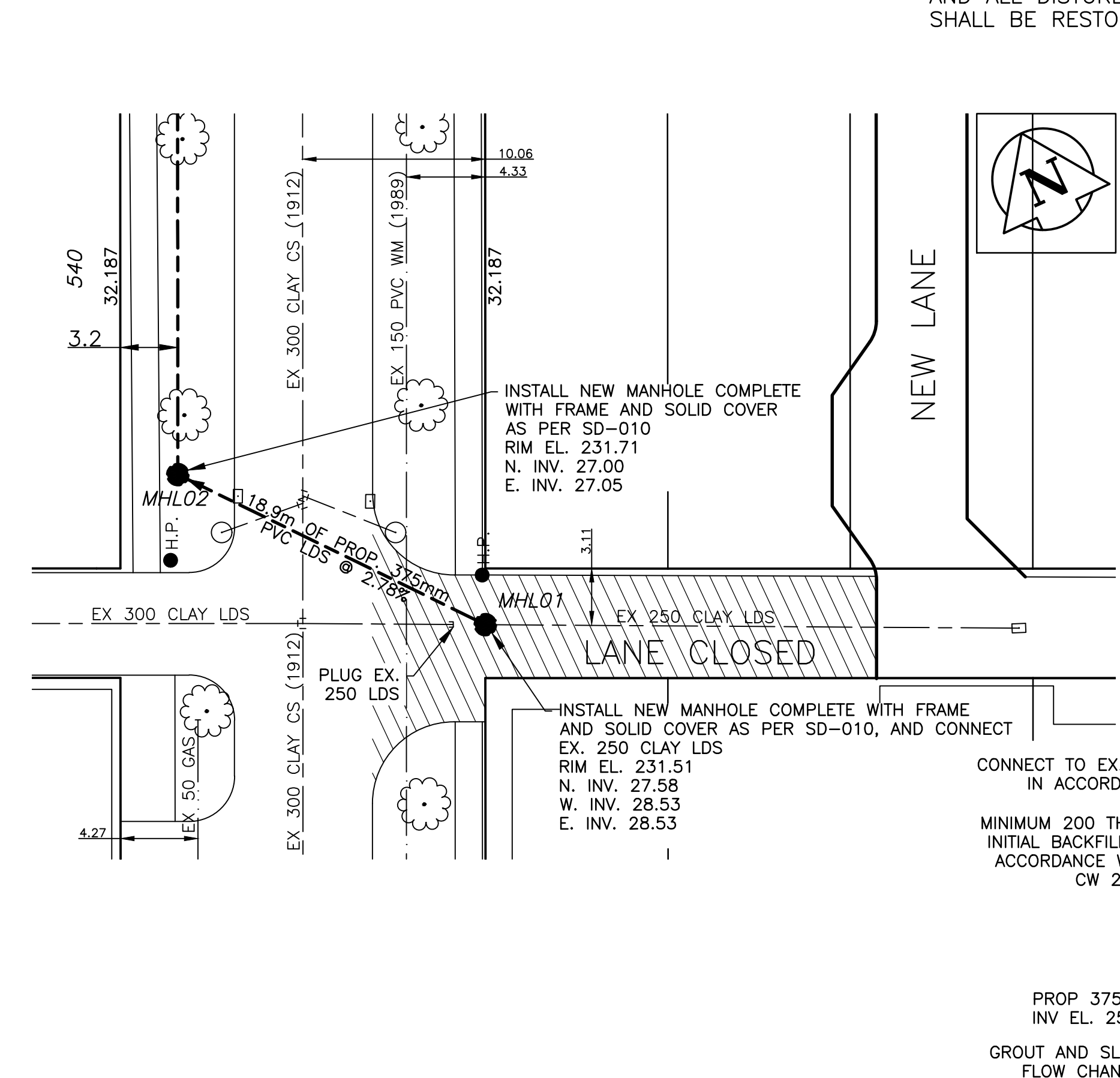


CHAINAGE ALONG NORTH PROPERTY LINE OF SELKIRK/Pritchard ALLEY



CHAINAGE ALONG WEST PROPERTY LINE OF ANDERSON STREET

NOTE:  
ALL SEWERS TO BE INSTALLED BY TRENCHLESS METHODS AND ALL DISTURBED AREAS SHALL BE RESTORED.



NOTE:  
ALL SEWERS TO BE INSTALLED BY TRENCHLESS METHODS AND ALL DISTURBED AREAS SHALL BE RESTORED.

METRIC  
WHOLE NUMBERS INDICATE MILLIMETRES  
DECIMALIZED NUMBERS INDICATE METRES



EXISTING	LEGEND - PLAN	PROPOSED	EXISTING	LEGEND - PLAN	PROPOSED	EXISTING	LEGEND - PROFILE	PROPOSED
—	WATERMAIN	—	—	REDUCER	—	—	150mm W.W.	—
—	HYDRANT VALVE	—	—	PLUG	—	—	300mm L.D.S.	—
—	LAND DRAINAGE SEWER	—	—	TRAFFIC SIGNAL	—	—	250mm W.W.S.	—
—	WASTE WATER SEWER	—	—	GAS	—	—	300mm L.D.S.	—
—	MANHOLE	—	—	HYDRO	—	—	250mm W.W.S.	—
—	CATCH BASIN	—	—	M.T.S.	—	—	—	—
—	CURB STOP	—	—	C.B. LEAD	—	—	—	—
—	TEE	—	—	SURVEY BAR	—	—	—	—
—	BEND	—	—	TREE	—	—	—	—
—	ANODE	—	—	HYDRO POLE	—	—	—	—
—		—	—	LAMP STANDARD	—	—	—	—

LOCATION APPROVED

SUPV. U/G STRUCTURES DATE COMMITTEE

NOTE:  
LOCATION OF UNDERGROUND STRUCTURES AS SHOWN ARE BASED ON THE BEST INFORMATION AVAILABLE BUT NO GUARANTEE IS GIVEN THAT ALL EXISTING UTILITIES ARE SHOWN OR THAT THE GIVEN LOCATIONS ARE EXACT. CONFIRMATION OF EXISTENCE AND EXACT LOCATION OF ALL SERVICES MUST BE OBTAINED FROM THE INDIVIDUAL UTILITIES BEFORE PROCEEDING WITH CONSTRUCTION.

**GENIVAR**  
10 PRAIRIE WAY WINNIPEG, MANITOBA R2J 3J8  
PH: (204)-477-6650 FAX: (204)-474-2864

DESIGNED BY: R.H. CHECKED BY: B.H.  
DRAWN BY: R.H. APPROVED BY: I.McK.  
HOR. SCALE: 1:250 RELEASED FOR CONSTRUCTION  
VERT. SCALE: 1:50  
DATE: NOVEMBER, 2010

ENGINEERS SEAL  
**McKINNON**  
REGISTERED PROFESSIONAL ENGINEER

CONSULTANT DRAWING NO.  
101-15472-00

THE CITY OF WINNIPEG  
WATER AND WASTE DEPARTMENT

LAND DRAINAGE SEWER IMPROVEMENTS  
ANDREWS STREET AT PRITCHARD AVENUE  
FROM MANHOLE MHL01 AT STATION 0+64.70  
TO EX. MANHOLE AT STATION 1+09.23

SHEET 1 OF 1  
CITY DRAWING NO. LD-5554