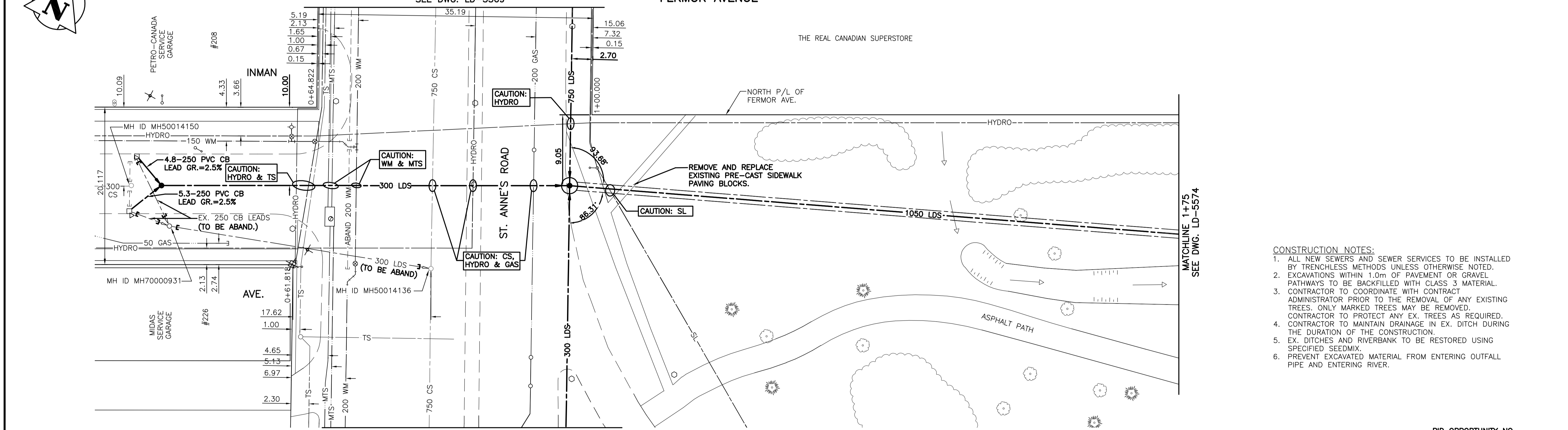


0+75 1+00 1+25 1+50 1+75



**WARNING**  
IF POWER EQUIPMENT OR EXPLOSIVES ARE TO BE USED FOR EXCAVATION ON THIS PROJECT THE CONTRACTOR MUST:  
1) NOTIFY THE GAS COMPANY OF THE PROPOSED LOCATION OF EXCAVATION.  
2) TAKE PRECAUTION TO AVOID DAMAGE TO GAS COMPANY INSTALLATIONS.  
SEE PROVINCIAL REGULATION 140/92 FOR DETAILS

**METRIC**  
WHOLE NUMBERS INDICATE MILLIMETRES  
DECIMALIZED NUMBERS INDICATE METRES

**FOR CONTINUATION SEE DWG. LD-5569**

**FOR CONTINUATION SEE DWG. LD-5569**

**NOTE:**  
STATIONING IS ALONG N.P.

BENCH MARK: S.W. Cor. St. Mary's Rd. & Glenview Ave., Tblt. in 7.6 m Conc. pile, 6 m N. of S.L. of Glenview Ave. & 0.6 m W. of W.L. of St. Mary's Rd.

**CONSTRUCTION NOTES:**  
1. ALL NEW SEWERS AND SEWER SERVICES TO BE INSTALLED BY TRENCHLESS METHODS UNLESS OTHERWISE NOTED.  
2. EXCAVATIONS WITHIN 1.0m OF PAVEMENT OR GRAVEL PATHWAYS TO BE BACKFILLED WITH CLASS 3 MATERIAL.  
3. CONTRACTOR TO COORDINATE WITH CONTRACT ADMINISTRATOR PRIOR TO THE REMOVAL OF ANY EXISTING TREES. ONLY MARKED TREES MAY BE REMOVED. CONTRACTOR TO PROTECT ANY EX. TREES AS REQUIRED.  
4. CONTRACTOR TO MAINTAIN DRAINAGE IN EX. DITCH DURING THE DURATION OF THE CONSTRUCTION.  
5. EX. DITCHES AND RIVERBANK TO BE RESTORED USING SPECIFIED SEEDMIX.  
6. PREVENT EXCAVATED MATERIAL FROM ENTERING OUTFALL PIPE AND ENTERING RIVER.

**WARNING**  
IF POWER EQUIPMENT OR EXPLOSIVES ARE TO BE USED FOR EXCAVATION ON THIS PROJECT THE CONTRACTOR MUST:  
1) NOTIFY THE GAS COMPANY OF THE PROPOSED LOCATION OF EXCAVATION.  
2) TAKE PRECAUTION TO AVOID DAMAGE TO GAS COMPANY INSTALLATIONS.  
SEE PROVINCIAL REGULATION 140/92 FOR DETAILS

150 WM	WATERMAIN	150 WM	HYDRO	150 WM	WATERMAIN	150 WM	LOCATION APPROVED UNDERGROUND STRUCTURES	B.M. 54-011 ELEV. 231.851 m	<b>Stantec Consulting Ltd.</b> 905 Waverley Street, Winnipeg, Manitoba Tel 204-489-5900 Fax 204-453-9012	ENGINEER'S SEAL	<b>THE CITY OF WINNIPEG</b> WATER AND WASTE DEPARTMENT ENGINEERING DIVISION <b>FERMOR AVE. / INMAN AVE.</b> 1ST MH W OF ST. ANNE'S RD TO 77.5 E OF MH AT ST. ANNE'S RD MAGER COMBINED SEWER DISTRICT SEWER SEPARATION CONTRACT NO. 3	
300 LDS	LAND DRAINAGE SEWER	300 LDS	M.T.S.	300 LDS	LAND DRAINAGE SEWER	300 LDS	DATE	DESIGNED BY: J.C.		CHECKED BY: H.K.		SHEET 5 OF 12
250 WWS	WASTE WATER SEWER	250 WWS	CONCRETE	250 WWS	WASTE WATER SEWER	250 WWS	SUPV. U/G STRUCTURES COMMITTEE	DRAWN BY: D.M.L.		APPROVED BY: L.C.		CAD FILE DRAWING NUMBER 11890c-237-712.dwg
300 LDS	LAND DRAINAGE SEWER	300 LDS	ASPHALT	300 LDS	LAND DRAINAGE SEWER	300 LDS	NOTE: LOCATION OF UNDERGROUND STRUCTURES AS SHOWN ARE BASED ON THE BEST INFORMATION AVAILABLE BUT NO GUARANTEE IS GIVEN THAT ALL EXISTING UTILITIES ARE SHOWN OR THAT THE GIVEN LOCATIONS ARE EXACT. CONFIRMATION OF EXISTENCE AND EXACT LOCATION OF ALL SERVICES MUST BE OBTAINED FROM THE INDIVIDUAL UTILITIES BEFORE PROCEEDING WITH CONSTRUCTION.	HOR. SCALE: 1:250 VERTICAL: 1:50		RELEASED FOR CONSTRUCTION:		CITY DRAWING NUMBER LD-5573
250 WWS	WASTE WATER SEWER	250 WWS	SIDEWALK	250 WWS	WASTE WATER SEWER	250 WWS	NO. REVISIONS	DATE	DATE	CONSULTANT DRAWING NO. C-237		
150 WM	WATERMAIN	150 WM	PROPERTY LINE	150 WM	WATERMAIN	150 WM	DATE	DATE	DATE			
300 LDS	LAND DRAINAGE SEWER	300 LDS	SURVEY BAR	300 LDS	LAND DRAINAGE SEWER	300 LDS	DATE	DATE	DATE			
250 WWS	WASTE WATER SEWER	250 WWS	DITCH	250 WWS	WASTE WATER SEWER	250 WWS	DATE	DATE	DATE			
150 WM	WATERMAIN	150 WM	ELEVATION	150 WM	WATERMAIN	150 WM	DATE	DATE	DATE			