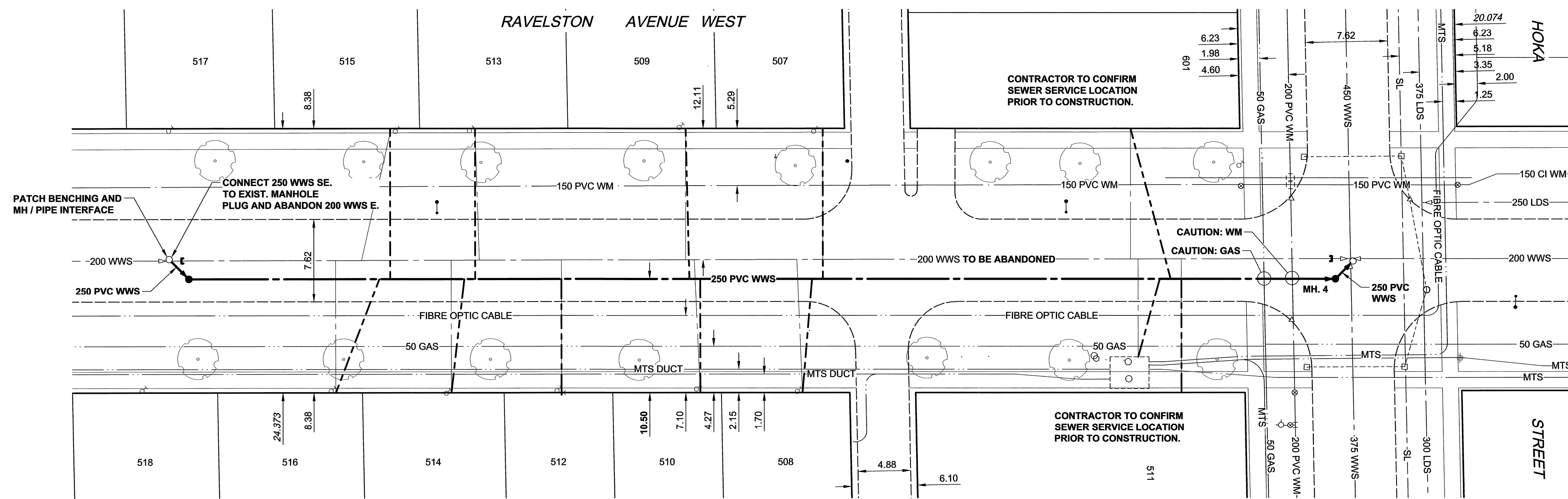
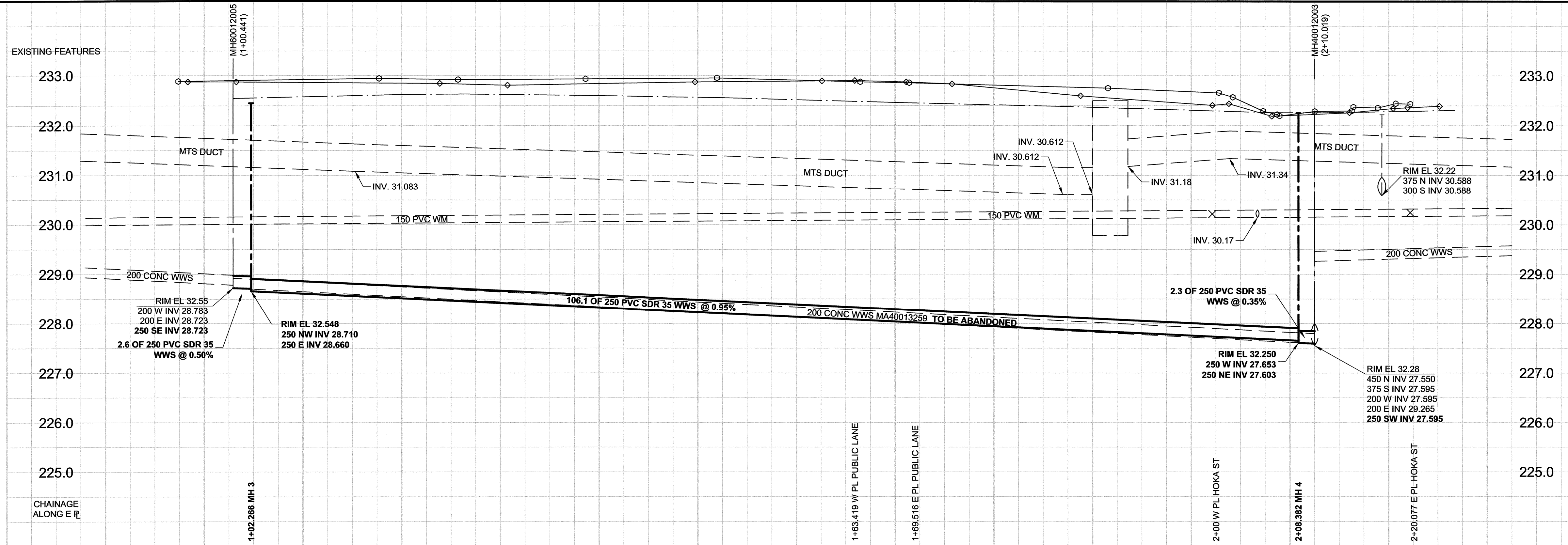


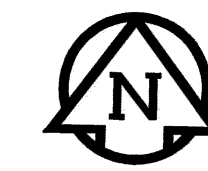
D SIZE 22" x 34" (559mm x 864mm)

PLOT: 110209 4:53:27 PM

AECOM REVIEW DRFT CHK
AECOM FILE NAME: 60164626-01-C-143-R0X.dwg Saved By: lccasteg



NOTE:
PROPOSED SEWER SERVICES SHOWN FOR SCHEMATIC PURPOSES ONLY. CONTRACTOR SHALL LOCATE EXISTING SEWER SERVICES AT PROPERTY LINE. LOCATION OF NEW SERVICES TO BE FIELD DETERMINED AND APPROVED BY CONTRACT ADMINISTRATOR.



SEWER JUNCTION INFORMATION

REF. MH	DIST FROM	SIZE	CLOCK AT
MH40012005	15.40	150g	02
MH40012005	17.80	150g	10
MH40012005	26.10	150g	01
MH40012005	28.70	150g	10
MH40012005	36.30	150g	02
MH40012005	47.80	150g	10
MH40012005	48.60	150g	02
MH40012005	58.10	150g	02
MH40012005	60.50	150g	10
MH40012003	15.90	150g	10
MH40012003	19.90	150g	10
MH40012003	20.60	150g	02

*JUNCTION INFORMATION FROM VIDEO INSPECTION

- CONSTRUCTION NOTES:**
- ALL WORK AND MATERIALS SHALL CONFORM TO THE CITY OF WINNIPEG STANDARD SPECIFICATIONS.
 - INSTALL NEW SEWER BY TRENCHLESS METHODS.
 - ALL AUGER SHAFTS SHALL HAVE CLASS 3 BACKFILL UNDER PAVED SURFACES AND CLASS 5 BACKFILL (GRANULAR BACKFILL TO 300 mm ABOVE SERVICE) IN BOULEVARD AREAS.
 - RENEW SEWER SERVICES TO PROPERTY LINE.
 - ALL SEWER AND WATER SERVICES TO BE LOCATED IN THE FIELD BY THE CONTRACTOR.
 - ABANDON EXISTING SEWER AND SEWER SERVICES.
 - ALL SEWER SERVICES SHALL BE 150 PVC SDR 35.
 - EXIST WASTEWATER SEWER TO BE CAPPED AND ABANDONED.



BID OPPORTUNITY NO. 901-2010

EXISTING	LEGEND - PLAN	NEW	EXISTING	LEGEND - PLAN	NEW	EXISTING	LEGEND - PROFILE	NEW
150 WM	WATERMAIN	150 WM	CURB STOP	150 WM	WATERMAIN	150 WM	WATERMAIN	150 WM
	HYDRANT		REDUCER		HYDRANT		HYDRANT	
	VALVE		COUPLING		VALVE		VALVE	
300 LDS	LAND DRAINAGE SEWER	300 LDS	ANODE	300 LDS	LAND DRAINAGE SEWER	300 LDS	LAND DRAINAGE SEWER	300 LDS
250 WWS	WASTE WATER SEWER	250 WWS	HYDRO	250 WWS	WASTE WATER SEWER	250 WWS	WASTE WATER SEWER	250 WWS
	MANHOLE		MTS		PAVEMENT CROWN		PAVEMENT CROWN	
	CATCH BASIN		GAS		N/W PROPERTY LINE		N/W PROPERTY LINE	
	CURB INLET		TESTHOLE		S/E PROPERTY LINE		S/E PROPERTY LINE	
	CULVERT		LAMP STANDARD		N/W GUTTER		N/W GUTTER	
	PIPE ABANDONMENTS		TREE		S/E GUTTER		S/E GUTTER	
	SURVEY BAR							

LOCATION APPROVED UNDERGROUND STRUCTURES

SUPR. U/G STRUCTURES COMMITTEE DATE

NOTE:
LOCATION OF UNDERGROUND STRUCTURES AS SHOWN ARE BASED ON THE BEST INFORMATION AVAILABLE. BUT NO GUARANTEE IS GIVEN THAT ALL EXISTING UTILITIES ARE SHOWN OR THAT THE GIVEN LOCATIONS ARE EXACT. CONFIRMATION OF EXISTENCE AND EXACT LOCATION OF ALL SERVICES MUST BE OBTAINED FROM THE INDIVIDUAL UTILITIES BEFORE PROCEEDING WITH CONSTRUCTION.

B.M. 30-046 ELEV. 232.279m

S.E. Cor. Ravelston Ave. W. & Hoka St. Tilt on top of 0.05m sq. x 2.4m iron tube, 4.7m N. of S.E. Ravelston Ave. W. & 4.9m W. of E.L. Hoka St.

This drawing has been prepared for the use of AECOM's client and may not be used, reproduced or relied upon by third parties, except as agreed by AECOM and its client, as required by law or for use by governmental reviewing agencies. AECOM accepts no responsibility, and denies any liability whatsoever, to any party that modifies this drawing without AECOM's express written consent. Do not scale this document. All measurements must be obtained from stated dimensions.

DESIGNED BY PL CHECKED BY *114*

DRAWN BY GDL APPROVED BY *B. J. Johnson*

HOR. SCALE 1:250 RELEASED FOR CONSTRUCTION

VERT. SCALE 1:50 DATE *11/02/10*

0 ISSUED FOR CONSTRUCTION 11/02/09 GDL

NO. REVISIONS 11/02/10 BY

AECOM

PROFESSIONAL'S SEAL

PROV. INC. OF MANITOBA
K.W.
FITCHETT
REGISTERED PROFESSIONAL ENGINEER

CONSULTANT DRAWING NO. 60164626-01-C-143-R0X.dwg

THE CITY OF WINNIPEG WATER AND WASTE DEPARTMENT

2010 WASTEWATER SEWER RENEWALS AND REPAIRS CONTRACT 16

RAVELSTON AVENUE WEST
100m WEST OF HOKA STREET TO HOKA STREET

SHEET 43 OF 45
CITY DRAWING NUMBER 9475
REV 0