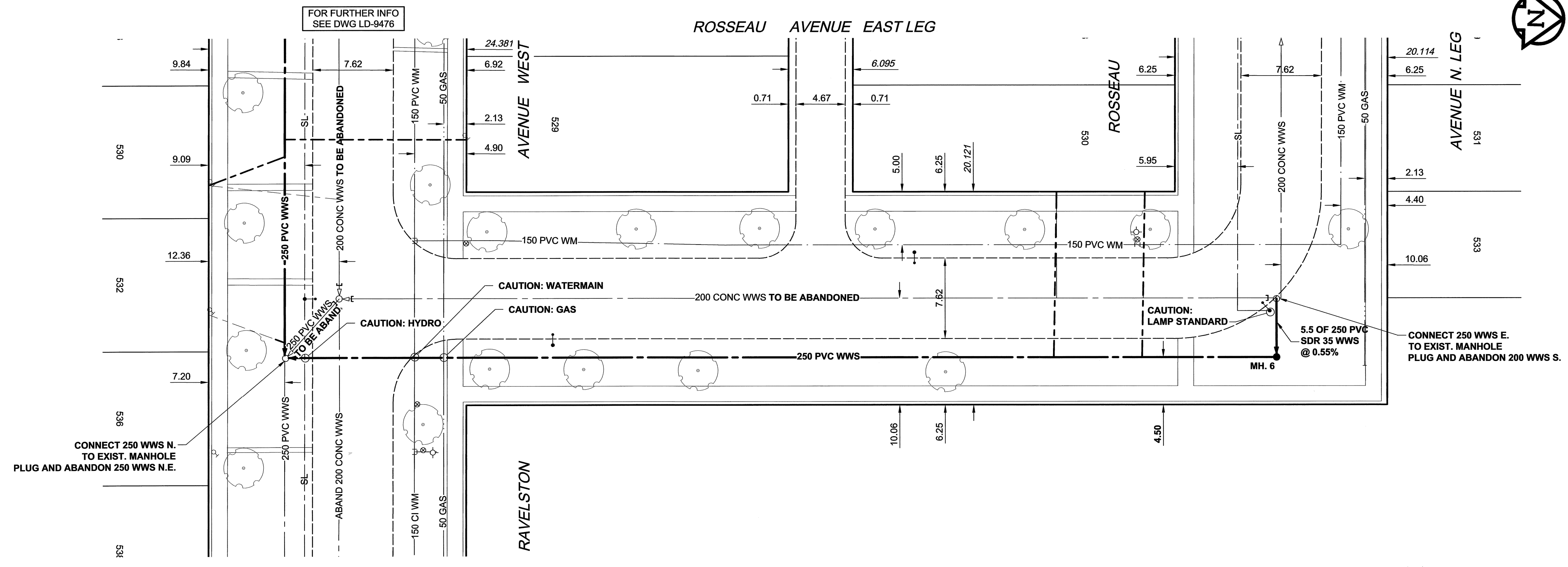
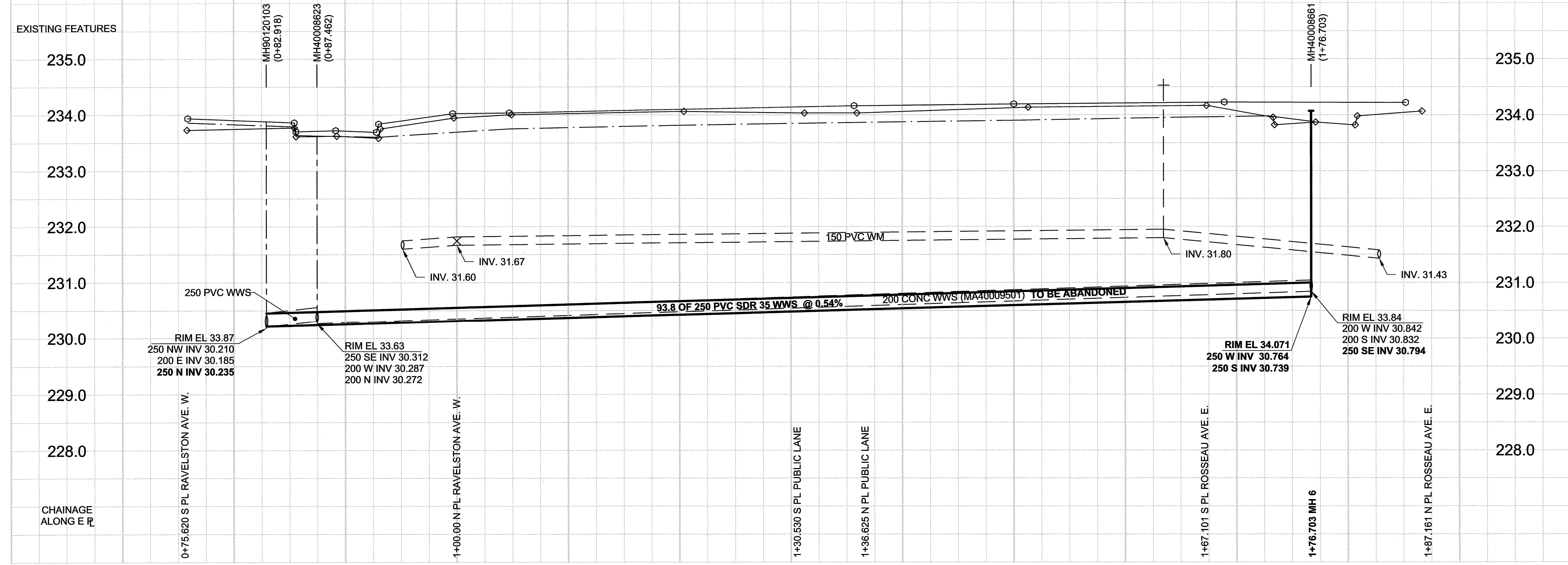


D SIZE 22" x 34" (559mm x 864mm)

PLOT: 110209.453:11 PM

AECOM REVIEW DRFT CHK AECOM FILE NAME: 80164626-01-C-145-R0X.dwg Saved By: lcorsteg



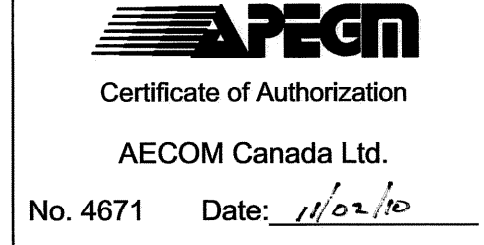
**SEWER JUNCTION INFORMATION**

REF. MH*	DIST FROM REF. MH	SIZE*	CLOCK AT*
MH40008661	12.60	150g	02
MH40008661	20.80	150g	02

\*JUNCTION INFORMATION FROM VIDEO INSPECTION

- CONSTRUCTION NOTES:**
- ALL WORK AND MATERIALS SHALL CONFORM TO THE CITY OF WINNIPEG STANDARD SPECIFICATIONS.
  - INSTALL NEW SEWER BY TRENCHLESS METHODS.
  - ALL AUGER SHAFTS SHALL HAVE CLASS 3 BACKFILL UNDER PAVED SURFACES AND CLASS 5 BACKFILL (GRANULAR BACKFILL TO 300 mm ABOVE SERVICE ) IN BOULEVARD AREAS.
  - RENEW SEWER SERVICES TO PROPERTY LINE.
  - ALL SEWER AND WATER SERVICES TO BE LOCATED IN THE FIELD BY THE CONTRACTOR.
  - ABANDON EXISTING SEWER AND SEWER SERVICES.
  - ALL SEWER SERVICES SHALL BE 150 PVC SDR 35.
  - EXIST WASTEWATER SEWER TO BE CAPPED AND ABANDONED.

**NOTE:**  
 PROPOSED SEWER SERVICES SHOWN FOR SCHEMATIC PURPOSES ONLY. CONTRACTOR SHALL LOCATE EXISTING SEWER SERVICES AT PROPERTY LINE. LOCATION OF NEW SERVICES TO BE FIELD DETERMINED AND APPROVED BY CONTRACT ADMINISTRATOR.



BID OPPORTUNITY NO. 901-2010

EXISTING	LEGEND - PLAN	NEW	EXISTING	LEGEND - PLAN	NEW	EXISTING	LEGEND - PROFILE	NEW
150 WM	WATERMAIN	150 WM	CURB STOP	150 WM	WATERMAIN	150 WM	WATERMAIN	150 WM
	HYDRANT		REDUCER		HYDRANT		HYDRANT	
	VALVE		COUPLING		VALVE		VALVE	
300 LDS	LAND DRAINAGE SEWER	300 LDS	ANODE		300 LDS	LAND DRAINAGE SEWER	300 LDS	LAND DRAINAGE SEWER
250 WWS	WASTE WATER SEWER	250 WWS	HYDRO		250 WWS	WASTE WATER SEWER	250 WWS	WASTE WATER SEWER
	MANHOLE		MTS			PAVEMENT CROWN		
	CATCH BASIN		GAS			N/W PROPERTY LINE		
	CURB INLET		TESTHOLE			S/E PROPERTY LINE		
	CULVERT		LAMP STANDARD			N/W GUTTER		
	PIPE ABANDONMENTS		TREE			S/E GUTTER		
	SURVEY BAR							

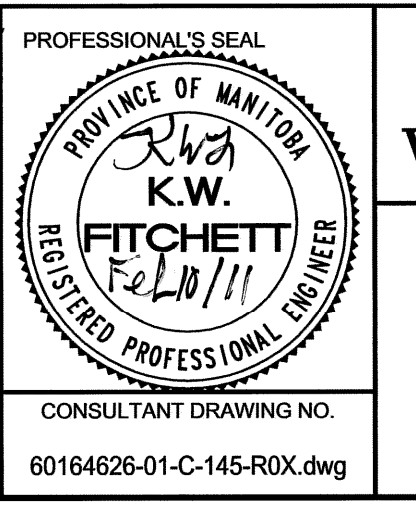
**LOCATION APPROVED**  
 UNDERGROUND STRUCTURES

SUPR. U/G STRUCTURES DATE

**NOTE:**  
 LOCATION OF UNDERGROUND STRUCTURES AS SHOWN ARE BASED ON THE BEST INFORMATION AVAILABLE. BUT NO GUARANTEE IS GIVEN THAT ALL EXISTING UTILITIES ARE SHOWN OR THAT THE GIVEN LOCATIONS ARE EXACT. CONFIRMATION OF EXISTENCE AND EXACT LOCATION OF ALL SERVICES MUST BE OBTAINED FROM THE INDIVIDUAL UTILITIES BEFORE PROCEEDING WITH CONSTRUCTION.

B.M. 30-053	N.W. Cor. Ravelston Ave. E. & Louis St. 10ft on Top of 0.05m sq. x 2.4 m Iron Tube, 6.9m S. of N.L. of Ravelston Ave. E. & 0.2m W. of W.L. of Louis St.		
NO.	REVISIONS	DATE	BY
0	ISSUED FOR CONSTRUCTION	11/02/10	GDL

<b>AECOM</b>	DESIGNED BY	PL	CHECKED BY	11/
	DRAWN BY	GDL	APPROVED BY	[Signature]
	HOR. SCALE	1:250	RELEASED FOR CONSTRUCTION	[Signature]
	VERT. SCALE	1:50	DATE	11/02/10



**THE CITY OF WINNIPEG**  
**WATER AND WASTE DEPARTMENT**

**2010 WASTEWATER SEWER RENEWALS AND REPAIRS CONTRACT 16**  
 ROSSEAU AVENUE EAST LEG  
 RAVELSTON AVENUE WEST TO ROSSEAU AVENUE NORTH LEG

SHEET 45 OF 45  
 CITY DRAWING NUMBER 9477  
 REV 0