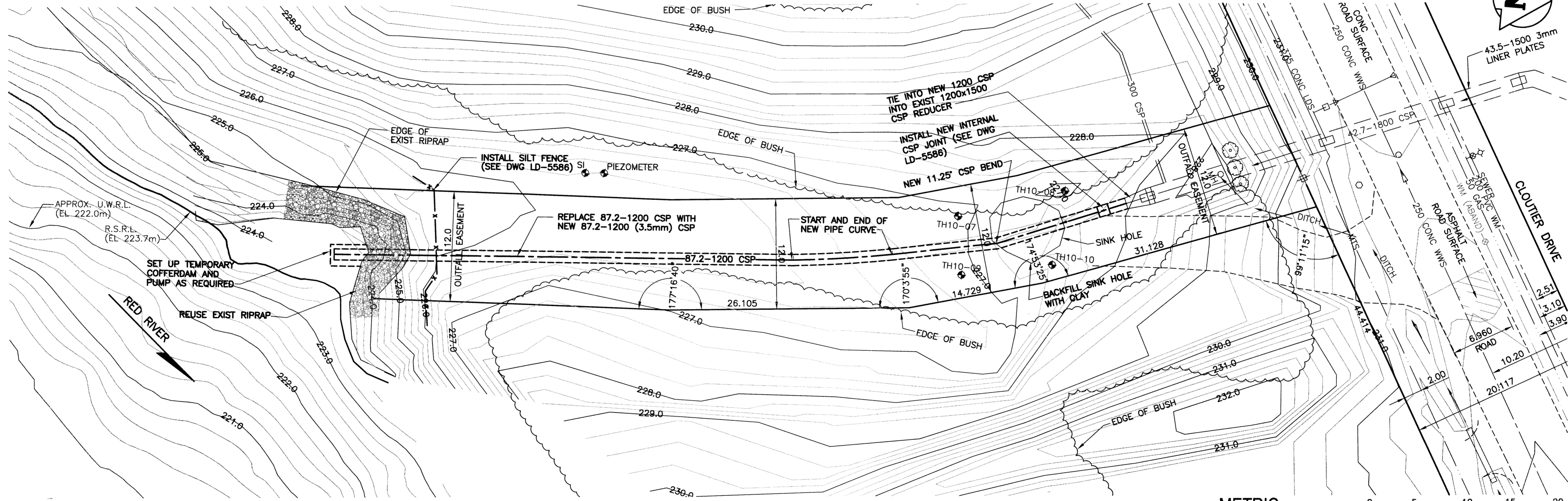


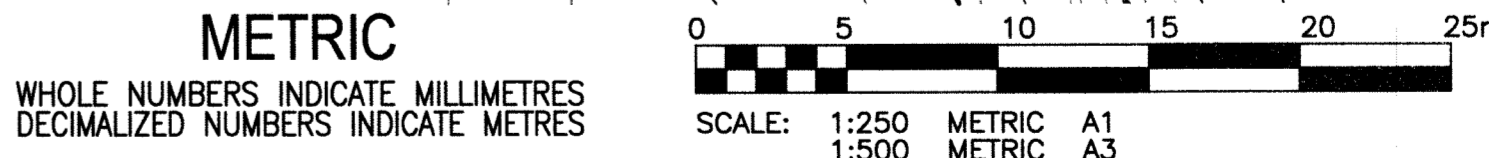
NOTE:  
UWRL IS EXPECTED TO BE HIGHER THAN NORMAL FOR THE 2010 / 2011 WINTER  
U.W.R.L. 222.0



- NOTE:
1. REQUIRED LENGTH, LOCATION AND ANGLE OF BEND TO BE FIELD VERIFIED BEFORE SUBMITTAL OF SHOP DRAWINGS
  2. THE CONTRACTOR SHALL PLACE GEOTEXTILE SUCH THAT THE PIPE GRANULAR BACKFILL IS COMPLETELY COVERED AND THE FABRIC EXTENDS A MINIMUM OF 1.0m ONTO THE ADJACENT CLAY SOIL. THE FABRIC SHALL BE WRAPPED AROUND THE OUTFALL PIPE AND HELD IN PLACE WITH THE OVERLYING RIPRAP.
  3. RIPRAP ABOVE THE UWRL WITHIN THE CITY OF R.O.W. TO BE SUBCUT INTO THE BANK AND PLACED FLUSH WITH ORIGINAL GROUND SURFACE. ALL EXCAVATED MATERIAL TO BE REMOVED OFF SITE.
  4. TOPOGRAPHY BASED ON KGS GROUP SURVEYS OF OCT 22, 2010 AND NOV 22, 2010.
  5. RIVER BOTTOM CONTOURS BASED ON KGS GROUP BATHYMETRIC SURVEY OF SEPT 30, 2010.

PROPERTY LIMITS DELINEATION  
DELINEATION OF PROPERTY LIMITS AS SHOWN ON THIS DWG DOES NOT REPRESENT A "LEGAL SURVEY". KGS GROUP MAKES NO REPRESENTATION OR WARRANTY AS TO THE ACCURACY OF PROPERTY LIMITS DELINEATED ON THIS DWG, NOR ON THE DIMENSIONAL ACCURACY OF DWG FEATURES RELATIVE TO THOSE PROPERTY LIMITS.

CLOUTIER DRIVE OUTFALL RR-7



150_WM	WATERMAIN	150_WM	HYDRO M.T.S.			
⊕	HYDRANT	⊕	PROPERTY LINE			
⊕	VALVE	⊕	SURVEY BAR			
300_LDS	LAND DRAINAGE SEWER	300_LDS	LIGHT STANDARD			
250_WWS	WASTE WATER SEWER	250_WWS	HYDRO POLE			
○	MANHOLE	●	GUY WIRE			
□	CATCH BASIN	— —	SIGN			
▽	CURB INLET	○	BUSH LINE			
+	JUNCTIONS	—+—	FENCE			
—+—	CULVERT	— —	ELEVATION	231.334	(32.231)	
—+—	GAS	— —				
---	EXISTING	---	LEGEND-PLAN	PROPOSED	EXISTING	LEGEND-PROFILE
---	LEGEND-PLAN	---	PROPOSED	EXISTING	LEGEND-PROFILE	PROPOSED

LOCATION APPROVED UNDERGROUND STRUCTURES  
SUPV. U/G STRUCTURES COMMITTEE DATE  
NOTE:  
LOCATION OF UNDERGROUND STRUCTURES AS SHOWN ARE BASED ON THE BEST INFORMATION AVAILABLE BUT NO GUARANTEE IS GIVEN THAT ALL EXISTING UTILITIES ARE SHOWN OR THAT THE GIVEN LOCATIONS ARE EXACT. CONFIRMATION OF EXISTENCE AND EXACT LOCATION OF ALL SERVICES MUST BE OBTAINED FROM THE INDIVIDUAL UTILITIES BEFORE PROCEEDING WITH CONSTRUCTION.

B.M. KGS BASE ELEV.	DWGS BASED ON C.S.R.S. NAD 83 SYSTEM, UTM GRID		
NO.	REVISIONS	DATE	BY
1	RE-ISSUED FOR TENDER	10/12/10	RBO
0	ISSUED FOR TENDER	10/12/06	RBO

**KGS GROUP CONSULTING ENGINEERS**

DESIGNED BY: RBO  
CHECKED BY: RJH  
DRAWN BY: DMW  
APPROVED BY:  
HOR. SCALE: 1:250  
VERTICAL: 1:50  
RELEASED FOR CONSTRUCTION: DATE

ENGINEER'S SEAL  
PROF. R.B. OFFMAN  
MEMBER 24701  
CONSULTANT DRAWING NO. 10-0107-18\_01

THE CITY OF WINNIPEG WATER & WASTE DEPARTMENT

2010 OUTFALL REPAIRS CLOUTIER DRIVE RR-7

PROPOSED PLAN AND PROFILE

SHEET 01 OF 05  
CAD FILE DRAWING NUMBER 05-0107-11  
CITY DRAWING NUMBER LD-5581

**APEGN**  
Certificate of Authorization  
KGS Group  
No. 245 Date: Dec 10, 2010