

TYPICAL SPAN LAYOUT

UNDERSIDE DECK PLAN

SCALE N.T.S.

ABBREVIATIONS:
 FB - FLOOR BEAM
 G - GIRDER
 MS - MAIN STRINGER
 SS - SECONDARY STRINGER
 D - DIAPHRAGM BEAM

NOTE:
 ABBREVIATIONS SHOWN IN BOLD ARE MEMBERS TO BE REPAIRED/REPLACED. SEE DRAWING 7 FOR DETAILS.

SOUTH APPROACH SPAN REPAIRS

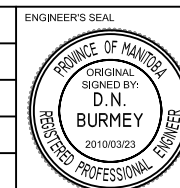
REPAIR TYPE	DESCRIPTION	LOCATION	MATERIAL (PER REPAIR LOCATION)	ESTIMATED QUANTITIES (PER REPAIR LOCATION)
①	REPLACE EXISTING SEVERELY CORRODED BOTTOM FLANGES OF NOTED FLOOR BEAMS WITH NEW EQUIVALENT DOUBLE ANGLE FLANGES.	5 & 6 & 7 & 8 & 11 & 13 & 13A	2-150x150x13 L'S 22# BOLTS	7.62 LINEAL m (DOUBLE ANGLE) 90 BOLTS
②	REPLACE EXISTING SEVERELY CORRODED BOTTOM FLANGES OF NOTED GIRDERS WITH NEW EQUIVALENT DOUBLE ANGLE FLANGES.	SPAN 5 (EAST & WEST), SPAN 6 (EAST & WEST), SPAN 7 (WEST), SPAN 10 (WEST), & SPAN 11 (WEST).	2-80x60x10 L'S 20# BOLTS	7.62 LINEAL m (DOUBLE ANGLE) 99 BOLTS

THE DETAILS AND DIMENSIONS SHOWN ON THE DRAWINGS HAVE BEEN OBTAINED FROM ORIGINAL DESIGN DRAWINGS. CONTRACTOR TO VERIFY ALL DETAILS AND DIMENSIONS AND REPORT ANY DISCREPANCIES TO THE CONTRACT ADMINISTRATOR PRIOR TO COMMENCING WORK.

NOTE:

METRIC
 WHOLE NUMBERS INDICATE MILLIMETRES
 DECIMALIZED NUMBERS INDICATE METRES

B.M. ELEV.	DESIGNED BY: D.N.B.
	DRAWN BY: M.R.T.
	CHECKED BY: D.N.B.
	APPROVED BY: D.N.B.
	AUTHORIZED BY:
0 ISSUED OR TENDER 23/03/10 M.T.	ORIGINAL SIGNED BY D.N. BURMEY
REVISION DATE BY	D.N. BURMEY BRIDGE MAINTENANCE ENGINEER



CITY OF WINNIPEG
 PUBLIC WORKS DEPARTMENT
 ENGINEERING DIVISION

ARLING TON OVERPASS (CPR YARDS)
 2010 STRUCTURAL STEEL REPAIRS

SOUTH APPROACH SPANS

SHEET 3 OF 8
 HORIZONTAL: N.T.S.
 VERTICAL: N.T.S.
 CITY DRAWING NUMBER:
B106-10-03

BID OPPORTUNITY NO.:
 91-2010