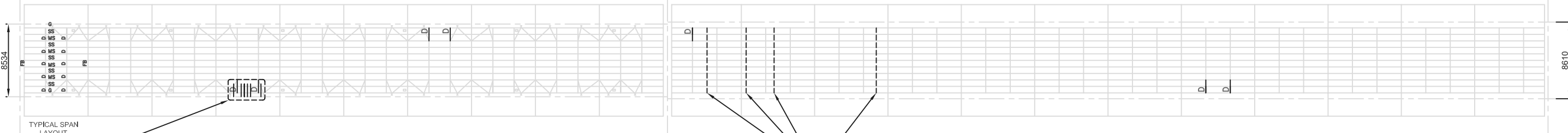


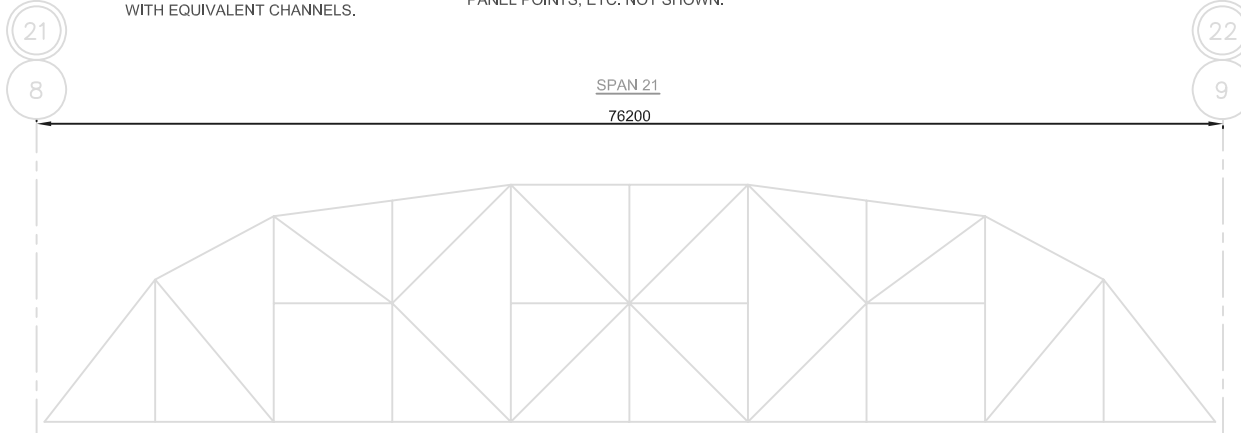
TRUSS ELEVATION
SCALE N.T.S.



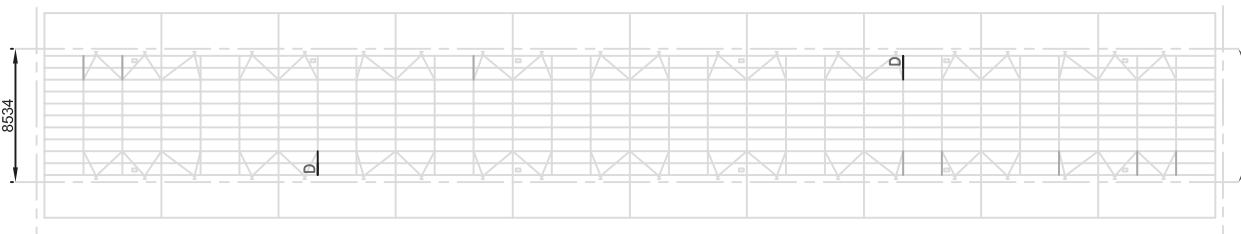
UNDERSIDE DECK PLAN
SCALE N.T.S.
MAIN FRAMING MEMBERS SHOWN ONLY.
CROSS BRACING BETWEEN TRUSS
PANEL POINTS, ETC. NOT SHOWN.

REPLACE SEVERELY CORRODED CHANNELS SUPPORTING STEEL DECK WITH EQUIVALENT CHANNELS.

REMOVE SEVERELY CORRODED PLATFORM FRAMING MEMBERS (ANGLES AND CONNECTIONS) IN THIS AREA.



TRUSS ELEVATION
SCALE N.T.S.



UNDERSIDE DECK PLAN
SCALE N.T.S.

CAMEL BACK TRUSS SPAN REPAIRS

REPAIR TYPE	DESCRIPTION	LOCATION	MATERIAL (PER REPAIR LOCATION)	ESTIMATED QUANTITIES (PER REPAIR LOCATION)
3	REPLACE EXISTING SEVERELY CORRODED DIAPHRAGMS WITH NEW EQUIVALENT W-SECTIONS.	SPAN 19 (4 LOCATIONS), SPAN 20 (3 LOCATIONS), SPAN 21 (2 LOCATIONS),	1-W200x21 1-152x89x13 SEAT ANGLES 2-89x76x9.5 CLIP ANGLES 20# BOLTS	1.52 LINEAL m (W200x21) 100mm LONG SEAT ANGLES 2-76mm LONG CLIP ANGLES 14 BOLTS
4	REPLACE EXISTING SEVERELY CORRODED CHANNELS SUPPORTING STEEL DECK WITH EQUIVALENT CHANNELS.	SPAN 19 (6 LOCATIONS),	1 - C150 x 12	1.0 LINEAL m (C150x12)
5	REMOVE EXISTING SEVERELY CORRODED PLATFORM FRAMING MEMBERS.	SPAN 20 (3 LOCATIONS),	N/A	N/A

ABBREVIATIONS:
FB - FLOOR BEAM
G - GIRDER
MS - MAIN STRINGER
SS - SECONDARY STRINGER
D - DIAPHRAGM BEAM

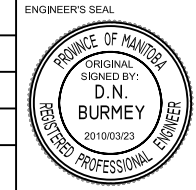
ABBREVIATIONS SHOWN IN BOLD ARE MEMBERS TO BE REPAIRED/REPLACED. SEE DRAWING 7 FOR DETAILS.

THE DETAILS AND DIMENSIONS SHOWN ON THE DRAWINGS HAVE BEEN OBTAINED FROM ORIGINAL DESIGN DRAWINGS. CONTRACTOR TO VERIFY ALL DETAILS AND DIMENSIONS AND REPORT ANY DISCREPANCIES TO THE CONTRACT ADMINISTRATOR PRIOR TO COMMENCING WORK.

NOTE:

METRIC
WHOLE NUMBERS INDICATE MILLIMETRES
DECIMALIZED NUMBERS INDICATE METRES

B.M. ELEV.	DESIGNED BY: D.N.B.
	DRAWN BY: M.R.T.
	CHECKED BY: D.N.B.
	APPROVED BY: D.N.B.
	AUTHORIZED BY:
0 ISSUED FOR TENDER 23/03/10 M.T.	ORIGINAL SIGNED BY D.N. BURMEY
REVISION DATE BY	D.N. BURMEY BRIDGE MAINTENANCE ENGINEER



CITY OF WINNIPEG
PUBLIC WORKS DEPARTMENT
ENGINEERING DIVISION

ARLINGTON OVERPASS (CPR YARDS)
2010 STRUCTURAL STEEL REPAIRS

CAMEL BACK TRUSS SPANS

SHEET 5 OF 8
HORIZONTAL: N.T.S.
VERTICAL: N.T.S.
CITY DRAWING NUMBER:
B106-10-05

BID OPPORTUNITY NO.:
91-2010