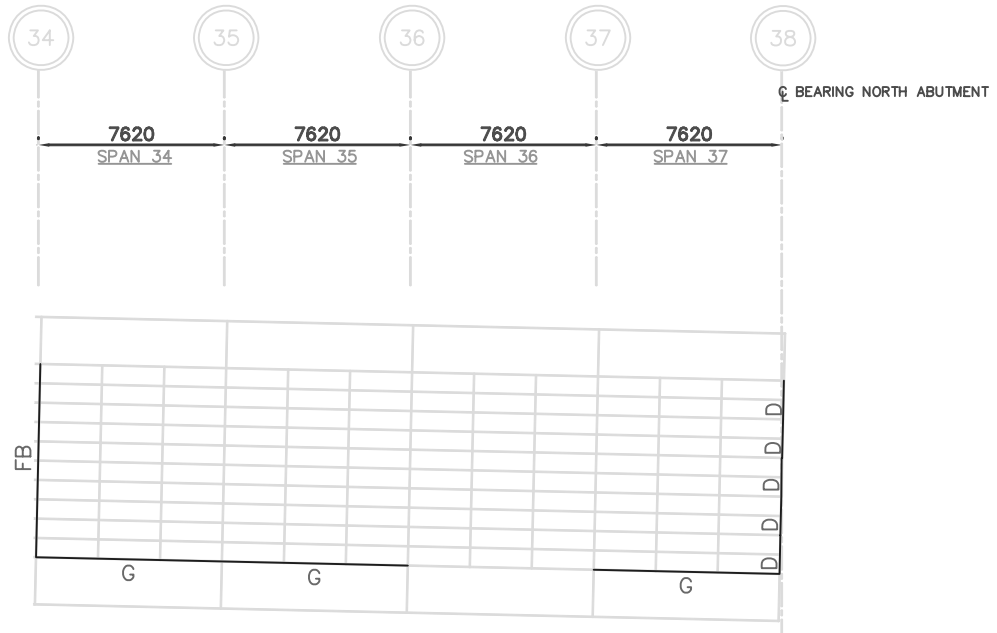


TYPICAL SPAN LAYOUT

ABBREVIATIONS:
 FB - FLOOR BEAM
 G - GIRDER
 MS - MAIN STRINGER
 SS - SECONDARY STRINGER
 D - DIAPHRAGM BEAM

ABBREVIATIONS SHOWN IN BOLD ARE MEMBERS TO BE REPAIRED/REPLACED. SEE DRAWING 7 FOR DETAILS.

UNDERSIDE DECK PLAN
 SCALE N.T.S.



UNDERSIDE DECK PLAN
 SCALE N.T.S.

NORTH APPROACH SPAN REPAIRS

REPAIR TYPE	DESCRIPTION	LOCATION	MATERIAL (PER REPAIR LOCATION)	ESTIMATED QUANTITIES (PER REPAIR LOCATION)
①	REPLACE EXISTING SEVERELY CORRODED BOTTOM FLANGES OF NOTED FLOOR BEAMS WITH NEW EQUIVALENT DOUBLE ANGLE FLANGES.	28 & 34	2-150x150x13 L'S 22# BOLTS	7.62 LINEAL m (DOUBLE ANGLE) 90 BOLTS
②	REPLACE EXISTING SEVERELY CORRODED BOTTOM FLANGES OF NOTED GIRDERS WITH NEW EQUIVALENT DOUBLE ANGLE FLANGES.	SPAN 28 (EAST & WEST), SPAN 29 (EAST & WEST), SPAN 30 (EAST & WEST), SPAN 34 (EAST), SPAN 35 (EAST) & SPAN 37 (EAST).	2-80x60x10 L'S 20# BOLTS	7.62 LINEAL m (DOUBLE ANGLE) 99 BOLTS
③	REPLACE EXISTING SEVERELY CORRODED DIAPHRAGMS WITH NEW EQUIVALENT W-SECTIONS.	SPAN 37 (5 LOCATIONS)	1-W200x21 1-152x89x13 SEAT ANGLES 2-89x76x9.5 CLIP ANGLES 20# BOLTS	1.52 LINEAL m (W200x21) 100mm LONG SEAT ANGLES 2-76mm LONG CLIP ANGLES 14 BOLTS

THE DETAILS AND DIMENSIONS SHOWN ON THE DRAWINGS HAVE BEEN OBTAINED FROM ORIGINAL DESIGN DRAWINGS. CONTRACTOR TO VERIFY ALL DETAILS AND DIMENSIONS AND REPORT ANY DISCREPANCIES TO THE CONTRACT ADMINISTRATOR PRIOR TO COMMENCING WORK.

NOTE:	B.M. ELEV.	DESIGNED BY: D.N.B.			ARLING TON OVERPASS (CPR YARDS) 2010 STRUCTURAL STEEL REPAIRS	SHEET 6 OF 8
		DRAWN BY: M.R.T.				
		CHECKED BY: D.N.B.	BID OPPORTUNITY NO.: 91-2010	NORTH APPROACH SPANS	CITY DRAWING NUMBER: B106-10-06	
		APPROVED BY: D.N.B.				
		AUTHORIZED BY:				
		ORIGINAL SIGNED BY D.N. BURMEY				
	0 ISSUED FOR TENDER 23/03/10 M.T.	D.N. BURMEY BRIDGE MAINTENANCE ENGINEER				
	REVISION DATE BY					

METRIC
 WHOLE NUMBERS INDICATE MILLIMETRES
 DECIMALIZED NUMBERS INDICATE METRES