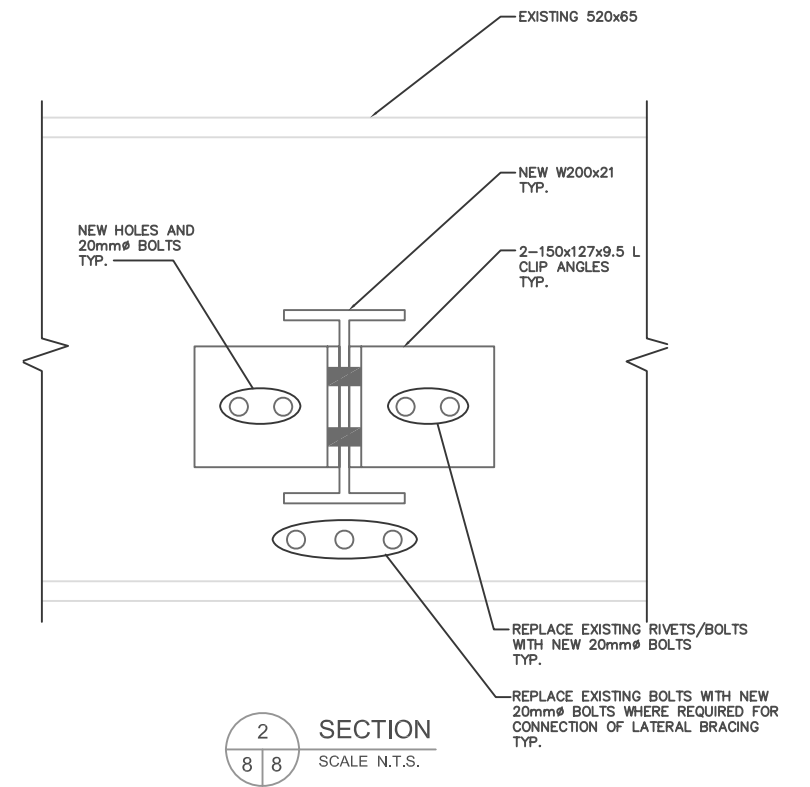
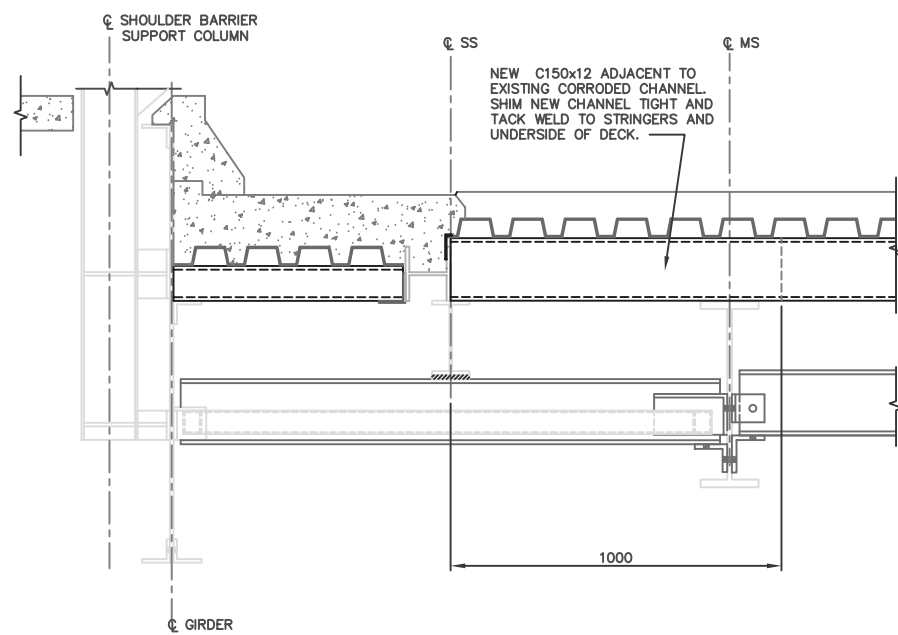


1 SECTION @ APPROACH SPAN - SHOWING DIAPHRAGM - TYPE 3 REPAIR
 2 8 SCALE N.T.S.



2 SECTION
 8 8 SCALE N.T.S.



3 SECTION @ TRUSS SPAN - SHOWING CHANNEL - TYPE 4 REPAIR
 2 8 SCALE N.T.S.

THE DETAILS AND DIMENSIONS SHOWN ON THE DRAWINGS HAVE BEEN OBTAINED FROM ORIGINAL DESIGN DRAWINGS. CONTRACTOR TO VERIFY ALL DETAILS AND DIMENSIONS AND REPORT ANY DISCREPANCIES TO THE CONTRACT ADMINISTRATOR PRIOR TO COMMENCING WORK.

NOTE:

METRIC
 WHOLE NUMBERS INDICATE MILLIMETRES
 DECIMALIZED NUMBERS INDICATE METRES

| | |
|---------------------|---------------|
| DESIGNED BY: | D.N.B. |
| DRAWN BY: | M.R.T. |
| CHECKED BY: | D.N.B. |
| APPROVED BY: | D.N.B. |
| AUTHORIZED BY: | |
| ORIGINAL SIGNED BY: | D.N. BURMEY |
| ISSUED FOR TENDER: | 23/03/10 M.T. |
| REVISION: | DATE BY |

ENGINEER'S SEAL

PROVINCE OF MANITOBA
 ORIGINAL SIGNED BY:
D.N. BURMEY
 2010/03/23
 REGISTERED PROFESSIONAL ENGINEER

BID OPPORTUNITY NO.:
 91-2010

CITY OF WINNIPEG
 PUBLIC WORKS DEPARTMENT
 ENGINEERING DIVISION

ARLING TON OVERPASS (CPR YARDS)
 2010 STRUCTURAL STEEL REPAIRS

STRUCTURAL STEEL AND
 MISCELLANEOUS DETAILS (2 OF 2)

SHEET 8 OF 8

HORIZONTAL: N.T.S.
 VERTICAL: N.T.S.

CITY DRAWING NUMBER:
B106-10-08