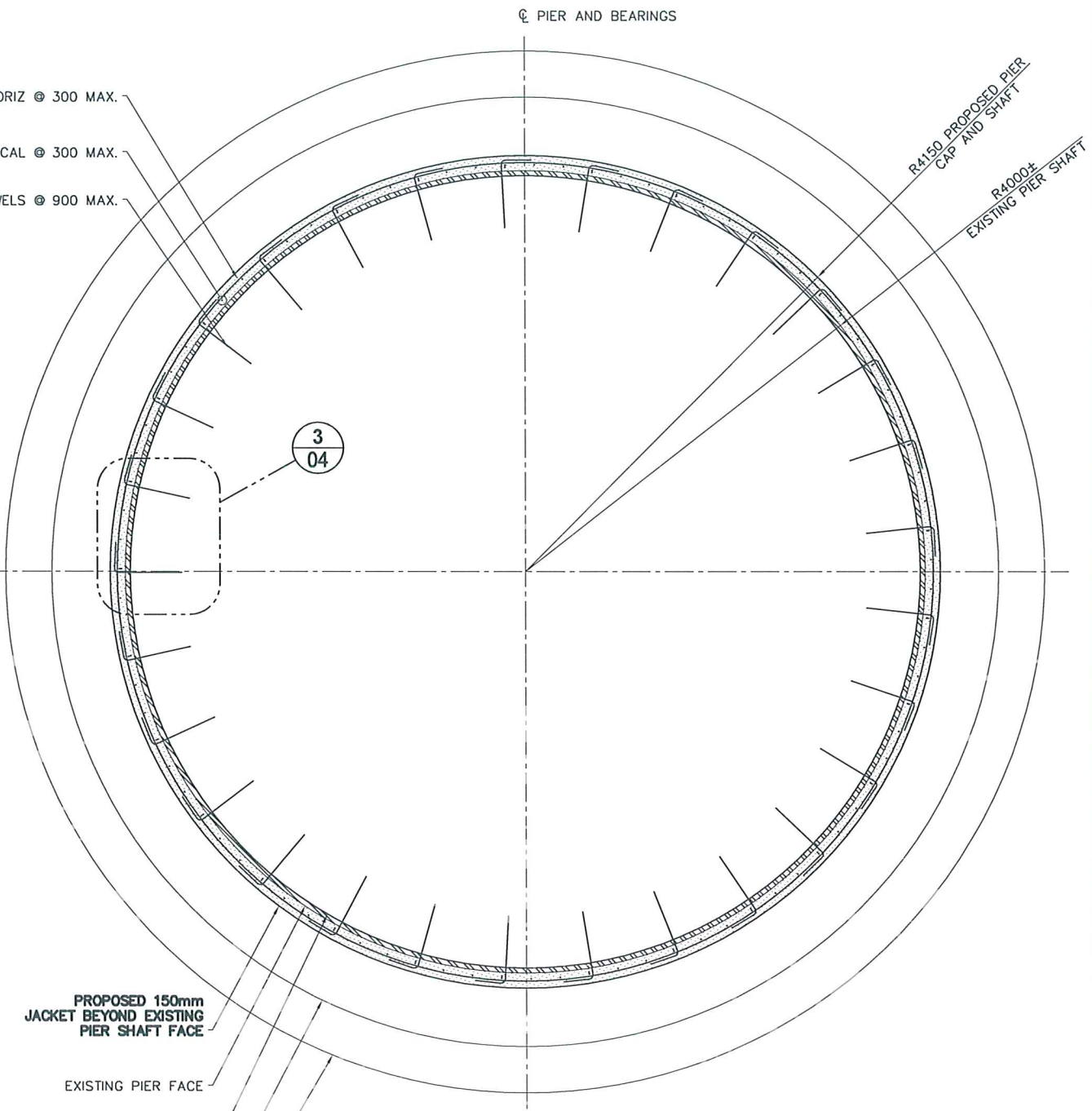


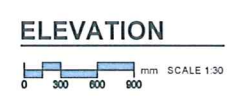
9 - 20M DOWELS @ 600  
17 - 20M @ 300

29-20M DOWELS x 1000 LG @ 900 MAX.  
87 - 20M @ 300 MAX.

20M HORIZ @ 300 MAX.  
20M VERTICAL @ 300 MAX.  
20M DOWELS @ 900 MAX.



PROPOSED 150mm JACKET BEYOND EXISTING PIER SHAFT FACE  
EXISTING PIER FACE  
PROPOSED 50 - 100mm CONCRETE REMOVAL  
EXISTING INNER JACKET  
EXISTING OUTER JACKET



**LEGEND**

REPAIR TYPE 1	
REPAIR TYPE 2	
NEW CONCRETE	

**METRIC**  
ALL DIMENSIONS ARE IN mm UNLESS NOTED OTHERWISE

DESIGNED BY: ARB		CHECKED BY: EBL	
		APPROVED BY: EBL	
DRAWN BY: MSK		RELEASED FOR CONSTRUCTION BY:	
HOR. SCALE: AS NOTED		DATE: 2010/11/26	
VER. SCALE: AS NOTED		DATE: 2010/11/26	
ISSUED FOR TENDER	10/11/26	MSK	
NO. REVISIONS	DATE	BY	



**AECOM**

**THE CITY OF WINNIPEG**  
PUBLIC WORKS DEPARTMENT  
ENGINEERING DIVISION

**ELM PARK PEDESTRIAN BRIDGE  
PIER 2 ENCAPSULATION**

ELEVATION AND SECTION

BID OPPORTUNITY 912-2010  
SHEET 3 OF 4  
CITY DRAWING NUMBER B131-11-03

CONSULTANT DRAWING NO. CT-103

