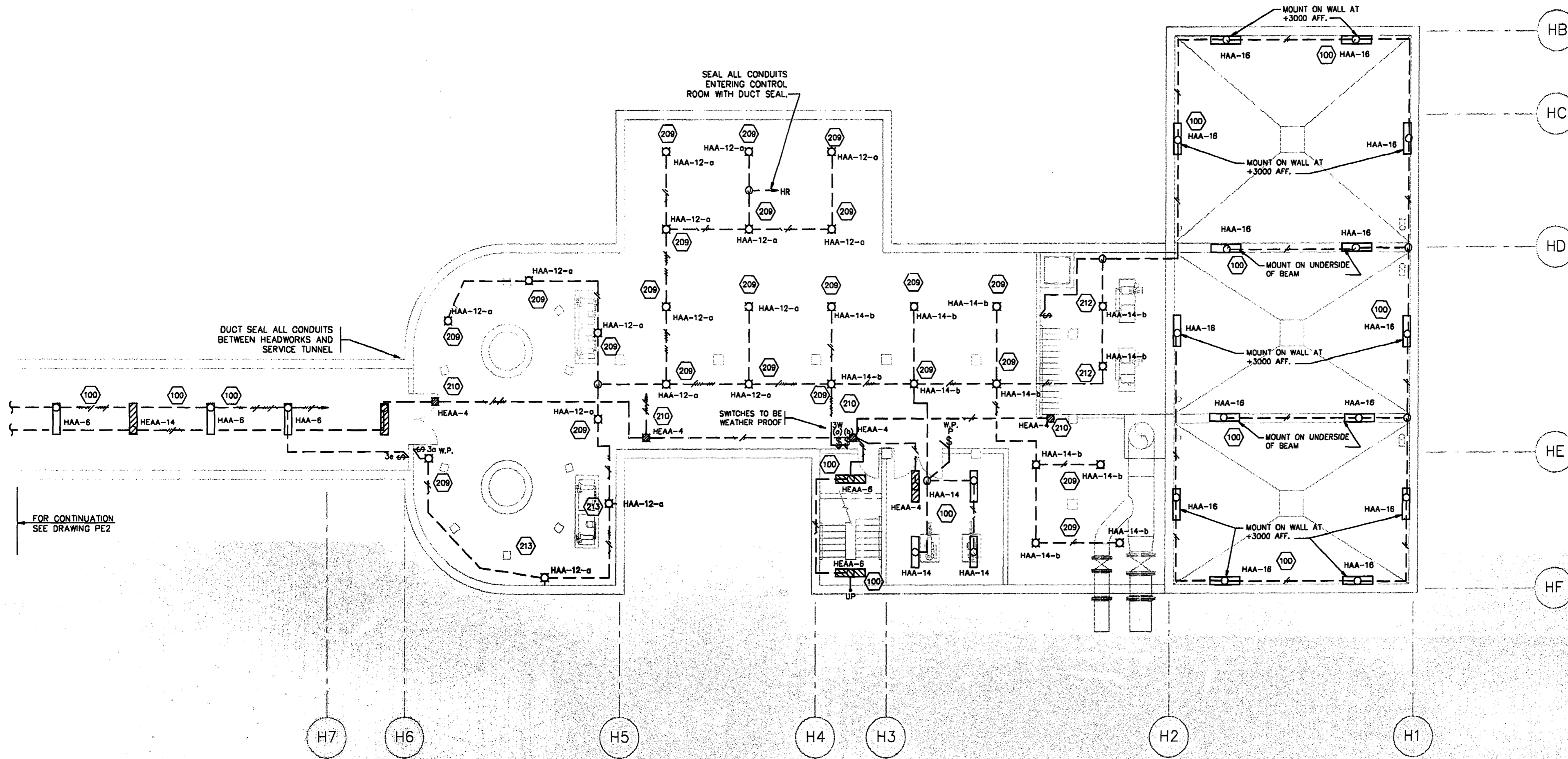


- NOTE:**
1. PENDENT MOUNT FIXTURES BELOW PROCESS, MECHANICAL AND ELECTRICAL EQUIPMENT.
  2. ALL LIGHT SWITCHES TO BE WEATHER PROOF AND MOUNTED AT +1375 AFF.
  3. UTILIZE PVC JACKETED TECK CABLE FOR ALL POWER WIRING, WIRING FOR LIGHTING, RECEPTACLES AND COMMUNICATIONS TO BE IN RIGID ALUMINUM CONDUIT.
  4. ALL CONDUIT TO BE MINIMUM 19mmØ CONDUIT UNLESS OTHERWISE NOTED.



FOR CONTINUATION  
SEE DRAWING PE2

THE ENGINEER THAT SEALED THIS DRAWING IS RESPONSIBLE FOR ONLY THE AS-CONSTRUCTED CHANGES ON THIS DRAWING.  
THE ORIGINAL DESIGN WAS THE RESPONSIBILITY OF THE DESIGN ENGINEER WHO SEALED THE ISSUED FOR TENDER DRAWINGS IN 1991.

REID, CROWTHER & PARTNERS LIMITED  
WINNIPEG

**AS CONSTRUCTED**

DATE: 23/11

- detail symbol
- A detail number
  - B drawing where detail shown
  - C cross reference to drawing where detail taken



B.M.	69-006		
ELEV.	237.636 m		
NO.	REVISIONS	DATE	BY
1	AS BUILT	93/11	DE
0	ISSUED FOR TENDER		

<b>Reid Crowther</b>	
DESIGNED BY	LT
CHECKED BY	DJS
DRAWN BY	EJS
APPROVED BY	
HOR. SCALE:	1:100
VERTICAL:	
RELEASED FOR CONSTRUCTION:	
DATE	91-06-05

ENGINEER'S SEAL  
PROVINCE OF MANITOBA  
REGISTERED PROFESSIONAL ENGINEER  
CONSULTANT DRAWING NO.  
60910 - HE2

**THE CITY OF WINNIPEG**  
WORKS AND OPERATIONS DIVISION  
WATERWORKS WASTE AND DISPOSAL DEPT.

WEST END WATER POLLUTION CONTROL CENTRE  
AREA H - HEADWORKS

HEADWORKS AND SLUDGE STORAGE LOWER ELECTRICAL LIGHTING LAYOUT

CITY DRAWING NUMBER  
SHEET OF  
WEP-161

MEMO-1  
PEL-HLT  
81-06-35

2-0-4-10810212