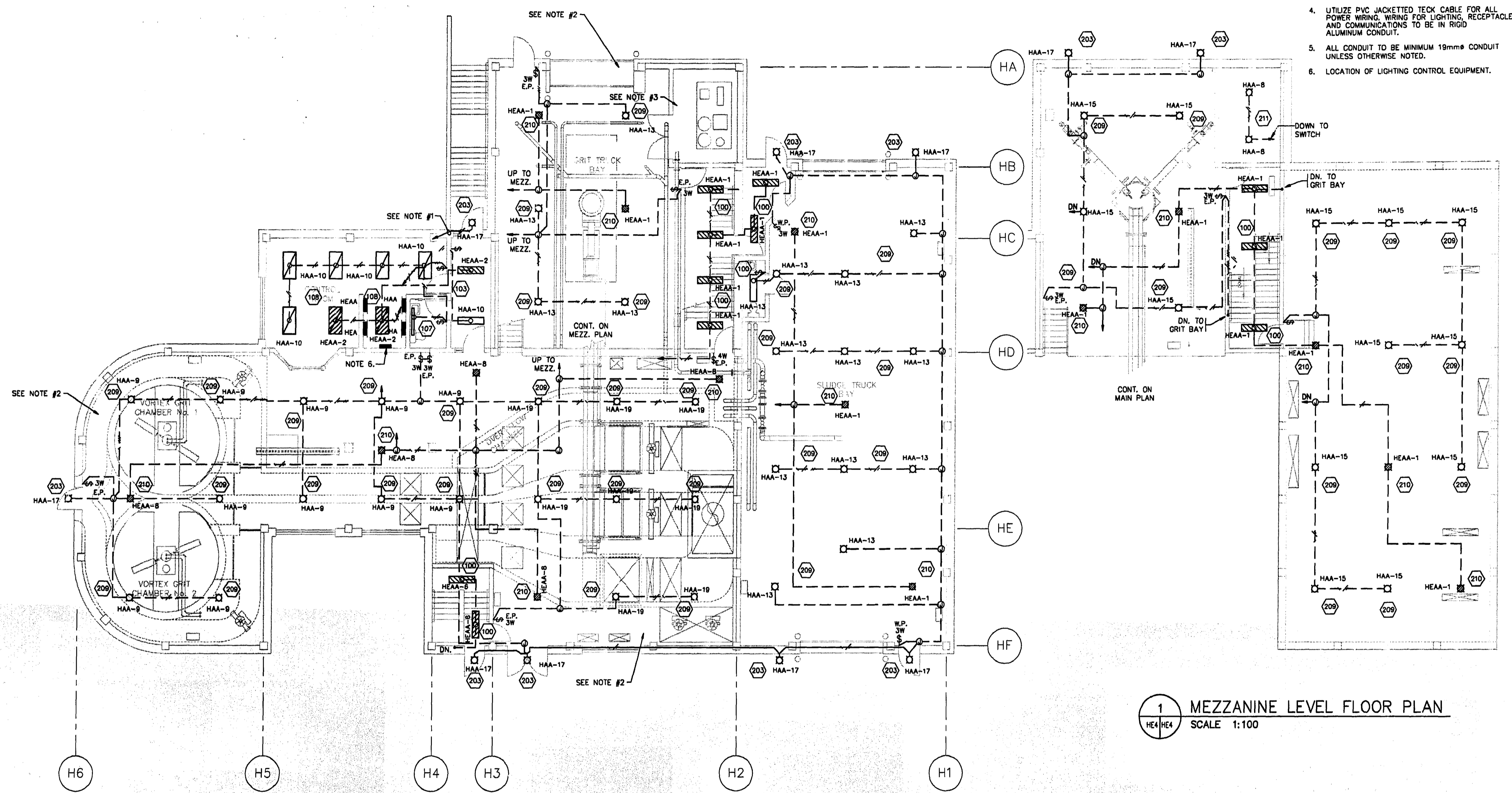


- NOTE:**
1. RUN CONDUIT TO TIMER/PHOTO CONTROL EQUIPMENT.
 2. INSTALLATION IN PROCESS AND GRIT TRUCK BAY TO BE IN ACCORDANCE WITH CLASS 1 DIVISION 2 STANDARDS.
 3. INSTALLATION IN AIR SCRUBBER ROOM TO BE CORROSION RESISTANT, AND TO MEET EXCEED ROBROY TYPE 'PLASTI-BOND OR PVC COMPONENTS.
 4. UTILIZE PVC JACKETED TECK CABLE FOR ALL POWER WIRING. WIRING FOR LIGHTING, RECEPTACLES AND COMMUNICATIONS TO BE IN RIGID ALUMINUM CONDUIT.
 5. ALL CONDUIT TO BE MINIMUM 19mmØ CONDUIT UNLESS OTHERWISE NOTED.
 6. LOCATION OF LIGHTING CONTROL EQUIPMENT.



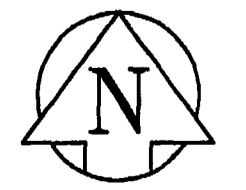
1 MEZZANINE LEVEL FLOOR PLAN
SCALE 1:100

THE ENGINEER THAT SEALED THIS DRAWING IS RESPONSIBLE FOR ONLY THE AS-CONSTRUCTED CHANGES ON THIS DRAWING.
THE ORIGINAL DESIGN WAS THE RESPONSIBILITY OF THE DESIGN ENGINEER WHO SEALED THE ISSUED FOR TENDER DRAWINGS IN 1991.

REID, CROWTHER & PARTNERS LIMITED
WINNIPEG
AS CONSTRUCTED
SIG. *[Signature]* DATE: NOV. 29, 94

detail symbol

A detail number
B drawing where detail shown
C cross reference to drawing where detail taken



B.M. ELEV. 69-006 237.636 m	Reid Crowther	ENGINEER'S SEAL <i>[Seal]</i> REGISTERED PROFESSIONAL ENGINEER	THE CITY OF WINNIPEG WORKS AND OPERATIONS DIVISION WATERWORKS WASTE AND DISPOSAL DEPT.
DESIGNED BY LT	CHECKED BY DJS	CONSULTANT DRAWING NO. 60910 - HE4	CITY DRAWING NUMBER
DRAWN BY EJS	APPROVED BY	WEST END WATER POLLUTION CONTROL CENTRE EXPANSION AREA H - HEADWORKS	SHEET OF
1 AS BUILT 93/11 DE	HOR. SCALE: 1:100	HEADWORKS BUILDING UPPER LEVEL ELECTRICAL LIGHTING LAYOUT	WEP-163
0 ISSUED FOR TENDER 06/91	VERTICAL:		
NO. REVISIONS	DATE BY	DATE 91-06-06	DATE

File # WS 10214