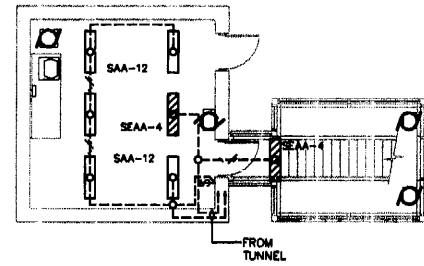
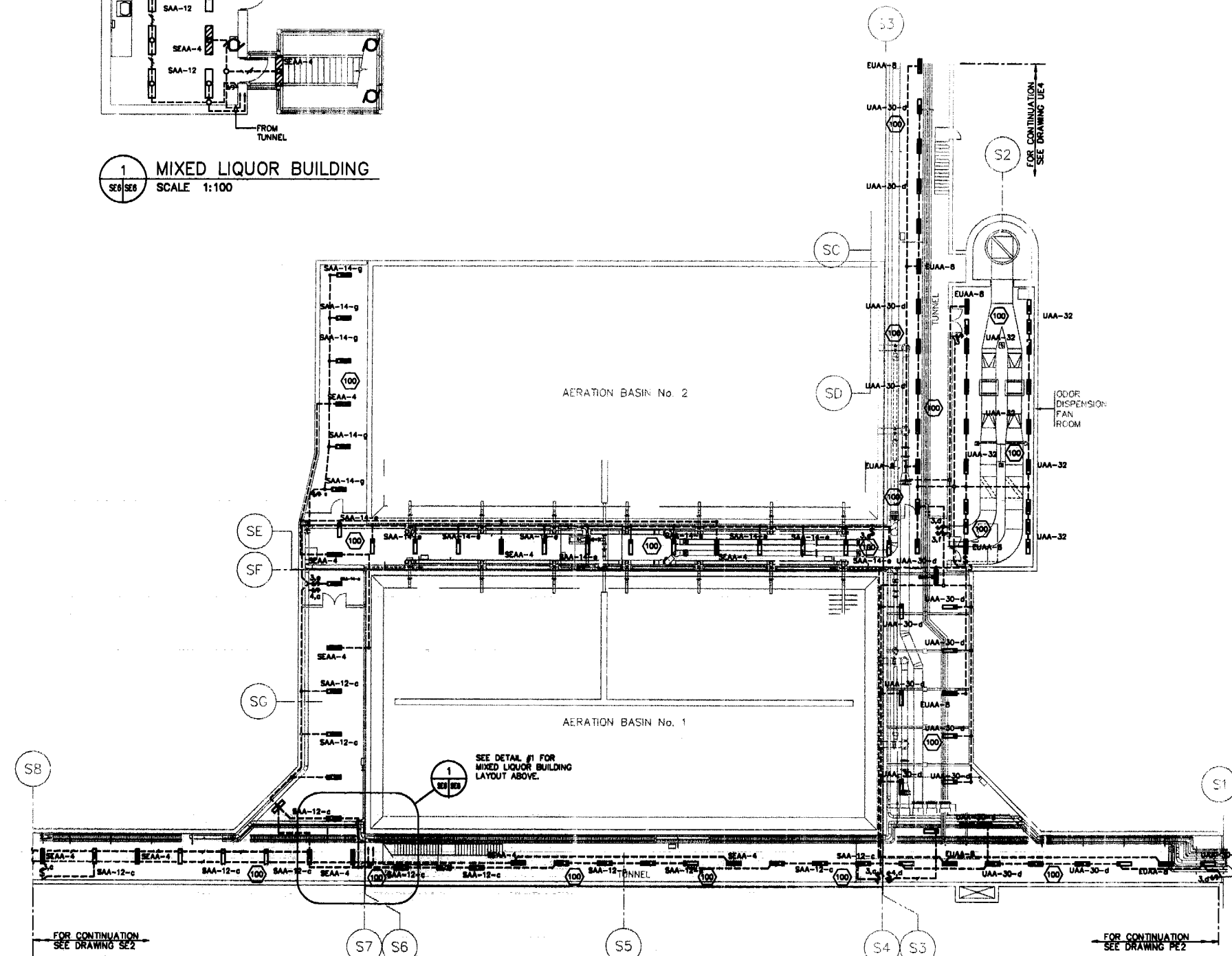


NOTES:

- COORDINATE LUMINAIRE LOCATIONS WITH PIPING AND MECH. DUCTING, WHERE REQUIRED SUSPEND UNITS BELOW SUCH EQUIPMENT.
- UTILIZE PVC JACKETED TECK CABLE FOR ALL POWER WIRING, WIRING FOR LIGHTING, RECEPTACLES AND COMMUNICATIONS TO BE IN RIGID ALUMINUM CONDUIT.
- ALL CONDUIT TO BE MINIMUM 19mmØ CONDUIT UNLESS OTHERWISE NOTED.



1 MIXED LIQUOR BUILDING
SCALE 1:100



THE ENGINEER THAT SEALED THIS DRAWING IS RESPONSIBLE FOR ONLY THE AS-CONSTRUCTED CHANGES ON THIS DRAWING.
THE ORIGINAL DESIGN WAS THE RESPONSIBILITY OF THE DESIGN ENGINEER WHO SEALED THE ISSUED FOR TENDER DRAWINGS IN 1991.

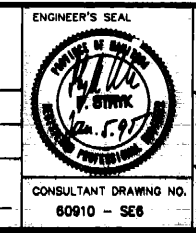
REID, CROWTHER & PARTNERS LIMITED
WINNIPEG
AS CONSTRUCTED
SIG: [Signature] DATE: NOV 21 1991

detail symbol
A detail number
B drawing where detail shown
C cross reference to drawing where detail taken



S.M. ELEV.	69-006	237.636 m
DESIGNED BY	LT	CHECKED BY DJS
DRAWN BY	EJS	APPROVED BY
NO. REVISIONS	DATE	BY
1	AS BUILT 93/11	DE
	DATE 91-06-06	DATE

Reid Crowther
DESIGNED BY LT
DRAWN BY EJS
HOR. SCALE: 1:200
VERTICAL: 1:200
RELEASED FOR CONSTRUCTION: [Signature]



THE CITY OF WINNIPEG
WORKS AND OPERATIONS DIVISION
WATERWORKS WASTE AND DISPOSAL DEPT.
WEST END WATER POLLUTION CONTROL CENTRE EXPANSION
AREA S - AERATION BASIN
AERATION BASIN LOWER LEVEL ELECTRICAL LIGHTING LAYOUT
CITY DRAWING NUMBER SHEET OF
WEP-272

File # WS10327