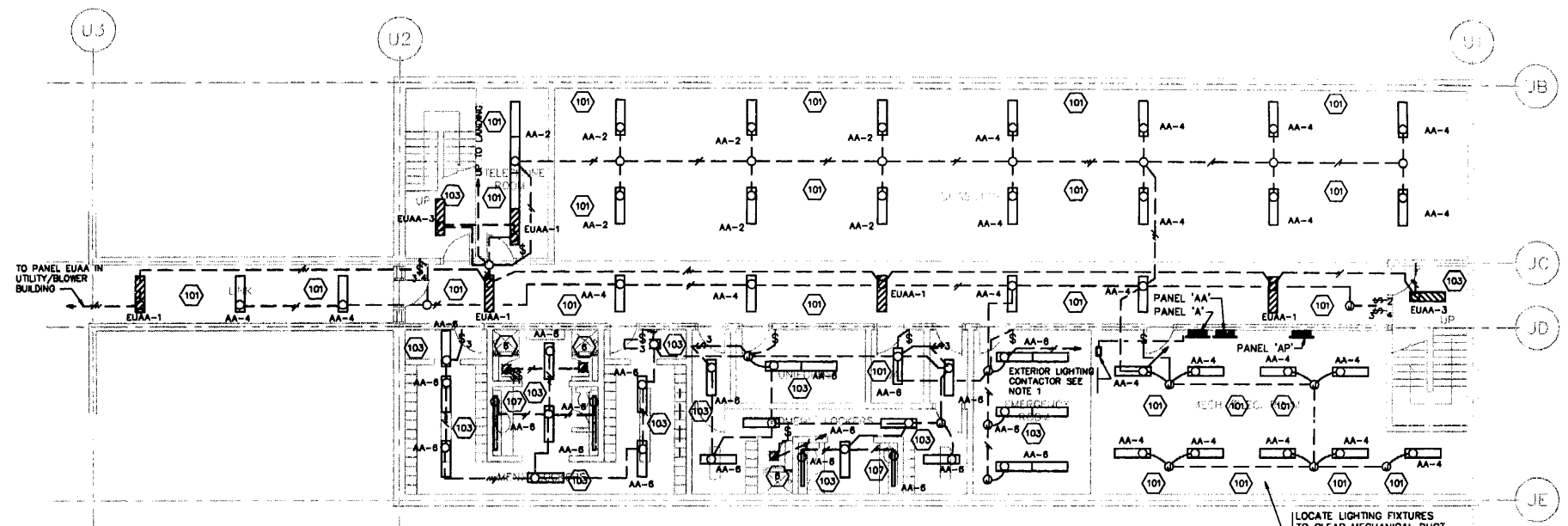
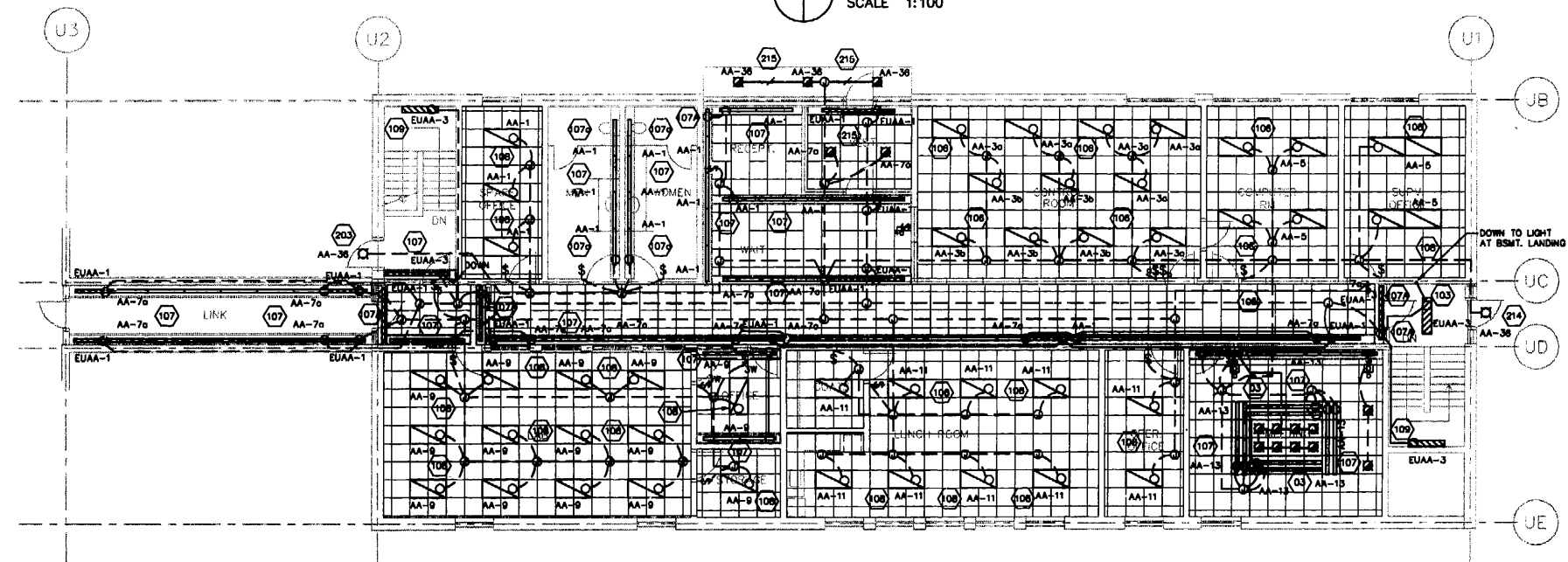


NOTE: 1. SUPPLY INSTALL AND CONNECT 1- 15A, 3P, LIGHTING CONTACTOR IN GENERAL PURPOSE ENCLOSURE C/W H.O.A. SELECTOR SWITCH IN COVER ON WALL ADJACENT TO PANEL 'AA' IN BASEMENT ELEC. ROOM TO CONTROL EXTERIOR LIGHTING CIRCUITS AA-38,38 AND 40 CONNECT PHOTOCELL LOCATED ON STREET LIGHTING POLE ADJACENT TO PARKING LOT TO CONTACTOR TO CONTROL IN AUTO POSITION



1 LOWER FLOOR PLAN
SCALE 1:100



2 UPPER FLOOR PLAN
SCALE 1:100

THE ENGINEER THAT SEALED THIS DRAWING IS RESPONSIBLE FOR ONLY THE AS-CONSTRUCTED CHANGES ON THIS DRAWING.
THE ORIGINAL DESIGN WAS THE RESPONSIBILITY OF THE DESIGN ENGINEER WHO SEALED THE ISSUED FOR TENDER DRAWINGS IN 1991.

REID, CROWTHER & PARTNERS LIMITED
WINNIPEG
AS CONSTRUCTED
SIG: *[Signature]* DATE: *12.1.91*

detail symbol
A detail number
B drawing where detail shown
C cross reference to drawing where detail taken



B.M. 69-006 ELEV. 237.636 m	Reid Crowther	ENGINEER'S SEAL <i>[Seal]</i> CONSULTANT DRAWING NO. 60910 - UE2	THE CITY OF WINNIPEG WORKS AND OPERATIONS DIVISION WATERWORKS WASTE AND DISPOSAL DEPT.
DESIGNED BY LT	CHECKED BY DJS	WEST END WATER POLLUTION CONTROL CENTRE AREA U - ADMINISTRATION BUILDING	CITY DRAWING NUMBER
DRAWN BY EJS	APPROVED BY	UPPER AND LOWER FLOOR PLANS ELECTRICAL LIGHTING LAYOUT	SHEET OF
1 AS BUILT 93/11 DE	HOR. SCALE: 1:100 VERTICAL:	RELEASED FOR CONSTRUCTION:	WEP-294
0 ISSUED FOR TENDER	DATE 91-06-06	DATE	
NO. REVISIONS	DATE BY	DATE	

File # WS 10349