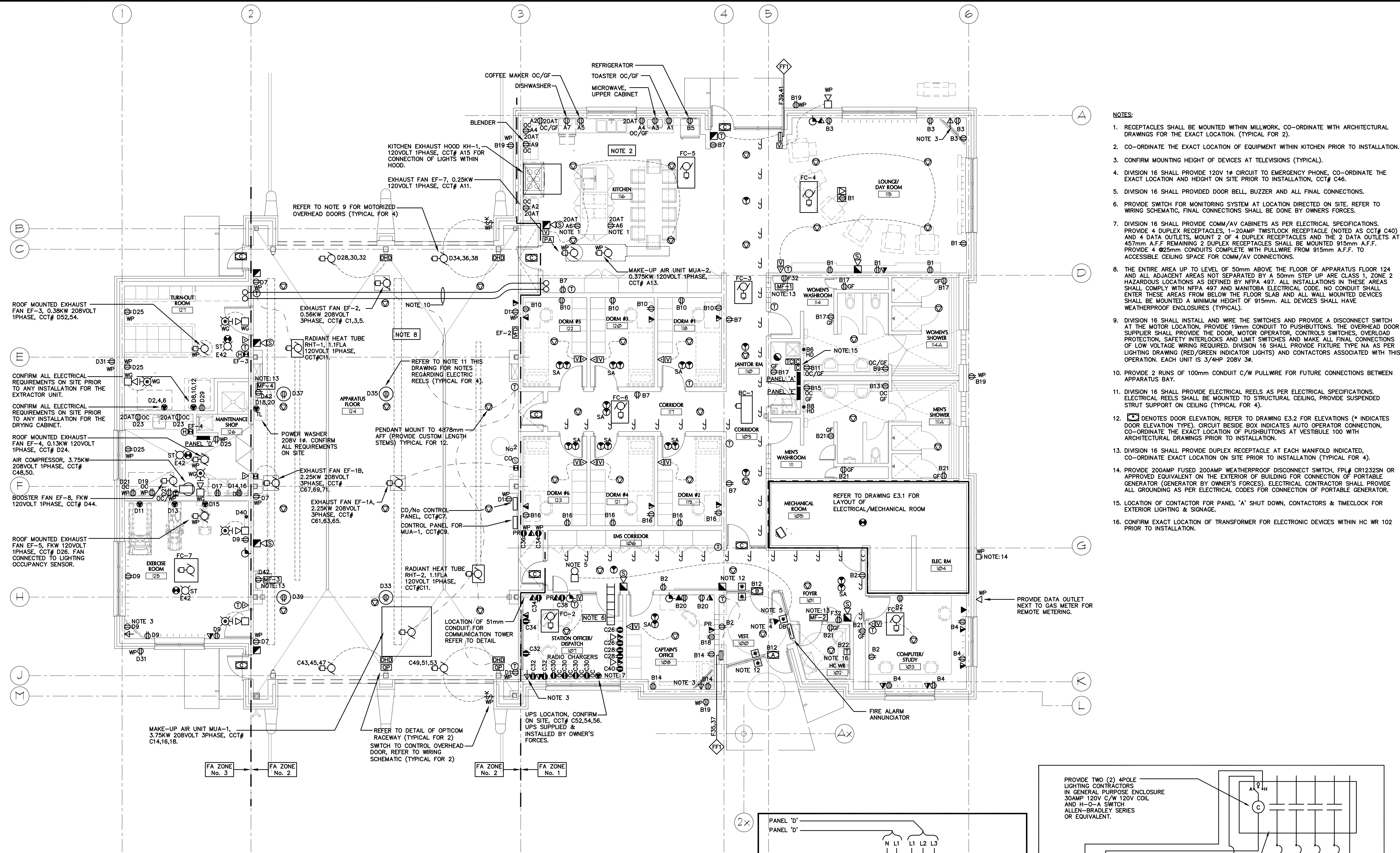


ISSUES:		
NO	DATE	DESCRIPTION
1	MAY 14, 2010	ISSUED FOR CLIENT REVIEW
2	MAY 19, 2010	ISSUED FOR CLIENT REVIEW
3	SEPT. 24, 2010	ISSUED FOR BUILDING PERMIT
4	DEC. 10, 2010	ISSUED FOR TENDER



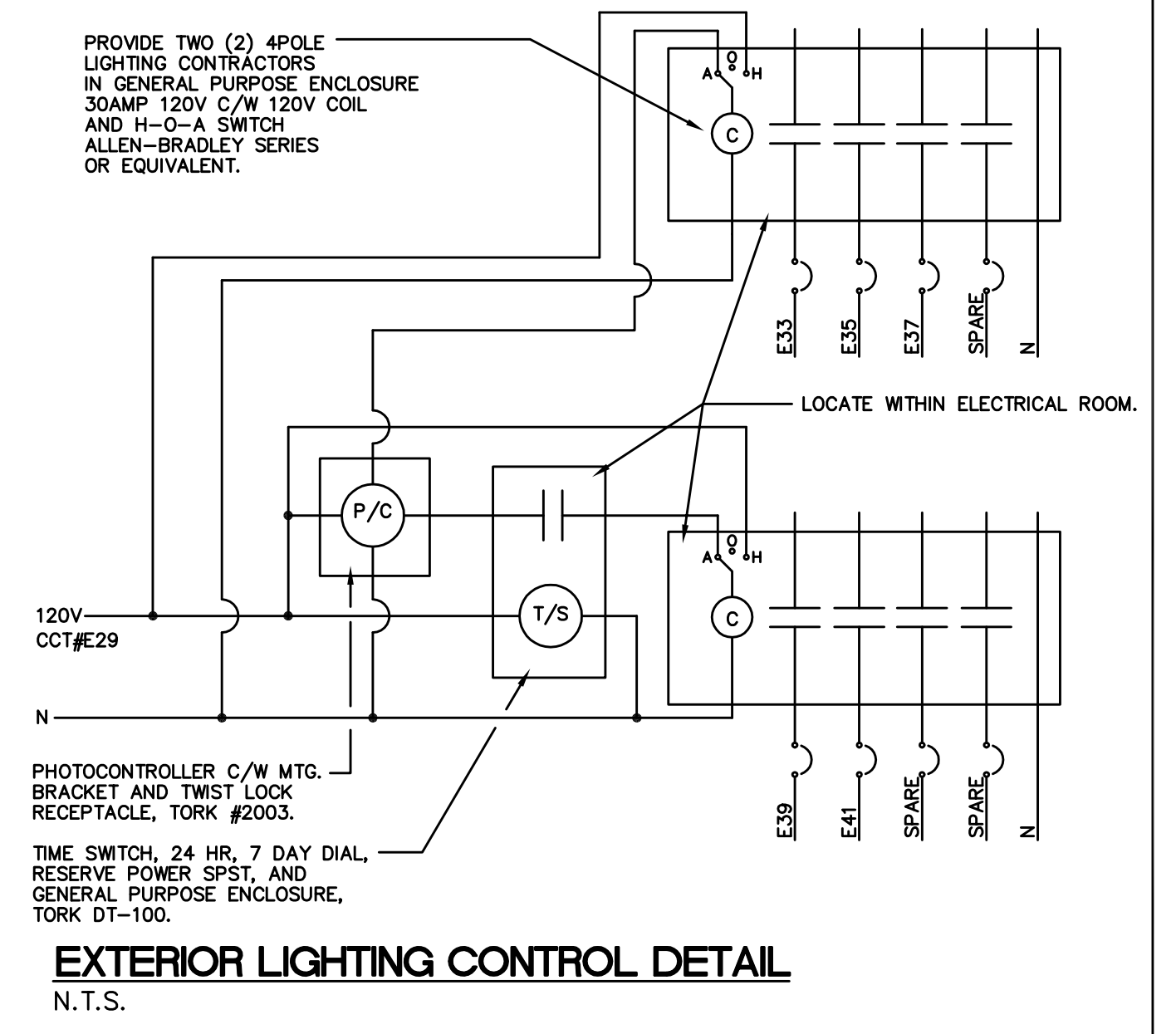
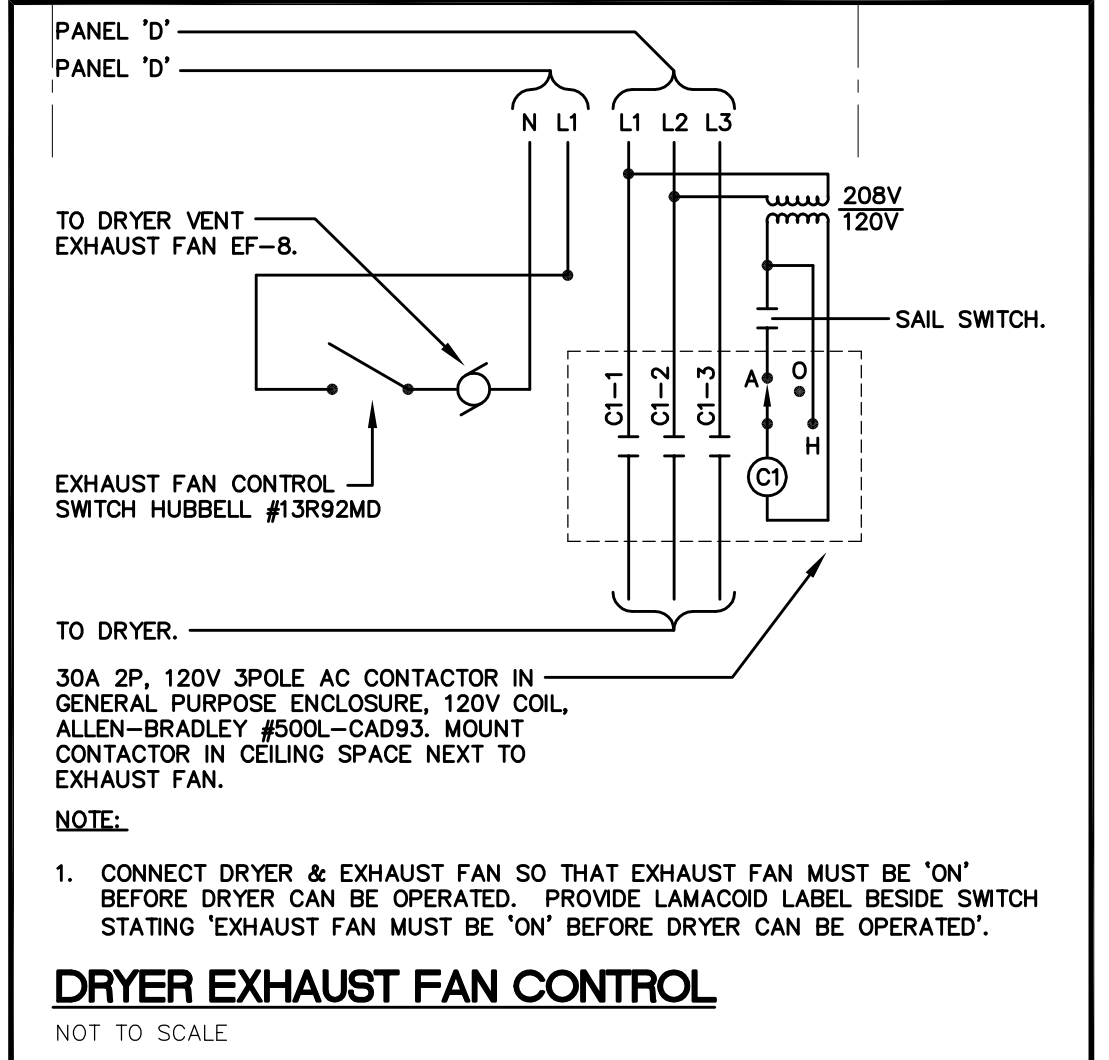
- NOTES:**
- RECEPTACLES SHALL BE MOUNTED WITHIN MILLWORK, CO-ORDINATE WITH ARCHITECTURAL DRAWINGS FOR THE EXACT LOCATION. (TYPICAL FOR 2).
 - CO-ORDINATE THE EXACT LOCATION OF EQUIPMENT WITHIN KITCHEN PRIOR TO INSTALLATION.
 - CONFIRM MOUNTING HEIGHT OF DEVICES AT TELEVISIONS (TYPICAL).
 - DIVISION 16 SHALL PROVIDE 120V 1Φ CIRCUIT TO EMERGENCY PHONE, CO-ORDINATE THE EXACT LOCATION AND HEIGHT ON SITE PRIOR TO INSTALLATION, CCT# C46.
 - DIVISION 16 SHALL PROVIDED DOOR BELL, BUZZER AND ALL FINAL CONNECTIONS.
 - PROVIDE SWITCH FOR MONITORING SYSTEM AT LOCATION DIRECTED ON SITE. REFER TO WIRING SCHEMATIC, FINAL CONNECTIONS SHALL BE DONE BY OWNERS FORCES.
 - DIVISION 16 SHALL PROVIDE COMM/AV CABINETS AS PER ELECTRICAL SPECIFICATIONS. PROVIDE 4 DUPLEX RECEPTACLES, 1-20AMP TWISTLOCK RECEPTACLE (NOTED AS CCT# C40) AND 4 DATA OUTLETS, MOUNT 2 OF 4 DUPLEX RECEPTACLES AND THE 2 DATA OUTLETS AT 457mm A.F.F. REMAINING 2 DUPLEX RECEPTACLES SHALL BE MOUNTED 915mm A.F.F. PROVIDE 4 Ø25mm CONDUITS COMPLETE WITH PULLWIRE FROM 915mm A.F.F. TO ACCESSIBLE CEILING SPACE FOR COMM/AV CONNECTIONS.
 - THE ENTIRE AREA UP TO LEVEL OF 50mm ABOVE THE FLOOR OF APPARATUS FLOOR 124 AND ALL ADJACENT AREAS NOT SEPARATED BY A 50mm STEP UP ARE CLASS 1, ZONE 2 HAZARDOUS LOCATIONS AS DEFINED BY NFPA 497. ALL INSTALLATIONS IN THESE AREAS SHALL COMPLY WITH NFPA 497 AND MANITOBA ELECTRICAL CODE. NO CONDUIT SHALL ENTER THESE AREAS FROM BELOW THE FLOOR SLAB AND ALL WALL MOUNTED DEVICES SHALL BE MOUNTED A MINIMUM HEIGHT OF 915mm. ALL DEVICES SHALL HAVE WEATHERPROOF ENCLOSURES (TYPICAL).
 - DIVISION 16 SHALL INSTALL AND WIRE THE SWITCHES AND PROVIDE A DISCONNECT SWITCH AT THE MOTOR LOCATION, PROVIDE 19mm CONDUIT TO PUSHBUTTONS. THE OVERHEAD DOOR SUPPLIER SHALL PROVIDE THE DOOR, MOTOR OPERATOR, CONTROLS SWITCHES, OVERLOAD PROTECTION, SAFETY INTERLOCKS AND LIMIT SWITCHES AND MAKE ALL FINAL CONNECTIONS OF LOW VOLTAGE WIRING REQUIRED. DIVISION 16 SHALL PROVIDE FIXTURE TYPE NA AS PER LIGHTING DRAWING (RED/GREEN INDICATOR LIGHTS) AND CONTACTORS ASSOCIATED WITH THIS OPERATION. EACH UNIT IS 3/4HP 208V 3Φ.
 - PROVIDE 2 RUNS OF 100mm CONDUIT C/W PULLWIRE FOR FUTURE CONNECTIONS BETWEEN APPARATUS BAY.
 - DIVISION 16 SHALL PROVIDE ELECTRICAL REELS AS PER ELECTRICAL SPECIFICATIONS. ELECTRICAL REELS SHALL BE MOUNTED TO STRUCTURAL CEILING, PROVIDE SUSPENDED STRUT SUPPORT ON CEILING (TYPICAL FOR 4).
 - Ⓜ DENOTES DOOR ELEVATION, REFER TO DRAWING E3.2 FOR ELEVATIONS (* INDICATES DOOR ELEVATION TYPE). CIRCUIT BESIDE BOX INDICATES AUTO OPERATOR CONNECTION, CO-ORDINATE THE EXACT LOCATION OF PUSHBUTTONS AT VESTIBULE 100 WITH ARCHITECTURAL DRAWINGS PRIOR TO INSTALLATION.
 - DIVISION 16 SHALL PROVIDE DUPLEX RECEPTACLE AT EACH MANIFOLD INDICATED, CO-ORDINATE EXACT LOCATION ON SITE PRIOR TO INSTALLATION (TYPICAL FOR 4).
 - PROVIDE 200AMP FUSED 200AMP WEATHERPROOF DISCONNECT SWITCH, FPL# CR1232SN OR APPROVED EQUIVALENT ON THE EXTERIOR OF BUILDING FOR CONNECTION OF PORTABLE GENERATOR (GENERATOR BY OWNER'S FORCES). ELECTRICAL CONTRACTOR SHALL PROVIDE ALL GROUNDING AS PER ELECTRICAL CODES FOR CONNECTION OF PORTABLE GENERATOR.
 - LOCATION OF CONTACTOR FOR PANEL 'A' SHUT DOWN, CONTACTORS & TIMELOCK FOR EXTERIOR LIGHTING & SIGNAGE.
 - CONFIRM EXACT LOCATION OF TRANSFORMER FOR ELECTRONIC DEVICES WITHIN HC WR 102 PRIOR TO INSTALLATION.

NOTE:
ALL ELECTRICAL WIRING, CONDUITS AND COMMUNICATION RACEWAYS RUNNING IN AREAS OF EXPOSED CONCRETE BLOCK, POURED CONCRETE AND ALL EXPOSED CORE SLAB CEILING SHALL BE RUN CONCEALED. NO EXPOSED RUNS OF CONDUIT OR WIRING WILL BE ACCEPTED.

TYPE	KW	VOLTAGE	LOCATION	CCT#
FC-1	0.06	208V 1Φ	COMPUTER STUDY 103	C42,44
FC-2	0.110	208V 1Φ	OFFICER/DISPATCH 107	C42,44
FC-3	0.110	208V 1Φ	CORRIDOR 109	C42,44
FC-4	0.120	208V 1Φ	LOUNGE/DAY ROOM 115	C42,44
FC-5	0.120	208V 1Φ	KITCHEN 116	C42,44
FC-6	0.110	208V 1Φ	CORRIDOR 117	C42,44
FC-7	0.05	208V 1Φ	EXERCISE ROOM 125	F7,9

TYPE	KW	VOLTAGE	LOCATION	CCT#
BC-1	0.314	208V 1Φ	CORRIDOR 109	C42,44

TAG	WATTS	VOLTS	TYPE	DESCRIPTION	CHROMALOX
FF1	4000	208/1/60	FORCE FLOW REC WALL	FORCE FLOW HEATER RECESSED WALL, MOUNT TRIM C/W CONTROLS AND REMOTE TSTAT OR EQUIVALENT	RF1840021 C/W REMOTE TSTAT OR EQUIVALENT
UH1	3000	208/3/60	UNIT HEATER	UNIT HEATER CEILING MOUNTED C/W CONTROLS AND BUILT-IN THERMOSTAT. ALMOND COLOUR.	ELH03B24CT OR EQUIVALENT



VRM
VANDERWESTEN RUTHERFORD MANTECON INC.
CONSULTING STRUCTURAL/MECHANICAL/ELECTRICAL ENGINEERS
LONDON • HAMILTON • WINNIPEG • OTTAWA
7340 COLLEGE VALLEY ROAD, LONDON, ONTARIO, M6L 1H8
PHONE: (519)652-5041 • FAX: (519)652-9058 • www.vrm.com

REVIEW ALL DRAWINGS AND VERIFY ALL DIMENSIONS AT THE SITE. DO NOT SCALE THE DRAWINGS. REPORT ALL DISCREPANCIES TO THE ENGINEER BEFORE PROCEEDING WITH ANY CONSTRUCTION OR SHOP FABRICATION. ALL DRAWINGS, SPECIFICATIONS AND RELATED DOCUMENTS ARE THE COPYRIGHT PROPERTY OF VANDERWESTEN RUTHERFORD MANTECON AND MUST BE RETURNED UPON REQUEST. REPRODUCTION OF DRAWINGS, SPECIFICATIONS AND RELATED DOCUMENTS IN PART OR WHOLE IS FORBIDDEN WITHOUT THE CONSULTANT'S WRITTEN PERMISSION.

PROJECT NAME:
NEW WINNIPEG STATION No. 27 PROJECT
SAGE CREEK, WINNIPEG, MANITOBA

DRAWING TITLE:
FLOOR PLAN POWER & SYSTEMS

PROJECT NORTH:

SCALE: 1:75

DATE: DECEMBER 10, 2010

ISSUED: DECEMBER 10, 2010

DRAWN BY: PDL

CHECKED BY: ELC

PROJECT NO.: 2261

FILE NAME:

DRAWING NO.: E2.2

NOT VALID FOR CONSTRUCTION UNLESS SIGNED