

ISSUES:		
NO.	DATE	DESCRIPTION
1	SEP. 24, 2010	ISSUED FOR TENDER
2	DEC. 16, 2010	ISSUED FOR CONSTRUCTION

© COPYRIGHT MURPHY & MURPHY ARCHITECT 2009
NOT TO BE REPRODUCED WITHOUT CONSENT OF ARCHITECT.

VB&S VanBoxmeer & Stranges Ltd.
STRUCTURAL ENGINEERS
458 Queens Ave, London, ON, Canada N6B 1X9
tel. (519) 433-4661 fax. (519) 433-6420
E-mail vbands@vbands.com

MURPHY & MURPHY ARCHITECT INC.
775 WATERLOO STREET, LONDON, ONTARIO N6A 3W5
PH: (519) 433-5161 FAX: (519) 433-5163

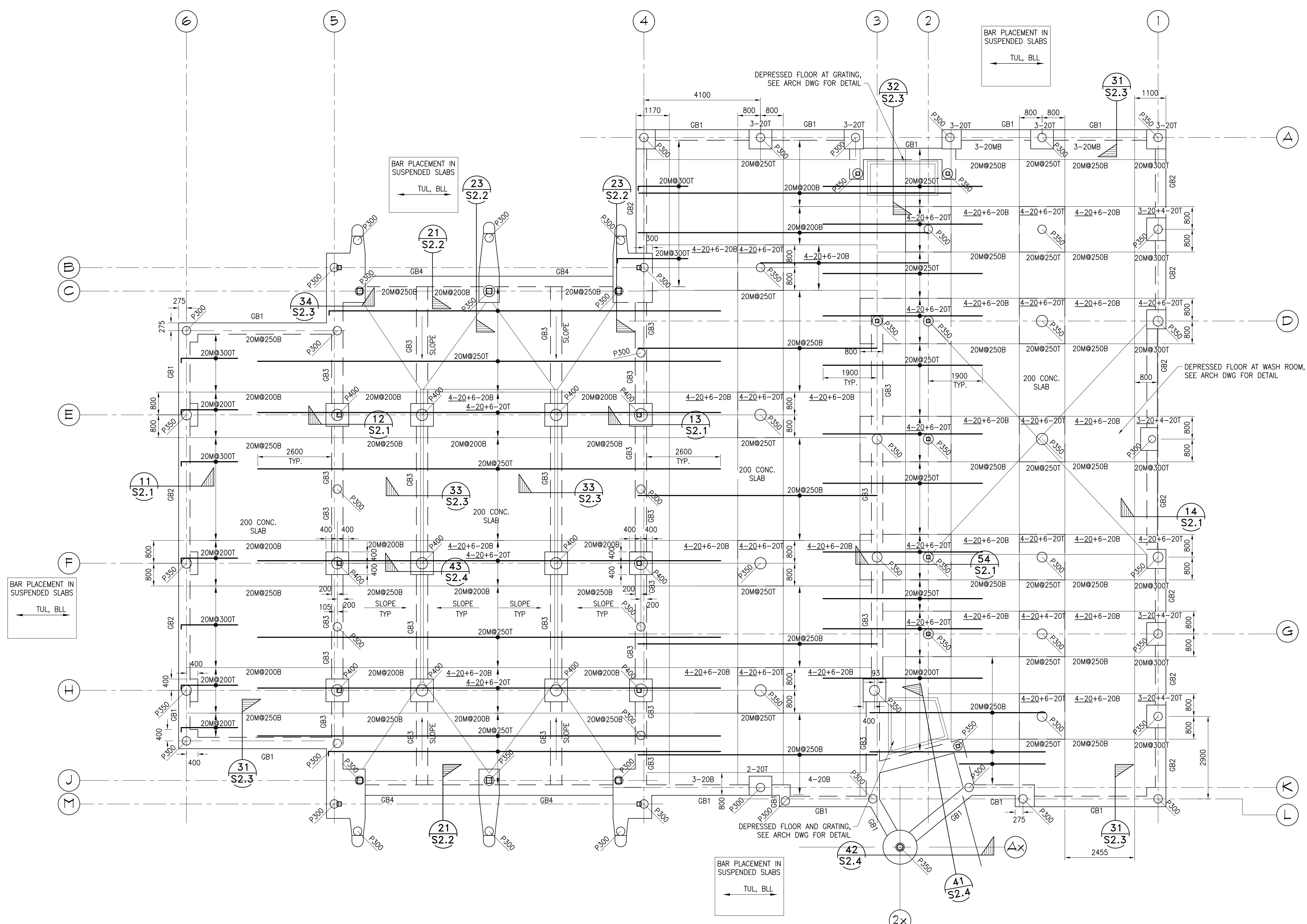
- (A) A. Detail Number
- (B) B. Drawing Number - Where Detail Found

CONTRACTOR SHALL CHECK ALL DIMENSIONS ON THE DRAWINGS AND REPORT ANY DISCREPANCIES TO THE ARCHITECT BEFORE PROCEEDING. ALL DRAWINGS AND SPECIFICATIONS ARE PROPERTY OF THE ARCHITECT AND MUST BE RETURNED AT THE COMPLETION OF THE WORK. DRAWINGS ARE NOT TO BE SCALED. USE ONLY THE LATEST REVISED DRAWINGS OR THOSE THAT ARE MARKED "MAILED FOR CONSTRUCTION". ANY UNAUTHORIZED USE IS PROHIBITED. AREA CALCULATIONS ARE APPROXIMATE.

PROJECT NAME:
NEW WINNIPEG STATION No. 27 PROJECT
WINNIPEG, MANITOBA

DRAWING TITLE:
FOUNDATION PLAN AND FLOOR SLAB LEFT - RIGHT DIRECTION REINFORCING

PROJECT NORTH:	STAMP:
SCALE:	PROJECT NO: 10123
DATE:	FILE NAME:
ISSUED: MAY 20 2010	DRAWING NO: S1.1
DRAWN BY: DZ	
CHECKED BY: RAS	



PRECAST CONCRETE PILE SCHEDULE

MARK	SIZE	ALLOWABLE LOAD (kN)	COMMENTS
P300	300 DIAMETER PRECAST CONCRETE PILE	443	
P350	350 DIAMETER PRECAST CONCRETE PILE	620	
P400	400 DIAMETER PRECAST CONCRETE PILE	797	

FOUNDATION PLAN AND FLOOR SLAB LEFT - RIGHT DIRECTION REINFORCING
SCALE: 1:75

- FOUNDATION PLAN NOTES**
- TOP OF NEW SLAB ON GRADE ELEVATION TO BE AT -0.050 IN APPARATUS BAY.
 - TOP OF NEW SLAB ON GRADE ELEVATION TO BE AT 0.000 IN LIVING AREA. DETAILS AND ELEVATIONS ASSUME TOP OF SLAB GRADE=0.00, REFER TO ARCHITECTURAL DRAWINGS FOR FLOOR DEPRESSIONS.
 - SEE PILE SCHEDULE FOR FILE SIZE AND CAPACITY. PILE TO BE DESIGNED BY CONTRACTOR. SEE TBT ENGINEERING LIMITED REPORT NO: 10-36 DATED AUGUST, 2010 FOR DESIGN AND CONSTRUCTION DETAILS.
 - PRE-CAST PILE CONTRACTOR SHALL PROVIDE PILE SHOP DRAWINGS TO VB&S FOR REVIEW. DO NOT COMMENCE FABRICATION BEFORE SHOP DRAWINGS ARE APPROVED.
 - UNLESS NOTED ON PLAN, PILE TO LOCATED ON GRID LINE OR CENTER OF GRID BEAM.
 - SEE ARCH DRAWING FOR DEPRESSION AND SLOPE TO DRAIN.
 - SEE SECTION AND COORDINATE WITH ARCHITECTURAL AND MECHANICAL DRAWINGS FOR PILE TOP ELEVATIONS
 - SEE TYPICAL DETAILS ON S3.2 FOR MORE REBAR LENGTH, PLACEMENT AND OTHER DETAILS.
 - CONCRETE SLAB TO BE 200MM DEEP. DROP PANEL TO BE 500MM DEEP (200MM SLAB INCLUDED, SEE SECTION 55 ON S2.5)
 - SEE SECTIONS FOR CONCRETE PILE CAPS' DEPTH.